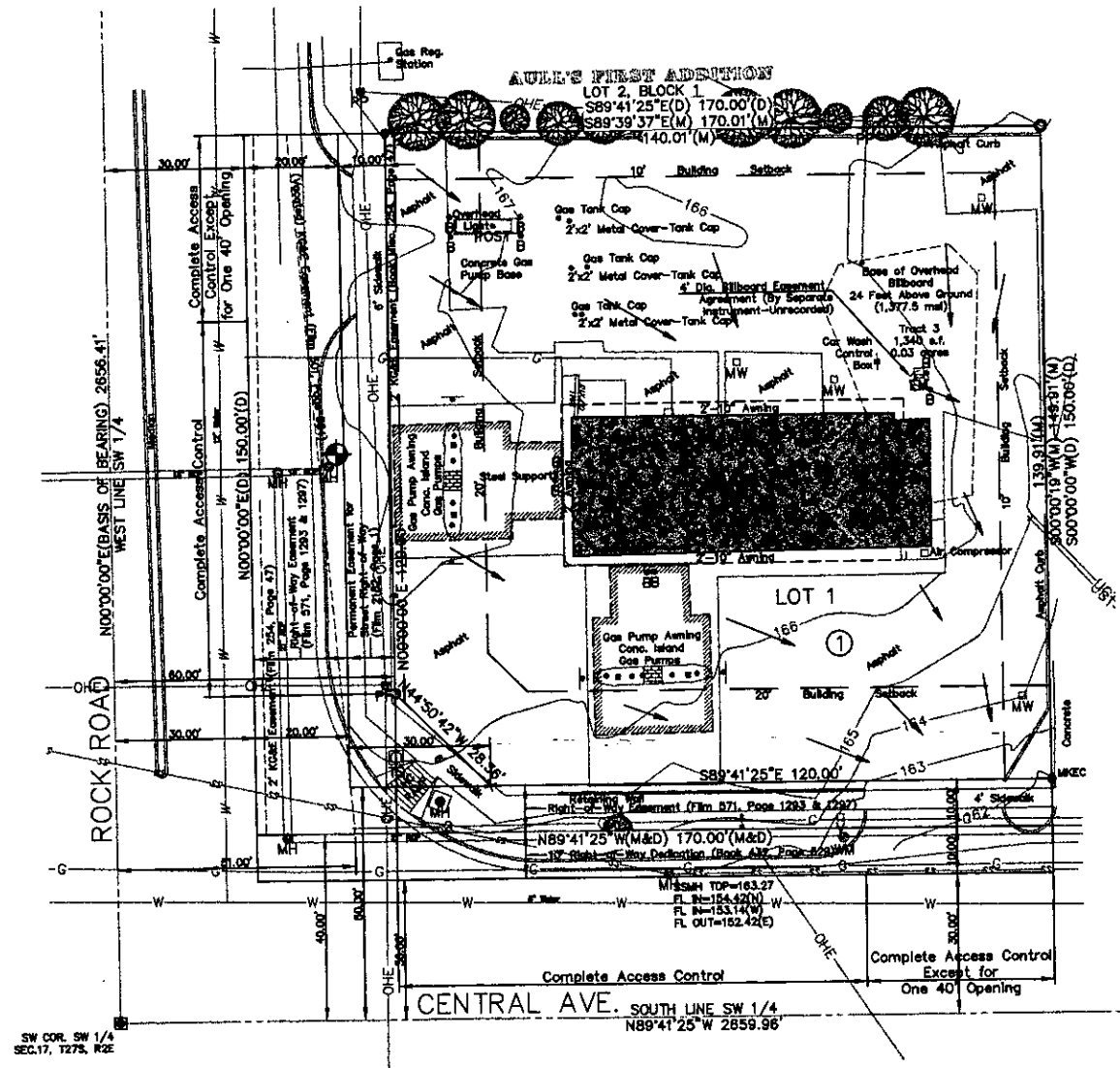


CENTRAL AND ROCK ADDITION WICHITA, SEDGWICK COUNTY, KANSAS



	Area (Ac)	1/5	1/100	Undeveloped		Developed	
				Q ₅ (cfs)	Q ₁₀₀ (cfs)	Q ₅ (cfs)	Q ₁₀₀ (cfs)
TOTAL	.45	4.56	7.37	1.42	2.65	1.42	2.65

Notes:

1. The parcel has existing development on it therefore runoff will not be increased.