



1" = 200'  
#01-017-SD

- ▲ = IRON FOUND (UNKNOWN ORIGIN)
- = IRON SET W/"MOEHRING" CAP

**LEGEND**

- UP = UTILITY POLE
- OE = OVERHEAD ELECTRIC
- UT = UNDERGROUND TELEPHONE
- TSB = TELEPHONE SPLICE BOX

DATE OF PREPARATION: MAY 25, 2001.

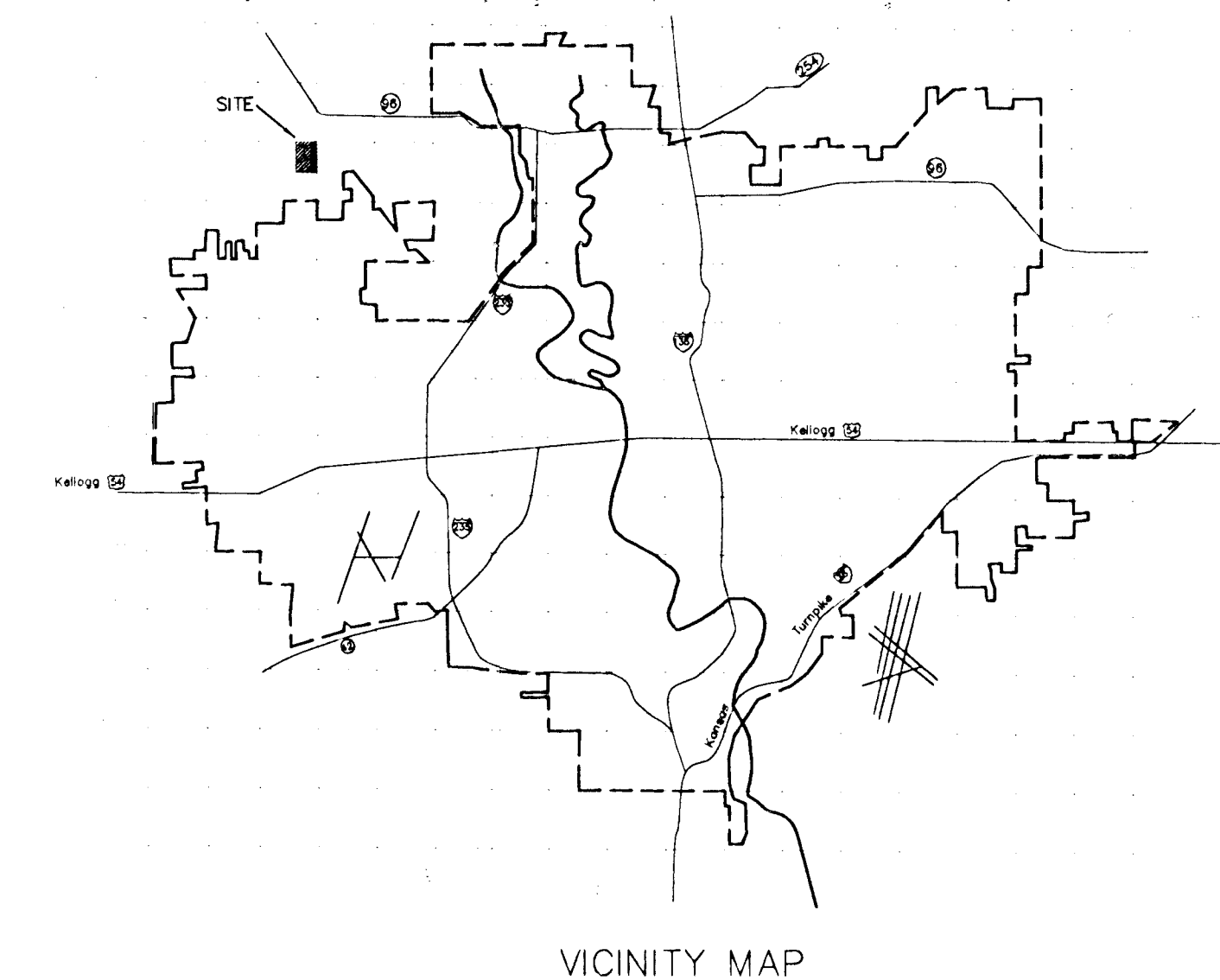
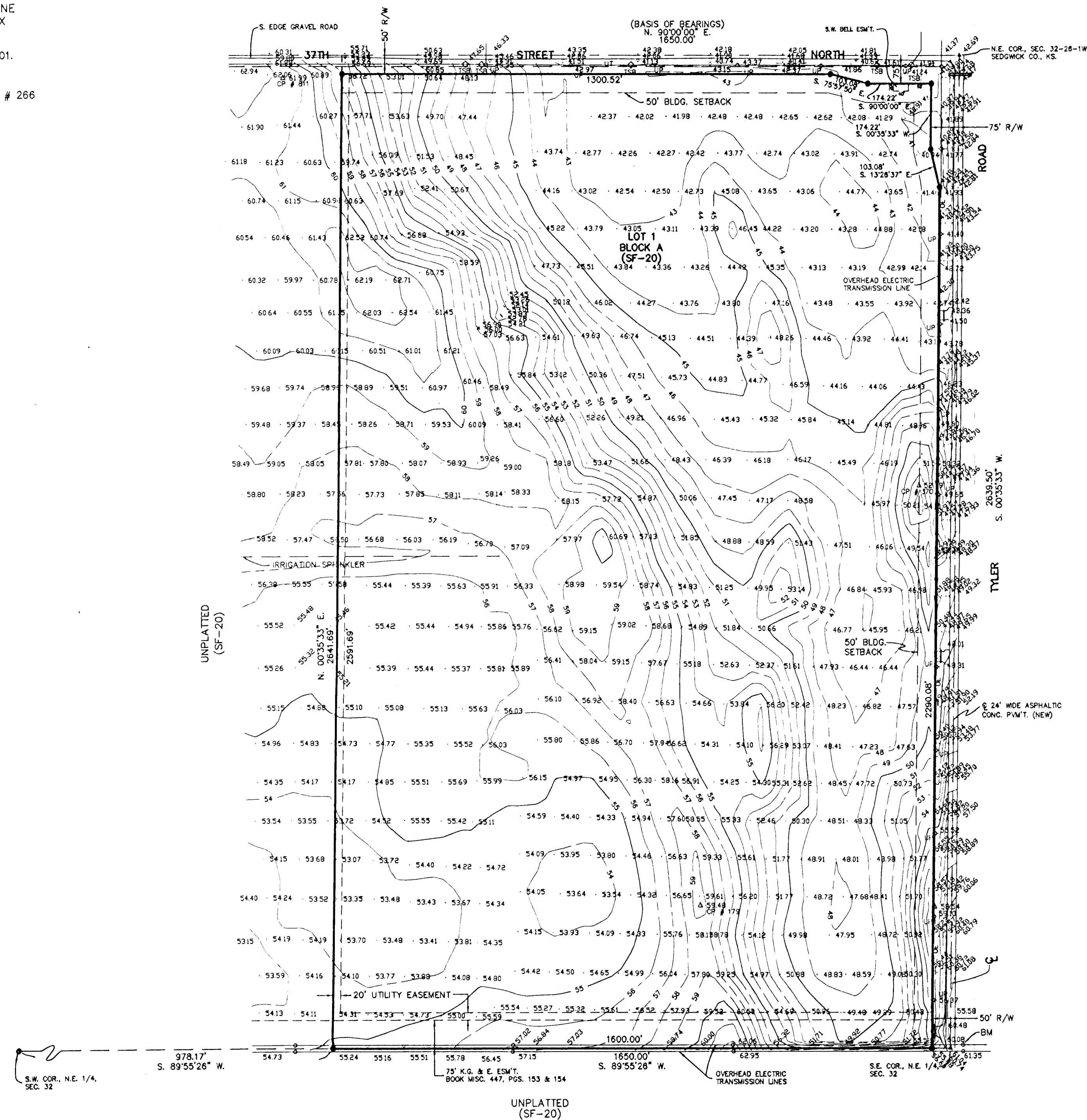
OWNER: MAIZE UNIFIED SCHOOL DISTRICT # 266

**PRELIMINARY PLAT**

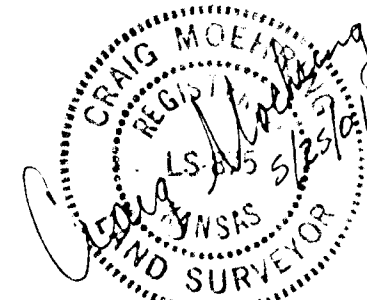
**CENTRAL MAIZE SCHOOLS ADDITION**  
Sedgwick County, Kansas

**LEGAL DESCRIPTION**

THE EAST 1650.00' OF THE N.E. 1/4 OF SECTION 32, TOWNSHIP 26 SOUTH,  
RANGE 1 WEST OF THE 6TH P.M., SEDGWICK COUNTY, KANSAS.



**BENCHMARK**  
 60d Spike in North Pole of "H" Frame  
 Transmission Line, East of S.E. Cor., N.E. 1/4,  
 Sec. 32. Elev. = 1363.49 N.G.V.D. = 176.09 CITY DATUM  
 Top of Iron, N.W. Cor., N.E. 1/4, N.W. 1/4,  
 Sec. 32. Elev. = 1353.38 N.G.V.D. = 165.98 CITY DATUM  
 Add 1300.00 to spot elev's. to convert to N.G.V.D.  
 Contour interval = 1.0'



MOEHRING & ASSOCIATES - CONSULTING ENGINEERS - SURVEYORS  
433 S. HYDRAULIC WICHITA, KANSAS (316) 263-8291

C:\SC2000\WORK\MAIZE\RED.DWG