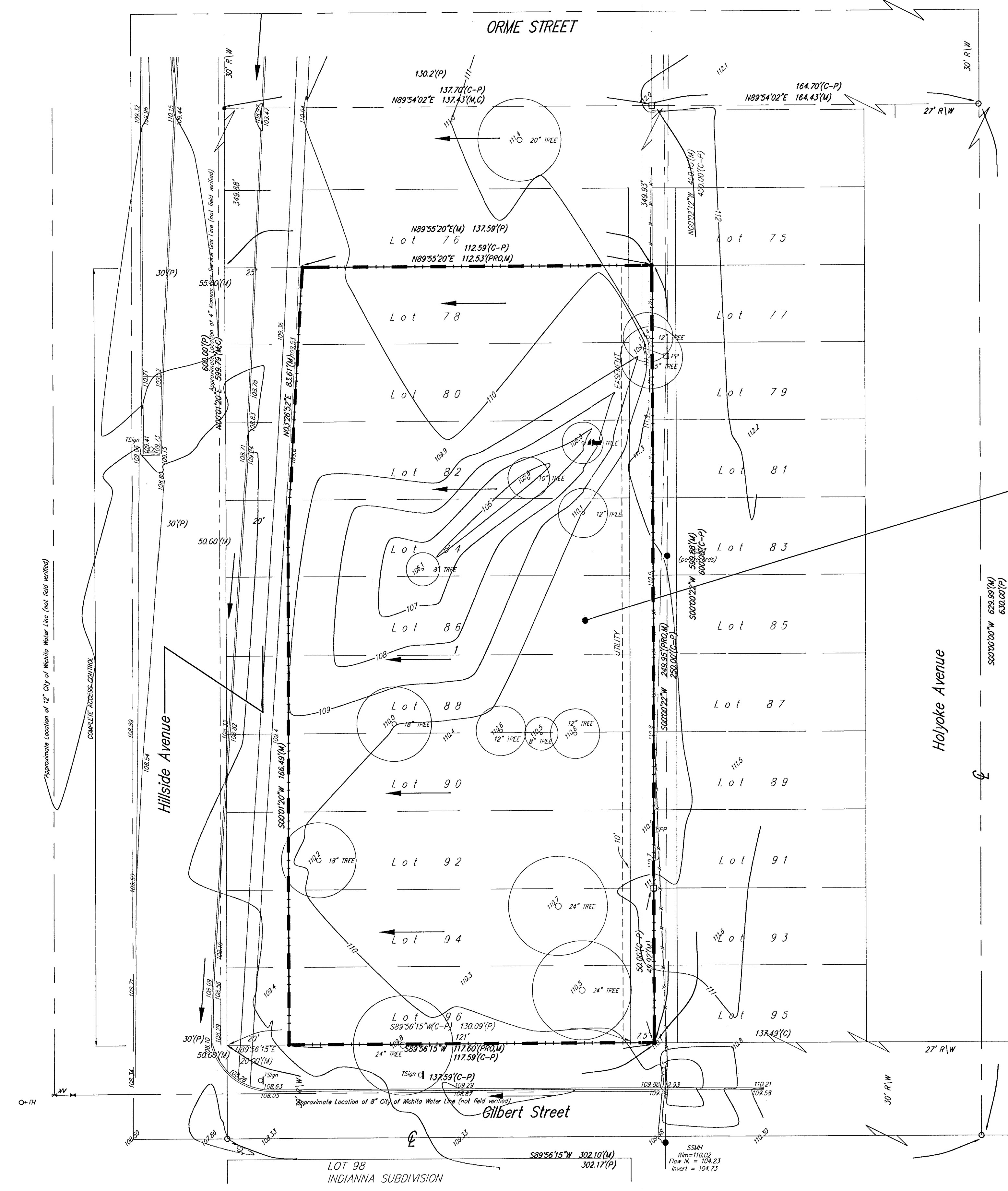


DRAINAGE PLAN

CHANG & ARENSBERG ADDITION

WICHITA, SEDGWICK COUNTY, KANSAS



Developed Conditions
 D.A. = 0.70 acres
 "C" = 0.85
 Q_s = 2.7 cfs
 Q₁₀₀ = 4.4 cfs

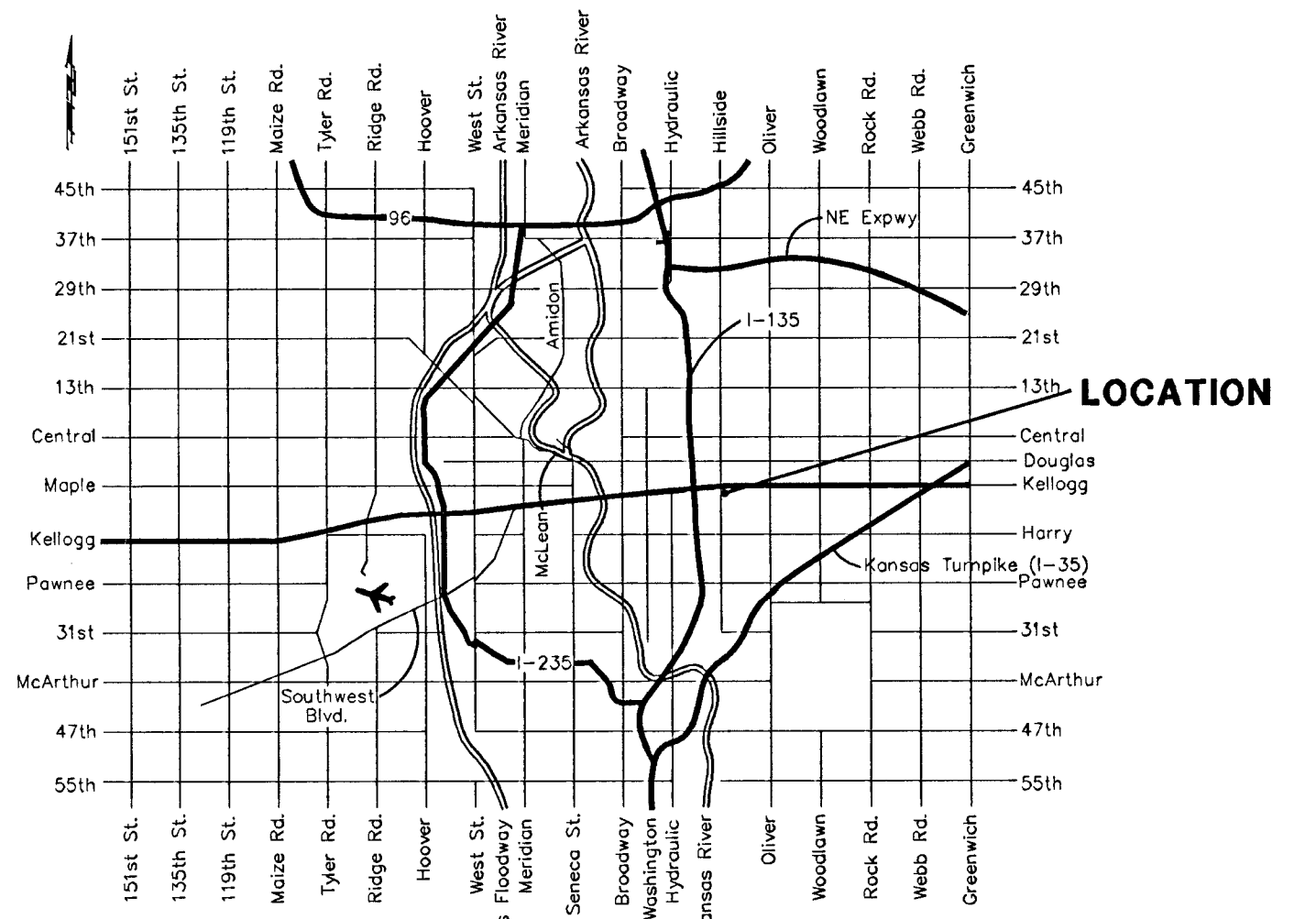
- 0 20 40
- (PRO) = PROPORTIONED
 - (M) = MEASURED
 - (D) = DESCRIBED
 - (P) = PLATTED
 - (C-P) = CALCULATED PER PLATTED INFO.
 - = #4 Baughman Rebar Set
 - = 1/2" Iron Pipe in Thimble Found
 - = 1/2" Iron Pipe Found
 - ⊕ = Fire Hydrant
 - ⊞ = Power Pole
 - ⊠ = Sign
 - SMH ● = Sanitary Sewer Manhole
 - SSM ● = Stormwater Sewer Manhole
 - T ⊙ = Tree
 - WV ⊕ = Water Valve

BENCHMARK: C.O.W. DISC 44.6 S. AND 60' W CENTERLINE OF LINCOLN AND HILLSIDE.

OWNER: CITY OF WICHITA
 455 N. MAIN
 WICHITA, KANSAS 67202

CONTRACT PURCHASER:
 JOSEPH CHANG
 2016 S. WASHINGTON
 WICHITA, KS 67211
 (316) 267-3924

NOTE:
 The Lots Will Be Developed As A One Parcel
 Unit With Discharge To The Street Via Driveways
 And/Or Neenah Storm Water Curb Openings
 As Necessary.



LOCATION