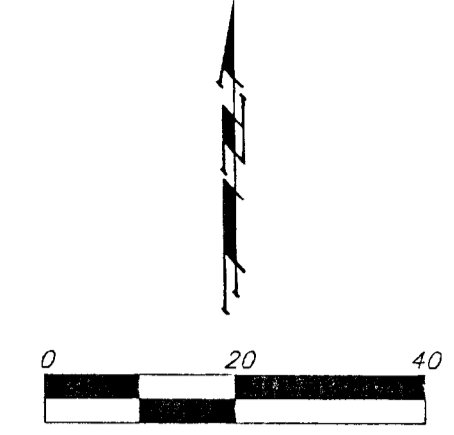
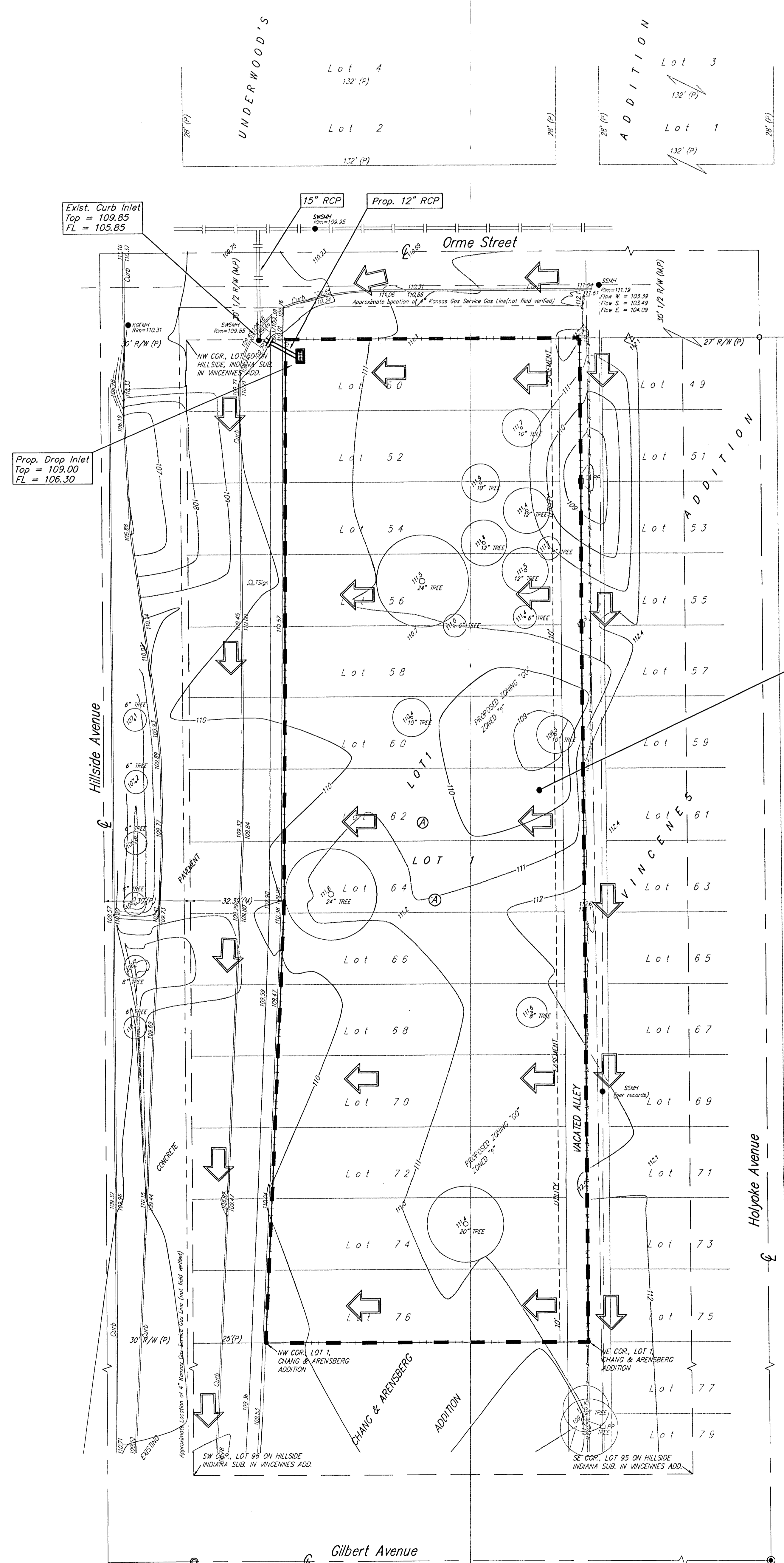


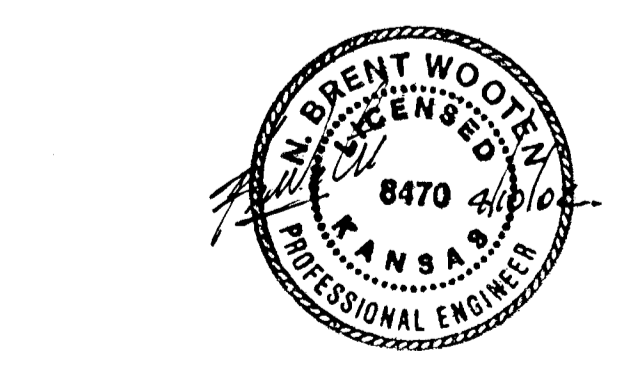
DRAINAGE PLAN CHANG & ARENSBERG 2ND ADDITION WICHITA, SEDGWICK COUNTY, KANSAS



- (P) = PLATTED
 - (M) = MEASURED
 - (C) = CALCULATED
 - (D) = DESIGNED
 - (PRO) = PROPOSED
 - (C-P) = CALCULATED PER PLATTED INFO.
 - (C-M) = CALCULATED PER RESURVEY INFO.
 - (C-D) = CALCULATED PER DESIGNED INFO.
- = #4 BAUGHMAN REBAR (SET)
 - = 1" IRON IN THIMBLE (FOUND)
 - = 1/2" IRON PIPE (FOUND)
 - ⊙ = 1/2" IRON IN THIMBLE (FOUND)
 - ⊗ = 1-1/2" IRON IN THIMBLE (FOUND)
- HYD = Fire Hydrant
 - PF □ = Power Pole
 - SPN Δ = Sign
 - SMW ● = Sanitary Sewer Manhole
 - SMWH ● = Stormwater Sewer Manhole
 - T ○ = Tree
 - WV - = Water Valve
- BENCHMARK:
C&W DMS 44.8 S. AND 85' W CENTERLINE
OF LINCOLN AND HILLSIDE.



D.A. = 0.85 ac.
 $T_{p, 100} = .65791$
 $T_c = 15$ min.
 $Q_p = 3.3$ cfs
 $Q_{100} = 3.7$ cfs



DRAINAGE NOTE:
 The lot will be served with storm sewer located in the northwest corner of the lot. If the siteplan grading can not drain to inlets, all runoff shall discharge to the street via driveways and/or Neenah storm water curb openings.