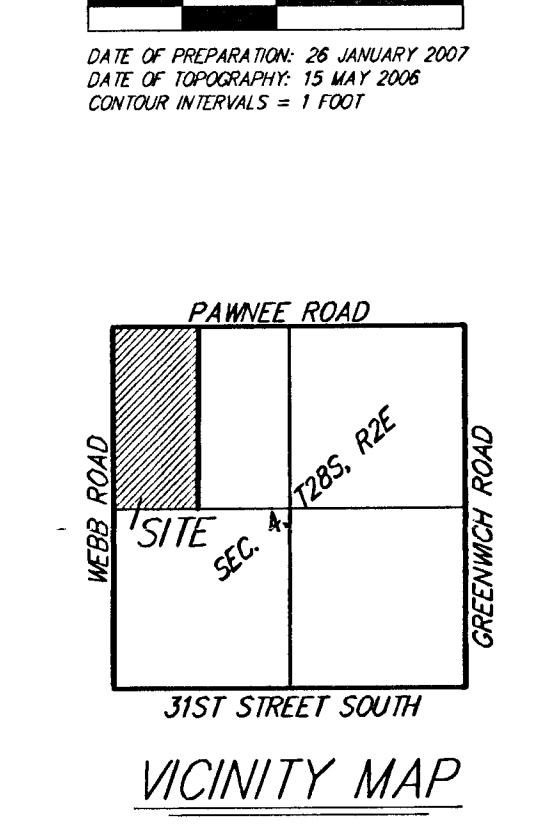
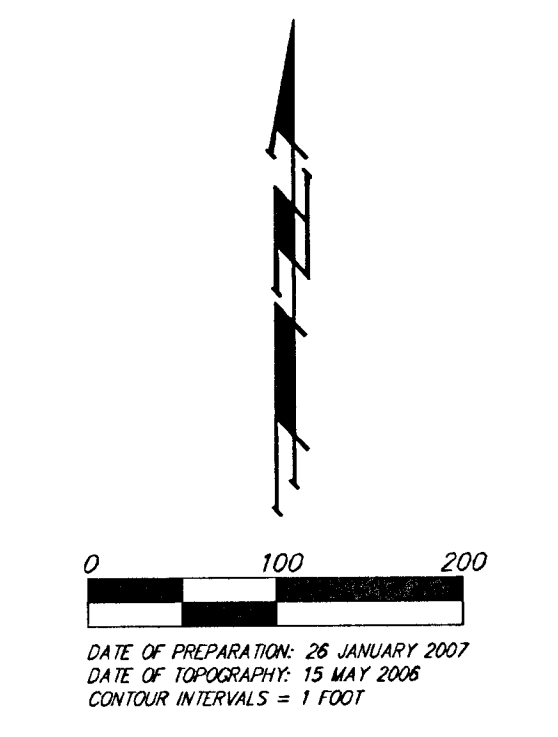
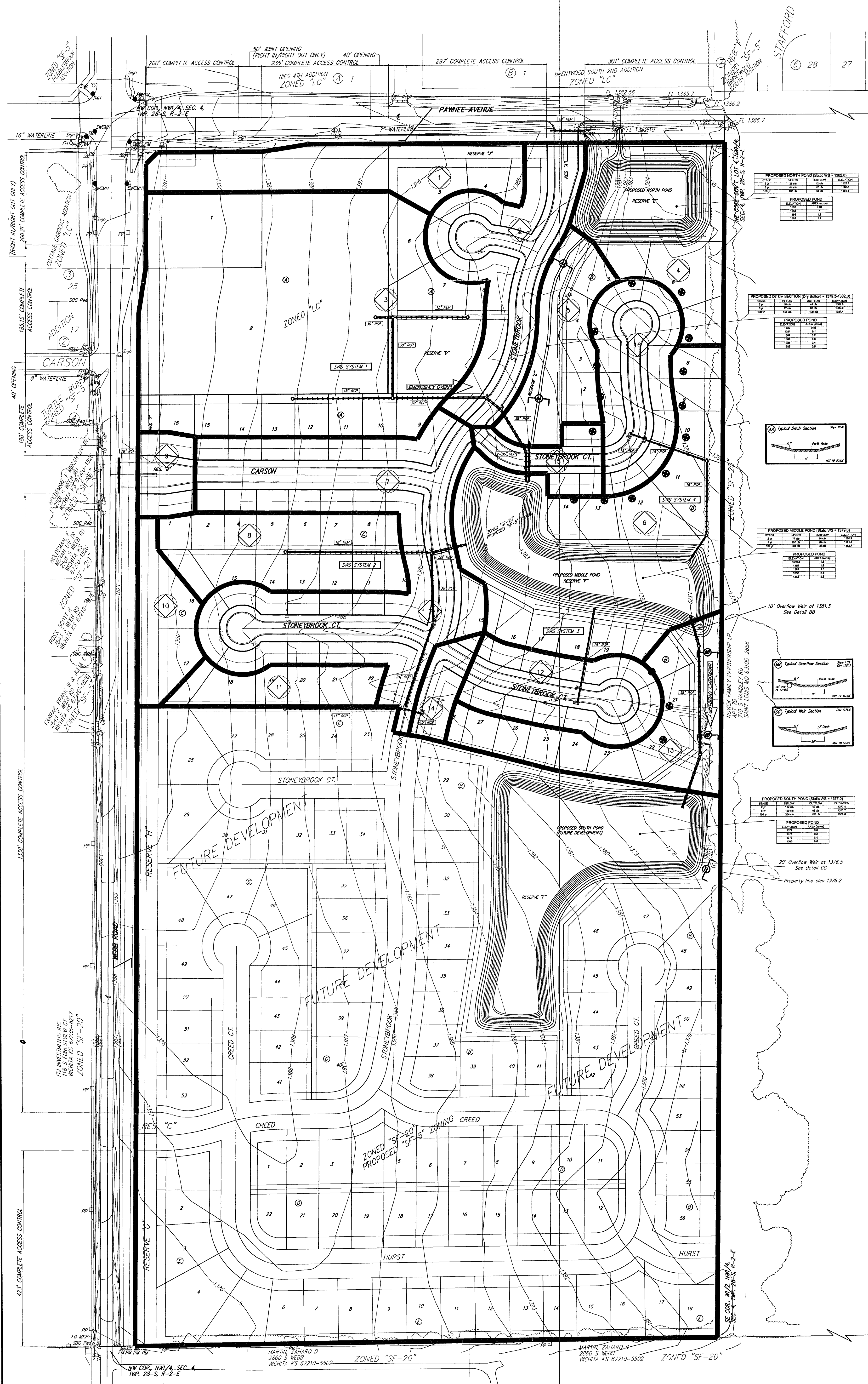


OVERALL EXHIBIT  
**CHANTILLY PLACE ADDITION**  
 WICHITA, SEDGWICK COUNTY, KANSAS



- ⊕ = Power Pole
- ⊕ = Transformer
- ⊕ = SBC Pedestal
- ⊕ = Fabricate Marker
- ⊕ = Stormwater Sewer Manhole
- ⊕ = Traffic Manhole
- ⊕ = Meter Valve
- ⊕ = Fire Hydrant
- ⊕ = Sign
- ⊕ = Pipeline Marker

- WATER LINE
- SOUTHWESTERN BELL
- GAS LINE
- ELECTRIC LINE

RESERVE USES:

RESERVES "A", "B", "C" AND "D" ARE HEREBY RESERVED FOR OPEN SPACE, LANDSCAPING, DRAINAGE PURPOSES, UTILITIES, ENTRY MONUMENTS, AND STREETS.

RESERVE "E" IS HEREBY RESERVED FOR SWIMMING POOLS AND RELATED FACILITIES, OPEN SPACE, LANDSCAPING, PARKING, DECKS, SIDEWALKS, DRAINAGE PURPOSES, RECREATIONAL AREAS, AND UTILITIES AS CONFINED TO EASEMENTS.

RESERVE "F" IS HEREBY RESERVED FOR OPEN SPACE, LANDSCAPING, BERMS, LAKES, DRAINAGE PURPOSES, SIDEWALKS, GAZEBOS, UTILITIES AS CONFINED TO EASEMENTS, AND GAS LINES AS CONFINED TO EASEMENTS.

RESERVE "G" IS HEREBY RESERVED FOR OPEN SPACE, LANDSCAPING, BERMS, LAKES, DRAINAGE PURPOSES, SIDEWALKS, GAZEBOS, AND UTILITIES AS CONFINED TO EASEMENTS.

RESERVES "H", "I", "J", "K" AND "L" ARE HEREBY RESERVED FOR OPEN SPACE, LANDSCAPING, BERMS, ENTRY MONUMENTS, DRAINAGE PURPOSES, AND GAS LINES AS CONFINED TO EASEMENTS.

OWNER/DEVELOPER:  
 SODORA LAND COMPANY  
 227 N. WARD ST. #100  
 WICHITA, KS 67203  
 PH: 316-263-1001

LEGAL DESCRIPTION:  
 GOVERNMENT LOT 4 IN THE NW 1/4 OF SEC. 4, TWP. 28-S, R-2-E OF THE 6TH PM, SEDGWICK COUNTY, KANSAS, TOGETHER WITH THE SW 1/4 OF THE NW 1/4 OF SAID SEC. 4, ALL BEING SUBJECT TO ROAD RIGHTS-OF-WAY OF RECORD.

BENCHMARK:  
 CONW BENCHMARK SOUTHWEST CORNER OF INTERSECTION  
 53.00 FT. SOUTH OF CENTERLINE  
 43.0 FT. WEST OF CENTERLINE  
 19.00 FT. SOUTHWEST OF CENTER OF POWER POLE  
 8.00 FT. SOUTHWEST OF CENTER OF GUY POLE  
 70.50 FT. SOUTHWEST OF SECTION CORNER IRON  
 ELEV.: 1393.08 (NGVD 29)