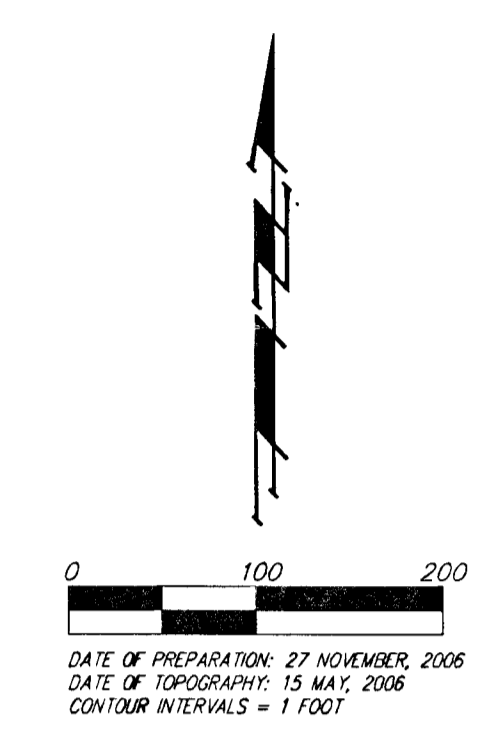
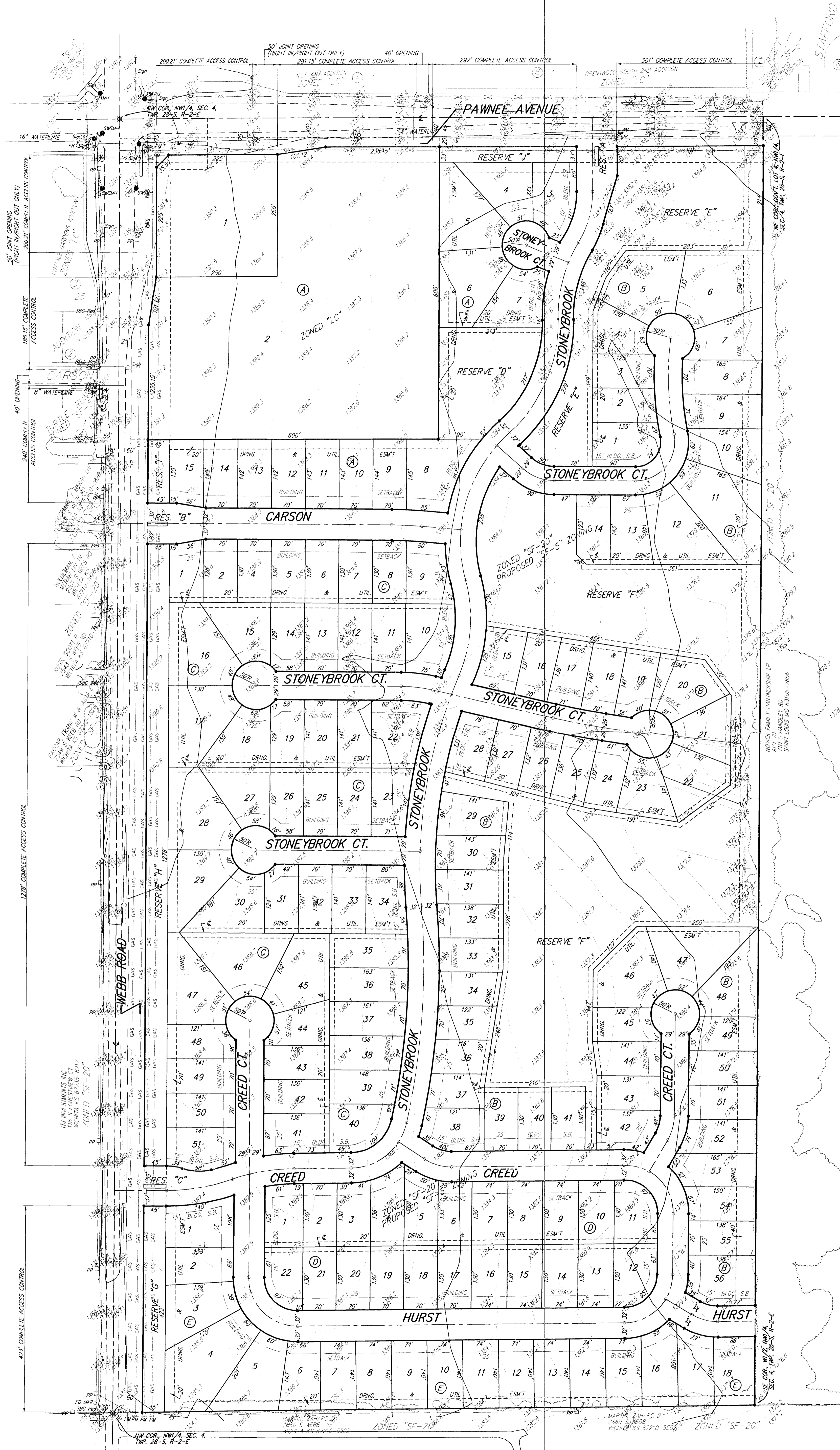


PRELIMINARY PLAT
CHANTILLY PLACE ADDITION
 WICHITA, SEDGWICK COUNTY, KANSAS



DATE OF PREPARATION: 27 NOVEMBER 2008
 DATE OF TYPING: 15 MAY 2009
 CONTOUR INTERVALS = 1 FOOT

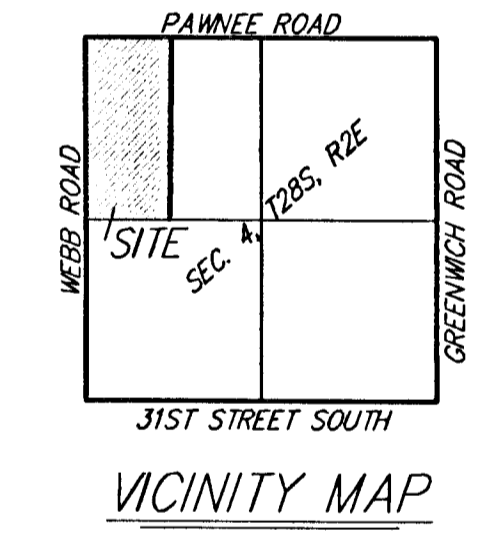
OWNER/DEVELOPER:
 SOGORA LAND COMPANY
 227 N. WOOD ST., 400
 WICHITA, KS 67203
 PH: 316-263-1201

LEGAL DESCRIPTION:
 GOVERNMENT LOT 4 IN THE NW 1/4 OF SEC. 4, TWP. 28-S, R-2-E OF THE 6TH P.M., SEDGWICK COUNTY, KANSAS, TOGETHER WITH THE SW 1/4 OF THE NW 1/4 OF SAID SEC. 4, ALL BEING SUBJECT TO ROAD RIGHTS-OF-WAY OF RECORD.

BOUNDARIES:
 CORNER: SOUTHWEST CORNER OF INTERSECTION 51.00 FT. SOUTH OF CENTERLINE 41.0 FT. WEST OF CENTERLINE 19.70 FT. SOUTHWEST OF CENTER OF POWER POLE 8.50 FT. SOUTHWEST OF GUY POLE 70.50 FT. SOUTHWEST OF SECTION CORNER IRON ELEV. 1333.08 (NGVD 29)

• = REBAR W/ "BAUGHMAN" CAP (SET)
 ⓧ = IRON PIPE (FOUND)

- PP = Power Pole
- TR = Transformer
- SD = 500' Private
- FD = 100' Private
- FM = 50' Private
- SM = Stormwater Street Manhole
- TM = Traffic Manhole
- WM = Water Manhole
- FM = Fire Manhole
- SP = Sign
- PL = Pipeline Marker



RESERVE USES:

RESERVES "A", "B", AND "C" ARE HEREBY RESERVED FOR OPEN SPACE, LANDSCAPING, DRAINAGE PURPOSES, UTILITIES, ENTRY MONUMENTS, AND STREETS.

RESERVE "D" IS HEREBY RESERVED FOR SWIMMING POOLS AND RELATED FACILITIES, OPEN SPACE, LANDSCAPING, PARKING, BERMS, SIDEWALKS, DRAINAGE PURPOSES, RECREATIONAL AREAS, AND UTILITIES AS CONFINED TO EASEMENTS.

RESERVE "E" IS HEREBY RESERVED FOR OPEN SPACE, LANDSCAPING, BERMS, LAKES, DRAINAGE PURPOSES, SIDEWALKS, GAZEBOS, UTILITIES AS CONFINED TO EASEMENTS, AND GAS LINES AS CONFINED TO EASEMENTS.

RESERVE "F" IS HEREBY RESERVED FOR OPEN SPACE, LANDSCAPING, BERMS, LAKES, DRAINAGE PURPOSES, SIDEWALKS, GAZEBOS, AND UTILITIES AS CONFINED TO EASEMENTS.

RESERVES "G", "H", "I", AND "J" ARE HEREBY RESERVED FOR OPEN SPACE, LANDSCAPING, BERMS, ENTRY MONUMENTS, DRAINAGE PURPOSES, AND GAS LINES AS CONFINED TO EASEMENTS.