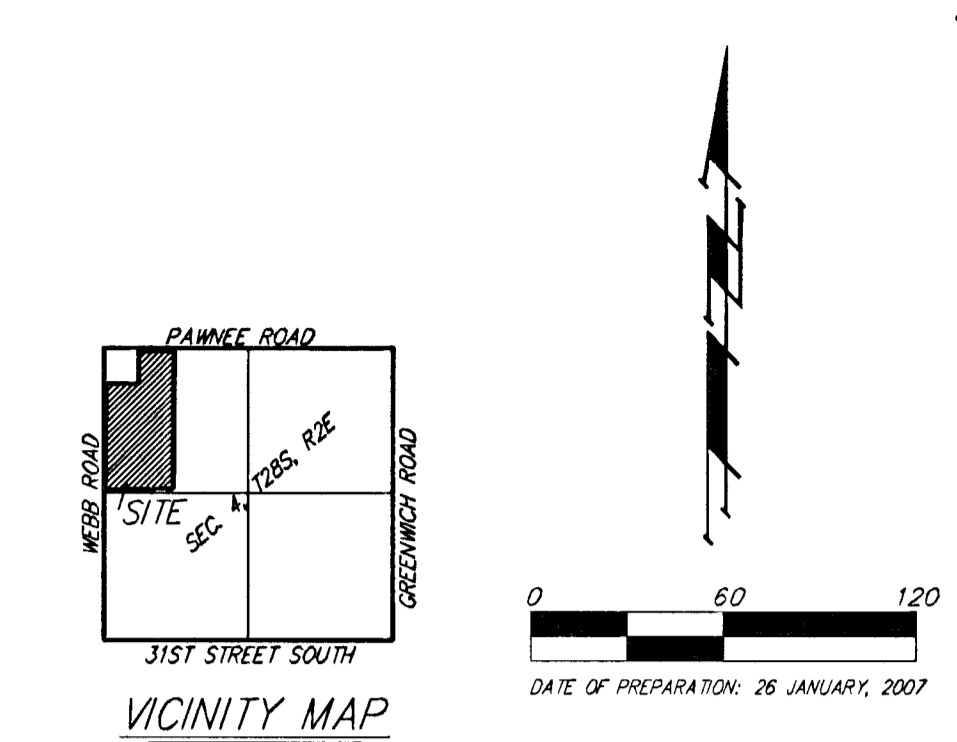
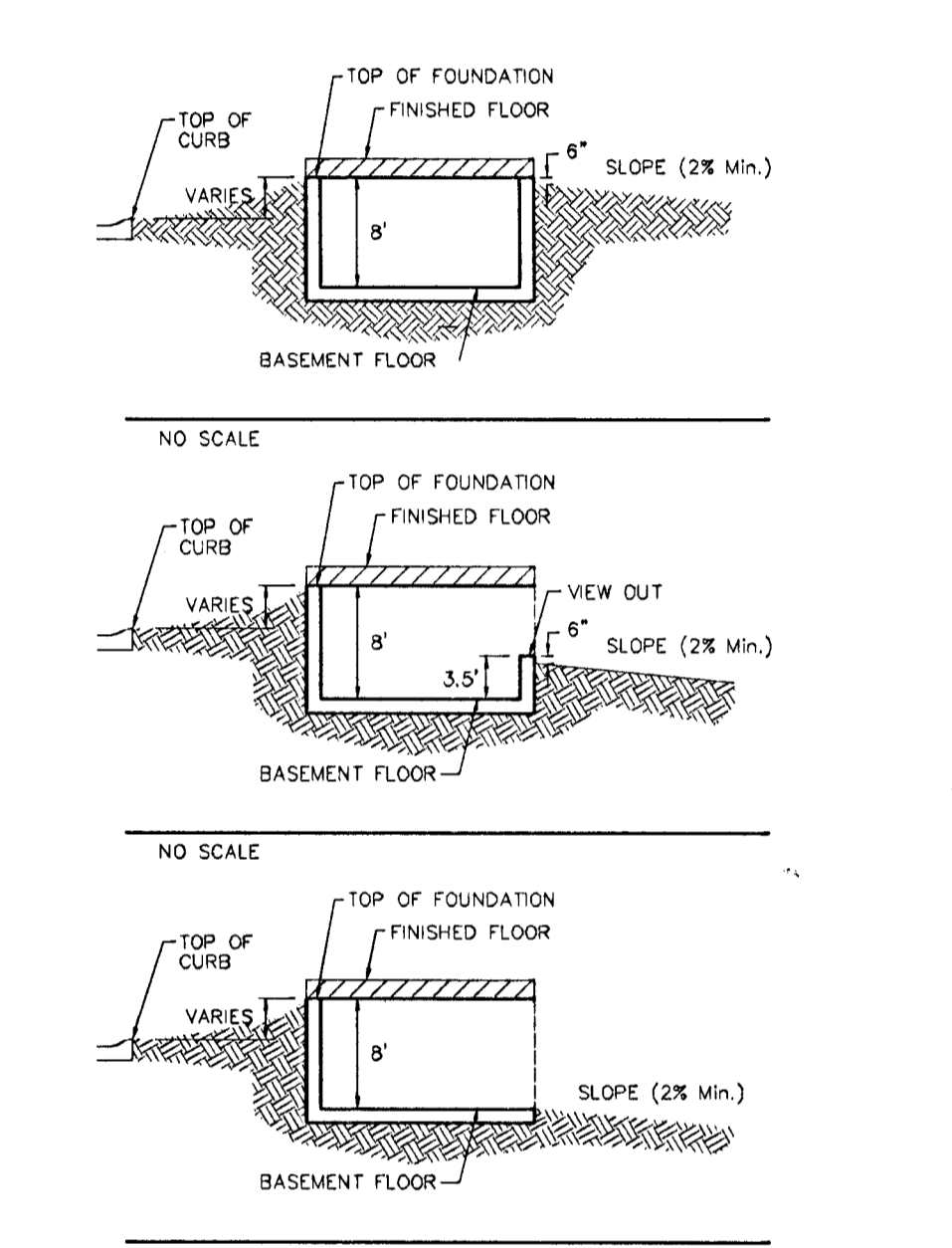


GRADING PLAN CHANTILLY PLACE ADDITION WICHITA, SEDGWICK COUNTY, KANSAS



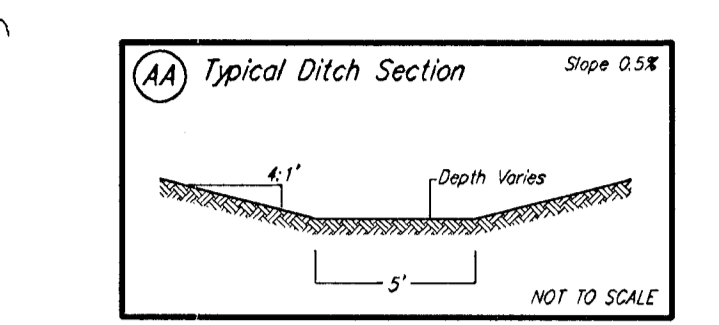
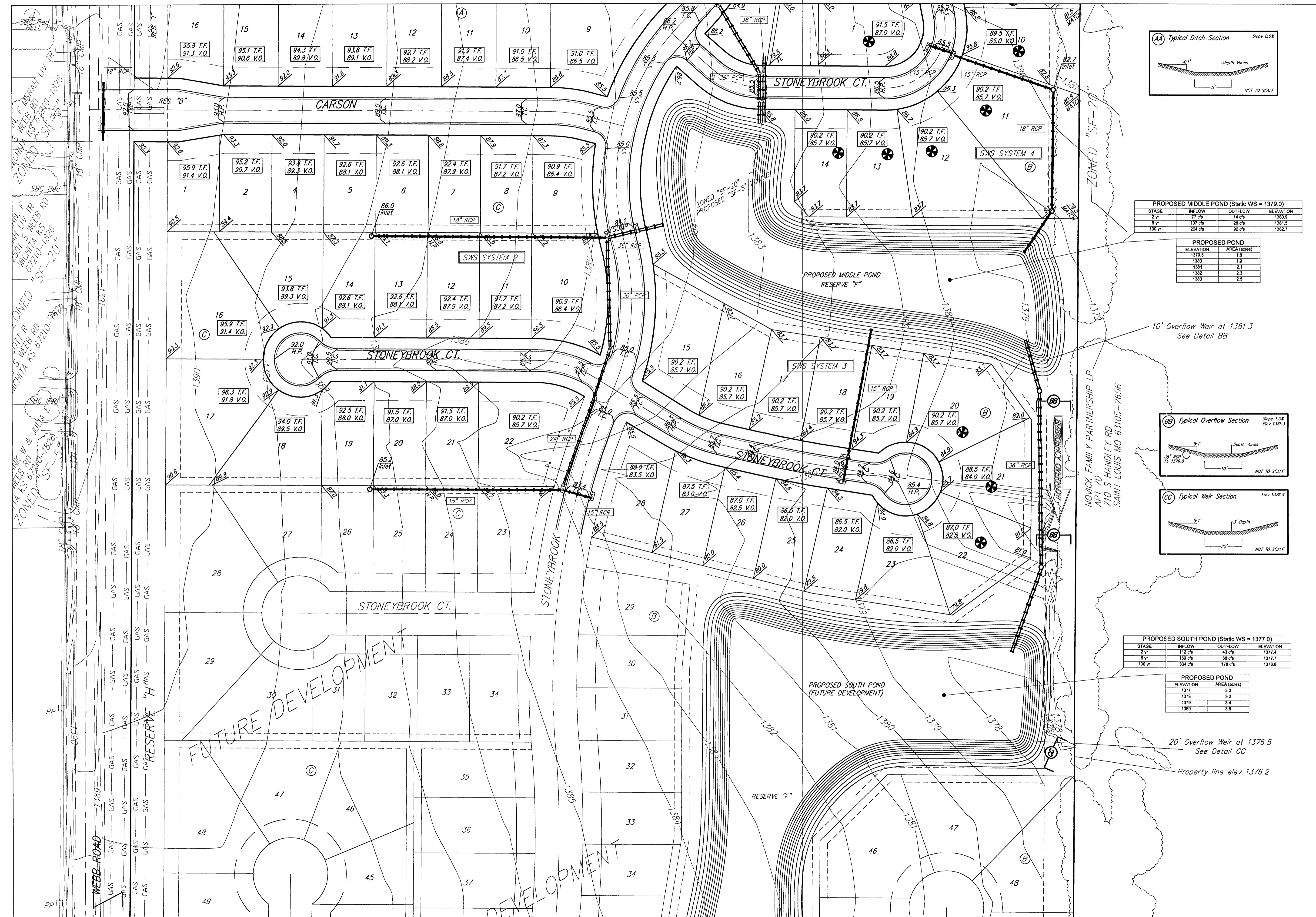
BENCHMARK:
COW BENCHMARK SOUTHWEST CORNER OF INTERSECTION
53.00 FT. SOUTH OF CENTERLINE
47.0 FT. WEST OF CENTERLINE
15.70 FT. SOUTHWEST OF CENTER OF POWER POLE
85.50 FT. SOUTHWEST OF CUIV POLE
70.50 FT. SOUTHWEST OF SECTION CORNER IRON
ELEV= 1393.08 (NGVD 29)



- NOTES:**
1. PROPOSED TOP OF FOUNDATION ELEVATIONS ARE SHOWN ON PLANS. CONTRACTOR TO SET FINISHED FLOOR AND GARAGE FLOOR ELEVATIONS. ALL STREET ELEVATIONS SHOWN ON PLANS ARE FOR TOP OF CURB (FULL-HEIGHT).
 2. THIS GRADING PLAN IS DESIGNED WITH VIEW-OUTS AND WALK-OUTS. ELEVATIONS SHOWN AS XX.X V.O. DEPICT VIEW-OUT STRUCTURES. ELEVATIONS SHOWN AS XX.X H.O. DEPICT WALK-OUT STRUCTURES.
 3. ALL LOTS SHALL MEET MINIMUM PAD REQUIREMENT AS SHOWN ON THE RECORDED PLAT.

MINIMUM BUILDING PAD ELEVATIONS FOR LOWEST OPENING TO THE STRUCTURES		
LOT	BLOCK	ELEVATION MIN.
1 - 6	C	1387.7
11 - 22	C	1385.0
23 - 28	C	1382.0

4. LOT DIMENSIONS HAVE BEEN OMITTED ON THIS PLAN. REFER TO THE RECORDED PLAT FOR FINAL DIMENSION, EASEMENT, & BUILDING SETBACK INFORMATION.
5. HOUSE PAD ELEVATIONS DEPICTED WITH BOLD OUTLINES AND NOTED WITH THIS SYMBOL INDICATE THAT DEEP FOOTINGS OR DEEP FOUNDATIONS MAY BE REQUIRED.
6. A DRAINAGE PLAN HAS BEEN DEVELOPED FOR THIS SUBDIVISION AND IS ON FILE WITH THE CITY OF WICHITA, KANSAS. DRAINAGE INTENT SHALL REMAIN AS DEPICTED OR AS MODIFIED WITH THE APPROVAL OF THE CITY ENGINEER OF THE CITY OF WICHITA, KANSAS. NO OBSTRUCTIONS WHICH IMPEDE THE FLOW OF THIS DRAINAGE PLAN SHALL BE ALLOWED.
7. ALL ELEVATIONS SHOWN ARE IN NVGD.



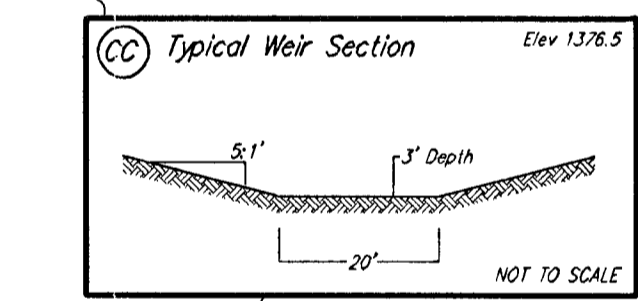
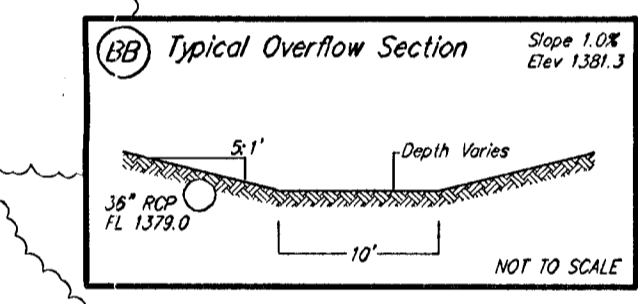
PROPOSED MIDDLE POND (Static WS = 1379.0)

STAGE	INFLOW	OUTFLOW	ELEVATION
2 yr	77 cfs	14 cfs	1380.9
5 yr	101 cfs	28 cfs	1381.5
100 yr	204 cfs	80 cfs	1382.7

PROPOSED POND

ELEVATION	AREA (sqft)
1379.5	1.8
1380	1.9
1381	2.1
1382	2.3
1383	2.5

10' Overflow Weir at 1381.3
See Detail BB



PROPOSED SOUTH POND (Static WS = 1377.0)

STAGE	INFLOW	OUTFLOW	ELEVATION
2 yr	112 cfs	43 cfs	1377.4
5 yr	158 cfs	68 cfs	1377.7
100 yr	304 cfs	178 cfs	1378.8

PROPOSED POND

ELEVATION	AREA (sqft)
1377	3.2
1378	3.2
1379	3.4
1380	3.6

20' Overflow Weir at 1376.5
See Detail CC

Property line elev 1376.2