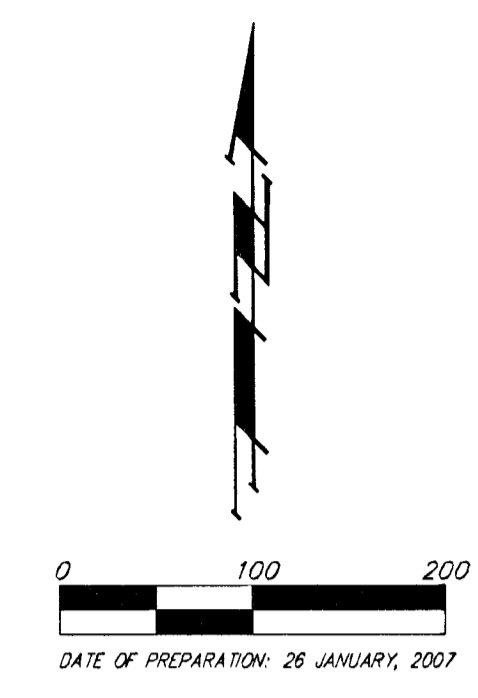
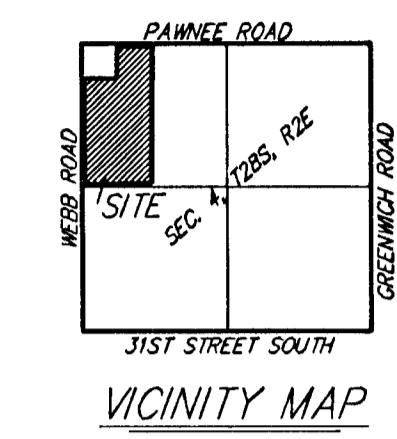
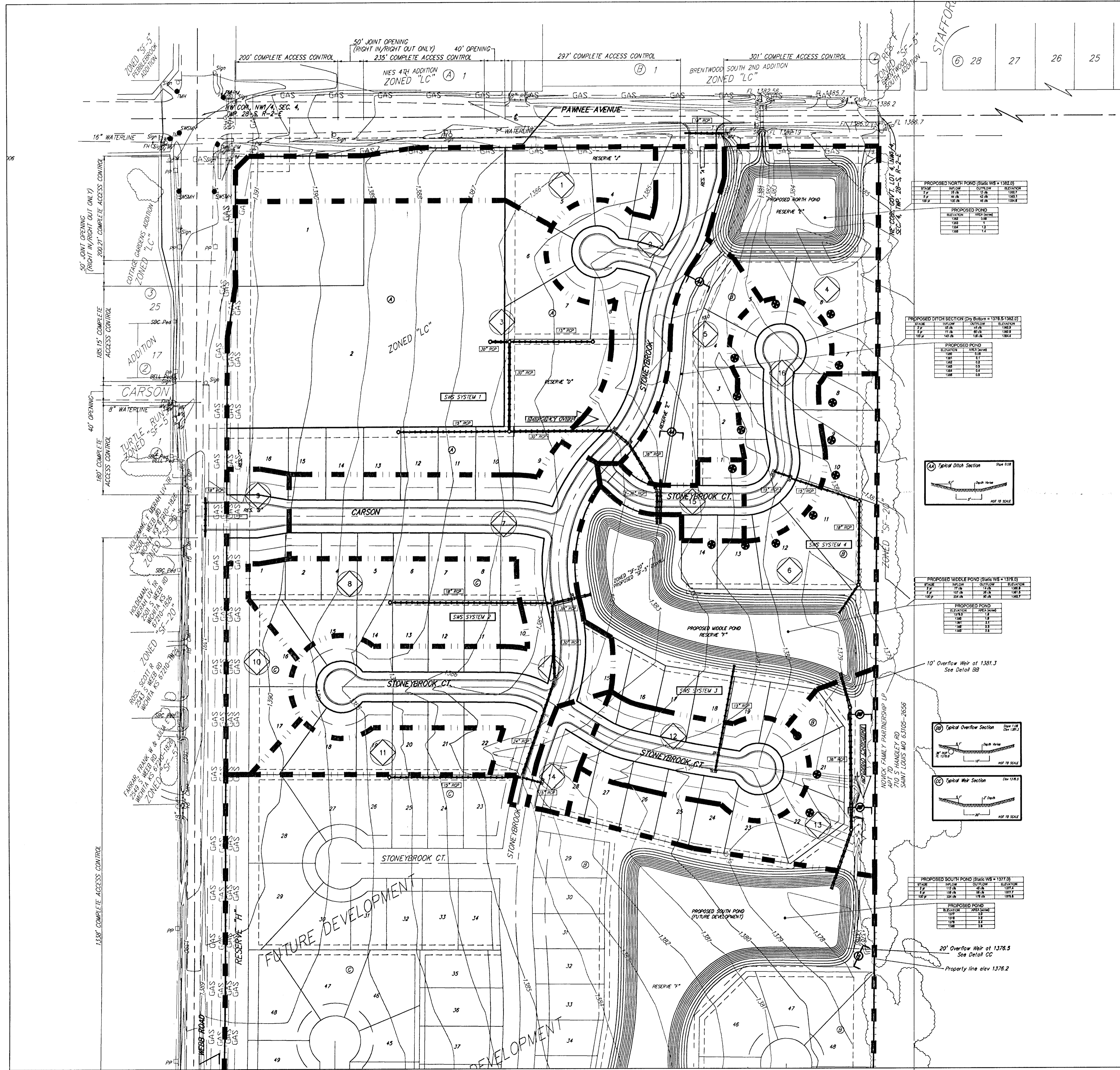


DRAINAGE PLAN

CHANTILLY PLACE ADDITION

WICHITA, SEDGWICK COUNTY, KANSAS



MINIMUM BUILDING PAD ELEVATIONS FOR LOWEST OPENING TO THE STRUCTURES

LOT	BLOCK	ELEVATION
1 - 6	C	1,387.7
11 - 22	C	1,385.0
23 - 28	C	1,382.0

BENCHMARK:
 COW BENCHMARK SOUTHWEST CORNER OF INTERSECTION
 53.00 FT. SOUTH OF CENTERLINE
 47.0 FT. WEST OF CENTERLINE
 19.70 FT. SOUTHWEST OF CENTER OF POWER POLE
 8.50 FT. SOUTHWEST OF GUY POLE
 70.50 FT. SOUTHWEST OF SECTION CORNER IRON
 ELEV = 1393.08 (NGVD 29)

Existing Intensity	2yr	5yr	100yr	Developed Intensity	2yr	5yr	100yr
Rational C	0.38	0.42	0.57	Rational C	0.50	0.54	0.76

Basin ID	Area acres	Existing Flowrates			Developed Flowrates		
		2-yr cfs	5-yr cfs	100-yr cfs	2-yr cfs	5-yr cfs	100-yr cfs
1	1.9	2.8	3.6	8.0	3.6	4.7	11
2	2.4	3	5	10	5	6	13
3	8.1	11.8	16	34	16	20	45
4	2.4	3.5	4.8	10	4.6	5.9	13
5	1.5	2.2	2.9	6.3	2.9	3.7	8.4
6	5.3	7.7	10	22	10	13	30
7	4.8	7.0	9.2	20	9.2	11.8	27
8	2.0	2.9	3.8	8.4	3.8	4.9	11
9	0.5	0.7	1.0	2.1	1.0	1.2	2.8
10	0.9	1.3	1.7	3.8	1.7	2.2	5.0
11	0.9	1.3	1.7	3.8	1.7	2.2	5.0
12	1.5	2.2	2.9	6.3	2.9	3.7	8.4
13	2.1	3.1	4.0	8.8	4.0	5.2	12
14	0.5	0.7	1.0	2.1	1.0	1.2	2.8
15	0.6	0.9	1.1	2.5	1.1	1.5	3.4
16	1.4	2.0	2.7	5.9	2.7	3.4	7.8
TOTAL	37	64	70	155	70	91	208

Notes:

There is no FEMA Special Flood Hazard Area on this property as of January 26, 2007.

The south pond is expected in future development and is not included in this addition. The upper 2 ponds and ditch are to be constructed in this addition. The south future pond was modeled and a 100-yr WS was calculated.