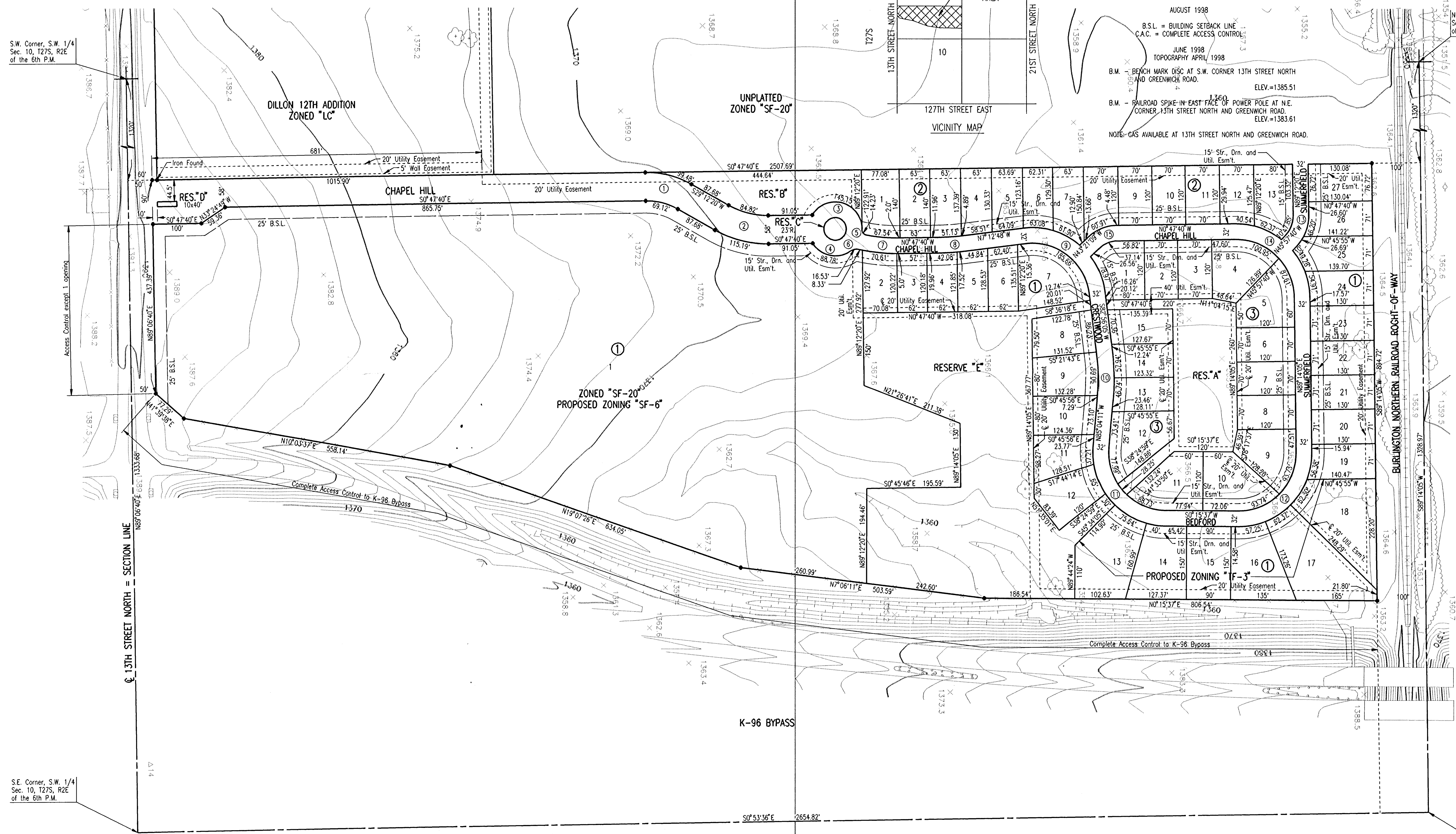


PRELIMINARY PLAT OF
CHAPEL HILL ADDITION
 TO WICHITA, SEDGWICK COUNTY, KANSAS

OWNER: BOARD OF TRUSTEES
 CHAPEL HILL FELLOWSHIP AT UNITED METHODIST CHURCH
 c/o HENRY HELGERSON
 4009 HAMMOND
 WICHITA, KANSAS 67218

ENGINEER: PROFESSIONAL ENGINEERING CONSULTANTS, P.A.
 303 S. TOPEKA
 WICHITA, KANSAS 67202



CURVE TABLE

① = CURVE NUMBER

CURVE NO. 1	190.0'	Δ=30°00'00"	132.0'
CURVE NO. 2	162.0'	Δ=30°00'00"	220.0'
CURVE NO. 3	55.0'	Δ=151°12'40"	55.0'
CURVE NO. 4	162.0'	Δ=92°28'55"	25.0'
CURVE NO. 5	10.0'	Δ=81°31'13"	130.0'
CURVE NO. 6	20.0'	Δ=47°22'00"	130.0'
CURVE NO. 7	336.14'	Δ=11°30'44"	368.14'
CURVE NO. 8	500.0'	Δ=6°25'08"	532.0'
CURVE NO. 9	150.0'	Δ=90°08'53"	118.0'
CURVE NO. 10	500.0'	Δ=11°59'44"	468.0'
CURVE NO. 11	118.0'	Δ=3°49'13"	150.0'
CURVE NO. 12	118.0'	Δ=91°01'32"	150.0'
CURVE NO. 13	61.16'	Δ=44°50'00"	93.16'
CURVE NO. 14	120.0'	Δ=90°01'45"	152.0'
CURVE NO. 15	50.0'	Δ=42°33'29"	82.0'

DSNR: SANCHEZ OPER: DEP SCALE: 1"=100.00
 02/19/97 19:20:09 PRELIM 07-30-1998 02:19:15 pm

S.E. Corner, S.W. 1/4
 Sec. 10, T27S, R2E
 of the 6th P.M.

N.E. Corner, S.W. 1/4
 Sec. 10, T27S, R2E
 of the 6th P.M.

???