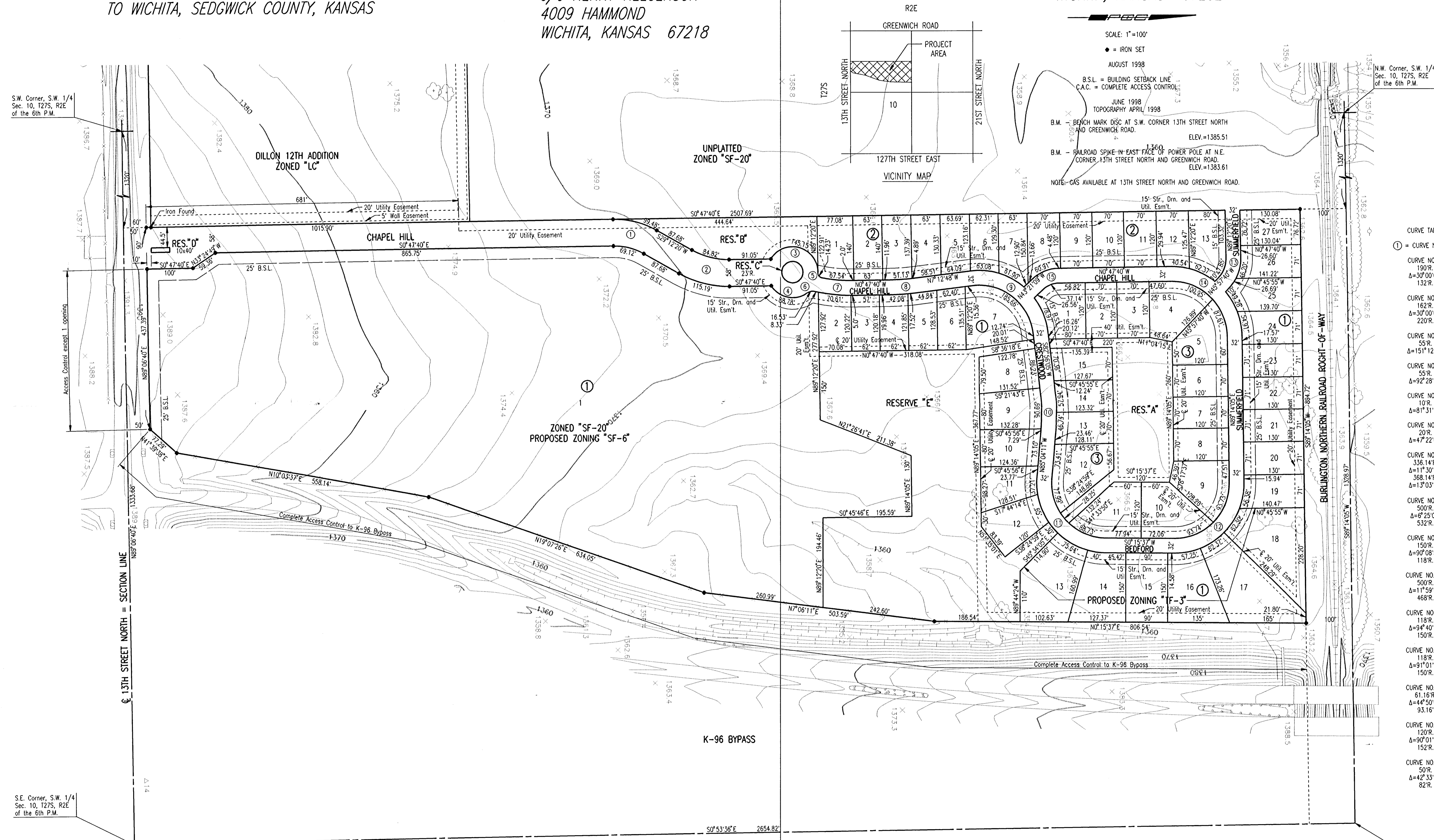


PRELIMINARY PLAT OF  
**CHAPEL HILL ADDITION**  
 TO WICHITA, SEDGWICK COUNTY, KANSAS

OWNER: BOARD OF TRUSTEES  
 CHAPEL HILL FELLOWSHIP AT UNITED METHODIST CHURCH  
 c/o HENRY HELGERSON  
 4009 HAMMOND  
 WICHITA, KANSAS 67218

ENGINEER: PROFESSIONAL ENGINEERING CONSULTANTS, P.A.  
 303 S. TOPEKA  
 WICHITA, KANSAS 67202



SCALE: 1"=100'

• = IRON SET

AUGUST 1998

B.S.L. = BUILDING SETBACK LINE

C.A.C. = COMPLETE ACCESS CONTROL

JUNE 1998

TOPOGRAPHY APRIL 1998

B.M. = BENCH MARK DISC AT S.W. CORNER 13TH STREET NORTH AND GREENWICH ROAD. ELEV.=1385.51

B.M. = RAILROAD SPIKE-IN EAST FACE OF POWER POLE AT N.E. CORNER 13TH STREET NORTH AND GREENWICH ROAD. ELEV.=1383.61

NOTE: GAS AVAILABLE AT 13TH STREET NORTH AND GREENWICH ROAD.

CURVE TABLE

① = CURVE NUMBER

CURVE NO. 1

190.R

Δ=30°00'00"

132.R

CURVE NO. 2

162.R

Δ=30°00'00"

220.R

CURVE NO. 3

55.R

Δ=151°12'40"

132.R

CURVE NO. 4

55.R

Δ=92°28'55"

132.R

CURVE NO. 5

10.R

Δ=81°31'15"

132.R

CURVE NO. 6

55.R

Δ=47°22'00"

132.R

CURVE NO. 7

336.14.R

Δ=11°30'44"

368.14.R

Δ=13°03'48"

19.R

CURVE NO. 8

500.R

Δ=6°25'08"

532.R

CURVE NO. 9

150.R

Δ=90°08'53"

118.R

Δ=11°59'44"

468.R

CURVE NO. 10

500.R

Δ=11°59'44"

468.R

CURVE NO. 11

118.R

Δ=94°40'13"

150.R

CURVE NO. 12

118.R

Δ=91°01'32"

150.R

CURVE NO. 13

61.16.R

Δ=44°50'00"

93.16.R

CURVE NO. 14

120.R

Δ=90°01'45"

152.R

CURVE NO. 15

50.R

Δ=42°33'29"

82.R

N.E. Corner, S.W. 1/4

Sec. 10, T27S, R2E

of the 6th P.M.

S.W. Corner, S.W. 1/4  
 Sec. 10, T27S, R2E  
 of the 6th P.M.

S.E. Corner, S.W. 1/4  
 Sec. 10, T27S, R2E  
 of the 6th P.M.

DSNR: SANCHEZ OPER: DEP SCALE: 1"=100.00  
 CA: 1987/9/26/99 PRELIM 07-30-1998 02:19:15 pm