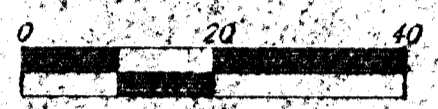
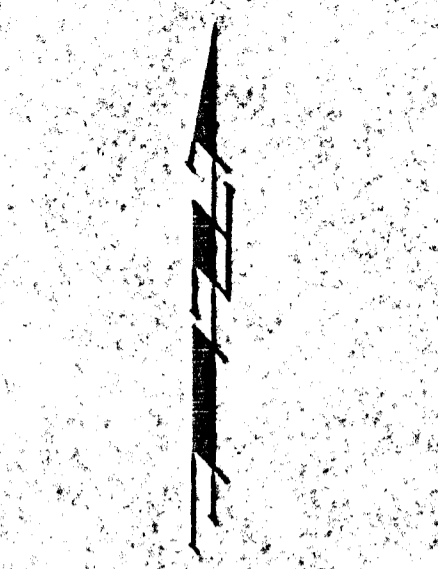
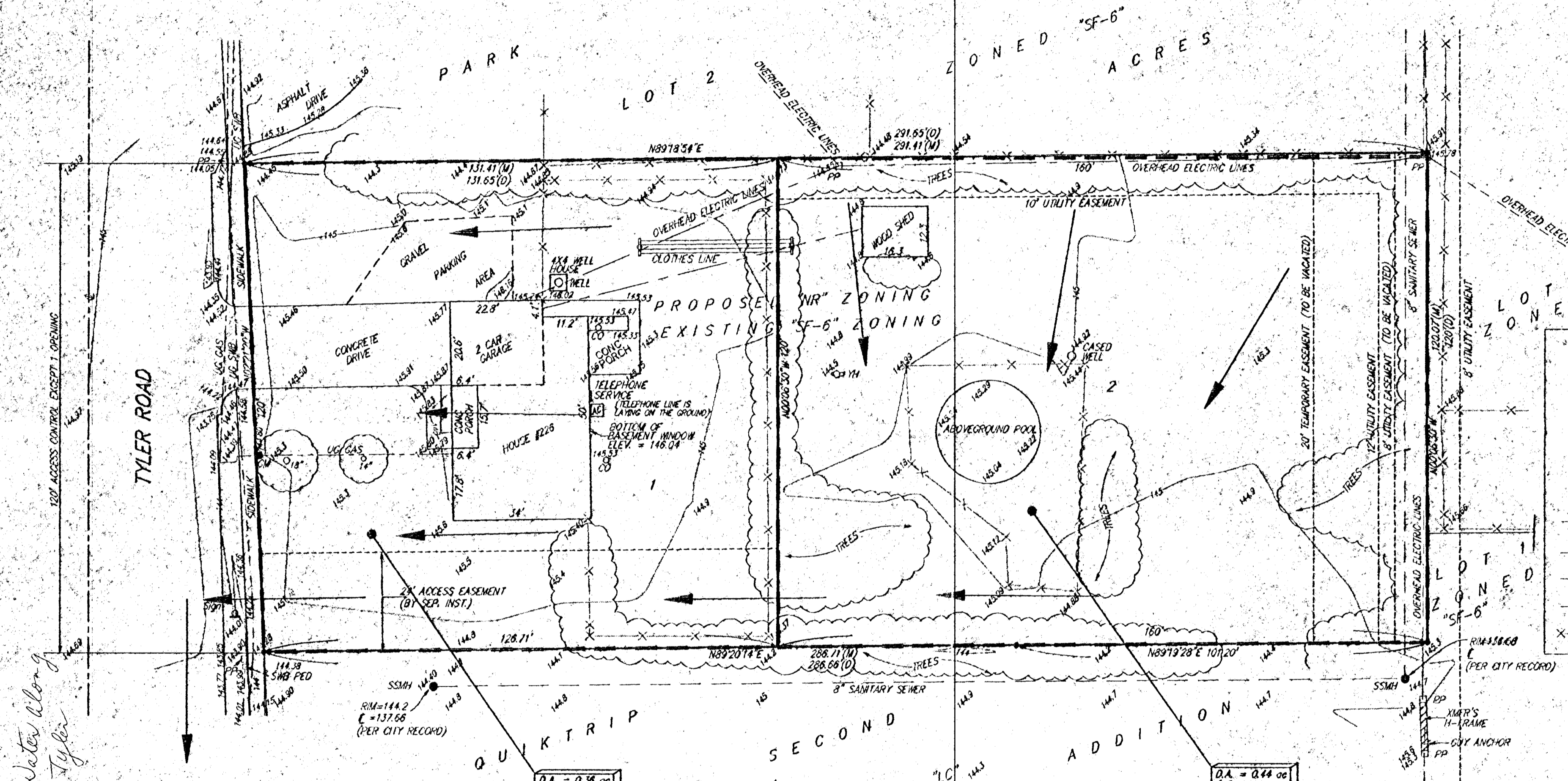


DRAINAGE PLAN CHAPPELLE ADDITION WICHITA, SEDGWICK COUNTY, KANSAS



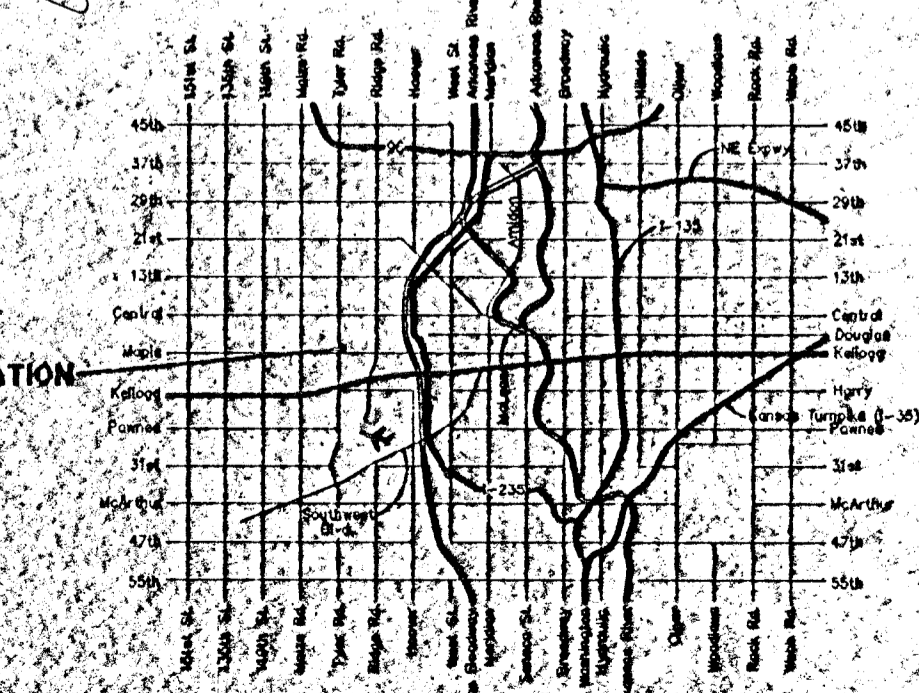
(M) = MEASURED
(D) = DESCRIBED
● = #4 REBAR W/ "BAUGHMAN" CAP (SEE)



LEGEND

- CO = Cleanout
- PP = Power Pole
- △ Sign = Sign
- SSMW = Sanitary Sewer Manhole
- SSB Ped = Southwestern Bell Pedestal
- NTR = Transformer
- ⊕ M = Yard Hydrant (Spigot)
- CM = Gas Meter

— ELECTRIC LINE
— GAS LINE
— SHD TELEPHONE LINE
— SANITARY SEWER LINE
— FENCE



VICINITY MAP

D.A. = 0.36 cc
T₀ = 0.40
Q₀ = 0.8 cfs
Q₁ = 0.7 cfs
Q₂ = 1.1 cfs

D.A. = 0.14 cc
T₀ = 0.85
Q₀ = 1.8 min
Q₁ = 1.4 cfs
Q₂ = 1.7 cfs
Q₃ = 2.8 cfs

NOTE: The proposed drainage plan provided herein is a preliminary defined plan to follow for design. It is recognized and assumed that upon the final design of street and storm sewer improvements within this plot that the designer will modify or alter the general drainage plan as necessary in order to implement the installation of the improvements to obtain the most economical design and construction possible.

20 OCT 1998

BAUGHMAN COMPANY P.A.
ENGINEERING, SURVEYING, & PLANNING

318 E. 22ND ST. WICHITA, KANSAS 67211

BENCHMARK
NE CORNER INTERSECTION
60.1' NORTH AND 31.3' EAST OF
CENTER LINE BOTH PA & SW TO
SECTION CORNER R/W
BENCHMARK IN TURN ISLAND
ELEVATION = 144.12 CITY DATUM