

Legal Description:
 That part vacated 26th St. North lying between Block 4 and Block 1, in Agee-Hunter Addition, Wichita, Sedgwick County, Kansas, described as beginning at the S.W. corner of said Block 4; thence East along the South line of said Block 4, 245.28 feet; thence South 59.72 feet to a point 245.07 feet East of the N.W. corner of said Block 1; thence West along the North line of said Block 1, 245.07 feet to the N.W. of said Block 1; thence North 59.93 feet to the point of beginning.

Gross Size
 14,667.02 Sq. Ft.
 0.34 Acres±

Net Size
 14,667.02 Sq. Ft.
 0.34 Acres±

Minimum Lot Size
 6,586.41 Sq. Ft.
 0.15 Acres±

Zoning
 SF-5 Single Family

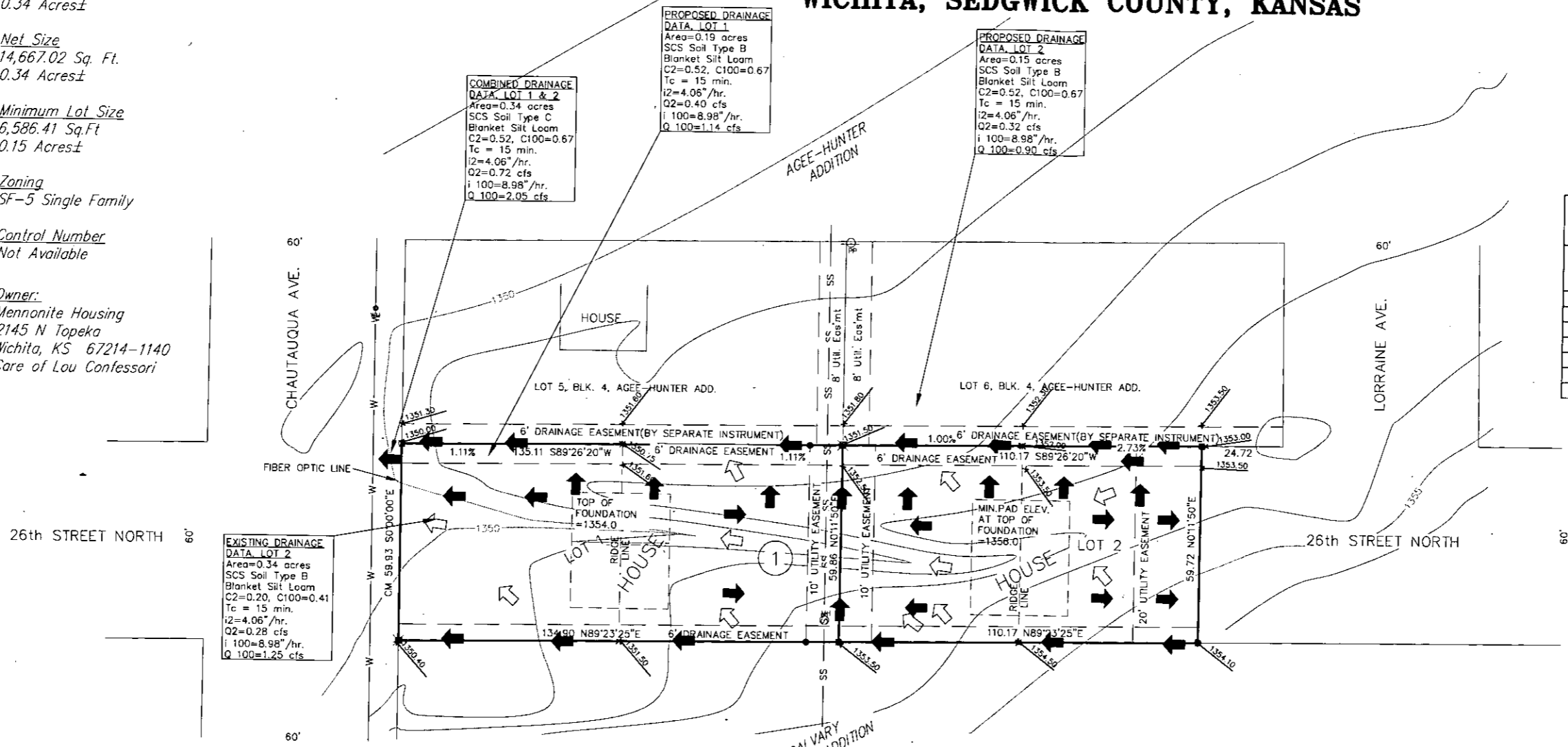
Control Number
 Not Available

Owner:
 Mennonite Housing
 2145 N Topeka
 Wichita, KS 67214-1140
 Care of Lou Confessori

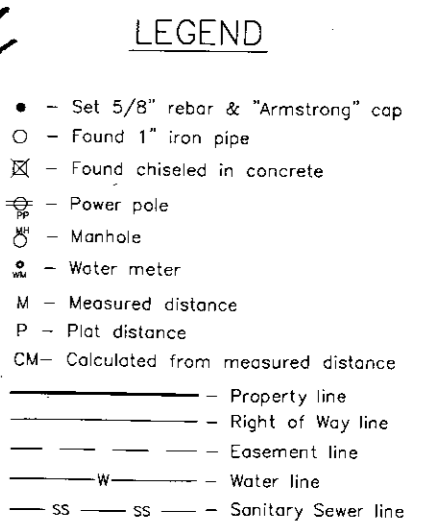
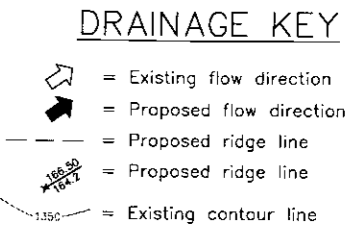
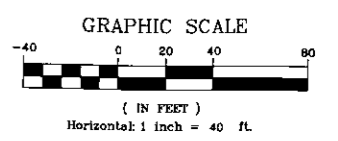
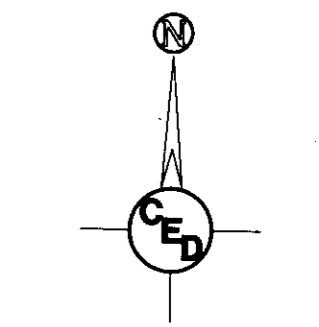
DRAINAGE AND FOUR CORNER GRADING PLAN

CHAUTAUQUA ADDITION

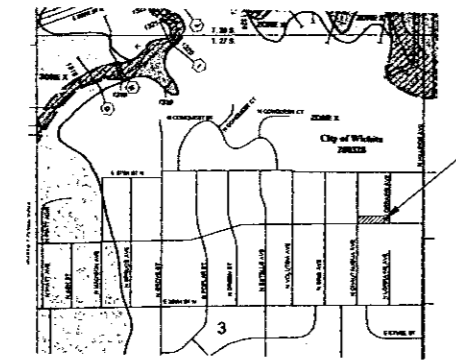
WICHITA, SEDGWICK COUNTY, KANSAS



FOUNDATION ELEVATIONS (NGVD DATUM)		
TOP OF FOUNDATION = TOP OF ROLL CURB + 2'-8" (MIN)		
LOT	BLOCK	MIN. TOP OF STANDARD BASEMENT FOUNDATION
1	1	1354.0
2	1	1356.0

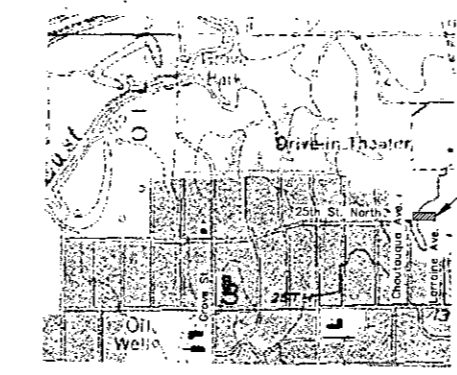


FLOOD ZONE MAP
 Sec. 3, T27S, R1E



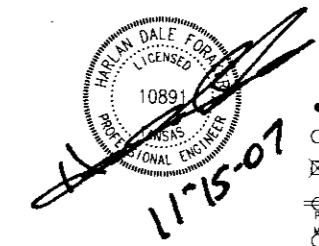
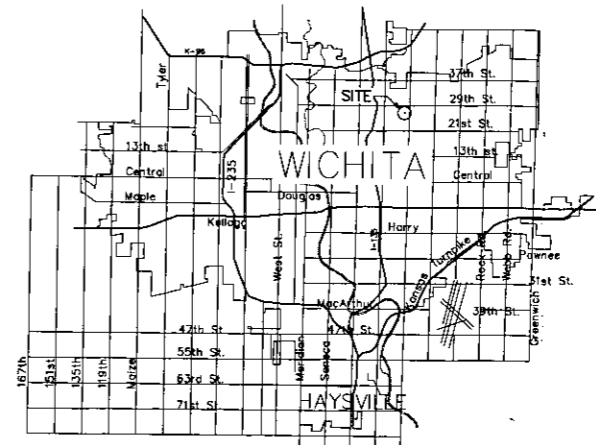
FLOOD ZONE:
 Subject property is in Zone X, as shown of Federal Emergency Management Agency (FEMA) Flood Insurance Rate Map (FIRM) for Wichita, Sedgwick County, Kansas, Panel Number 200326 0036 E, effective February 2, 2007.

QUADRANGLE MAP
 Sec. 3, T27S, R1E



WICHITA EAST QUADRANGLE

VICINITY MAP



MENNONITE HOUSING REHABILITATION SERVICES, INC.
CHAUTAUQUA ADDITION
 WICHITA, KANSAS
 CED PROJ. NO.: 20071575

CERTIFIED ENGINEERING DESIGN, P.A.

810 WEST DOUGLAS, SUITE C
 WICHITA, KANSAS 67203
 PH.(316)262-8808 FAX.(316)262-1669

DESIGNED: HDF	SCALE: 1"=20'	SHEET
DRAWN: BKS	DATE: 9/07	1
CHECKED: HDF	CED FILE: 32406.DWG	TOTAL 1