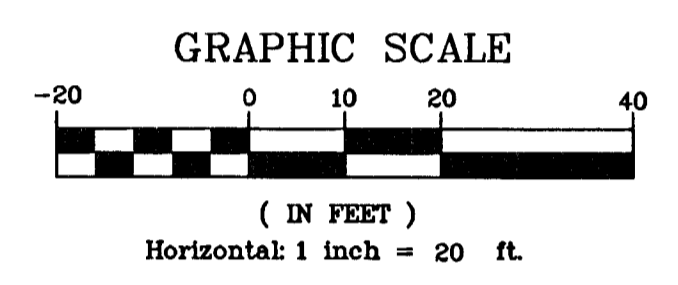
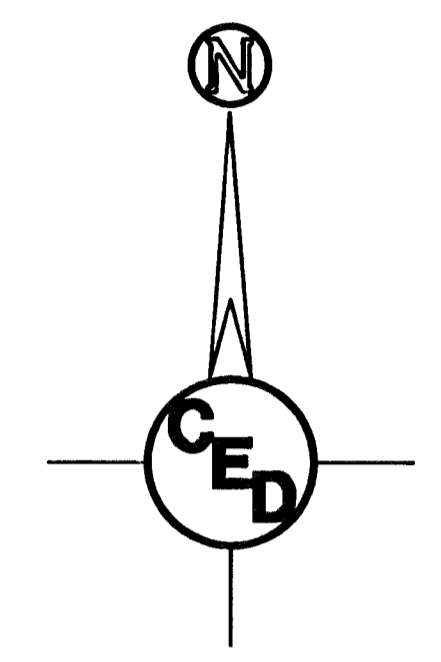
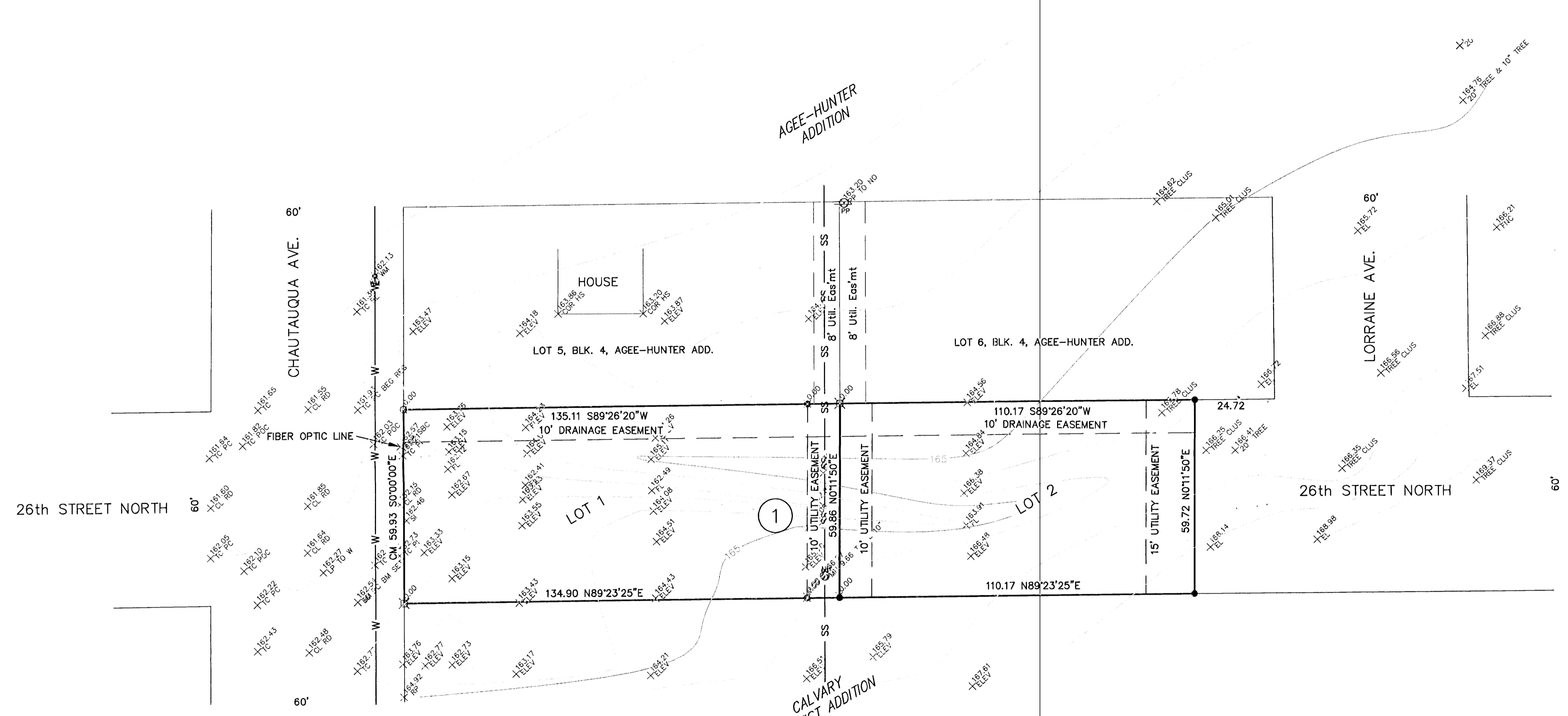


PRELIMINARY PLAT CHAUTAQUA ADDITION WICHITA, SEDGWICK COUNTY, KANSAS



LEGEND

- - Set 5/8" rebar & "Armstrong" cap
- - Found 1" iron pipe
- ⊗ - Found chiseled in concrete
- ⊕ - Power pole
- ⊙ - Manhole
- ⊗ - Water meter
- M - Measured distance
- P - Plat distance
- CM - Calculated from measured distance
- — — — — Property line
- — — — — Right of Way line
- - - - - Easement line
- W - Water line
- SS - SS - Sanitary Sewer line

Legal Description:
That part vacated 26th St. North lying between Block 4 and Block 1, in Agee-Hunter Addition, Wichita, Sedgwick County, Kansas, described as beginning at the S.W. corner of said Block 4; thence East along the South line of said Block 4, 245.28 feet; thence South 59.72 feet to a point 245.07 feet East of the N.W. corner of said Block 1; thence West along the North line of said Block 1, 245.07 feet to the N.W. of said Block 1; thence North 59.93 feet to the point of beginning.

Owner:
Mennonite Housing Rehabilitation Services, Inc.
2145 N Topeka
Wichita, KS 67214-1140
Care of Lou Confessori

Gross Size
14,667.02 Sq. Ft.
0.34 Acres±

Net Size
14,667.02 Sq. Ft.
0.34 Acres±

Minimum Lot Size
6,586.41 Sq.Ft
0.15 Acres±

Zoning
SF-5 Single Family

Control Number
Not Available

LOCATION MAP

