

Final Drainage Plan
Cheryl's Hollow
Wichita, KS
October 21, 2004

Ruggles & Bohm P.A.

Engineering, Surveying, Land Planning

Cheryl's Hollow Addition
City of Wichita, Kansas
Drainage Plan Supporting Documentation
October 7, 2004

Cheryl's Hollow Addition is located north of 13th Street North, ¼ mile west of 135th Street West. The site encompasses approximately 80 acres, and has points of drainage concentration near the southwest corner, middle east side, and northeast corner. Detention storage will be utilized to limit developed peak flows to existing condition peak flow rates.

South Drainage Basin to 13th Street North:

t = 53.2 ac

This developed basin consists of 36.2 acres of on-site drainage area combined with an off-site area of 17 acres, all draining to the north ditch of 13th Street and through an existing 42"x60" CMPA under 13th Street. The hydrological soil of the basin is Type C (USGS Soil Survey of Sedgwick County, Kansas).

Time of concentration for the entire southerly basin (on and off site areas) is determined as follows: Total longest path length = 1600 feet. Assume the first 400 feet is Short Grass Pasture at 0.5% slope, V1 = 0.20 f/s; the next 400 feet is Grassed Waterway at 0.5% slope, V2 = 0.20 f/s, assume balance of 800 feet is ditch flow at 2.0 f/s (V3). Time of Concentration is as follows:

$$T_c = \frac{400'}{(0.20 \text{ f/s})(60\text{s/min})} + \frac{400'}{(0.77\text{f/s})(60\text{s/min})} + \frac{800'}{(2.0 \text{ f/s})(60\text{s/min})}$$

$$T_c = 33 \text{ min} + 8.6 \text{ min} + 6.7 \text{ min} = 48 \text{ minutes.}$$

County records indicate an upstream drainage area of 72 acres for the 42"x60" CMPA under 13th Street, with a C factor of 0.40. Top of roadway over pipe = 1362.5, with an USFL of 1358.2 for the culvert pipe. This provides 4.3 feet of headwater (HW) for the culvert pipe. Assuming inlet control, and a HW of 4.3 feet, the culvert pipe can handle approximately 90 cfs (Hydraulic Charts for the Selection of Highway Culverts, FHA) reading the values for a 65"x40" CMPA.

The following southern basin values are taken to HEC1 to find the pre-developed flow to the culvert pipe under 13th Street North. Survey information indicates a total drainage area (natural) to the culvert of 47 acres.

BA = 47 Acres = 0.0734 Sq. Miles

SCS Lag = 0.6 Tc = .48 Hours

SCS CN = 81 (Small Grain Crops, Type C Soil, Good Condition, TR-55)

Rainfall event = 100 year, 24 hour storm, SCS Type II Distribution, total of 7.8 inches

The resulting Q100 = 95 cfs. This matches well with the pipe capacity indicated above.

The target flow from the developed subdivision combined with the undeveloped adjacent drainage basin will be 90 cfs. The detention pond flow cannot exceed this amount.

Developed Condition, South Basin: Plat drainage area to pond = 36.2 acres + 17 acres offsite. Composite CN = $\frac{17 \text{ ac}(81) + (36.2 \text{ ac})(94)}{53.2 \text{ acres}} = 90$

Use a developed time of concentration of 30 minutes, so $0.6T_c = 0.30$ hours = SCS Lag
 The pond will utilize a 3.8' wide notched weir for control, flow line elevation = 1359.0.
 Rating the weir with the equation $Q = CLH^{1.5}$, where $C = 3.0$, $l = 4'$, and H (depth) varies, the rating is:

3.8' Notched Weir Stage-Discharge (South Pond)

Elevation	H (feet)	Q (cfs)
1359	0	0
1359.5	0.5	4.0
1360	1	11.4
1360.5	1.5	20.9
1361	2	32.2
1361.5	2.5	45.0
1362	3	59.2
1362.5	3.5	74.6
1363	4	91.2
1363.5	4.5	108.8

Stage-Storage for the Proposed Pond is 1.9 acres at 1359, 2.2 acres at 1364.

Combining the developed basin characteristics and detention pond data to HEC1 result in a pond routing summary of $Q_{100} = 94$ cfs at 1363.07 elevation. See the attached HEC1 file RICKS.OUT for the calculations and report.

East Drainage Basin connecting to Copper Gate North Addition

From the Baughman Company, P.A. drainage plan for Copper Gate North, the receiving inlet allows for an offsite flow rate of 37.4 cfs. This will be the target outflow for the detention pond adjacent to Lots 17 and 18, Block A, Copper Gate North Addition.

The developed area draining to the pond location consists of 14.5 acres. Use a CN of 94 and T_c of 20 minutes for the developed condition. A static pool elevation of 1358 will be used for the pond, with a target 100 year water surface elevation of 1362.00.

Outlet flow from the pond will be controlled by a 24" RCP culvert connected to the storm water sewer system planned for Copper Gate North Addition, the connection point being between Lots 17 & 18, Block A.

Flow characteristics for the 24" culvert pipe are calculated using the FHA manual "Manual for the Selection of Highway Culverts". Based on inlet control, and available head, the outlet pipe can provide the following flows:

24" RCP Outlet Pipe

Elevation	Head (ft)	Q (cfs)
1358	-	-
1358.5	0.5	1
1359.0	1.0	4
1359.5	1.5	9
1360.0	2.0	13
1360.5	2.5	16
1361	3.0	22
1361.5	3.5	24
1362	4.0	29

Storage volumes are 0.8 acres at 1358, and 1.04 acres at 1363.

Routing through HEC-1 yields a peak outflow of 23.0 cfs at an elevation of 1361.24. This pond can be modified at the time of final design to conform to the storm water sewer system in Copper Gate North Addition.

North Drainage Basin:

The natural drainage concentrating at the northeast corner of the addition is 28.7 acres, with an SCS curve number of 81, and a Tc of 48 minutes. With this base information, HEC1 yields a pre developed Q100 of 58 cfs, which is the target flow of the detention pond.

In the developed condition, 24.1 acres of the subdivision drain to the new pond.

Developed CN = 94, with a Tc of 20 minutes.

Using a 4.5' wide notched weir for an outlet provides the following stage-discharge information:

4.5' Notched Weir Stage-Discharge (North Pond)

Stage
data is
at
1360.5,
acres at
1364.0

Elevation	H (feet)	Q (cfs)
1360.5	0	0
1361	0.5	4.8
1361.5	1	13.5
1362	1.5	24.8
1362.5	2	38
1363	2.5	53.4
1363.5	3	70
1364.0	3.5	88

storage
1.5 acres
elevation
and 2.1
elevation

Routing this pond in HEC1 results in an outflow of 47 cfs at an elevation of 1362.8, which is acceptable.

Please see the following pages for localized drainage calculations, inlet locations, storm water sewer system profiles, and other supporting information.

Storm Water Sewer System Design:

Design for the storm water sewer systems to serve this site utilize the following parameters:

Time of Concentration = 15 minutes (City of Wichita Minimum)

Runoff factors are for Type C Hydrologic Soils, ¼ acre lot size, per City of Wichita Interim Drainage and Storm Water Sewer Policy.

The rainfall intensity values are per said Attachment A, said drainage policy.

Each storm water sewer system has been modeled with StormCad (Hastead Methods) to determine the 100-year hydraulic grade line. In some instances, overspill to adjacent ponds is allowable for 100-year storm relief, although the systems are designed not to need this overspill

Calculations for localized runoff for the plat are as tabulated below:

BASIN	Description	Area (acres)	Tc (min)	C2	C100	I2	I100	Q2	Q100
A	Rear Yard	0.84	15	0.4	0.65	3.83	7.37	1.29	4.02
B	Rear Yard	0.49	15	0.4	0.65	3.83	7.37	0.75	2.35
C	Lots & Street	0.25	15	0.5	0.69	3.83	7.37	0.48	1.27
D	Lots & Street	0.32	15	0.5	0.69	3.83	7.37	0.61	1.63
E	Rear Yard	1.36	15	0.4	0.65	3.83	7.37	2.08	6.52
F	Rear Yard	0.35	15	0.4	0.65	3.83	7.37	0.54	1.68
G	Lots & Street	2.48	15	0.5	0.69	3.83	7.37	4.75	12.61
H	Lots & Street	2.89	15	0.5	0.69	3.83	7.37	5.53	14.70
I	Lots & Street	2.18	15	0.5	0.69	3.83	7.37	4.17	11.09
J	Rear Yard	1.72	15	0.4	0.65	3.83	7.37	2.64	8.24
K	Lots & Street	0.36	15	0.5	0.69	3.83	7.37	0.69	1.83
L	Lots & Street	0.38	15	0.5	0.69	3.83	7.37	0.73	1.93
M	Rear Yard	0.82	15	0.4	0.65	3.83	7.37	1.26	3.93
N	Lots & Street	0.64	15	0.5	0.69	3.83	7.37	1.23	3.25
O	Lots & Street	0.50	15	0.5	0.69	3.83	7.37	0.96	2.54
P	Lots & Street	1.10	15	0.5	0.69	3.83	7.37	2.11	5.59
Q	Lots & Street	3.34	15	0.5	0.69	3.83	7.37	6.40	16.98
R	Lots & Street	2.81	15	0.5	0.69	3.83	7.37	5.38	14.29
S	Rear Yard	1.76	15	0.4	0.65	3.83	7.37	2.70	8.43
T	Rear Yard	0.43	15	0.4	0.65	3.83	7.37	0.66	2.06
U	Rear Yard	1.07	15	0.4	0.65	3.83	7.37	1.64	5.13
V	Rear Yard	0.62	15	0.4	0.65	3.83	7.37	0.95	2.97
W	Lots & Street	2.56	15	0.5	0.69	3.83	7.37	4.90	13.02
X	Lots & Street	0.97	15	0.5	0.69	3.83	7.37	1.86	4.93
Y	Lots & Street	3.50	15	0.5	0.69	3.83	7.37	6.70	17.80

BASIN	Description	Area (acres)	Tc (min)	C2	C100	I2	I100	Q2	Q100
Z	Lots & Street	2.72	15	0.5	0.69	3.83	7.37	5.21	13.83
AA	Rear Yard	0.42	15	0.4	0.65	3.83	7.37	0.64	2.01
BB	Rear Yard	0.48	15	0.4	0.65	3.83	7.37	0.74	2.30
CC	Rear Yard	1.28	15	0.4	0.65	3.83	7.37	1.96	6.13
DD	Lots & Street	1.60	15	0.5	0.69	3.83	7.37	3.06	8.14
EE	Lots & Street	0.50	15	0.5	0.69	3.83	7.37	0.96	2.54
FF	Lots & Street	0.42	15	0.5	0.69	3.83	7.37	0.80	2.14
GG	Rear Yard	1.60	15	0.4	0.65	3.83	7.37	2.45	7.66
HH	Lots & Street	2.32	15	0.5	0.69	3.83	7.37	4.44	11.80
II	Lots & Street	1.12	15	0.5	0.69	3.83	7.37	2.14	5.70
JJ	Lots & Street	1.39	15	0.5	0.69	3.83	7.37	2.66	7.07
KK	Lots & Street	1.08	15	0.5	0.69	3.83	7.37	2.07	5.49
LL	Lots & Street	0.99	15	0.5	0.69	3.83	7.37	1.90	5.03
MM	Lots & Street	0.48	15	0.5	0.69	3.83	7.37	0.92	2.44
NN	Lots & Street	0.45	15	0.5	0.69	3.83	7.37	0.86	2.29
OO	Rear Yard	1.35	15	0.4	0.65	3.83	7.37	2.07	6.47
PP	Rear Yard	0.74	15	0.4	0.65	3.83	7.37	1.13	3.54
QQ	Lots & Street	0.59	15	0.5	0.69	3.83	7.37	1.13	3.00
RR	Lots & Street	1.85	15	0.5	0.69	3.83	7.37	3.54	9.41
SS	Lots & Street	1.82	15	0.5	0.69	3.83	7.37	3.49	9.26

The following pages contain the hydraulic performance calculations for each of the storm water sewer systems (1 through 11), along with a hydraulic profile for each system. Where multiple pipes are utilized, it is so noted on the documentation.

**STORM WATER SEWER SYSTEM
HYDRAULIC PROFILES**

**CHERYL'S HOLLOW
100-YEAR STORM EVENT**

Cheryl's Hollow Storm Water Sewer Line 1

Pipe	Up Node	Dn Node	Length (ft)	Size	Cap (cfs)	V avg (ft/s)	Up Invert (ft)	Dn Invert (ft)	S (ft/ft)	Q ² (cfs)
P-1	I-1	I-2	193	24 inch	16.28	2.25	1,361.20	1,360.20	0.005181	7.07
P-2	I-2	I-3	41	24 inch	20.9	4	1,360.10	1,359.75	0.008537	12.56
P-3	I-3	Outlet	143	36 inch	48.3	2.49	1,358.75	1,358.00	0.005245	17.59

Cheryl's Hollow Storm Water Sewer Line 2

Pipe	Up Node	Dn Node	Length (ft)	Size	Cap (cfs)	V avg (ft/s)	Up Invert (ft)	Dn Invert (ft)	S (ft/ft)	Q (cfs)
P-1	I-1	I-2	117	24 inch	18.71	2.07	1,363.20	1,362.40	0.006838	6.51
P-2	I-2	I-3	41	24 inch	15.8	4.66	1,362.30	1,362.10	0.004878	14.65
P-3	I-3	I-4	269	24 inch	15.11	5.47	1,362.00	1,360.80	0.004461	17.19
P-4	I-4	I-5	123	36 inch	38.03	2.73	1,359.80	1,359.40	0.003252	19.33
P-5	I-5	I-6	162	36 inch	37.05	3.89	1,359.30	1,358.80	0.003086	27.47
P-6	I-6	I-7	48	48 inch	80.29	3.13	1,357.80	1,357.65	0.003125	39.27
P-7	I-7	Outlet	175	48 inch	80.52	3.58	1,357.55	1,357.00	0.003143	44.97

Cheryl's Hollow Storm Water Sewer Line 3

Pipe	Up Node	Dn Node	Length (ft)	Size	Cap (cfs)	V avg (ft/s)	Up Invert (ft)	Dn Invert (ft)	S (ft/ft)	Q (cfs)
P-1	I-1	I-2	41	24 inch	13.68	5.67	1,360.95	1,360.80	0.003659	17.8
P-2	I-2	I-3	117	36 inch	39	4.47	1,359.70	1,359.30	0.003419	31.63
P-3	I-3	I-4	263	48 inch	79.22	2.69	1,358.20	1,357.40	0.003042	33.77
P-4	I-4	Outlet	90	48 inch	82.93	2.88	1,357.30	1,357.00	0.003333	36.21

Cheryl's Hollow Storm Water Sewer Line 4

Pipe	Up Node	Dn Node	Length (ft)	Size	Cap (cfs)	V avg (ft/s)	Up Invert (ft)	Dn Invert (ft)	S (ft/ft)	Q (cfs)
P-6	I-6	I-3	310	24 inch	12.85	1.2	1,361.25	1,360.25	0.003226	3.76
P-1	I-1	I-2	35	24 inch	17.1	0.78	1,361.15	1,360.95	0.005714	2.44
P-2	I-2	I-3	117	24 inch	16.2	1.51	1,360.85	1,360.25	0.005128	4.73
P-3	I-3	I-4	180	36 inch	44.46	2.17	1,359.25	1,358.45	0.004444	15.36
P-4	I-4	I-5	42	36 inch	79.72	1.3	1,358.45	1,358.30	0.003571	18.36
P-5	I-5	Outlet	400	36 inch	73.06	1.96	1,358.20	1,357.00	0.003	27.77

Cheryl's Hollow Storm Water Sewer Line 5

Pipe	Up Node	Dn Node	Length (ft)	Size	Cap (cfs)	V avg (ft/s)	Up Invert (ft)	Dn Invert (ft)	S (ft/ft)	Q (cfs)
P-1	I-1	I-2	62	24 inch	15.74	2.95	1,360.70	1,360.40	0.004839	9.26
P-2	I-2	Outlet	265	36 inch	46.71	1.91	1,359.30	1,358.00	0.004906	13.48

Cheryl's Hollow Storm Water Sewer Line 6

Pipe	Up Node	Dn Node	Length (ft)	Size	Cap (cfs)	V avg (ft/s)	Up Invert (ft)	Dn Invert (ft)	S (ft/ft)	Q (cfs)
P-1	I-1	I-2	47	36 inch	43.51	2.4	1,359.45	1,359.25	0.004255	16.98
P-2	I-2	I-3	130	36 inch	43.38	4.42	1,359.15	1,358.60	0.004231	31.27
P-3	I-3	I-4	170	48 inch	69.67	3.2	1,357.60	1,357.20	0.002353	40.22
P-4	I-4	Outlet	340	48 inch	81.7	3.37	1,357.10	1,356.00	0.003235	42.41

Cheryl's Hollow Storm Water Sewer Line 7

Pipe	Up Node	Dn Node	Length (ft)	Size	Cap (cfs)	V avg (ft/s)	Up Invert (ft)	Dn Invert (ft)	S (ft/ft)	Q (cfs)
P-1	I-1	I-2	177	24 inch	13.17	1.82	1,360.50	1,359.90	0.00339	5.44
P-2	I-2	I-3	265	36 inch	36.64	1.22	1,358.80	1,358.00	0.003019	8.59
P-3	I-3	I-4	41	48 inch	86.88	1.72	1,357.00	1,356.85	0.003659	21.61
P-4	I-4	I-5	137	48 inch	82.32	2.11	1,356.75	1,356.30	0.003285	26.54
P-6	I-5	Outlet	50	48 inch	90.84	2.11	1,356.20	1,356.00	0.004	26.54

Cheryl's Hollow Storm Water Sewer Line 8

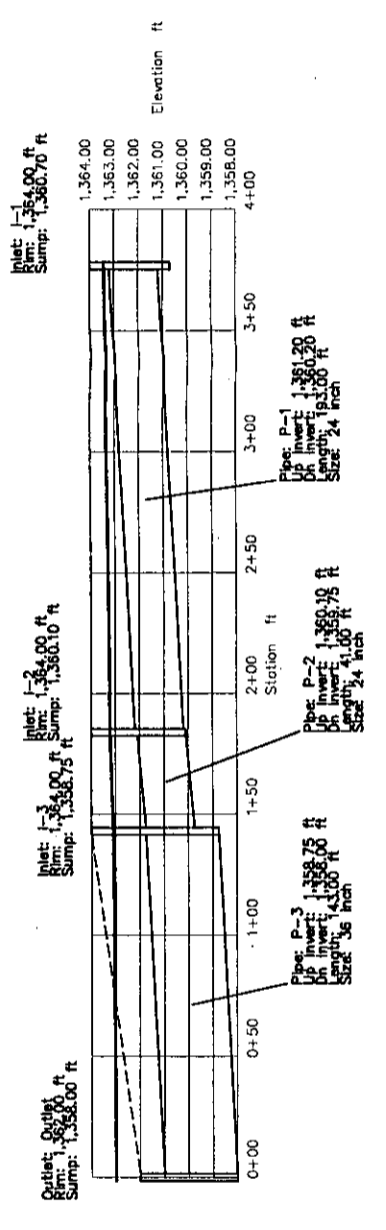
Pipe	Up Node	Dn Node	Length (ft)	Size	Cap (cfs)	V avg (ft/s)	Up Invert (ft)	Dn Invert (ft)	S (ft/ft)	Q (cfs)
P-1	I-1	Outlet	150	24 inch	16	1.78	1,360.25	1,359.50	0.005	5.59



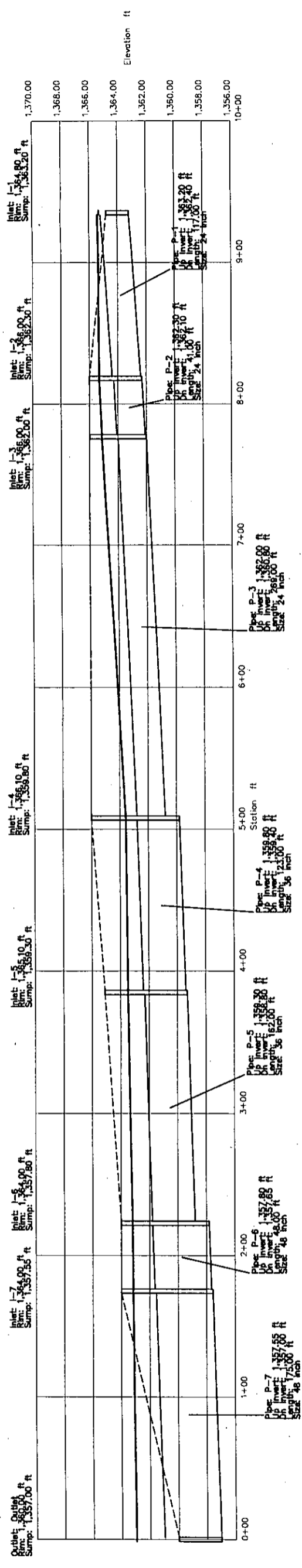
Ruggles & Bohm P.A.

Engineering, Surveying, Land Planning

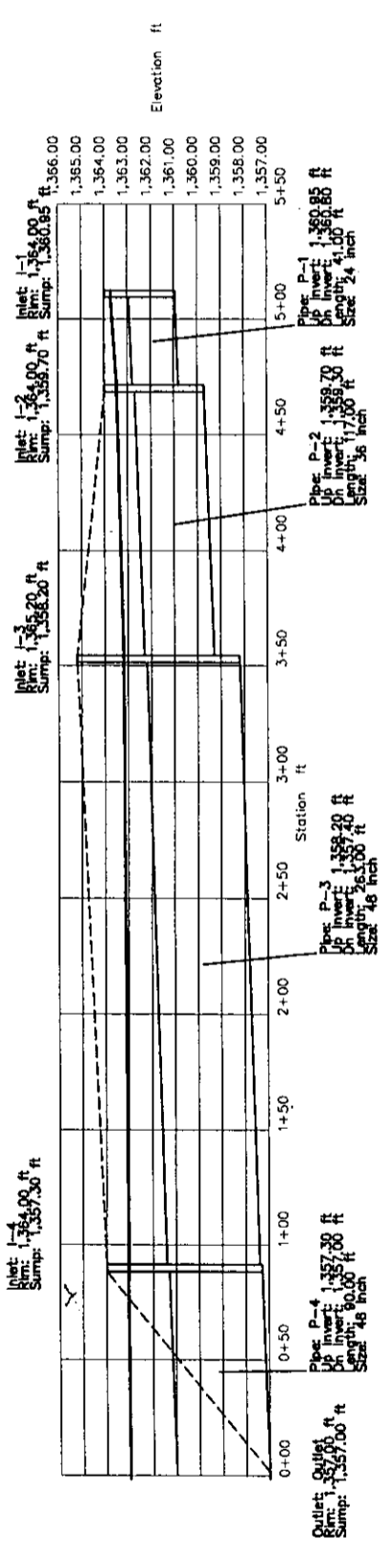
LINE 1 PROFILE



LINE 2 PROFILE



LINE 3 PROFILE

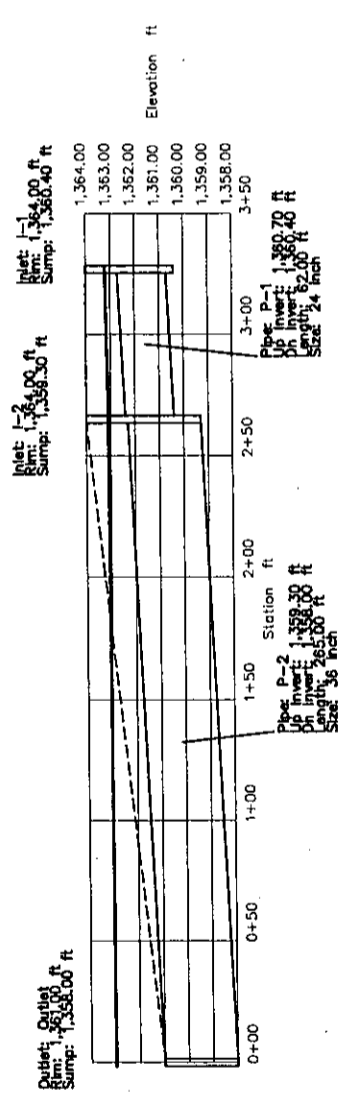
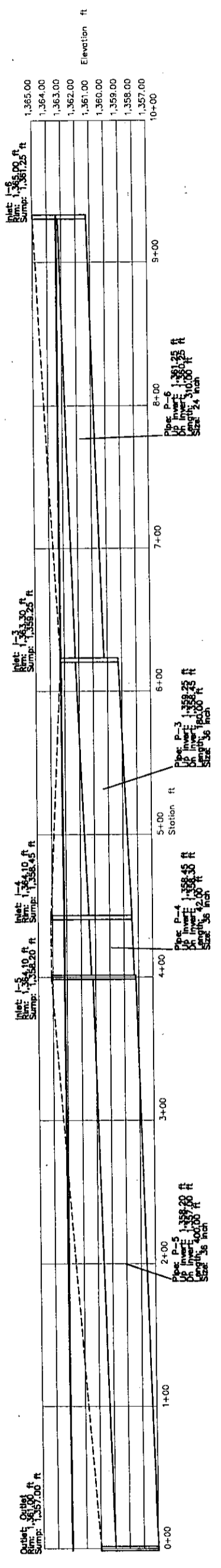
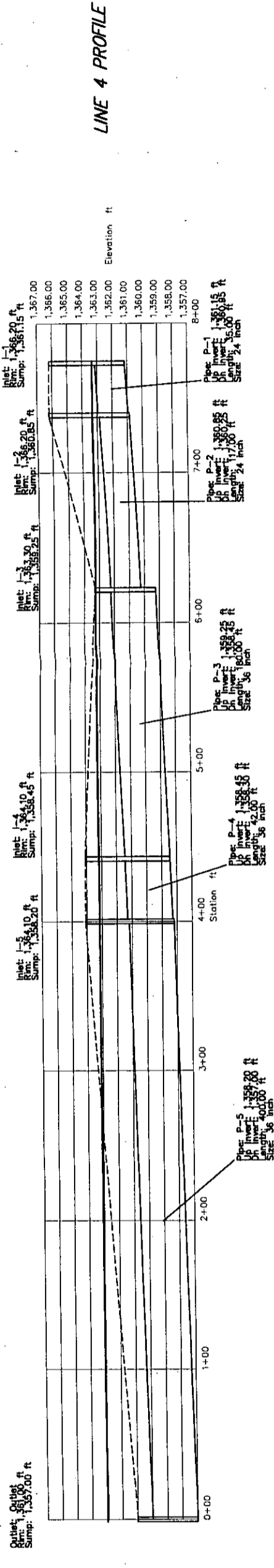


CHERYL'S HOLLOW ADDITION
SWS PROFILES



Ruggles & Bohm, P.A.
Engineering, Surveying, Land Planning
824 North Main
Wichita, Kansas 67203
www.rba.com
E-mail: info@rba.com

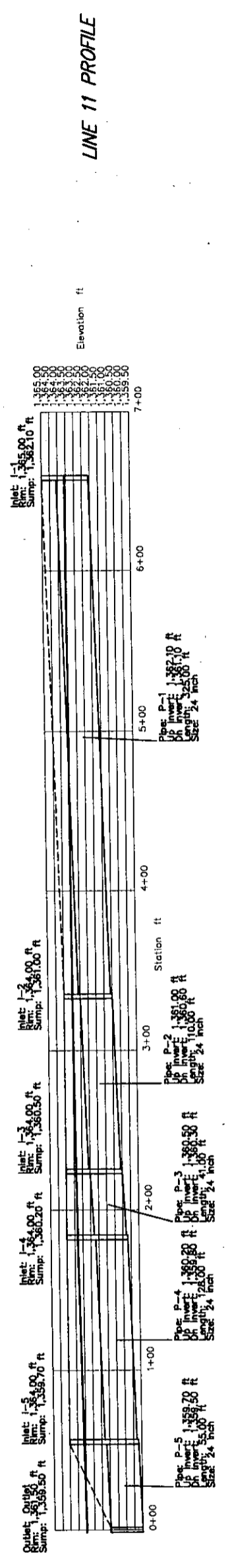
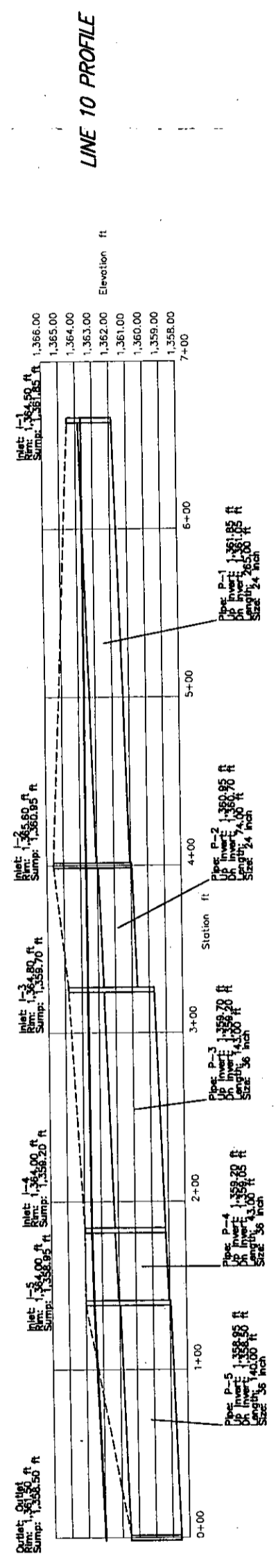
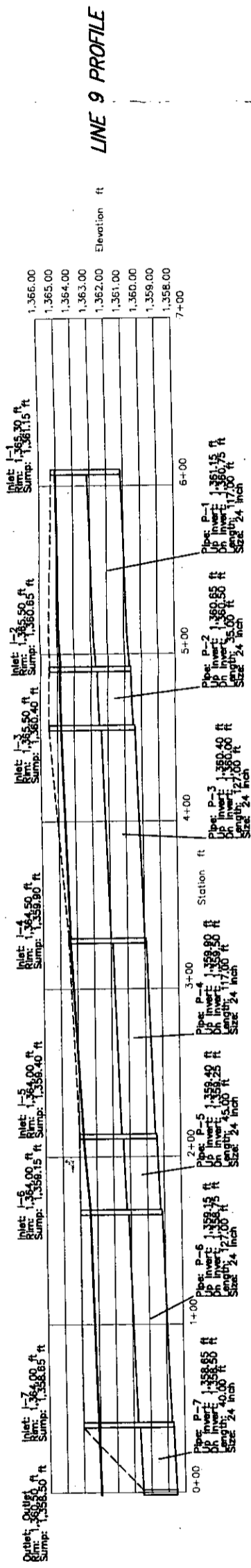
DATE: DEC 18, 2004
PROJECT NUMBER: 0180 264-8028
REVISION: 0180 264-8027, fax
UTILITY



**CHERYL'S HOLLOW ADDITION
SWS PROFILES**

Rugles & Bohm, P.A.
Engineering, Surveying, Land Planning
924 North Main
Wichita, Kansas 67203
www.rugles.com
E-mail: info@rugles.com

DATE: Oct. 15, 2004
PROJECT NUMBER: Cheryl's Hollow SWS Profiles



**CHERYL'S HOLLOW ADDITION
SWS PROFILES**

Ruggles & Bohm, P.A.
Engineering, Surveying, Land Planning
824 North Main
Worcester, MA 01233
www.rugglesandbohm.com
Tel: 978-264-8828
Fax: 978-264-8823
Email: info@rugglesandbohm.com

DATE: **Oct. 19, 2004**
PROJECT NUMBER: _____
DRAWN BY: _____
CHECKED BY: _____
REVIEWED BY: _____
UTILITY: _____

Ruggles & Bohm P.A.

Engineering, Surveying, Land Planning

HEC-1 INPUT

```

LINE          ID.....1.....2.....3.....4.....5.....6.....7.....8.....9.....10
*** FREE ***
1             ID      SOUTH BASIN PRE-DEVELOPED, RICK THOMPSON SITE, 135TH AND 13TH
2             ID      24-HOUR STORM W/15 MINUTE DISTRIBUTION AND SCS UNIT HYDROGRAPH AND LAG METHO
3             ID      NATURAL DRAINAGE AREA TO POND SITE IS 47 ACRES IN SIZE
4             IT       5
5             IN       30
6             IO       4
7             KK      UNDEV
8             PB       7.8
9             PC       0
10            PC       62
11            PC       94
12            BA      0.0734
13            UD       0.48
14            LS       0
15            KK      SDEV
16            BA      0.0831
17            UD       0.30
18            LS       0
19            KK      POND
20            RS       1
21            SA       1.9
22            SE      1359
23            SQ       .1
24            SE      1359
25            KK      EBASIN
26            BA      0.0227
27            UD       0.20
28            LS       0
29            KK      PONDE
30            RS       1
31            SA       0.80
32            SE      1358
33            SQ       .1
34            SE      1358
35            KK      NBASIN
36            BA      0.0448
37            UD       0.48
38            LS       0
39            KK      NBASDEV
40            BA      0.0377
41            UD       0.20
42            LS       0

          2      4      6      9      12      15      19      27      46
          68     72     76     79     82     85     87     90     92
          96     98     99    100
          81
          90
          ELEV 1359.0
          2.2
          1364
          4.0    11.4    20.9    32.2    45.0    59.2    74.6    91.2    108.8
          1359.5  1360  1360.5  1361  1361.5  1362  1362.5  1363  1363.5
          1
          ELEV 1358
          1.04
          1363
          1      4      9      13      16      22      24      29
          1358.5  1359  1359.5  1360  1360.5  1361  1361.5  1362
          81
          94
    
```



```

*****
*
* FLOOD HYDROGRAPH PACKAGE (HEC-1)
* ENGINEERS
*
* MAY 1991
*
* CENTER
*
* VERSION 4.0.1E
*
* 95616
* RUN DATE 10/21/2004 TIME 10:58:45
*
*****

```

```

*
* U.S. ARMY CORPS OF
*
* HYDROLOGIC ENGINEERING
*
* 609 SECOND STREET
*
* DAVIS, CALIFORNIA
*
* (916) 756-1104
*

```

SOUTH BASIN PRE-DEVELOPED, RICK THOMPSON SITE, 135TH AND 13TH
 24-HOUR STORM W/15 MINUTE DISTRIBUTION AND SCS UNIT HYDROGRAPH AND LAG METHO
 NATURAL DRAINAGE AREA TO POND SITE IS 47 ACRES IN. SIZE

```

6 IO      OUTPUT CONTROL VARIABLES
          IPRNT      4  PRINT CONTROL
          IPLOT      0  PLOT CONTROL
          QSCAL      0.  HYDROGRAPH PLOT SCALE

IT        HYDROGRAPH TIME DATA
          NMIN      5  MINUTES IN COMPUTATION INTERVAL
          IDATE     1  0  STARTING DATE
          ITIME     0000 STARTING TIME
          NQ        289 NUMBER OF HYDROGRAPH ORDINATES
          NDDATE    2  0  ENDING DATE
          NDTIME    0000 ENDING TIME
          ICENT     19  CENTURY MARK

          COMPUTATION INTERVAL 0.08 HOURS
          TOTAL TIME BASE     24.00 HOURS

```

```

ENGLISH UNITS
DRAINAGE AREA      SQUARE MILES
PRECIPITATION DEPTH INCHES
LENGTH, ELEVATION FEET
FLOW               CUBIC FEET PER SECOND
STORAGE VOLUME    ACRE-FEET
SURFACE AREA      ACRES
TEMPERATURE        DEGREES FAHRENHEIT

```

```

*****
*
* 7 KK      UNDEV
*
*****

```

```

5 IN      TIME DATA FOR INPUT TIME SERIES
          JXMIN     30  TIME INTERVAL IN MINUTES
          JXDATE    1  0  STARTING DATE
          JXTIME    0  STARTING TIME

```

```

12 BA     SUBBASIN RUNOFF DATA
          SUBBASIN CHARACTERISTICS
          TAREA     0.07  SUBBASIN AREA

```

```

8 PB     PRECIPITATION DATA
          STORM     7.80  BASIN TOTAL PRECIPITATION

```

```

9 PI     INCREMENTAL PRECIPITATION PATTERN
          0.33      0.33      0.33      0.33      0.33      0.33      0.33      0.33      0.33      0.33
          0.33      0.33      0.33      0.33      0.33      0.33      0.33      0.33      0.33      0.50
          0.50      0.50      0.50      0.50      0.50      0.50      0.50      0.50      0.50      0.50
          0.50      0.50      0.50      0.50      0.50      0.50      0.50      0.50      0.50      0.50
          0.67      0.67      1.33      1.33      1.33      1.33      1.33      1.33      1.33      1.33
          3.17      3.17      3.17      3.17      2.67      2.67      2.67      2.67      2.67      2.67
          1.00      1.00      1.00      1.00      1.00      1.00      1.00      1.00      1.00      1.00
          0.67      0.67      0.67      0.67      0.67      0.67      0.67      0.67      0.67      0.50
          0.50      0.50      0.50      0.50      0.50      0.50      0.50      0.50      0.50      0.50
          0.50      0.50      0.50      0.50      0.50      0.50      0.33      0.33      0.33      0.33
          0.33      0.33      0.33      0.33      0.33      0.33      0.33      0.33      0.33      0.33
          0.33      0.33      0.33      0.33      0.33      0.33      0.33      0.33      0.33      0.33
          0.33      0.33      0.17      0.17      0.17      0.17      0.17      0.17      0.17      0.17
          0.17      0.17      0.17      0.17

```

```

14 LS     SCS LOSS RATE
          STRTL     0.47  INITIAL ABSTRACTION

```

CRVNR 81.00 CURVE NUMBER
 RTIMP 0.00 PERCENT IMPERVIOUS AREA
 13 UD SCS DIMENSIONLESS UNITGRAPH
 TLAG 0.48 LAG

UNIT HYDROGRAPH
 31 END-OF-PERIOD ORDINATES

5.	15.	30.	49.	63.	68.	67.	60.	50.	38.
29.	22.	17.	13.	10.	8.	6.	5.	4.	3.
2.	2.	1.	1.	1.	1.	0.	0.	0.	0.
0.									

15 KK SDEV

SUBBASIN RUNOFF DATA

16 BA SUBBASIN CHARACTERISTICS
 TAREA 0.08 SUBBASIN AREA

PRECIPITATION DATA

8 PB STORM 7.80 BASIN TOTAL PRECIPITATION

9 PI INCREMENTAL PRECIPITATION PATTERN

0.33	0.33	0.33	0.33	0.33	0.33	0.33	0.33	0.33	0.33	0.33	0.33
0.33	0.33	0.33	0.33	0.33	0.33	0.33	0.33	0.33	0.33	0.50	0.50
0.50	0.50	0.50	0.50	0.50	0.50	0.50	0.50	0.50	0.50	0.50	0.50
0.50	0.50	0.50	0.50	0.50	0.50	0.50	0.67	0.67	0.67	0.67	0.67
0.67	0.67	1.33	1.33	1.33	1.33	1.33	1.33	1.33	1.33	3.17	3.17
3.17	3.17	3.17	3.17	3.17	2.67	2.67	2.67	2.67	2.67	2.67	2.67
1.00	1.00	1.00	1.00	1.00	1.00	1.00	0.67	0.67	0.67	0.67	0.67
0.67	0.67	0.67	0.67	0.67	0.67	0.67	0.67	0.67	0.67	0.50	0.50
0.50	0.50	0.50	0.50	0.50	0.50	0.50	0.50	0.50	0.50	0.50	0.50
0.50	0.50	0.50	0.50	0.50	0.50	0.50	0.33	0.33	0.33	0.33	0.33
0.33	0.33	0.50	0.50	0.50	0.50	0.50	0.50	0.50	0.50	0.33	0.33
0.33	0.33	0.33	0.33	0.33	0.33	0.33	0.33	0.33	0.33	0.33	0.33
0.33	0.33	0.33	0.33	0.33	0.33	0.33	0.33	0.33	0.33	0.33	0.33
0.33	0.33	0.17	0.17	0.17	0.17	0.17	0.17	0.17	0.17	0.17	0.17
0.17	0.17	0.17	0.17	0.17							

18 LS SCS LOSS RATE
 STRTL 0.22 INITIAL ABSTRACTION
 CRVNR 90.00 CURVE NUMBER
 RTIMP 0.00 PERCENT IMPERVIOUS AREA

17 UD SCS DIMENSIONLESS UNITGRAPH
 TLAG 0.30 LAG

UNIT HYDROGRAPH
 20 END-OF-PERIOD ORDINATES

16.	53.	101.	117.	108.	84.	54.	36.	25.	16.
11.	7.	5.	3.	2.	2.	1.	1.	0.	0.

19 KK POND

HYDROGRAPH ROUTING DATA

20 RS STORAGE ROUTING
 NSTPS 1 NUMBER OF SUBREACHES
 ITYP ELEV TYPE OF INITIAL CONDITION
 RSVRIC 1359.00 INITIAL CONDITION
 X 0.00 WORKING R AND D COEFFICIENT

21 SA AREA 1.9 2.2

22 SE ELEVATION 1359.00 1364.00

23 SQ DISCHARGE 0. 4. 11. 21. 32. 45. 59. 75. 91.
 109.

24 SE ELEVATION 1359.00 1359.50 1360.00 1360.50 1361.00 1361.50 1362.00 1362.50 1363.00
 1363.50

COMPUTED STORAGE-ELEVATION DATA

STORAGE 0.00 10.24
ELEVATION 1359.00 1364.00

COMPUTED STORAGE-OUTFLOW-ELEVATION DATA

STORAGE 0.00 0.96 1.93 2.92 3.92 4.93 5.96 7.01 8.07 9.15
OUTFLOW 0.10 4.00 11.40 20.90 32.20 45.00 59.20 74.60 91.20 108.80
ELEVATION 1359.00 1359.50 1360.00 1360.50 1361.00 1361.50 1362.00 1362.50 1363.00 1363.50

STORAGE 10.24
OUTFLOW 126.40
ELEVATION 1364.00

25 KK

EBASIN

SUBBASIN RUNOFF DATA

26 BA

SUBBASIN CHARACTERISTICS
TAREA 0.02 SUBBASIN AREA

PRECIPITATION DATA

8 PB

STORM 7.80 BASIN TOTAL PRECIPITATION

9 PI

INCREMENTAL PRECIPITATION PATTERN

0.33	0.33	0.33	0.33	0.33	0.33	0.33	0.33	0.33	0.33	0.33
0.33	0.33	0.33	0.33	0.33	0.33	0.33	0.33	0.33	0.50	0.50
0.50	0.50	0.50	0.50	0.50	0.50	0.50	0.50	0.50	0.50	0.50
0.50	0.50	0.50	0.50	0.50	0.50	0.50	0.67	0.67	0.67	0.67
0.67	0.67	1.33	1.33	1.33	1.33	1.33	1.33	1.33	3.17	3.17
3.17	3.17	3.17	3.17	2.67	2.67	2.67	2.67	2.67	2.67	2.67
1.00	1.00	1.00	1.00	1.00	1.00	1.00	0.67	0.67	0.67	0.67
0.67	0.67	0.67	0.67	0.67	0.67	0.67	0.67	0.67	0.50	0.50
0.50	0.50	0.50	0.50	0.50	0.50	0.50	0.50	0.50	0.50	0.50
0.50	0.50	0.50	0.50	0.50	0.50	0.50	0.33	0.33	0.33	0.33
0.33	0.33	0.33	0.33	0.33	0.33	0.33	0.33	0.33	0.33	0.33
0.33	0.33	0.33	0.33	0.33	0.33	0.33	0.33	0.33	0.33	0.33
0.33	0.33	0.17	0.17	0.17	0.17	0.17	0.17	0.17	0.17	0.17

28 LS

SCS LOSS RATE
STRTL 0.13 INITIAL ABSTRACTION
CRVNER 94.00 CURVE NUMBER
RTIMP 0.00 PERCENT IMPERVIOUS AREA

27 UD

SCS DIMENSIONLESS UNITGRAPH
TLAG 0.20 LAG

UNIT HYDROGRAPH
14 END-OF-PERIOD ORDINATES

11.	36.	45.	36.	20.	12.	7.	4.	2.	1.
1.	0.	0.	0.						

29 KK

PONDE

HYDROGRAPH ROUTING DATA

30 RS

STORAGE ROUTING
NSTPS 1 NUMBER OF SUBREACHES
ITYP ELEV TYPE OF INITIAL CONDITION
RSVRIC 1358.00 INITIAL CONDITION
X 0.00 WORKING R AND D COEFFICIENT

31 SA

AREA 0.8 1.0

32 SE

ELEVATION 1358.00 1363.00

33 SQ

DISCHARGE 0. 1. 4. 9. 13. 16. 22. 24. 29.

34 SE

ELEVATION 1358.00 1358.50 1359.00 1359.50 1360.00 1360.50 1361.00 1361.50 1362.00

COMPUTED STORAGE-ELEVATION DATA

	0.17	0.17	0.17	0.17
42 LS	SCS LOSS RATE			
	STRFL	0.13	INITIAL ABSTRACTION	
	CRVNBR	94.00	CURVE NUMBER	
	RTIMP	0.00	PERCENT IMPERVIOUS AREA	

41 UD	SCS DIMENSIONLESS UNITGRAPH			
	TLAG	0.20	LAG	

					UNIT HYDROGRAPH					
					14 END-OF-PERIOD ORDINATES					
	18.	61.	75.	60.	33.	19.	11.	6.	4.	2.
	1.	1.	0.	0.						

```

*****
*          *
*   PONDN   *
*          *
*****

```

HYDROGRAPH ROUTING DATA

44 RS	STORAGE ROUTING								
	NSTPS	1	NUMBER OF SUBREACHES						
	ITYP	ELEV	TYPE OF INITIAL CONDITION						
	RSVRIC	1360.50	INITIAL CONDITION						
	X	0.00	WORKING R AND D COEFFICIENT						
45 SA	AREA	1.5	2.1						
46 SE	ELEVATION	1360.50	1364.00						
47 SQ	DISCHARGE	0.	5.	14.	25.	38.	53.	70.	88.
48 SE	ELEVATION	1360.50	1361.00	1361.50	1362.00	1362.50	1363.00	1363.50	1364.00

COMPUTED STORAGE-ELEVATION DATA

STORAGE	0.00	6.27
ELEVATION	1360.50	1364.00

COMPUTED STORAGE-OUTFLOW-ELEVATION DATA

STORAGE	0.00	0.77	1.58	2.43	3.33	4.26	5.24	6.27
OUTFLOW	0.10	4.80	13.50	24.80	38.00	53.40	70.00	88.00
ELEVATION	1360.50	1361.00	1361.50	1362.00	1362.50	1363.00	1363.50	1364.00

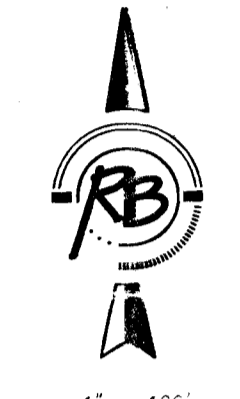
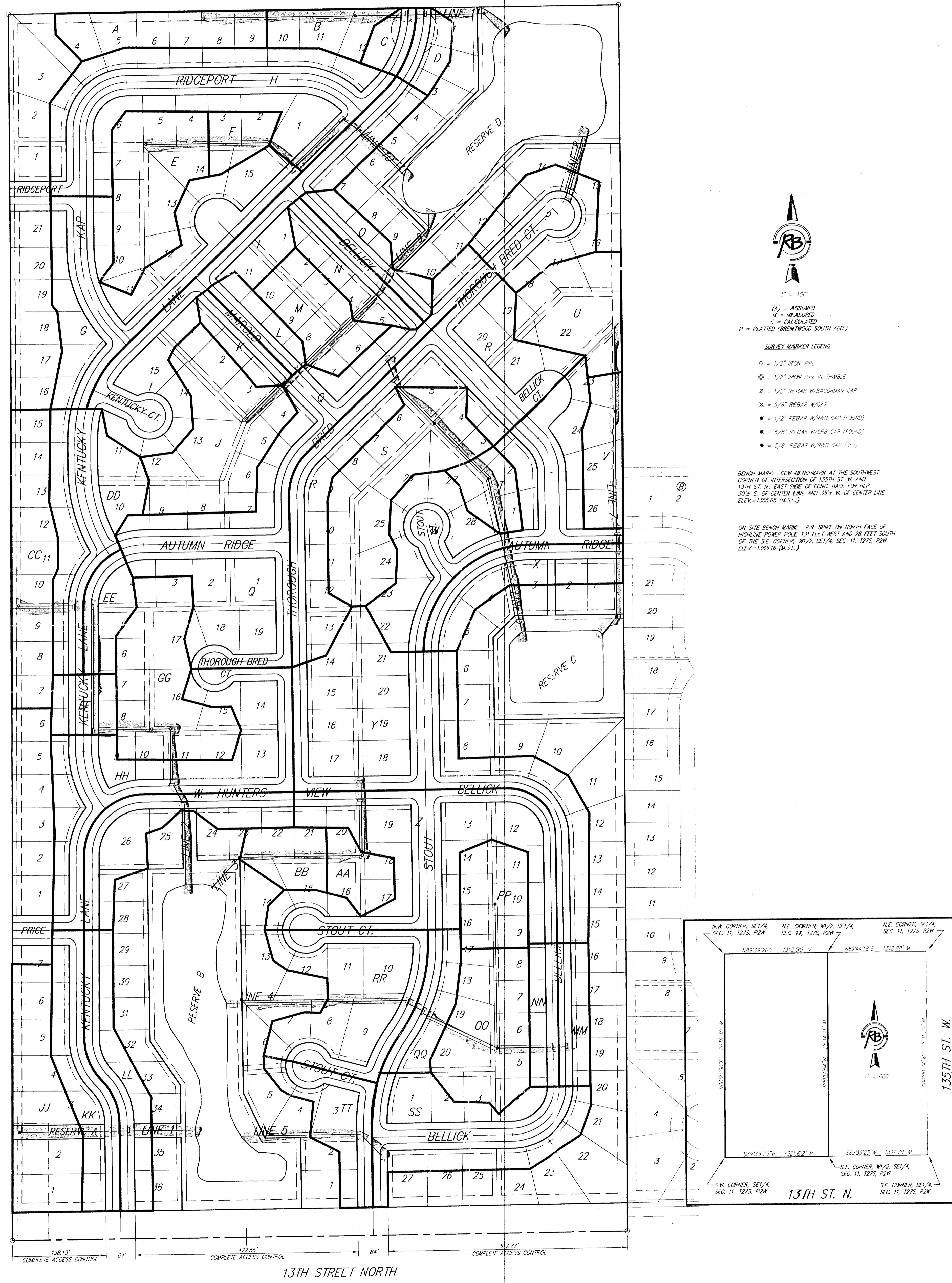
RUNOFF SUMMARY
 FLOW IN CUBIC FEET PER SECOND
 TIME IN HOURS, AREA IN SQUARE MILES

OF STAGE	OPERATION	STATION	PEAK FLOW	TIME OF PEAK	AVERAGE FLOW FOR MAXIMUM PERIOD			BASIN AREA	MAXIMUM STAGE	TIME MAX
					6-HOUR	24-HOUR	72-HOUR			
	HYDROGRAPH AT	UNDEV	95.	5.08	37.	11.	11.	0.07		
	HYDROGRAPH AT	SDEV	134.	4.75	48.	15.	15.	0.08		
	ROUTED TO	POND	94.	5.33	46.	15.	15.	0.08		
5.33									1363.07	
	HYDROGRAPH AT	EBASIN	40.	4.58	14.	4.	4.	0.02		
	ROUTED TO	PONDE	23.	5.25	13.	4.	4.	0.02		
5.25									1361.24	
	HYDROGRAPH AT	NBASIN	58.	5.08	22.	7.	7.	0.04		
	HYDROGRAPH AT	NBASDEV	67.	4.58	23.	7.	7.	0.04		
	ROUTED TO	PONDN	47.	5.17	22.	7.	7.	0.04		
5.17									1362.79	

*** NORMAL END OF HEC-1 ***

CHERYL'S HOLLOW

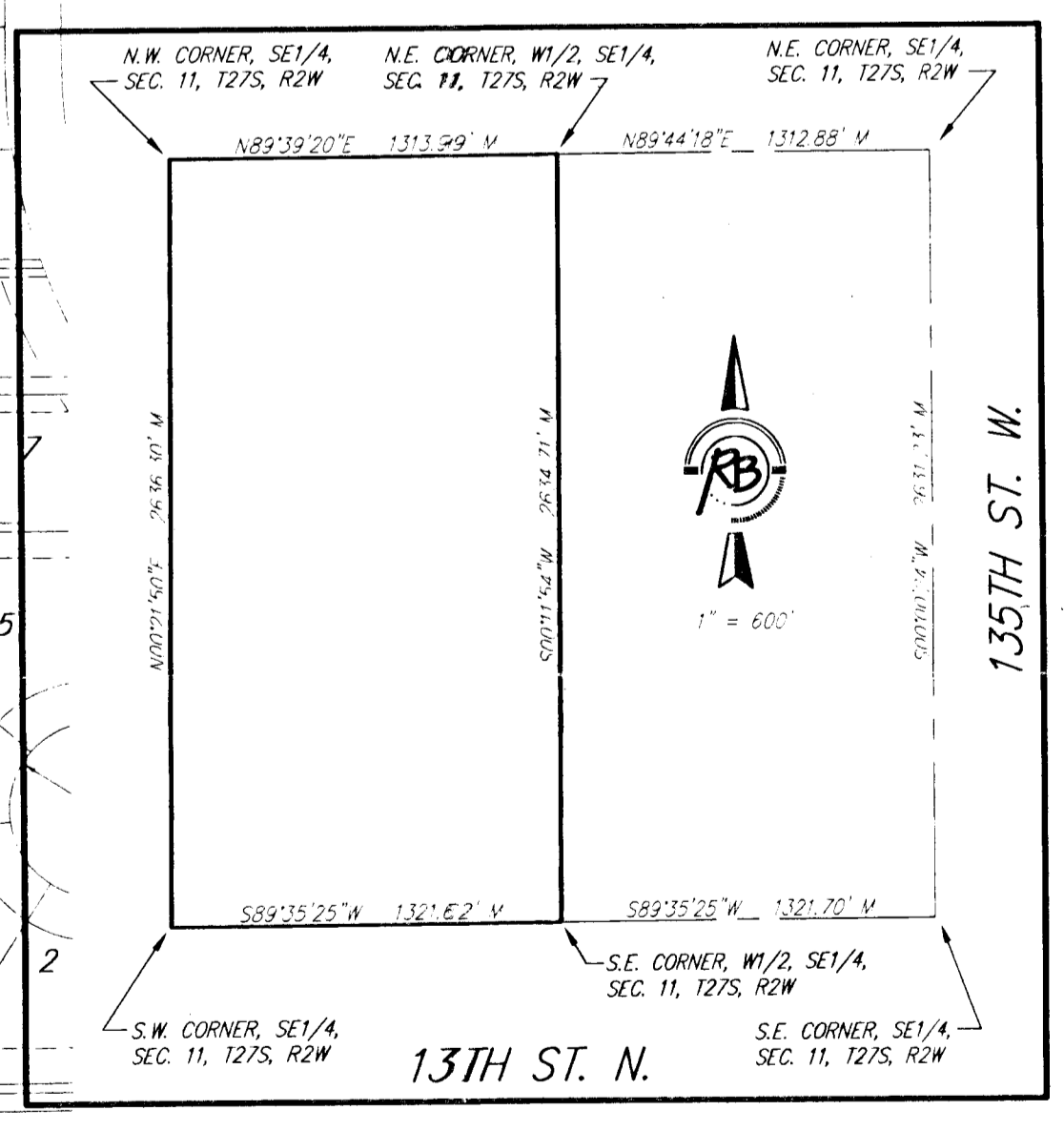
Wichita, Sedgwick County, Kansas



- 1" = 100'
- (A) = ASSUMED
 M = MEASURED
 C = CALCULATED
 P = PLATTED (BIRNWOOD SOUTH ADD.)
- SURVEY MARKER LEGEND**
- = 1/2" IRON PIPE
 - ⊙ = 1/2" IRON PIPE IN TRIMBLE
 - ⊘ = 1/2" REBAR W/BAUGHMAN CAP
 - ⊞ = 5/8" REBAR W/CAP
 - = 1/2" REBAR W/BB CAP (FOUND)
 - = 5/8" REBAR W/SPB CAP (FOUND)
 - = 5/8" REBAR W/BB CAP (SET)

BENCHMARK: CON BENCHMARK AT THE SOUTHWEST CORNER OF INTERSECTION OF 135TH ST. W. AND 127TH ST. N. EAST SIDE OF ROAD. BASE FOR R/LP 307.4 S. OF CENTER LINE AND 35.4 W. OF CENTER LINE ELEV=1555.55 (W.S.L.)

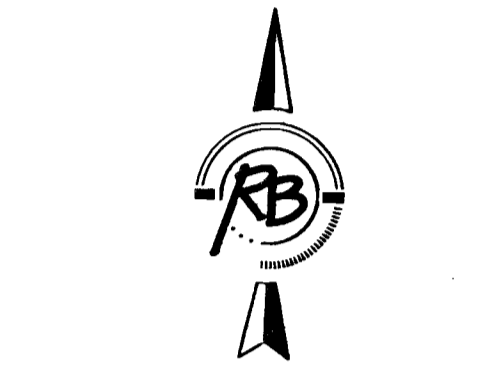
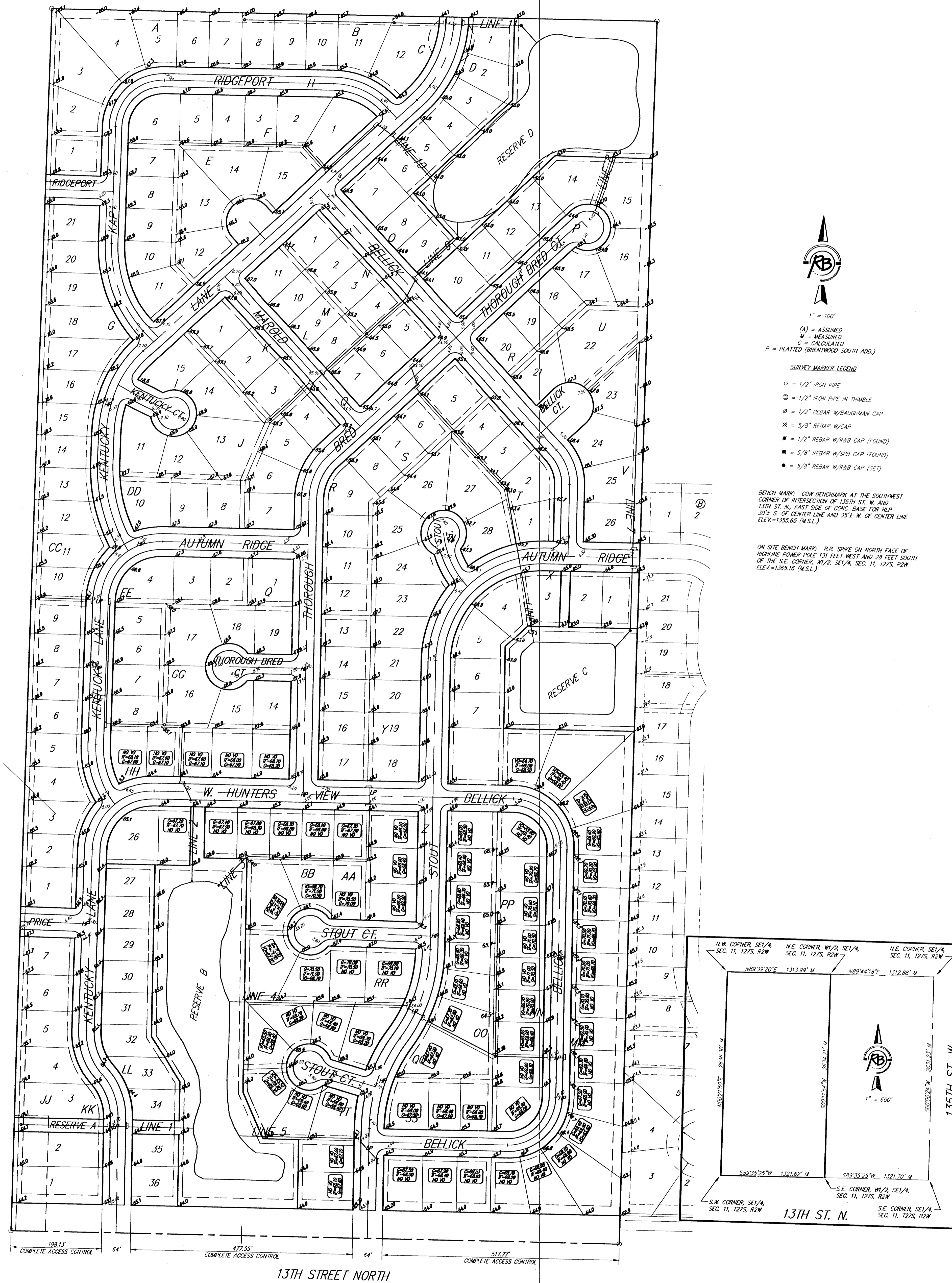
ON SITE BENCH MARK: 1/2" SPIKE ON NORTH FACE OF HOUSING POWER POLE 131 FEET WEST AND 38 FEET SOUTH OF THE S.E. CORNER, W/2, SE1/4, SEC. 11, T27S, R2W ELEV=1555.16 (W.S.L.)



131ST STREET NORTH

CHERYL'S HOLLOW

Wichita, Sedgwick County, Kansas



- 1" = 100'
- (A) = ASSUMED
 M = MEASURED
 C = CALCULATED
 P = PLATTED (GREENWOOD SOUTH ADD.)
- SURVEY MARKER LEGEND**
- = 1/2" IRON PIPE
 - ⊙ = 1/2" IRON PIPE IN THIMBLE
 - ⊠ = 1/2" REBAR W/BAUGHMAN CAP
 - ⊞ = 1/2" REBAR W/CAP
 - = 1/2" REBAR W/PAB CAP (FOUND)
 - = 5/8" REBAR W/PAB CAP (FOUND)
 - = 5/8" REBAR W/PAB CAP (SET)

BENCHMARK: COB BENCHMARK AT THE SOUTHWEST CORNER OF INTERSECTION OF 135TH ST. W. AND 13TH ST. N., EAST SIDE OF CONC. BASE FOR NEP 30.4 S. OF CENTER LINE AND 32.4 W. OF CENTER LINE ELEV=1356.63 (M.S.L.)

ON SITE BENCH MARK: IRB SPIKE ON NORTH FACE OF HIGHLINE POWER POLE 121 FEET WEST AND 28 FEET SOUTH OF THE S.E. CORNER, W/2 SE1/4, SEC. 11, 127S, R2W ELEV=1365.16 (M.S.L.)

