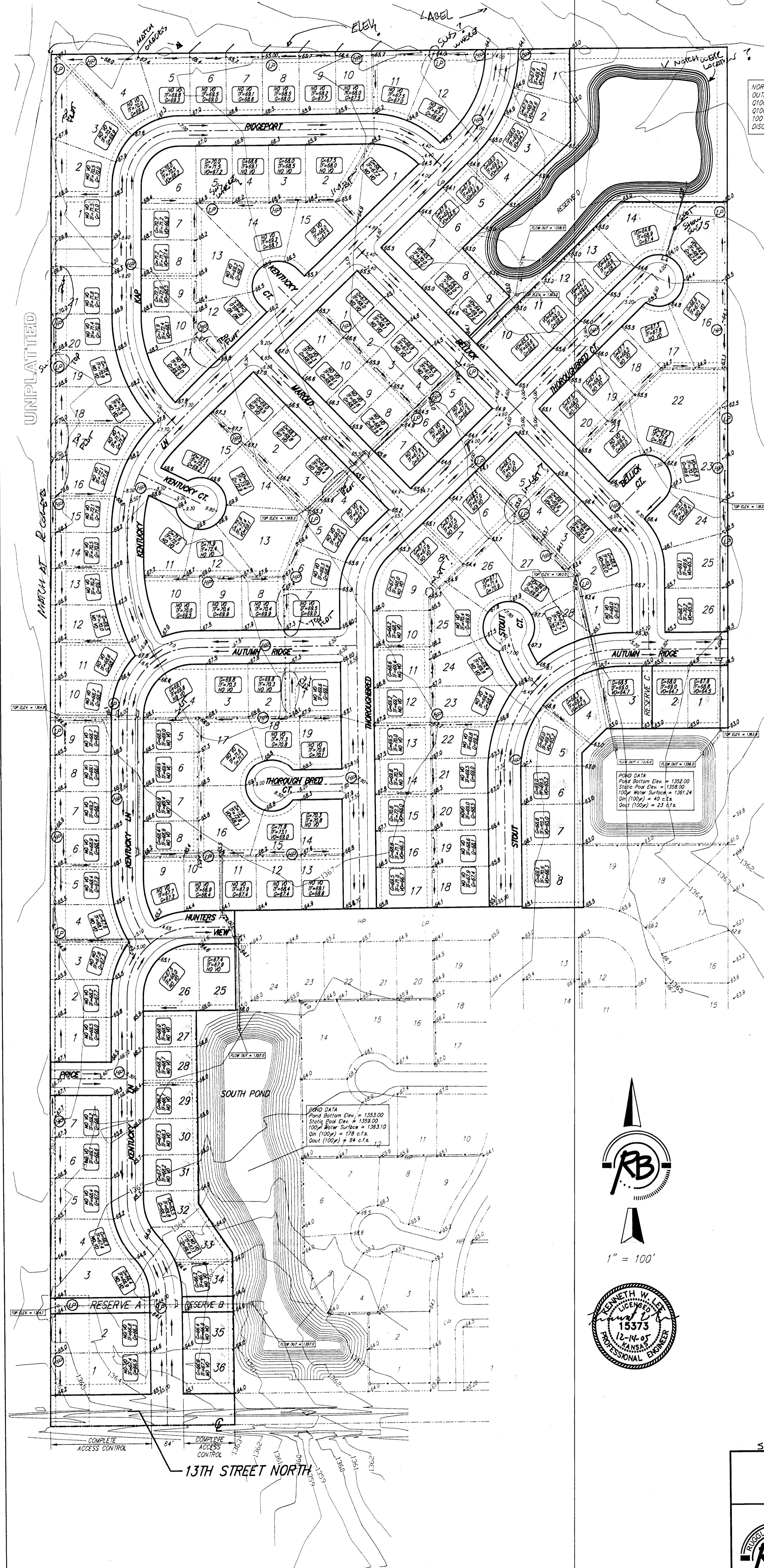
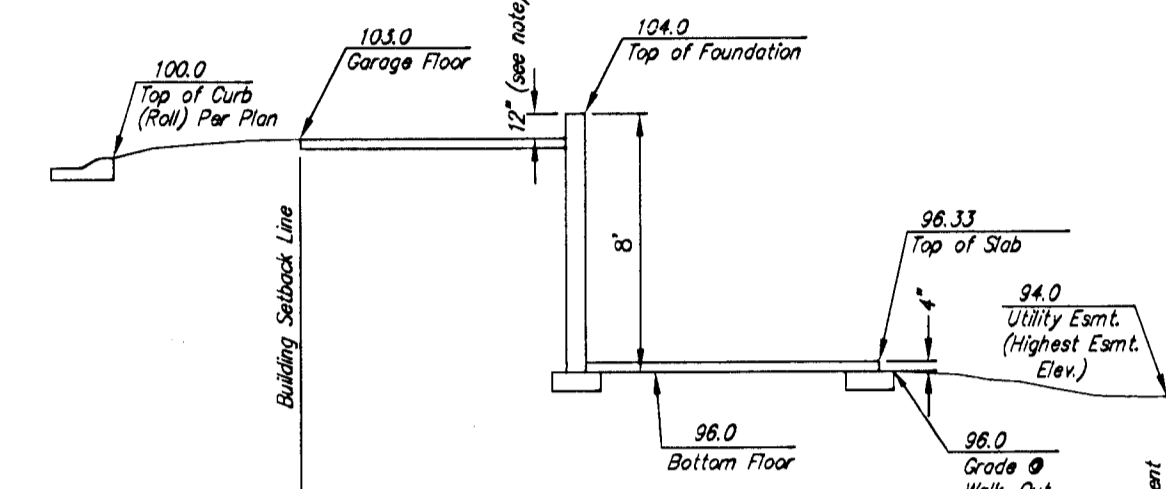


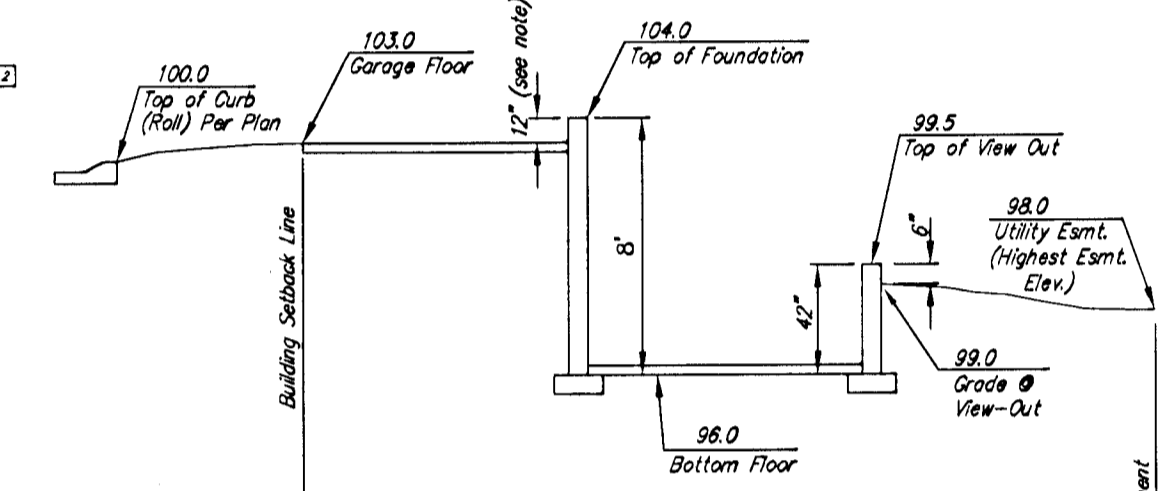
Subdivision Grading Plan
CHERYL'S HOLLOW
 Wichita, Sedgwick County, Kansas



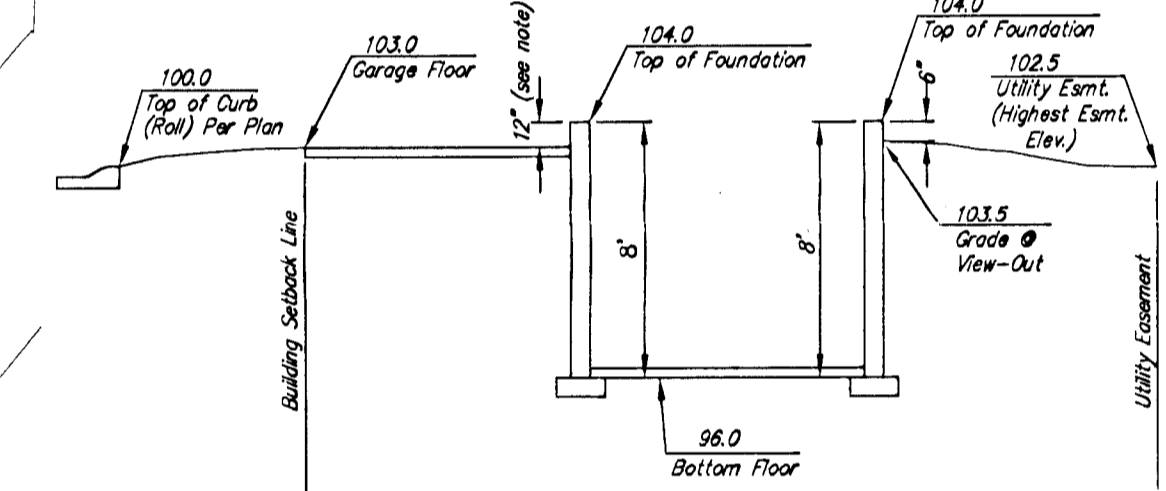
NORTH POND:
 OUTLET STRUCTURE: 4.5' NOTCHED WEIR
 5100 INFLOW (DEVELOPED) = 87 CFS
 5100 OUTFLOW FROM POND = 44 CFS
 100 YEAR WATER SURFACE = 1362.79
 DISCHARGE TO SNAKE FLOWING NORTH



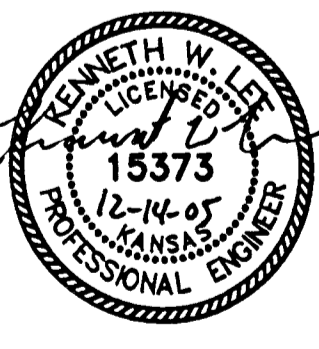
Section Through Typical Walk-Out Lot



Section Through Typical View-Out Lot



Section Through Typical Full Basement



- LEGEND**
- XXX Proposed Corner Grade
 - G=63.5 Proposed Viewout Elevation
 - TF=70.0 Proposed Garage Floor
 - VO=65.7 Proposed Top of Foundation

BENCH MARK: COW BENCHMARK AT THE SOUTHWEST CORNER OF INTERSECTION OF 1315TH ST. W. AND 13TH ST. N., EAST SIDE OF CONC. BASE FOR HLP 30"± S. OF CENTER LINE AND 35"± W. OF CENTER LINE ELEV.=1355.65 (M.S.L.) NGVD

ON SITE BENCH MARK: R.R. SPIKE ON NORTH FACE OF HIGHLINE POWER POLE 131 FEET WEST AND 28 FEET SOUTH OF THE S.E. CORNER, W/2, SE1/4, SEC. 11, T27S, R21W ELEV.=1365.16 (M.S.L.) NGVD

NOTES: THE VO OPENINGS INDICATED ON THIS PLAN ARE THE LOWEST RECOMMENDED OPENING FOR THE LOTS. A STAMPED SITE PLAN SHOULD BE PREPARED IF LOWER GRADES ARE PROPOSED.

Submitted 12-14-05

**CHERYL'S HOLLOW 2nd ADDITION
 GRADING PLAN
 WICHITA, KANSAS**

<p>Rugles & Bohm, P.A. Engineering, Surveying, Land Planning 924 North Main (318) 264-8008 Wichita, Kansas 67202(318) 264-4821 fax www.rbkans.com E-mail: info@rbkans.com</p>	DESIGN KWL/RLS	SHEET 1 OF 1
	DRAWN RLS	
DRAFTING FILE Phase 2 Grading Plan	PROJECT NUMBER Proj. No.	DATE Dec. 14, 2005