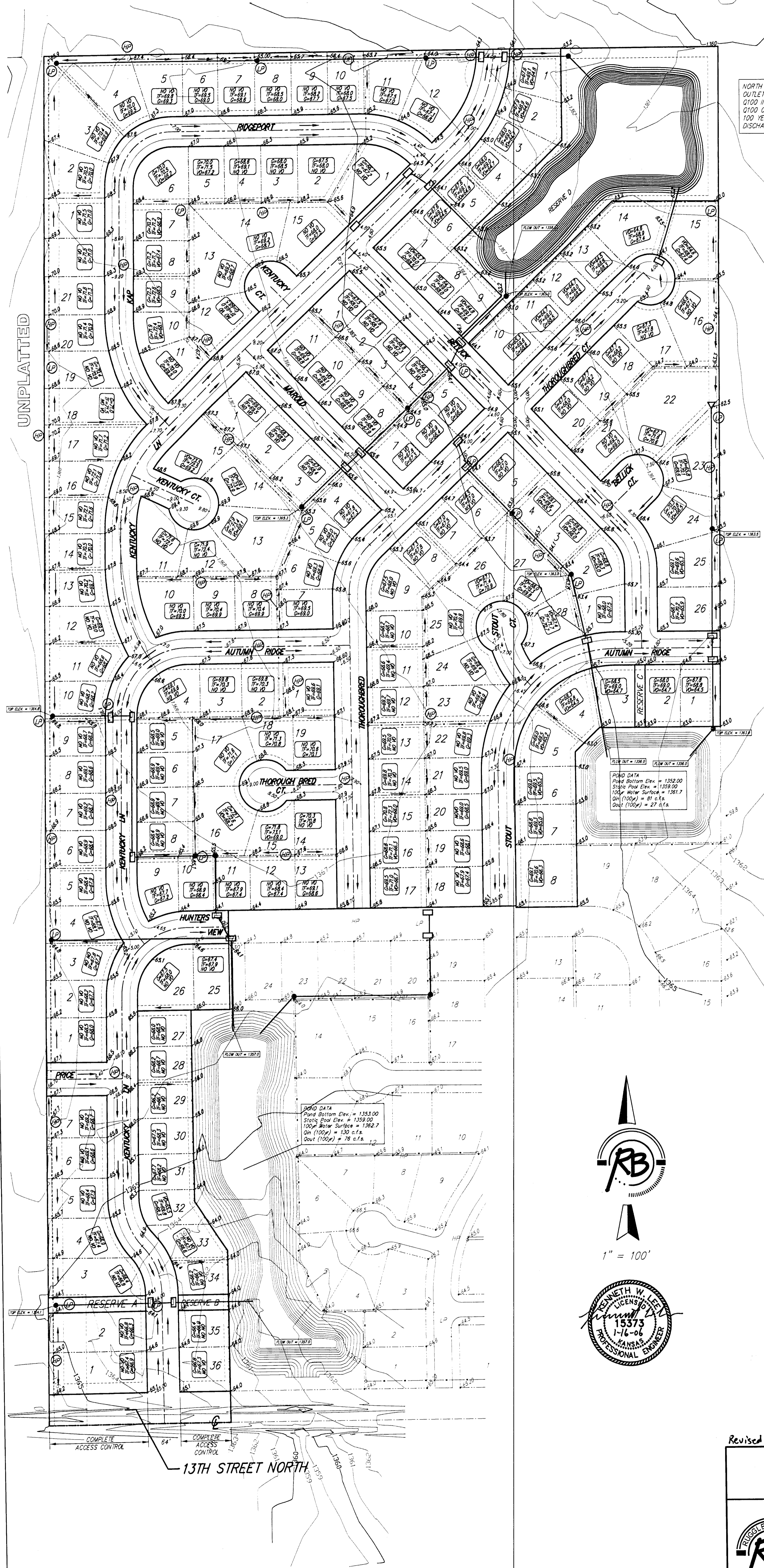
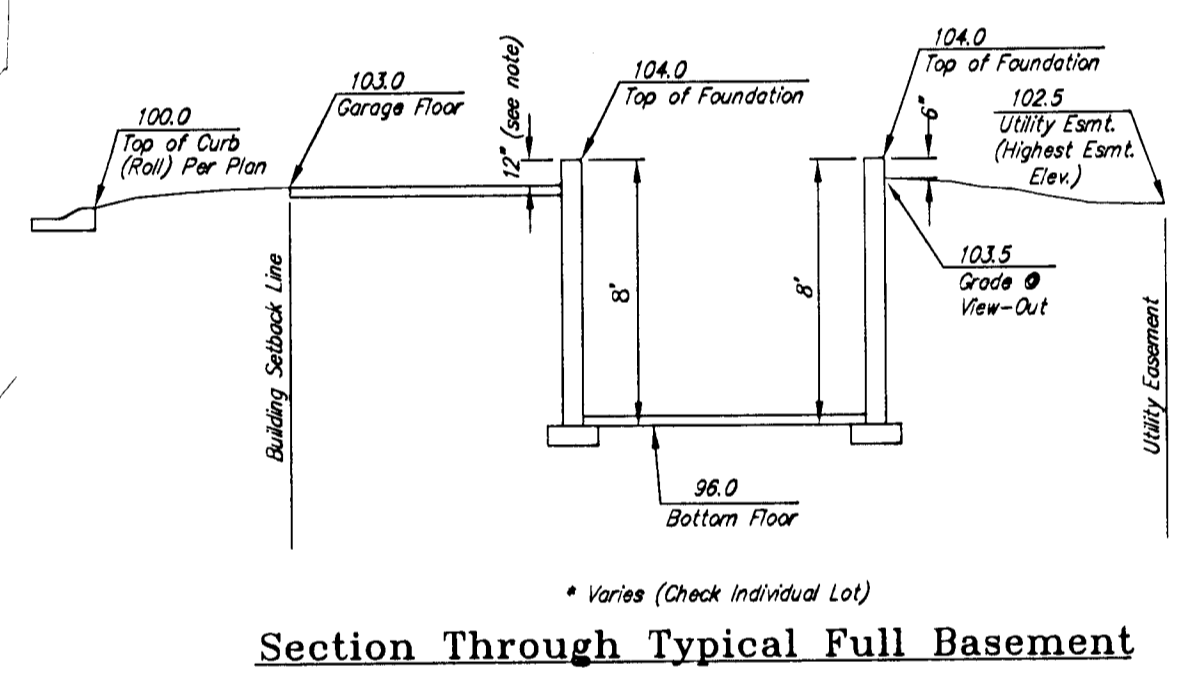
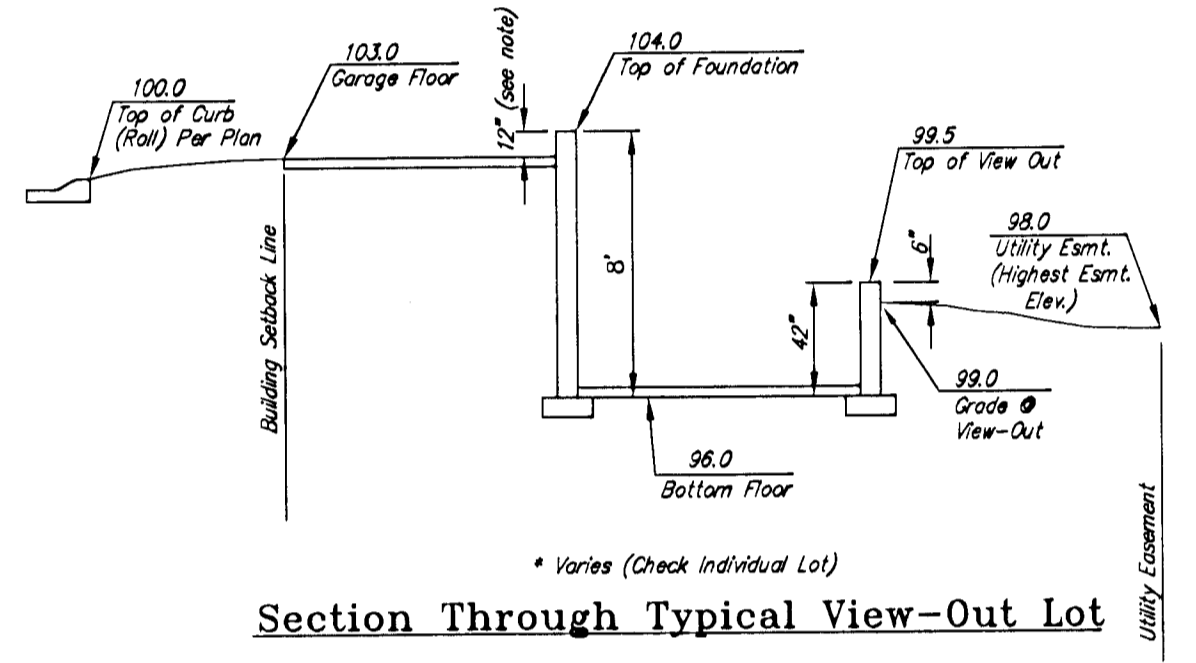
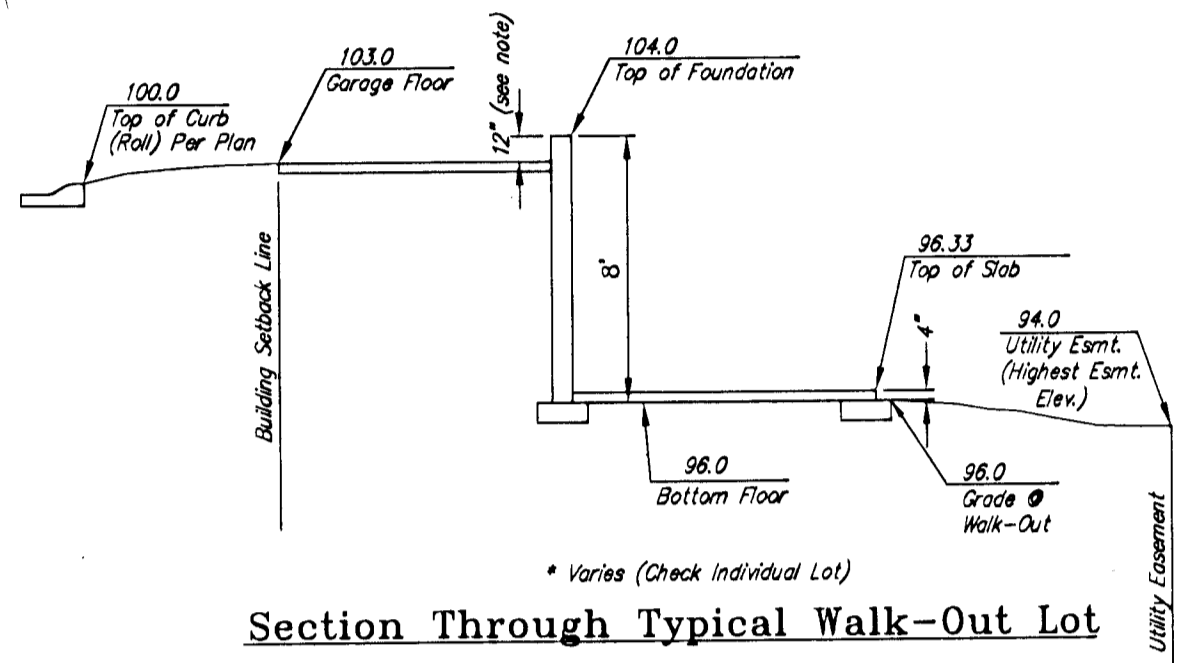


Subdivision Grading Plan CHERYL'S HOLLOW 2ND ADDITION

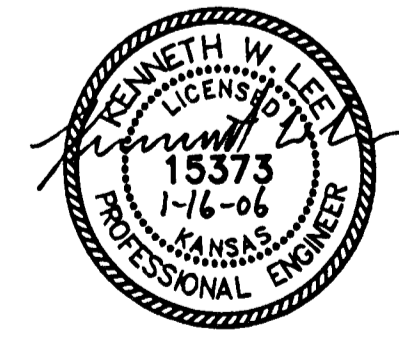
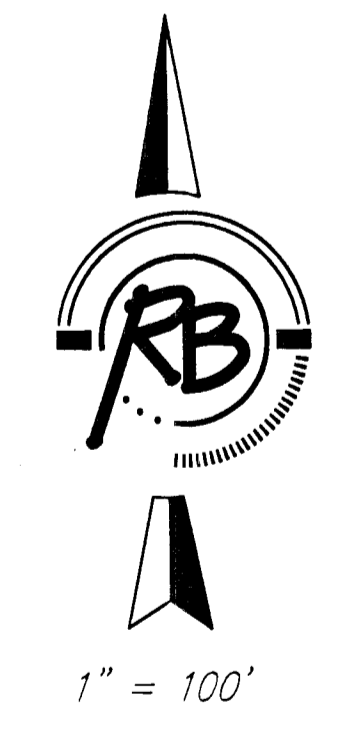
Wichita, Sedgwick County, Kansas



NORTH POND:
 OUTLET STRUCTURE: 4.5' NOTCHED WEIR
 5100 INFLOW (UNDEVELOPED) = 122 CFS
 5100 OUTFLOW FROM POND = 62 CFS
 100 YEAR WATER SURFACE = 1361.2
 DISCHARGE TO SWALE FLOWING NORTH



A 6" Berm will be required along the west property line to prevent water from exiting site.



LEGEND

- XX- Proposed Corner Grade
- G=69.5 Proposed Viewout Elevation
- TF=70.0 Proposed Garage Floor
- VO=65.7 Proposed Top of Foundation

BENCH MARK: COW BENCHMARK AT THE SOUTHWEST CORNER OF INTERSECTION OF 135TH ST. W. AND 13TH ST. N., EAST SIDE OF CONC. BASE FOR HLP 30 1/2 S. OF CENTER LINE AND 35 1/2 W. OF CENTER LINE ELEV.=1355.65 (M.S.L.)

ON SITE BENCH MARK: R.R. SPIKE ON NORTH FACE OF HIGHLINE POWER POLE 131 FEET WEST AND 28 FEET SOUTH OF THE S.E. CORNER, W/2, SE1/4, SEC. 11, T27S, R2W ELEV.=1365.16 (M.S.L.)

NOTES: THE VO OPENINGS INDICATED ON THIS PLAN ARE THE LOWEST RECOMMENDED OPENING FOR THE LOTS. A STAMPED SITE PLAN SHOULD BE PREPARED IF LOWER GRADES ARE PROPOSED.

Revised 1-16-06

CHERYL'S HOLLOW 2nd ADDITION GRADING PLAN WICHITA, KANSAS		DESIGN KWL/RLS	JOB NO. 2006
DRAWN RLS		REVIEW	
Ruggles & Bohm, P.A. Engineering, Surveying, Land Planning 924 North Main (318) 284-8008 Wichita, Kansas 67203(318) 284-4821 fax www.rbkansas.com E-mail: info@rbkansas.com		DATE Dec. 14, 2005	SHEET 1 OF 1
DRAWING FILE Phase 2 Grading Plan	PROJECT NUMBER Proj. No.		