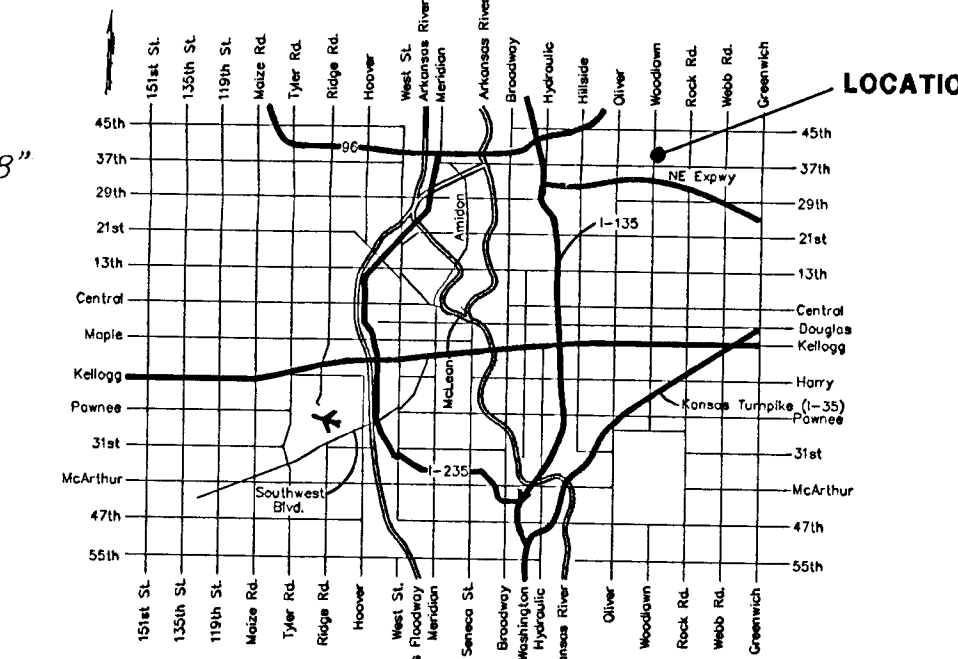
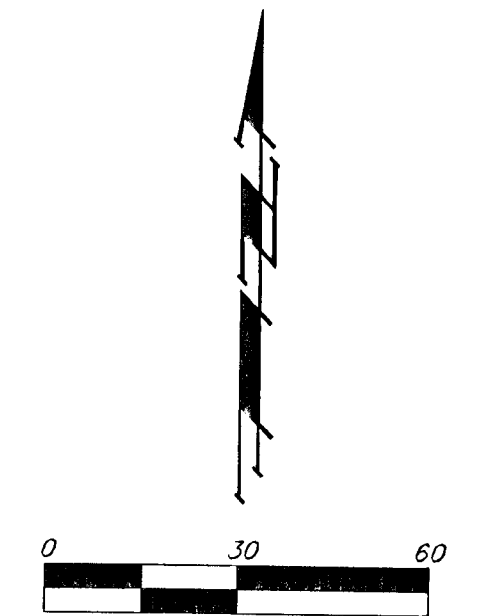
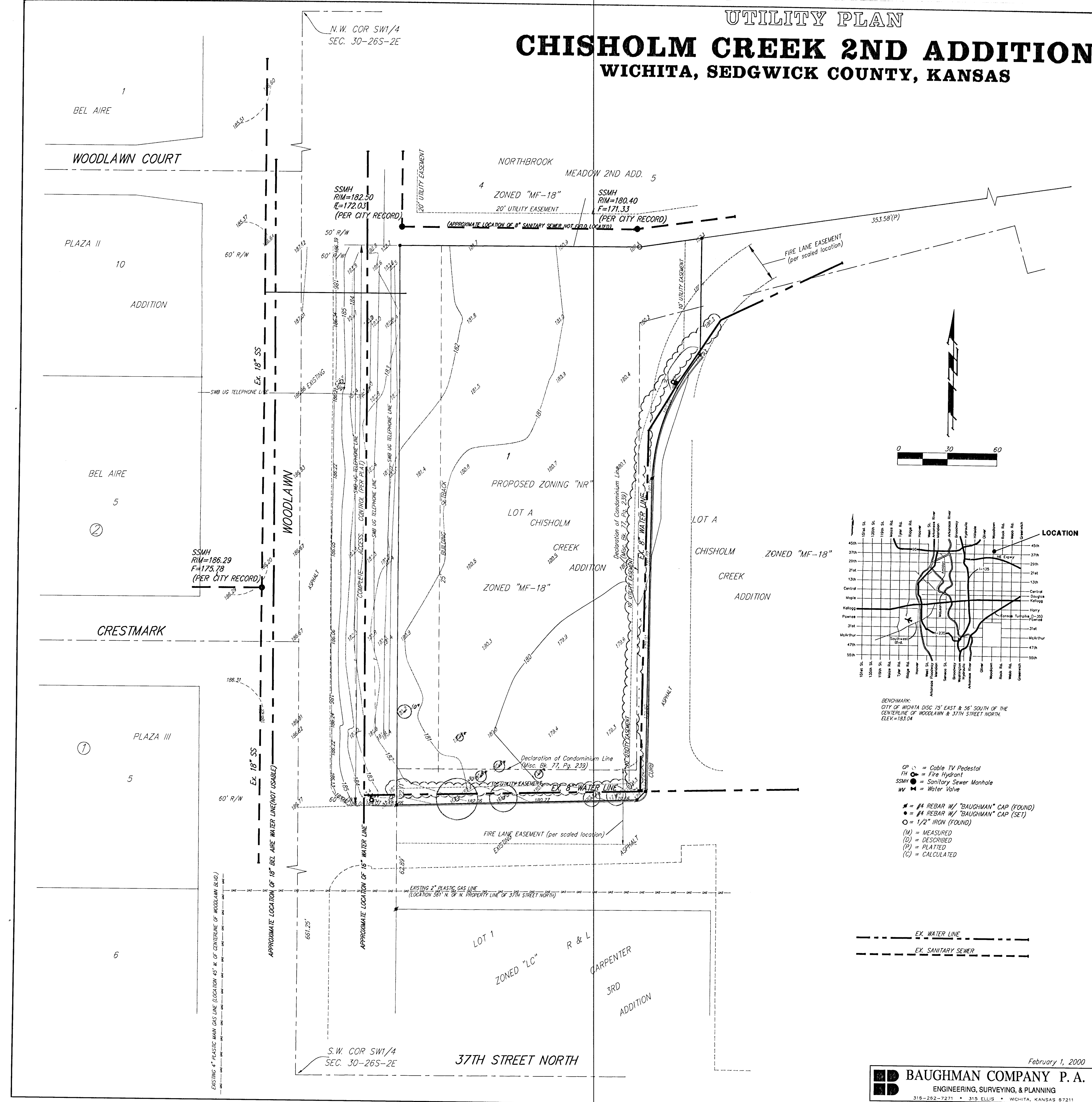


UTILITY PLAN

CHISHOLM CREEK 2ND ADDITION

WICHITA, SEDGWICK COUNTY, KANSAS



BENCHMARK:
CITY OF WICHITA DISC 75' EAST & 58' SOUTH OF THE
CENTERLINE OF WOODLAWN & 37TH STREET NORTH.
ELEV=183.04

- OP = Cable TV Pedestal
- TH = Fire Hydrant
- SSMH = Sanitary Sewer Manhole
- WV = Water Valve
- # = #4 REBAR W/ "BAUGHMAN" CAP (FOUND)
- = #4 REBAR W/ "BAUGHMAN" CAP (SET)
- = 1/2" IRON (FOUND)
- (M) = MEASURED
- (C) = CALCULATED
- (P) = PLATED
- (C) = CALCULATED

