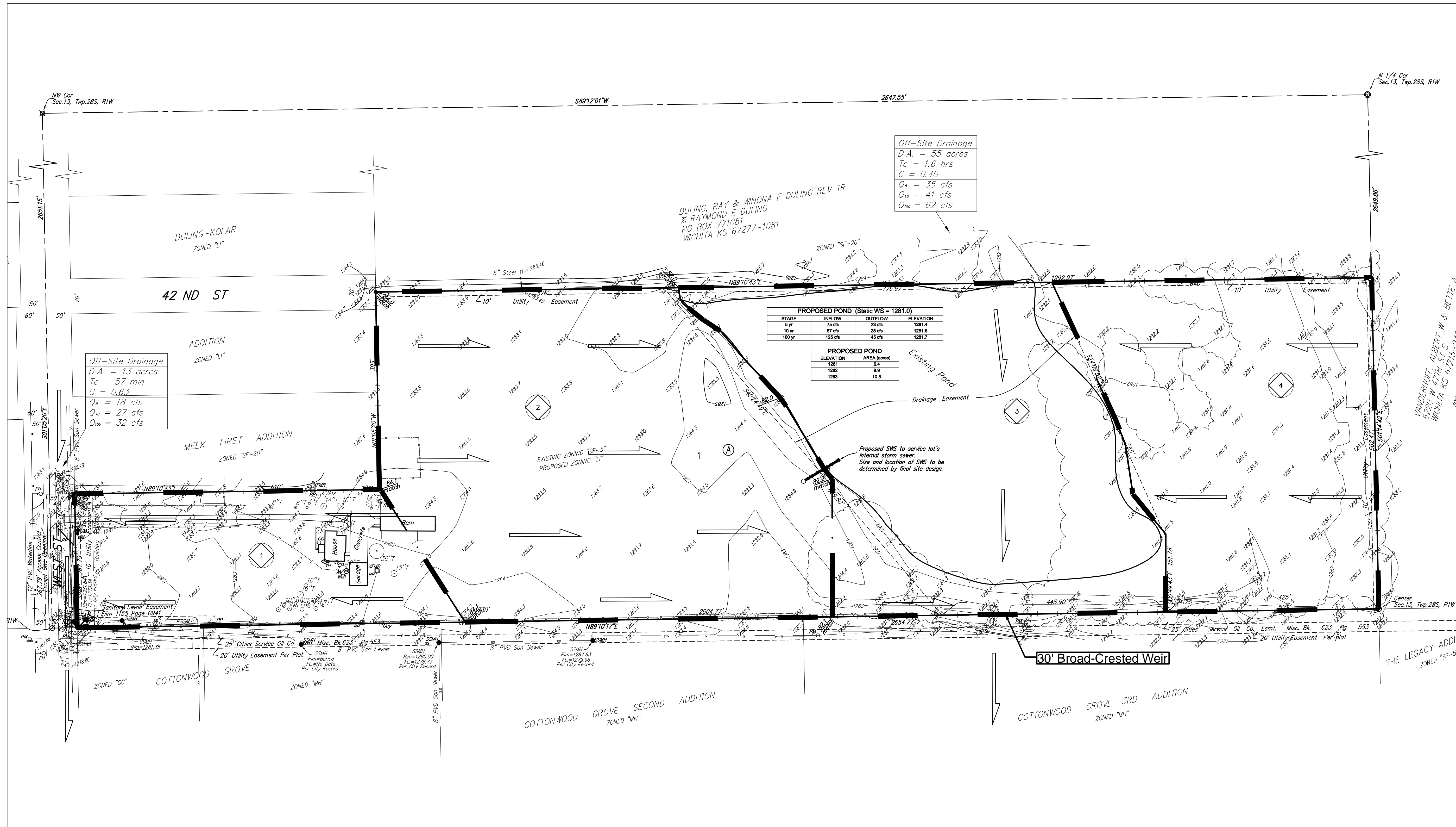


GRADING & DRAINAGE PLAN
LANGE ADDITION
 WICHITA, SEDGWICK COUNTY, KANSAS



Off-Site Drainage
 D.A. = 55 acres
 Tc = 1.6 hrs
 C = 0.40
 Qs = 35 cfs
 Qw = 41 cfs
 Qwo = 62 cfs

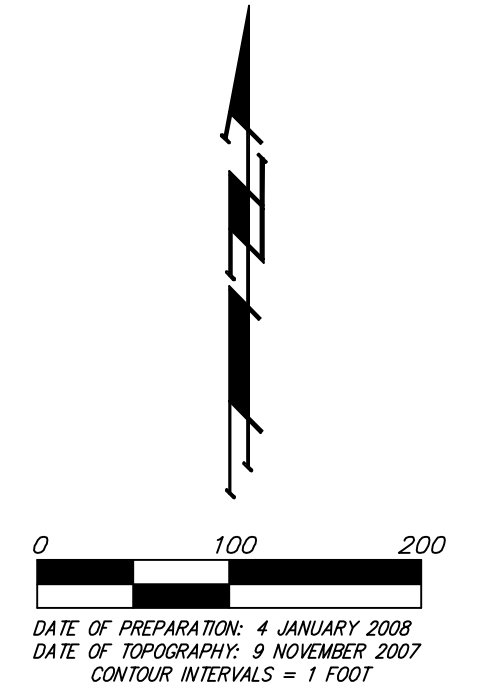
PROPOSED POND (Static WS = 1281.0)

STAGE	INFLOW	OUTFLOW	ELEVATION
5 yr	75 cfs	23 cfs	1281.4
10 yr	87 cfs	28 cfs	1281.5
100 yr	125 cfs	41 cfs	1281.7

PROPOSED POND

ELEVATION	AREA (acres)
1281	6.4
1282	8.9
1283	10.3

Off-Site Drainage
 D.A. = 13 acres
 Tc = 57 min
 C = 0.63
 Qs = 18 cfs
 Qw = 27 cfs
 Qwo = 32 cfs



OWNER:
 JBL, Inc.
 Attn: Jeff Lange
 4911 S. Meridian
 Wichita, Kansas 67217
 Phone 529-3100

LEGAL DESCRIPTION:
 The S 1/2 of the S 1/2 of the NW 1/4 of Sec. 13, Twp. 28-S, R-1-W of the 6th P.M., Sedgwick County, Kansas, EXCEPT the north 395 feet of the west 660.00 feet thereof, and EXCEPT the west 40 feet for roadway.

BENCHMARK:
 COW Benchmark, Disc. NW corner Lift Station 53' NE of W 1/4 Cor Sec 13 Twp28S R1W
 Elevation = 1282.52 NAVD88

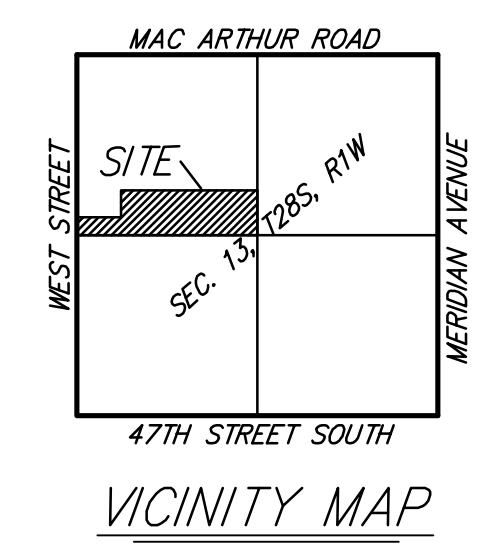
- NOTES:**
- ALL STREET ELEVATIONS SHOWN ON PLANS ARE FOR TOP OF CURB (FULL-HEIGHT).
 - ALL LOTS SHALL MEET MINIMUM PAD REQUIREMENT AS SHOWN ON THE RECORDED PLAT.

MINIMUM BUILDING PAD ELEVATIONS FOR LOWEST OPENING TO THE STRUCTURES

LOT	BLOCK	ELEVATION MSL
1	A	1284.7

- LOT DIMENSIONS HAVE BEEN OMITTED ON THIS PLAN. REFER TO THE RECORDED PLAT FOR FINAL DIMENSION, EASEMENT, & BUILDING SETBACK INFORMATION.
- A DRAINAGE PLAN HAS BEEN DEVELOPED FOR THIS DEVELOPMENT AND IS ON FILE WITH THE CITY OF WICHITA, KANSAS. DRAINAGE INTENT SHALL REMAIN AS DEPICTED OR AS MODIFIED WITH THE APPROVAL OF THE CITY ENGINEER OF THE CITY OF WICHITA, KANSAS. NO OBSTRUCTIONS WHICH IMPEDE THE FLOW OF THIS DRAINAGE PLAN SHALL BE ALLOWED.
- ALL ELEVATIONS SHOWN ARE IN NAVD.

NOTE: Site currently located in FEMA Zone X per FEMA FIRM Panel 485 of 700, for Sedgwick County, Kansas. Map number 20173C0485E, Effective February 2, 2007.



Developed	5yr	10yr	100yr
Intensity	4.56	5.22	7.37
Rational C	0.69	0.73	0.8

Basin ID	Area acres	Developed Flowrates		
		5-yr cfs	10-yr cfs	100-yr cfs
1	4.3	13.5	16.4	25.4
2	12.0	37.8	45.7	70.8
3	10.0	31.5	38.1	59.0
4	7.8	24.5	29.7	46.0
TOTAL	34.1	107	130	201