

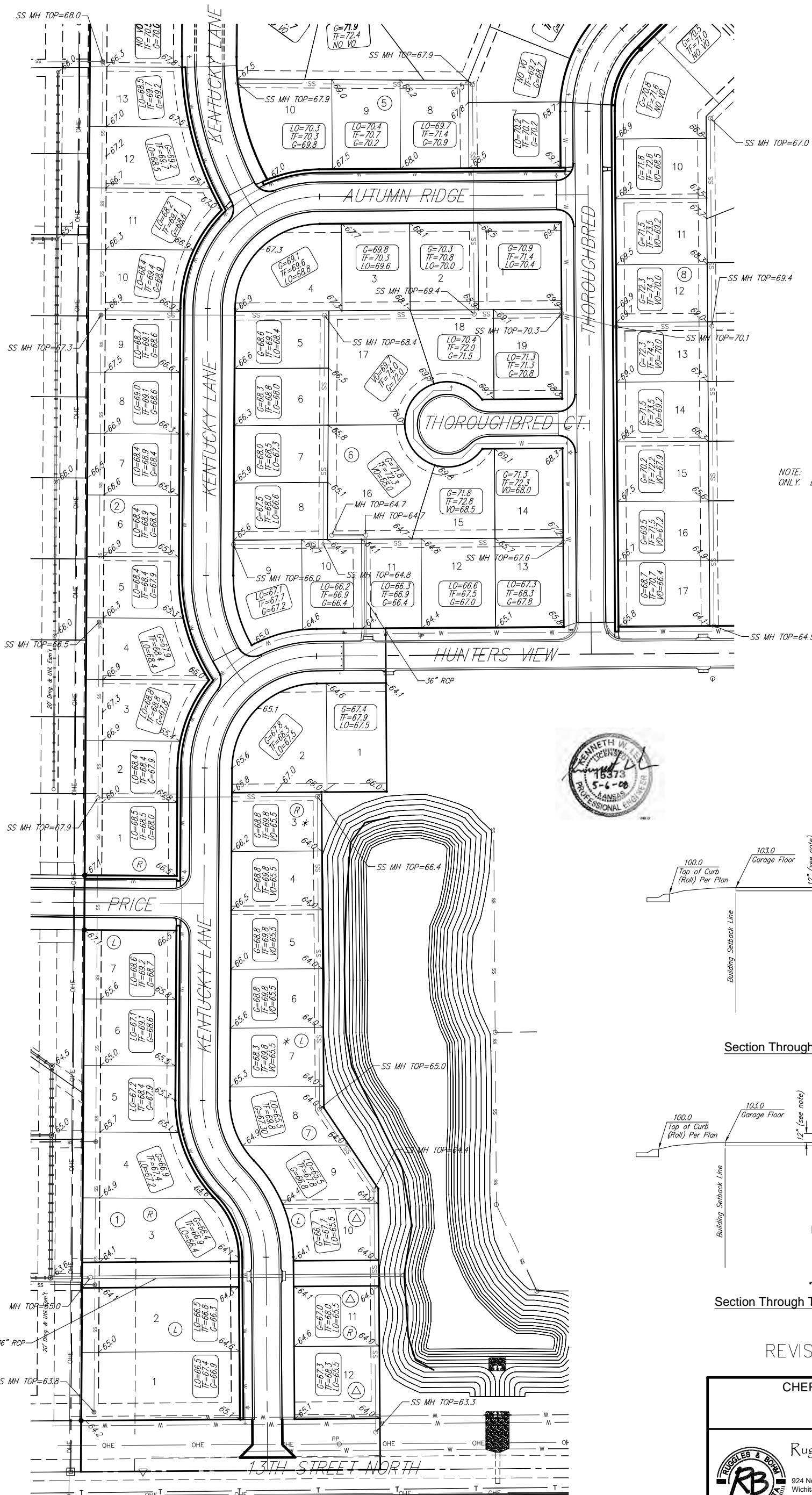
CHERYL'S HOLLOW 2ND ADDITION

Phase 1 Grading Plan

Wichita, Sedgwick County, Kansas



1" = 60'



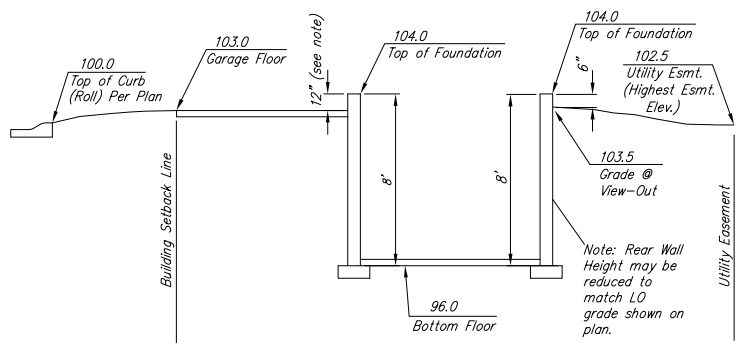
MINIMUM BUILDING PAD ELEVATION FOR LOWEST OPENING INTO STRUCTURES		
BLOCK	LOT NO.	ELEVATION (N.G.V.D.)
7	1, 2, 3, 4, 5, 6, 7, 8, 9, 10, 11, 12	1364.5

BENCH MARK: COW BENCHMARK AT THE SOUTHWEST CORNER OF INTERSECTION OF 135TH ST. W. AND 13TH ST. N., EAST SIDE OF CONC. BASE FOR HLP 30'± S. OF CENTER LINE AND 35'± W. OF CENTER LINE ELEV.=1355.65 (M.S.L.)

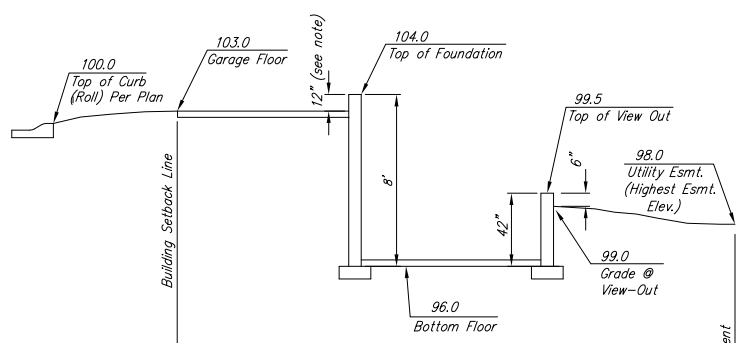
ON-SITE BENCH MARK: R.R. SPIKE ON NORTH FACE OF HIGHLINE POWER POLE 131 FEET WEST AND 28 FEET SOUTH OF THE S.E. CORNER, W 1/2 SE 1/4 SEC. 11, T27S, R2W ELEV.=1365.16 (M.S.L.)

NOTE: RIGHT AND LEFT DESIGNATIONS ARE RECOMMENDATIONS ONLY. BUILDER CAN VARY GARAGE ORIENTATIONS.

- LEGEND**
- XX.X Proposed Corner Grade
 - G=XX.X Proposed Garage Floor
 - TF=XX.X Proposed Top of Foundation
 - VO=XX.X Proposed Viewout Elevation
 - LO=XX.X Recommended Low Opening for Grading (Not a minimum Pad)
 - △ BECAUSE OF SHALLOW SEWER TF MAY BE DROPPED TO 1367.0 IF BI-LEVEL HOUSE PLAN IS USED.
 - L GARAGE LEFT
 - R GARAGE RIGHT
 - * NOTE: BRICK LEDGE & SIDING MUST BE DROPPED ON RETAINING WALLS USED ON THESE LOTS



Section Through Typical Full Basement



Section Through Typical View-Out Lot

REVISED May 6, 2008

CHERYL'S HOLLOW 2ND ADDITION GRADING PLAN WICHITA, KANSAS		DESIGN KWL	SHEET 1 OF 1
Ruggles & Bohm, P.A. Engineering, Surveying, Land Planning		DRAWN MLP	
924 North Main Wichita, Kansas 67203 www.rbkansas.com		REVIEW	
(316) 264-8008 (316) 264-4621 fax E-mail: info@rbkansas.com		UTILITY	
DRAWING FILE Grading Plan {Grading Plan}		DATE Dec. 18, 2007	