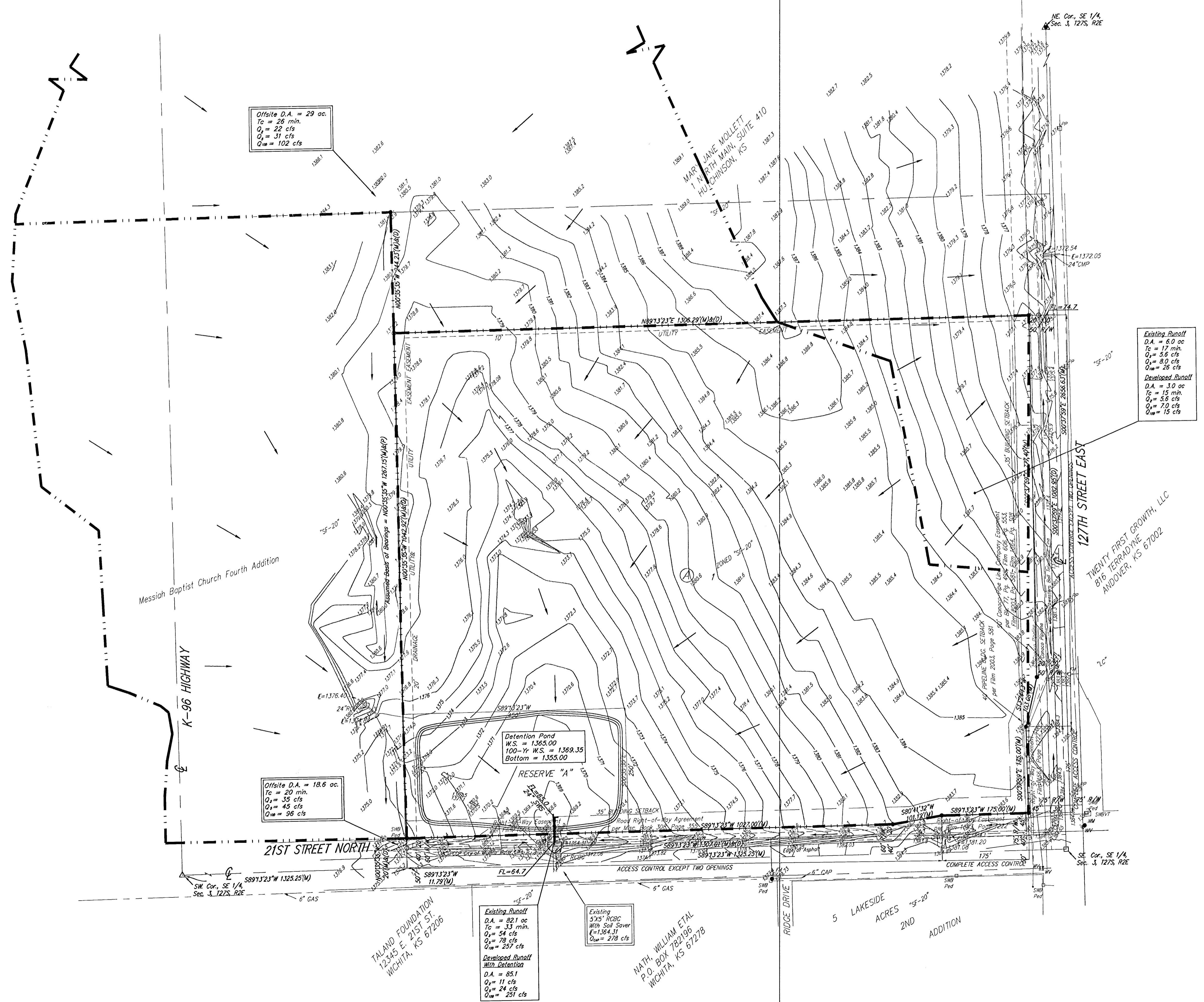


DRAINAGE PLAN

CHURCH OF THE MAGDALEN ADDITION

SEDGWICK COUNTY, KANSAS



Offsite D.A. = 29 ac.
 Tc = 28 min.
 Q₁ = 22 cfs
 Q₂ = 31 cfs
 Q₃ = 102 cfs

Existing Runoff
 D.A. = 6.0 ac
 Tc = 15 min.
 Q₁ = 5.5 cfs
 Q₂ = 8.0 cfs
 Q₃ = 28 cfs

Developed Runoff
 D.A. = 3.0 ac
 Tc = 15 min.
 Q₁ = 5.5 cfs
 Q₂ = 7.0 cfs
 Q₃ = 15 cfs

Offsite D.A. = 18.6 ac.
 Tc = 20 min.
 Q₁ = 35 cfs
 Q₂ = 45 cfs
 Q₃ = 96 cfs

Existing Runoff
 D.A. = 82.1 ac
 Tc = 33 min.
 Q₁ = 54 cfs
 Q₂ = 78 cfs
 Q₃ = 251 cfs

Developed Runoff
 With Detention
 D.A. = 85.1
 Q₁ = 11 cfs
 Q₂ = 24 cfs
 Q₃ = 251 cfs

Existing RCBC
 With Soil Saver
 E = 1304.31
 Q₁ = 278 cfs

0 100 200
 CONTOUR INTERVAL = 1 FT.

- FH = Fire Hydrant
- GV = Gas Valve
- PP = Power Pole
- SWB Ped = Southwestern Bell Pedestal
- WM = Water Meter
- ⊕ WV = Water Valve

- = #4 Baughman Rebar Set
- = #4 Baughman Rebar Found
- = 3/4" Iron Pipe Found
- △ = #5 Forgy Rebar Found
- ▲ = #4 Rebar Found over Stone

OWNER:
 The Catholic Diocese of Wichita
 424 N. Broadway
 Wichita, KS 67202
 PH. (316) 269-3900

LEGAL DESCRIPTION:
 Beginning at the SE corner of the SE 1/4 of Sec. 3, Twp. 27-S, R-2-E, of the 6th P.M., Sedgwick County, Kansas; thence north along the east line of said SE 1/4, 1082.95 feet; thence west parallel with the south line of said SE 1/4, 1336.29 feet to a point on the east line of Lot 1, Block A, Messiah Baptist Church 4th Addition, Sedgwick County, Kansas; thence south along the east line of said Lot 1, and as extended south, 1082.95 feet to a point on the south line of said SE 1/4; thence east along the south line of said SE 1/4, 1337.04 feet to the point of beginning, subject to road rights-of-way of record.

BENCHMARK:
 County "C" Out South Headwall 1/2 mi. West of 127th St. East on 37th St. North.

NOTE:
 1. Easement granted to Shell Petroleum Corp. in Book Misc. 27, Page 411 for telephone and telegraph lines over the SE 1/4 of Sec. 3-27-2E, and last assigned to Conoco Pipeline Company by the instrument filed on Film 1664, Page 308.

Messiah Baptist Church Fourth Addition

K-96 HIGHWAY

21ST STREET NORTH

127TH STREET EAST

TWENTY FIRST GROWTH, LLC
 816 FERRADINE
 ANDOVER, KS 67002

TALINO FOUNDATION
 12345 E. 151 ST.
 WICHITA, KS 67208

MATH, WILLIAM ETAL
 P.O. BOX 182 Bg
 WICHITA, KS 67278