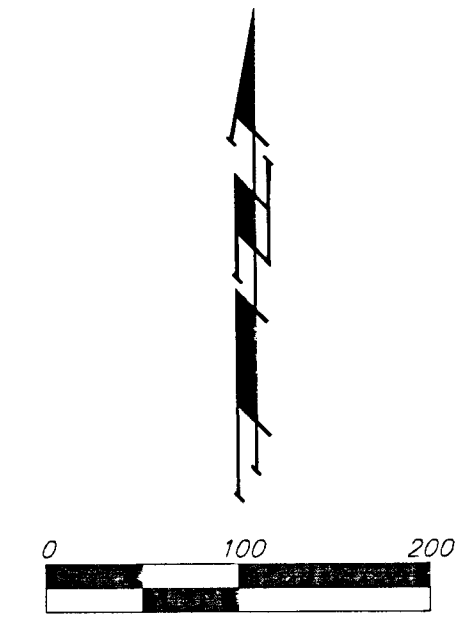


# DRAINAGE PLAN

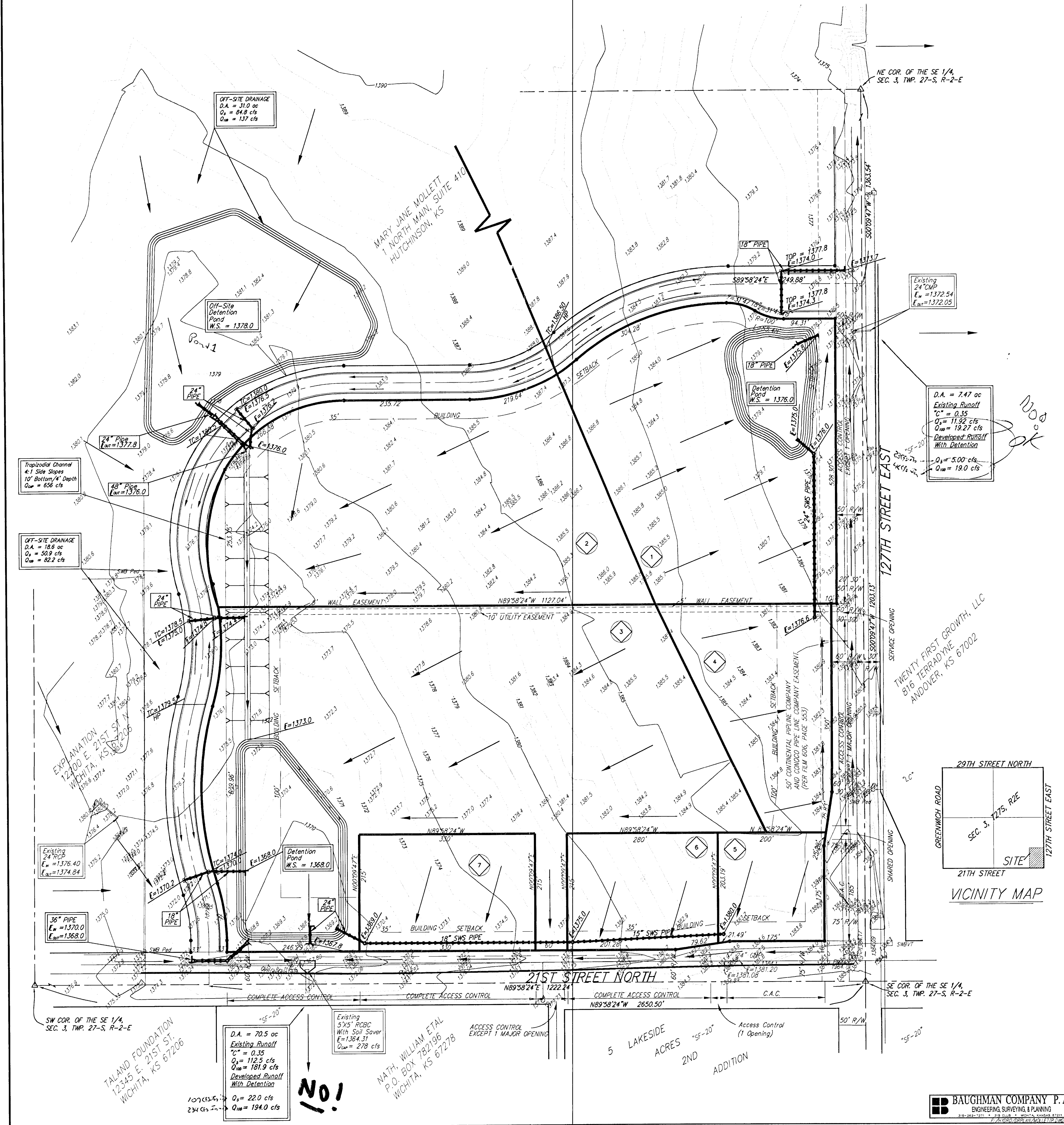
## MOLLETT COMMERCIAL ADDITION

### SEDGWICK COUNTY, KANSAS



Drainage Area	Area (Acres)	C <sub>s</sub>	C <sub>m</sub>	T <sub>t</sub> (min)	T <sub>t</sub> (hr)	Q <sub>1</sub> (cfs)	Q <sub>2</sub> (cfs)	Q <sub>3</sub> (cfs)
1	5.31	0.80	0.80	15	4.56	7.37	19.4	31.3
2	6.33	0.80	0.80	15	4.56	7.37	23.1	37.3
3	10.7	0.90	0.90	15	4.56	7.37	43.9	71.0
4	2.16	0.90	0.90	15	4.56	7.37	8.86	14.3
5	0.91	0.90	0.90	15	4.56	7.37	3.73	6.04
6	1.37	0.90	0.90	15	4.56	7.37	3.62	6.09
7	1.63	0.90	0.90	15	4.56	7.37	6.89	10.8

- GU = Guard Post (Bollard)
- FH = Fire Hydrant
- PM = Pipeline Marker
- PP = Power Pole
- SP = Sign
- SW = Southwestern Bell Vault
- = #1 REBAR W/ "BAUGHMAN" CAP (SE1)
- △ = SEC COR (FOUND)



O.A. = 70.5 ac  
 Existing Runoff  
 C<sub>s</sub> = 0.35  
 Q<sub>1</sub> = 112.5 cfs  
 Q<sub>2</sub> = 181.9 cfs  
 Developed Runoff  
 Min. Detention  
 Q<sub>1</sub> = 22.0 cfs  
 Q<sub>2</sub> = 154.0 cfs