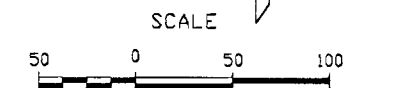
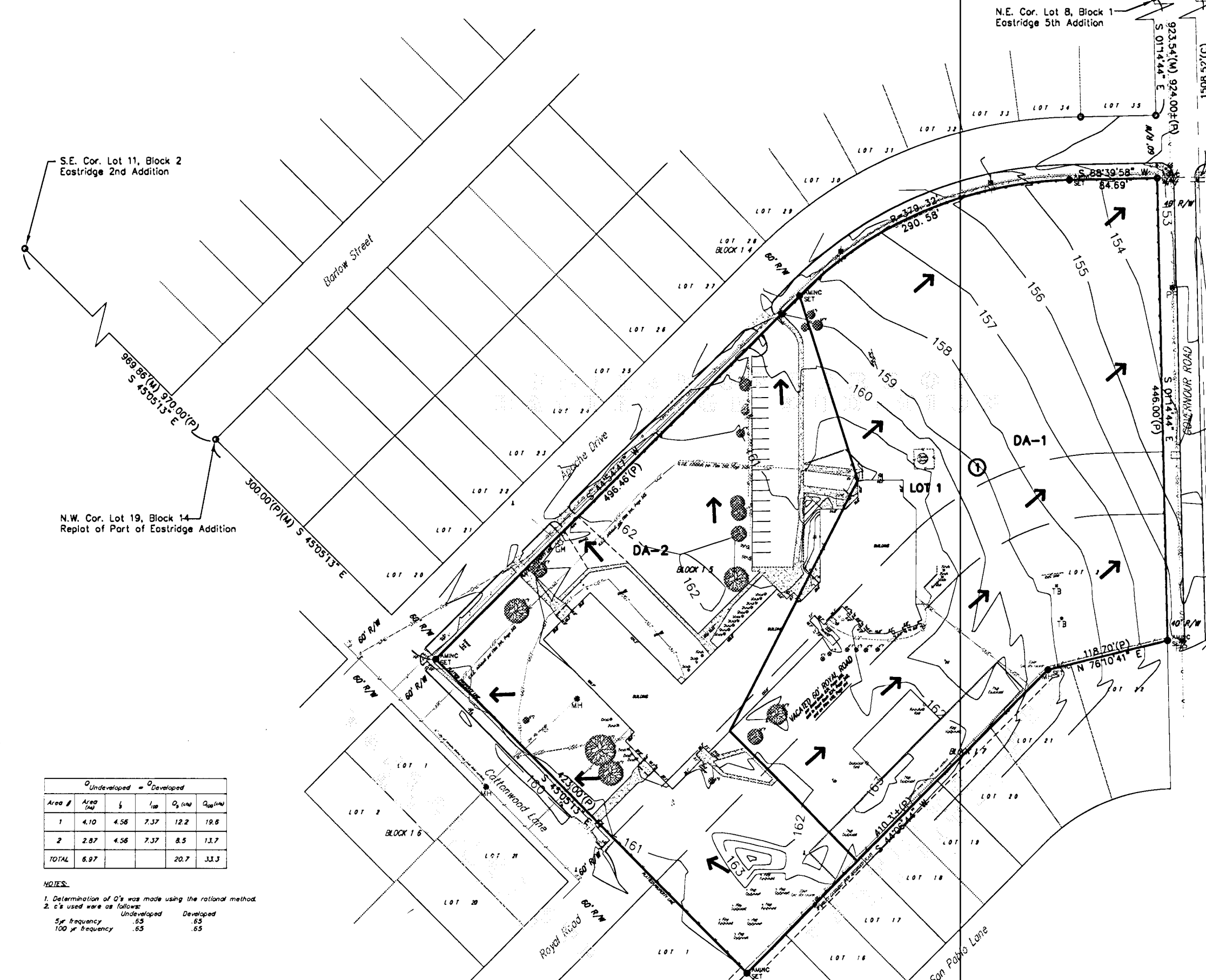
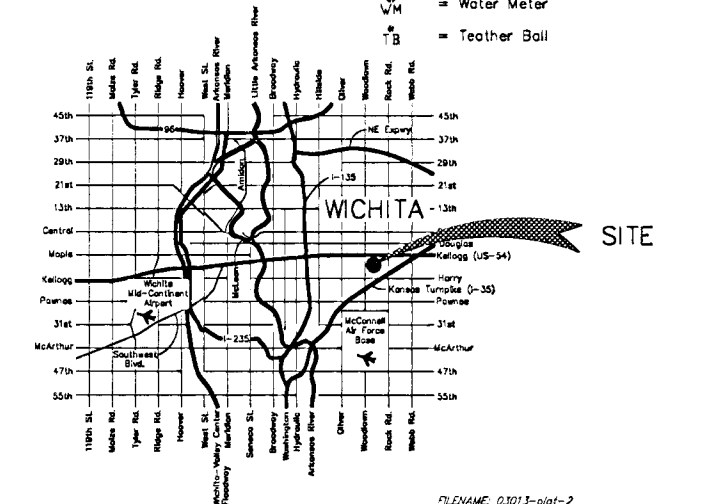


DRAINAGE PLAN CLARK ELEMENTARY ADDITION WICHITA, SEDGWICK COUNTY, KANSAS



LEGEND

- = 1/2" Iron Pipe (found)
- = 3/4" Iron Pipe (found)
- = 5/8" Rebar AMINC CLS #104 (set)
- (P) = Platted
- (M) = Measured
- (C) = Calculated
- BPED = Bell Pedestal
- ⊕ = Bollard
- = Concrete
- ⊕ = Fire Hydrant
- ⊕ = Electric Riser
- ⊕ = Fence
- ⊕ = Gas Meter
- ⊕ = Guy Anchor
- ⊕ = Light Pole
- ⊕ = Manhole
- ⊕ = Overhead Electric
- POST = Post
- ⊕ = Power Pole
- ⊕ = Sanitary Sewer
- ⊕ = Sign
- ⊕ = Tree
- ⊕ = Underground Electric
- ⊕ = Underground Telephone
- ⊕ = Water
- ⊕ = Water Meter
- ⊕ = Teether Ball



VICINITY MAP

- BENCHMARK
1. cut on N. side of S.W. walk Approx. 73' S.W. of S.W. Building Entrance. Elev. 160.93 (city datum)
 2. cut on E. side of walk N. of W. drive entrance. Elev. 158.94 (city datum)

Q _u Undeveloped = Q _d Developed					
Area #	Area (sq ft)	S	f _u	Q _u (cfs)	Q _d (cfs)
1	4.10	4.56	7.37	12.2	18.6
2	2.87	4.56	7.37	8.5	12.7
TOTAL	6.97			20.7	31.3

NOTES:
 1. Determination of Q_u was made using the rational method.
 2. S's used were as follows:
 Undeveloped 55
 Developed 85
 100 ft frequency 65

PL/NAME: 0307-1001-2

AM CONSULTING
 ENGINEERING SERVICES
 142 N. Empress Wichita, KS 67202
 316-265-5870 Fax: 316-506-5828