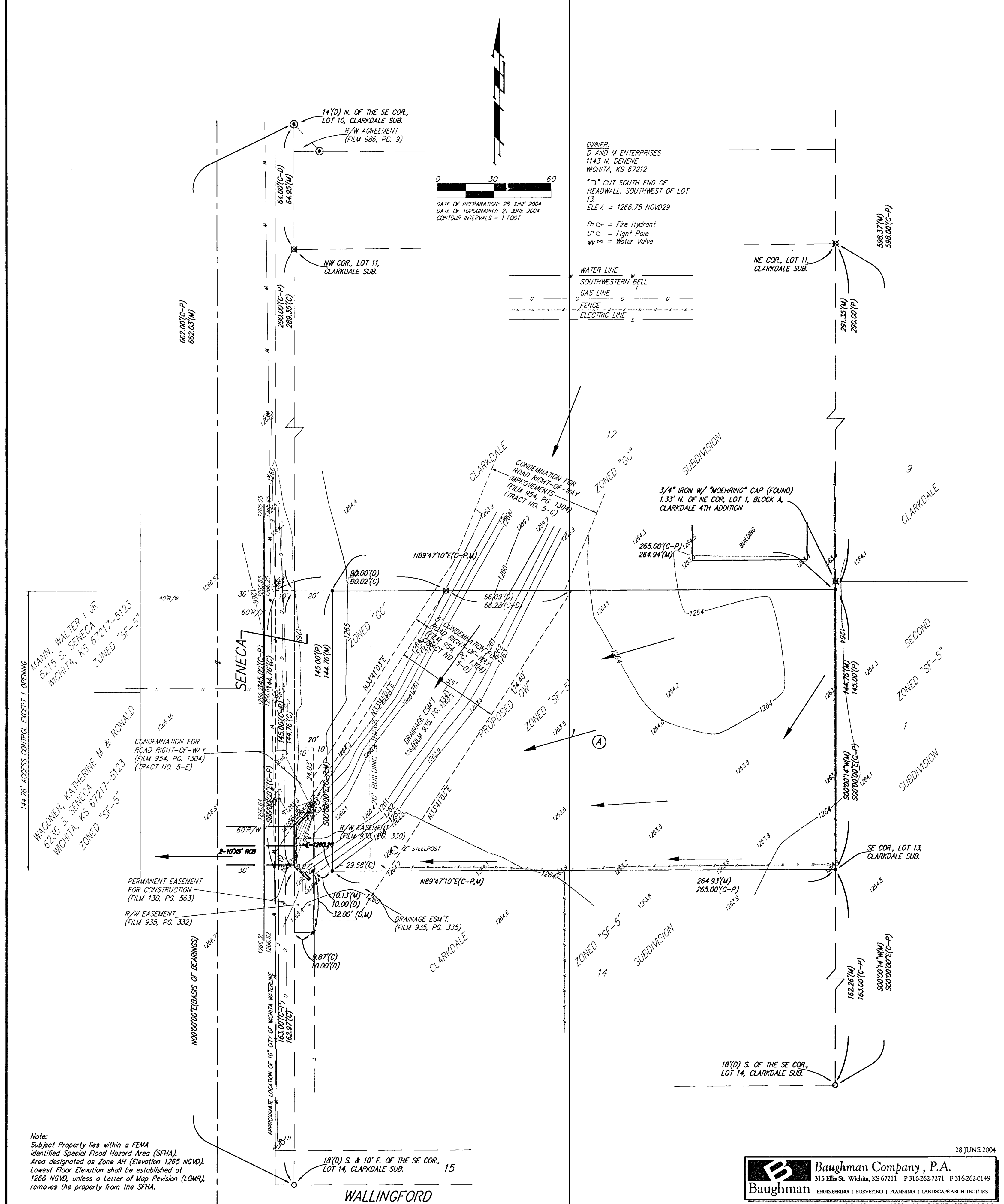


DRAINAGE PLAN

CLARKDALE 4TH ADDITION

WICHITA, SEDGWICK COUNTY, KANSAS



OWNER:
D AND M ENTERPRISES
1143 N. GENEVIE
WICHITA, KS 67212

* " CUT SOUTH END OF
HEADWALL, SOUTHWEST OF LOT
13.
ELEV. = 1266.75 NGVD29

FH = Fire Hydrant
LP = Light Pole
WV = Water Valve

WATER LINE
SOUTHWESTERN BELL
GAS LINE
FENCE
ELECTRIC LINE

Note:
Subject Property lies within a FEMA
Identified Special Flood Hazard Area (SFHA).
Area designated as Zone AH (Elevation 1265 NGVD).
Lowest Floor Elevation shall be established at
1265 NGVD, unless a Letter of Map Revision (LOMR)
removes the property from the SFHA.

28 JUNE 2004

B Baughman Company, P.A.
Baughman 315 Ellis St. Wichita, KS 67211 P 316.262.7271 F 316.262.0149
ENGINEERING | SURVEYING | PLANNING | LANDSCAPE ARCHITECTURE
F:\PLAT\CLARKDALE4THADDITION\DWG\CLARKDALE.DWG RKR