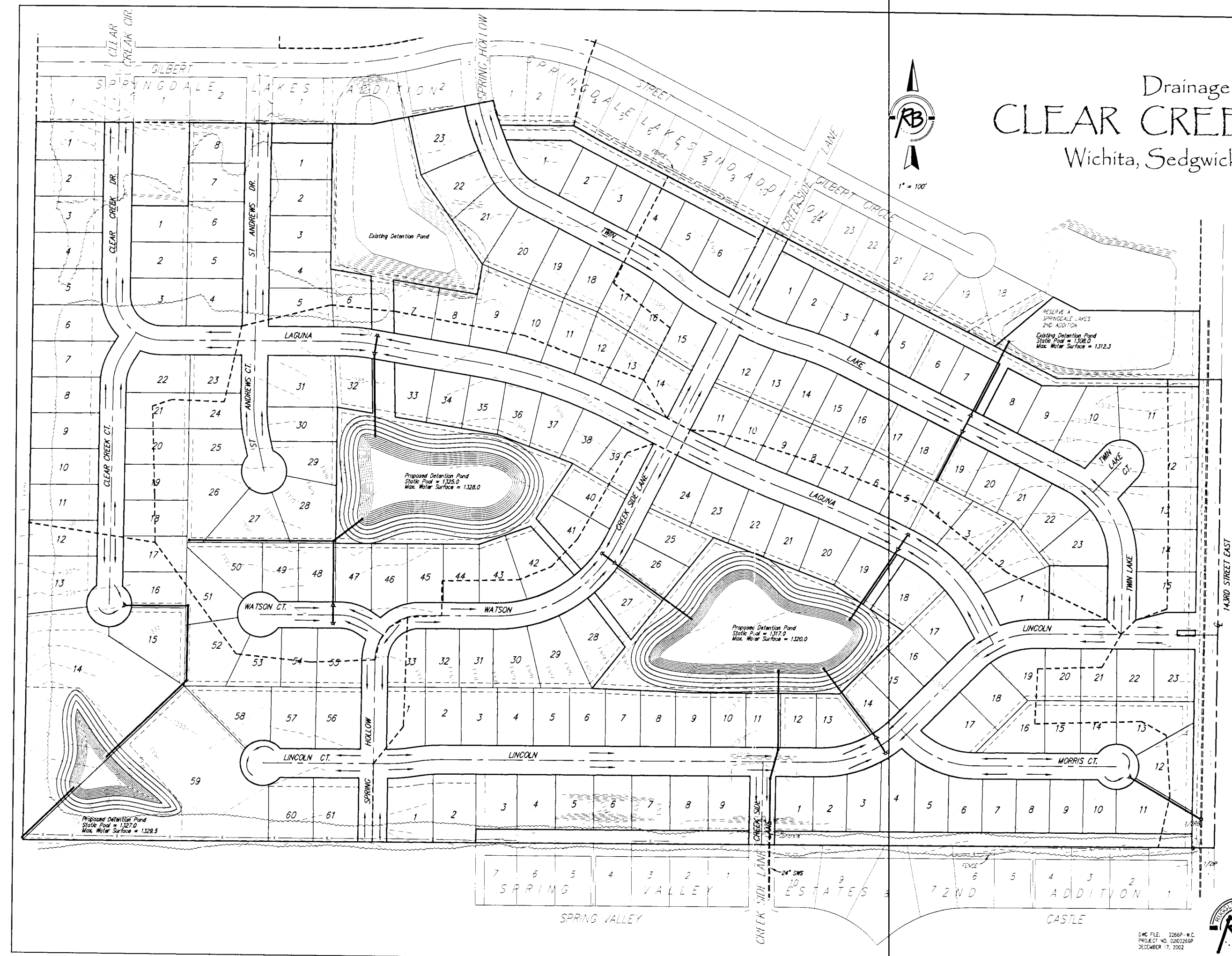
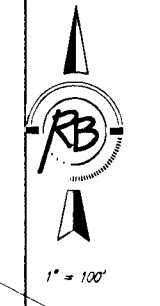


Drainage Concept CLEAR CREEK ADDITION Wichita, Sedgwick County, Kansas

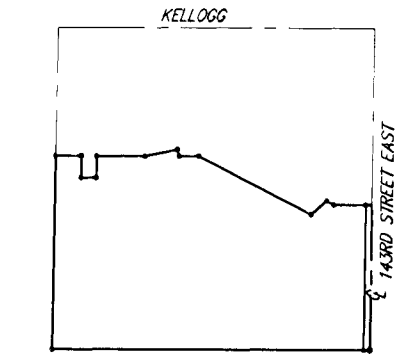


Brentwood Development, Inc.
 527 N. Forrestview
 Wichita, Kansas 67235
 Attn: Steve Miller
 Ph. (316) 259-2377

SUBDIVIDER & ENGINEER:
 Ruggles & Bohm P.A.

FLOOD ZONE:
 According to the FEMA/FIRM Community Panel No. 200321 0225 A, effective June 3, 1996, the property shown hereon is located in Zone C, an area of minimal flooding.

GROSS AREA:
 3,759,263.7 Sq. Ft. ±
 86.30 Acres ±



SHEET NO. 2206P-MC
 PROJECT NO. 220225P
 REVISION 11, 2002



Ruggles & Bohm, P.A.
 Engineering, Surveying, Land Planning
 924 North Main (316) 264-8008
 Wichita, Kansas 67203 (316) 264-4421 fax
 www.rbkansas.com E-mail: info@rbkansas.com