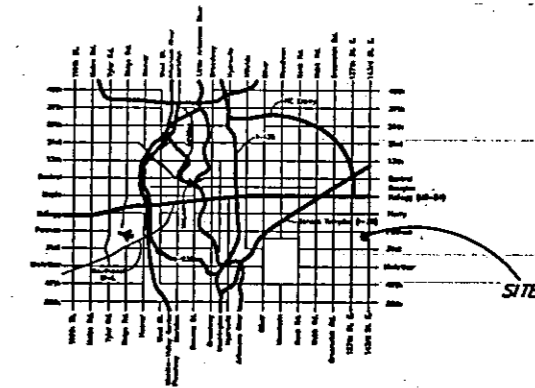


PRELIMINARY PLAT OF
CLEARY SPRINGS ADDITION

Scale: As Shown

15 leased tracts

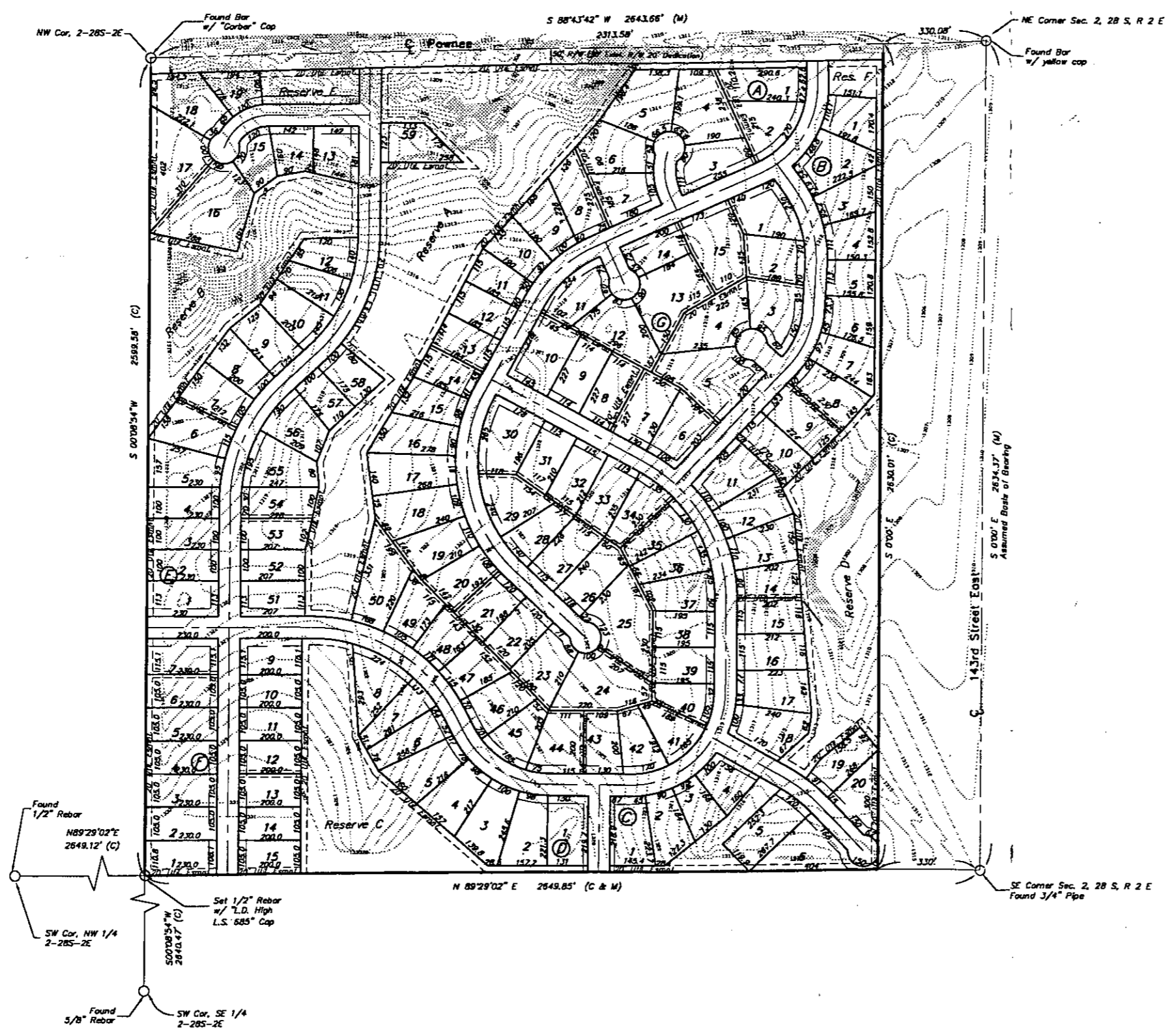


LOCATION MAP

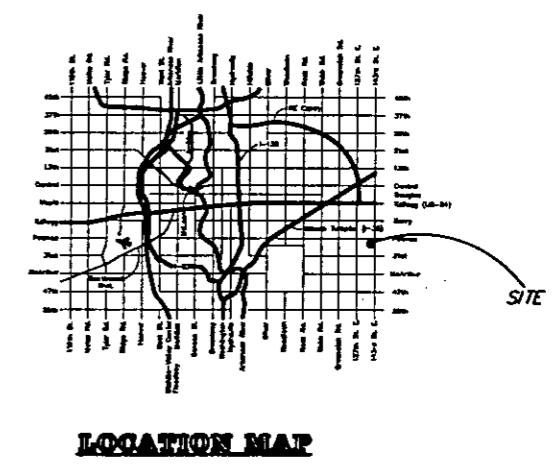
Survey By:
 LDJ Surveying, L. L. C.
 P. O. Box 781489
 Wichita, KS 67278-1489
 316.648.4144



AUSTIN MILLER P.A.
 ENGINEERING SERVICES
 254 S. Laura, Suite 210 Wichita, KS 67211
 316/262-1281 fax 316/262-8773



PRELIMINARY PLAT OF
CLEARY SPRINGS ADDITION



AUSTIN ENGINEERING SERVICES P.A.
 254 S. Lawrence Suite 210 Wichita, KS 67211
 316/262-1281 Fax 316/262-6773

PRELIMINARY PLAT OF
CLEARY SPRINGS ADDITION

State of Kansas)
 Sedgwick County) ss
 I, the undersigned licensed land surveyor in aforesaid county and state, do hereby certify that, under the supervision of the undersigned, we have surveyed and platted "CLEAR SPRINGS ADDITION", Sedgwick County, Kansas and that the accompanying plat is a true and correct exhibit of the property surveyed, described as follows:

The Northeast Quarter of Section 2, Township 28 South, Range 2 East of the 6th P. M., Sedgwick County, Kansas EXCEPT the East 330 feet thereof.

Existing public dedications and easements, being vacated by virtue of K.S.A. 12-512(b).

 Surveyor
 Lowell D. High, L. S. #685

Know all men by these presents that I, the undersigned owner have caused the land described in the Surveyors certificate to be platted into Lots to be known as "CLEAR SPRINGS ADDITION", Sedgwick County, Kansas. The utility easements are hereby granted as indicated for the construction and maintenance of all public utilities. The street dedications are for the use as public streets.

_____, Owner
 CLEARIDGE PROPERTIES, L. L. C., a Kansas limited liability company
 William Cleary, Member

State of Kansas)
 Sedgwick County) ss
 The foregoing instrument was acknowledged before me, this ____ day of _____, 199__, by William Cleary, Member, Clearidge Properties, L. L. C., personally known to be the same person who executed the foregoing instrument of writing and duly acknowledged the execution of same on behalf of the corporation.

_____, Notary Public

My App't. Exp. _____

State of Kansas)
 City of Wichita) ss

This plat of "LAWRENCE DEVELOPMENT 1ST ADDITION", Wichita, Sedgwick County, Kansas, has been submitted to and approved by the Wichita-Sedgwick County Metropolitan Area Planning Commission, Wichita, Kansas.

Dated this ____ day of _____, 1998.
 Wichita-Sedgwick County Metropolitan Area Planning Commission.

_____, Chair
 Richard Lopez

_____, Secretary
 Marvin S. Krout

State of Kansas)
 City of Wichita) ss

This plat approved and all dedications shown hereon accepted by the City Council of the City of Wichita, Kansas, this ____ day of _____, 1998.

_____, Mayor
 Bob Knight

_____, City Clerk
 Pat Burnett

Entered on transfer record this ____ day of _____, 1998.

_____, County Clerk
 James Alford

State of Kansas)
 Sedgwick County) ss

This is to certify that this plat has been filed for record in the office of the Register of Deeds, this ____ day of _____, 1998, at _____ o'clock _____; and is duly recorded.

_____, Register of Deeds
 Bill Meek

_____, Deputy
 Linda Kizzire



AUSTIN MILLER & ASSOCIATES, P.A.
 ENGINEERING SERVICES
 254 S. Lawrence Suite 210 Wichita, KS 67211
 316/262-1201 Fax 316/262-8773