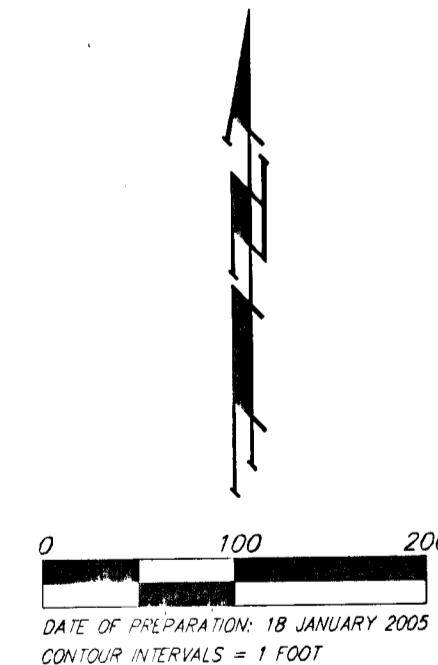
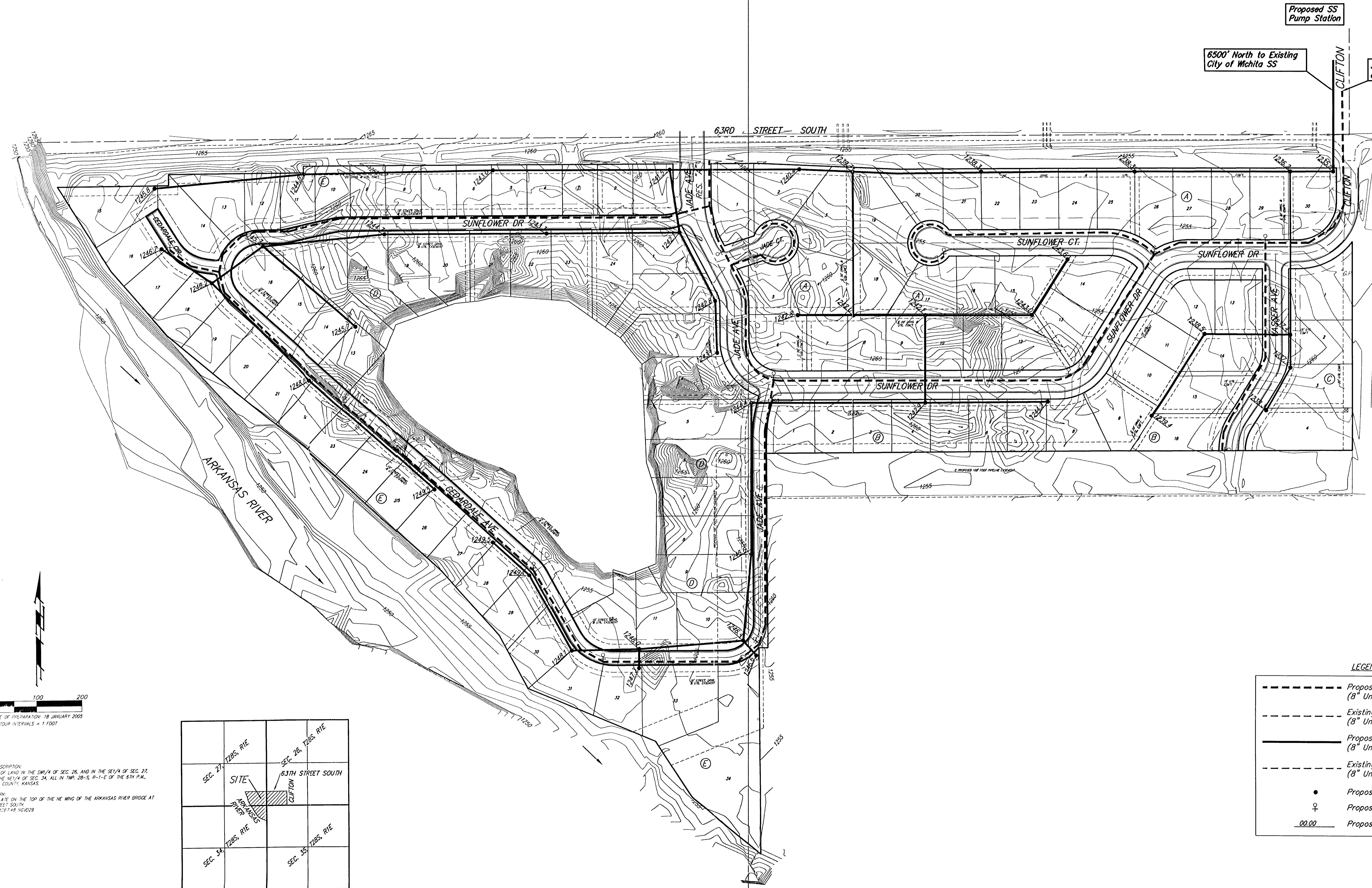


UTILITY PLAN

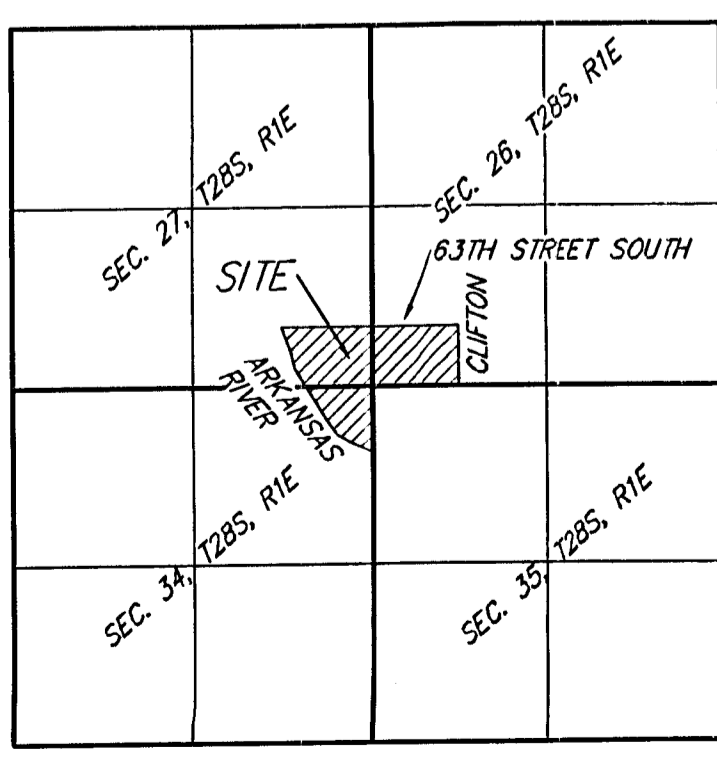
CLIFTON COVE ADDITION

SEDGWICK COUNTY, KANSAS



LEGAL DESCRIPTION:
A TRACT OF LAND IN THE SW1/4 OF SEC. 26, AND IN THE SE1/4 OF SEC. 27,
AND IN THE NE1/4 OF SEC. 34, ALL IN TWP. 28-S, R-1-E OF THE 6TH P.M.,
SEDGWICK COUNTY, KANSAS.

BENCHMARK:
SPRINKER PLATE ON THE TOP OF THE NE WING OF THE ARKANSAS RIVER BRIDGE AT
63RD STREET SOUTH
ELEV. = 1267.49 NGVD29



LEGEND

	Proposed Water Line (8" Unless Noted Otherwise)
	Existing Water Line (8" Unless Noted Otherwise)
	Proposed Sanitary Sewer Line (8" Unless Noted Otherwise)
	Existing Sanitary Sewer Line (8" Unless Noted Otherwise)
	Proposed Sanitary Sewer Manhole
	Proposed Fire Hydrant
	Proposed Sanitary Sewer Flow