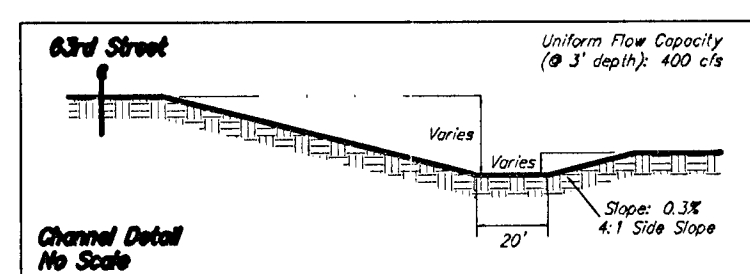
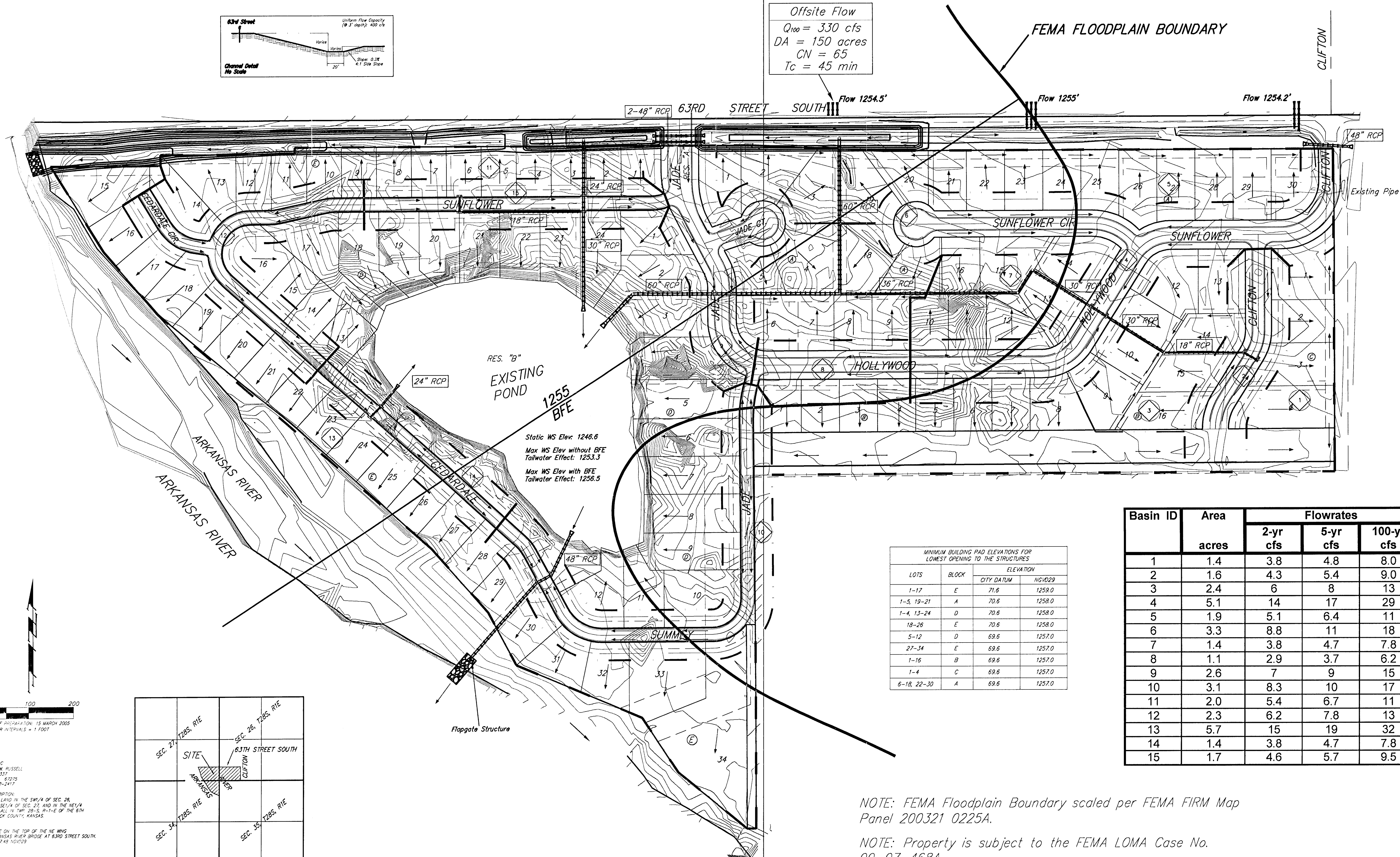


# DRAINAGE PLAN CLIFTON COVE ADDITION SEDGWICK COUNTY, KANSAS



Offsite Flow  
 $Q_{100} = 330$  cfs  
 $DA = 150$  acres  
 $CN = 65$   
 $T_c = 45$  min

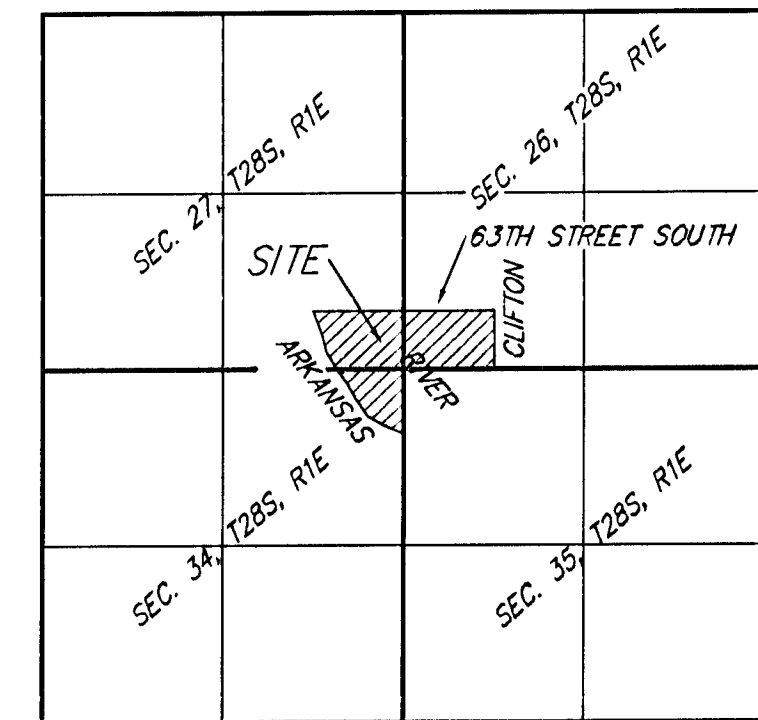
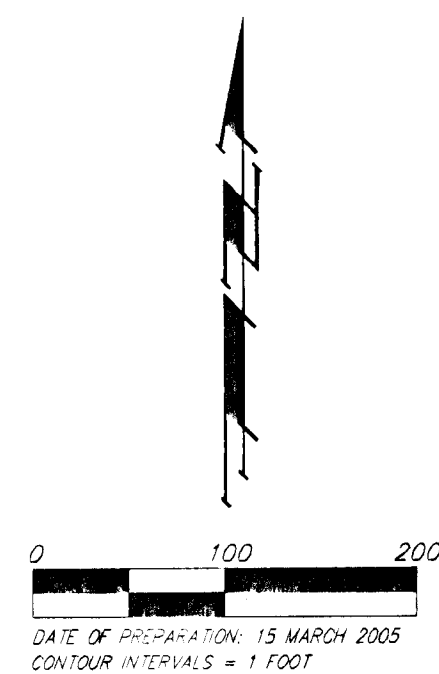


RES. "B"  
 EXISTING POND  
 1255 BFE  
 Static WS Elev. 1246.6  
 Max WS Elev without BFE  
 Tailwater Effect: 1253.3  
 Max WS Elev with BFE  
 Tailwater Effect: 1256.5

MINIMUM BUILDING PAD ELEVATIONS FOR  
 LOWEST OPENING TO THE STRUCTURES

LOTS	BLOCK	ELEVATION	
		CITY DATUM	NGVD29
1-17	E	71.6	1259.0
1-5, 19-21	A	70.6	1258.0
1-4, 13-24	D	70.6	1258.0
18-26	E	70.6	1258.0
5-12	D	69.6	1257.0
27-34	E	69.6	1257.0
1-16	B	69.6	1257.0
1-4	C	69.6	1257.0
6-18, 22-30	A	69.6	1257.0

Basin ID	Area acres	Flowrates		
		2-yr cfs	5-yr cfs	100-yr cfs
1	1.4	3.8	4.8	8.0
2	1.6	4.3	5.4	9.0
3	2.4	6	8	13
4	5.1	14	17	29
5	1.9	5.1	6.4	11
6	3.3	8.8	11	18
7	1.4	3.8	4.7	7.8
8	1.1	2.9	3.7	6.2
9	2.6	7	9	15
10	3.1	8.3	10	17
11	2.0	5.4	6.7	11
12	2.3	6.2	7.8	13
13	5.7	15	19	32
14	1.4	3.8	4.7	7.8
15	1.7	4.6	5.7	9.5



OWNER:  
 CATWOOD, LLC  
 ATTN: JEFF RUSSELL  
 P.O. BOX 75337  
 MOHAWK, MO 63278  
 PH: 316-222-2417

LEGAL DESCRIPTION:  
 A TRACT OF LAND IN THE SW 1/4 OF SEC. 28,  
 AND IN THE SE 1/4 OF SEC. 27, AND IN THE NE 1/4  
 OF SEC. 34, ALL IN TWP. 28-S, R-1-E OF THE 6TH  
 P.M., SEDGWICK COUNTY, KANSAS.

BENCHMARK:  
 BENCHMARK PLATE ON THE TOP OF THE NE WING  
 OF THE ARKANSAS RIVER BRIDGE AT 63RD STREET SOUTH.  
 ELEV. = 1067.45 NGVD29

NOTE: FEMA Floodplain Boundary scaled per FEMA FIRM Map  
 Panel 200321 0225A.

NOTE: Property is subject to the FEMA LOMA Case No.  
 00-07-468A.