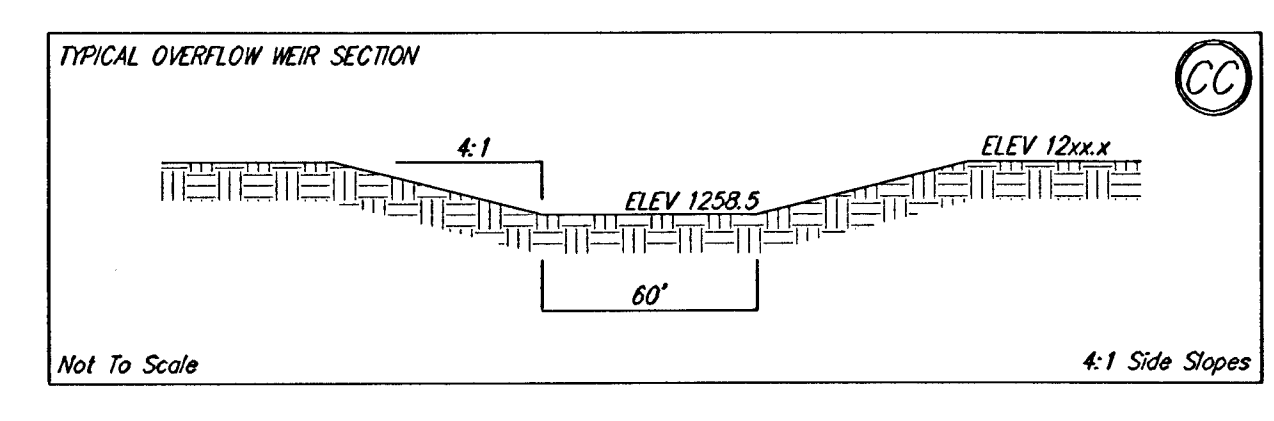
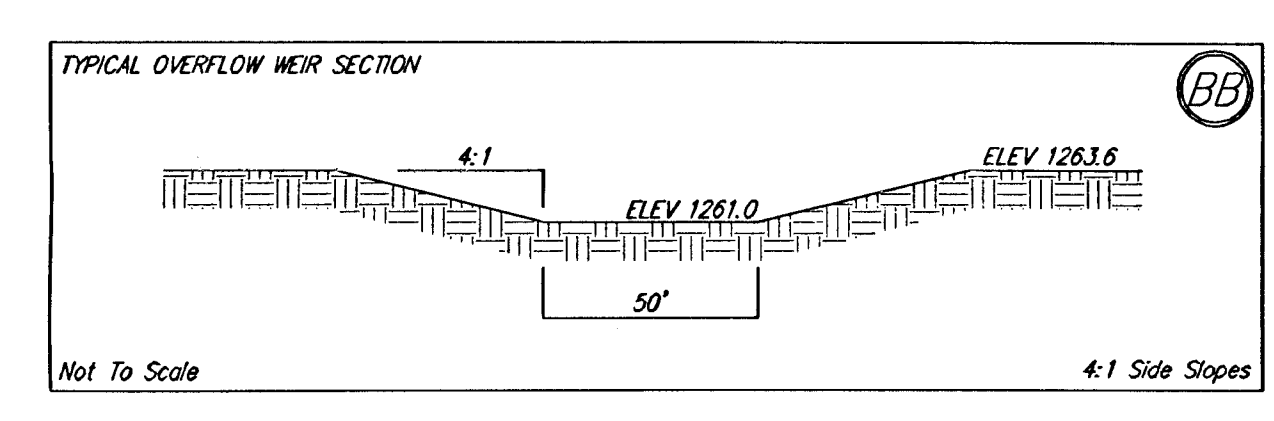
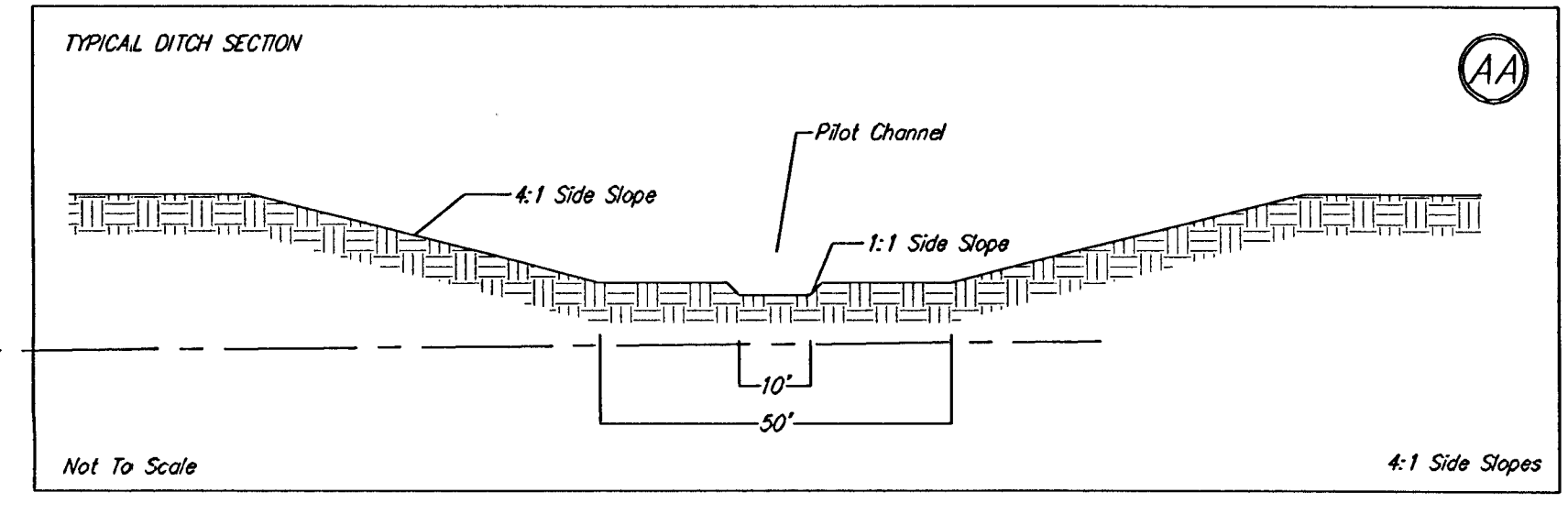
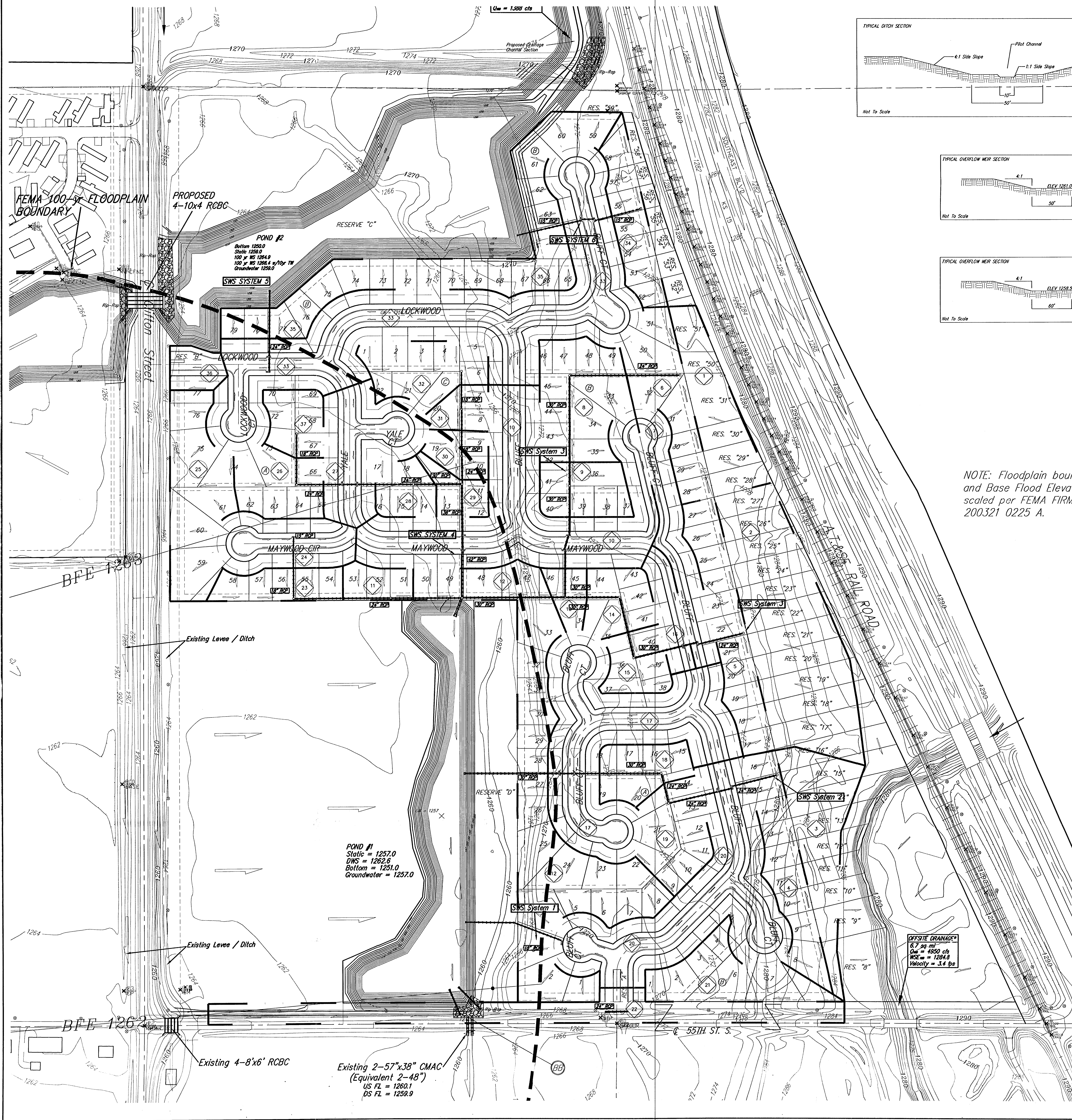


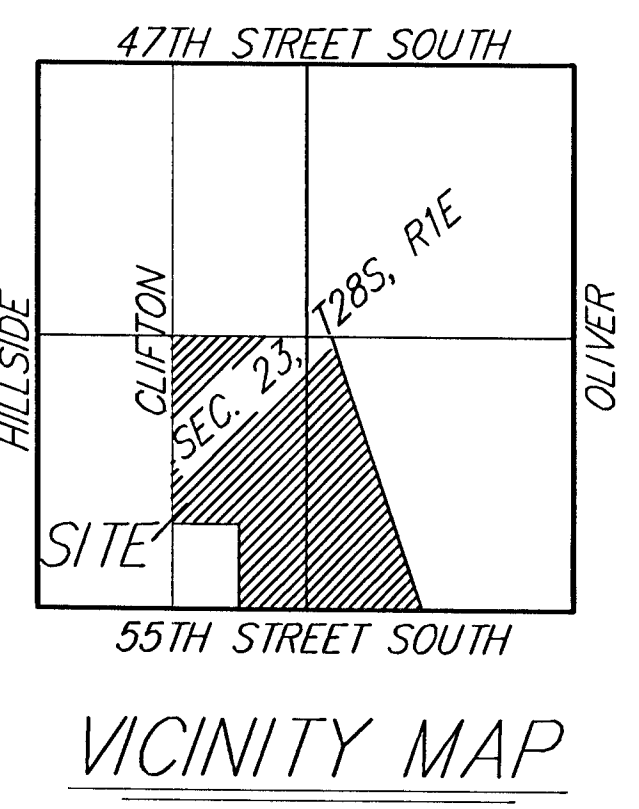
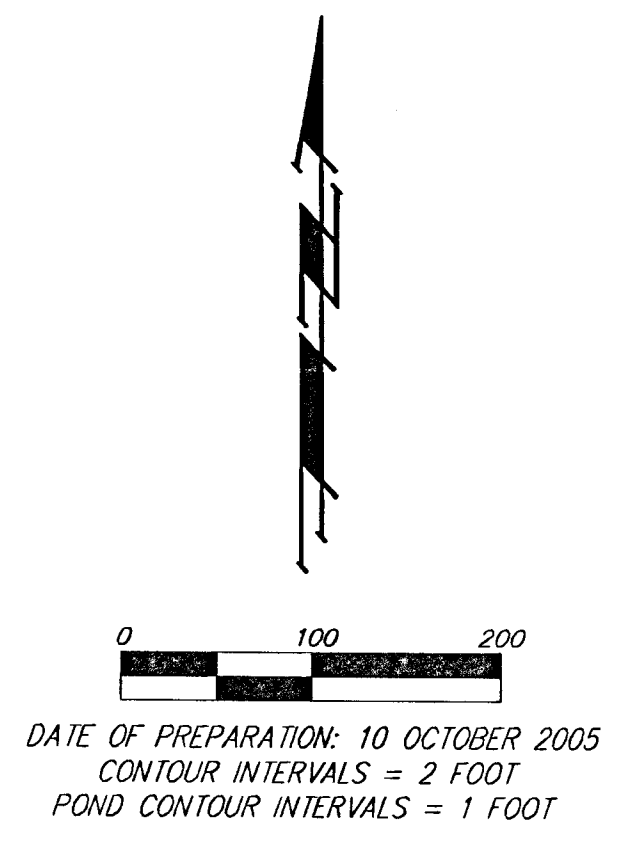
# DRAINAGE PLAN

## CLIFTON HEIGHTS ADDITION

### WICHITA, SEDGWICK COUNTY, KANSAS



NOTE: Floodplain boundaries and Base Flood Elevations scaled per FEMA FIRM 200321 0225 A.



\*NOTE: Offsite hydraulic data calculations per 55th Street Bridge Plans obtained from Sedgwick County Public Works Department.