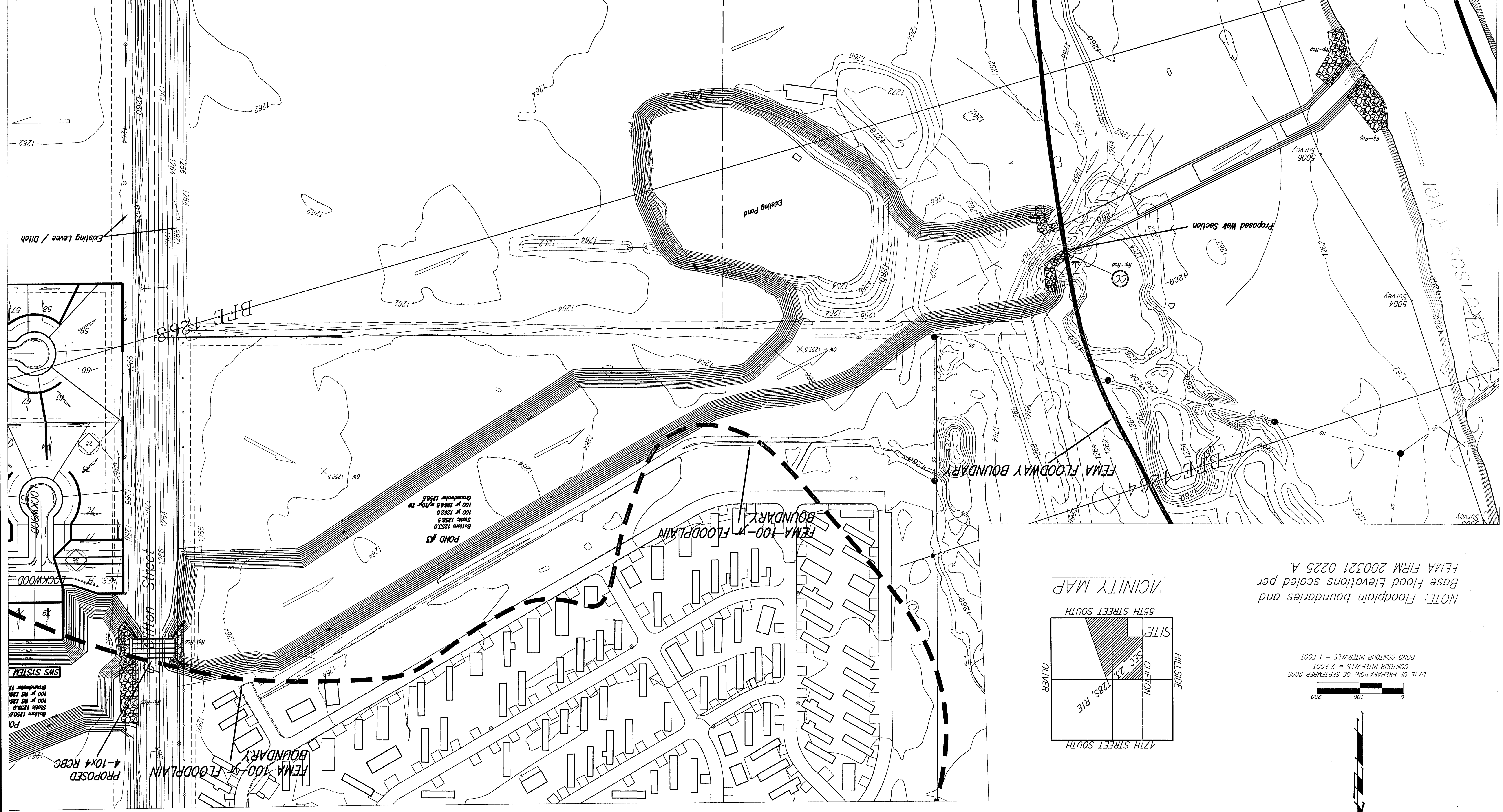
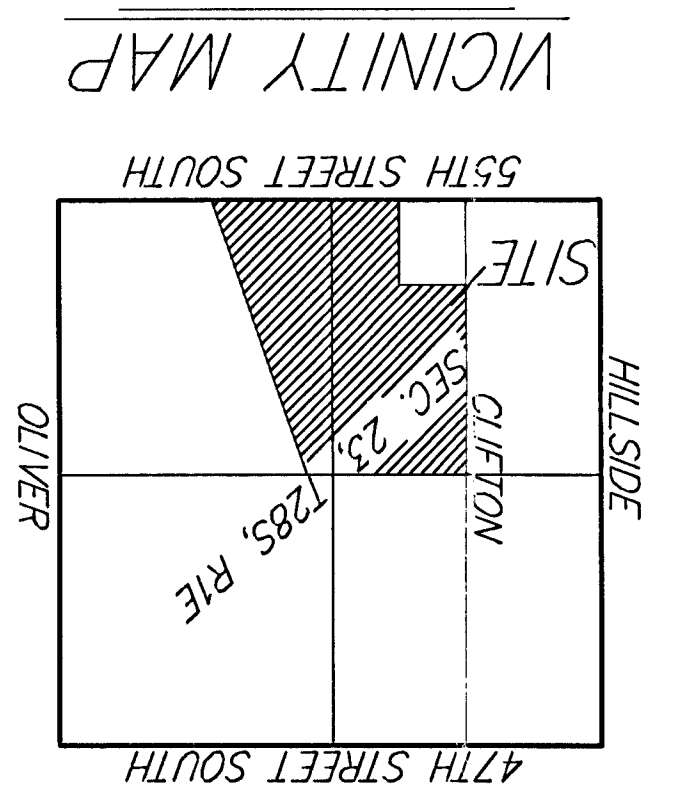


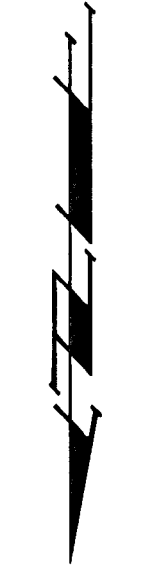
# DRAINAGE PLAN - POND SYSTEM EXHIBIT CLIFTON HEIGHTS ADDITION WICHITA, SEDGWICK COUNTY, KANSAS



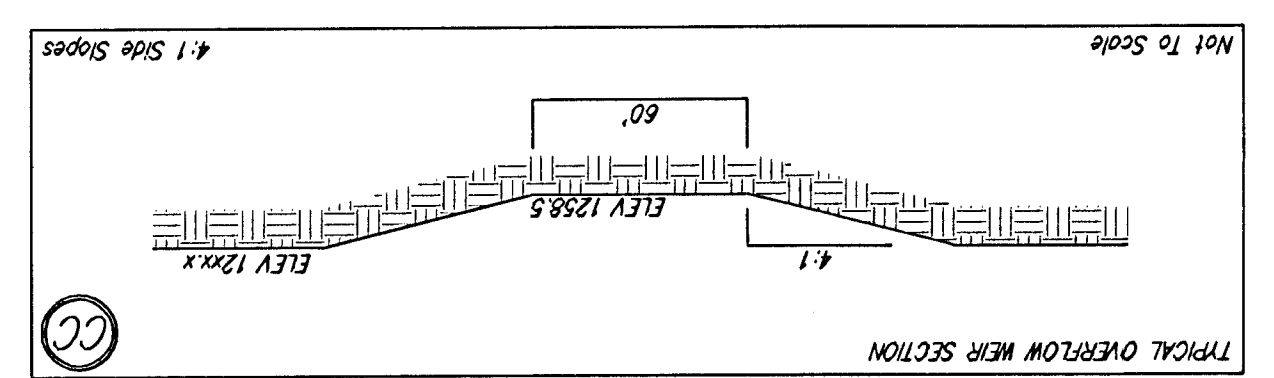
NOTE: Floodplain boundaries and Base Flood Elevations scaled per FEMA FIRM 200321 0225 A.



DATE OF PREPARATION: 06 SEPTEMBER 2005  
CONTOUR INTERVALS = 2 FOOT  
POND CONTOUR INTERVALS = 1 FOOT



NOTE: Existing Contours are 2 ft intervals. Proposed Contours are 1ft intervals.



**B** Baughman  
ENGINEERING & SURVEYING | PLANNING | LANDSCAPE ARCHITECTURE  
315 E. WILSON, SUITE 6211 | WICHITA, KS 67211 | P 316.262.2711 | F 316.262.0149  
REVISED 18 NOV 2005  
10 OCTOBER 2005  
Baughman Company, P.A.