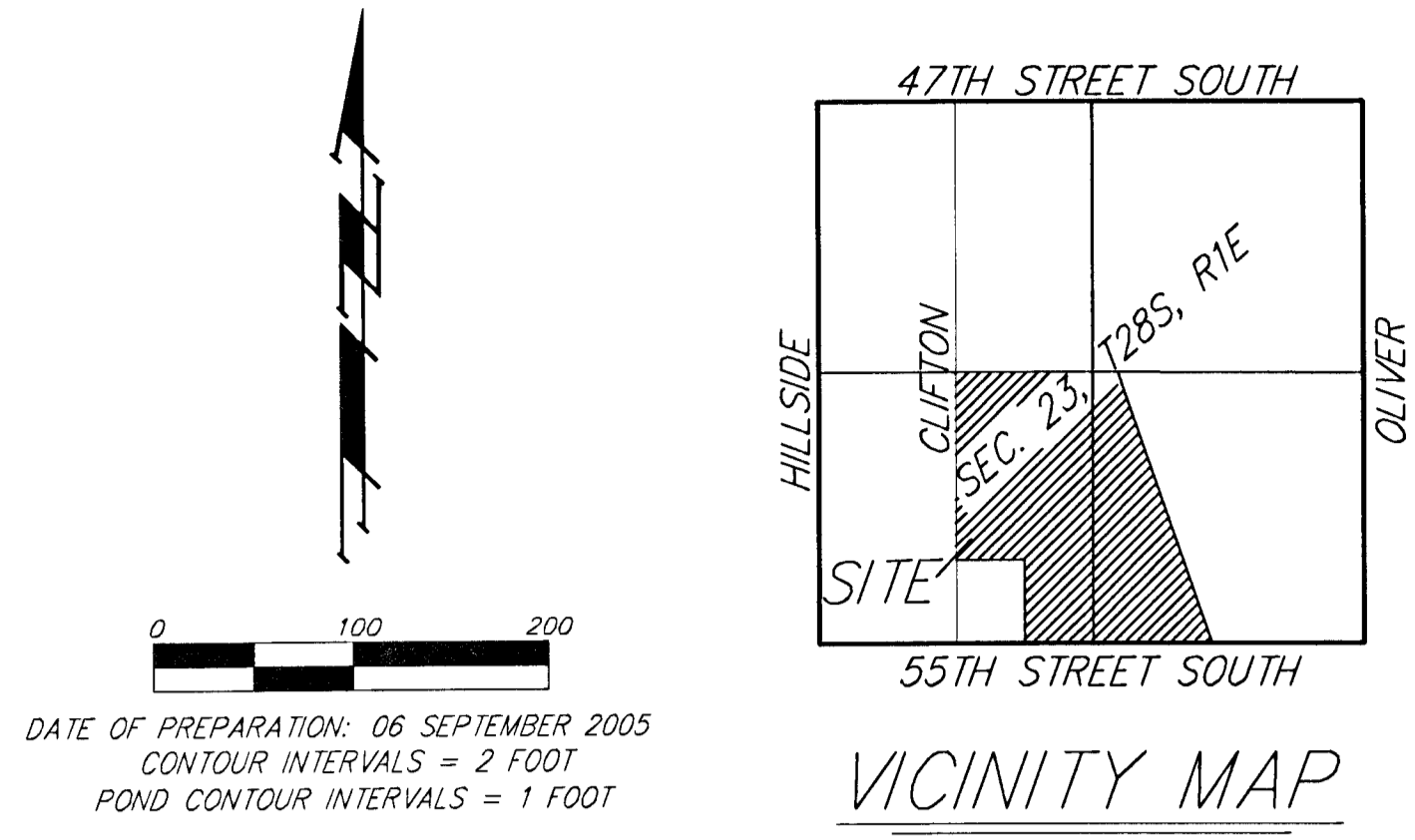


DRAINAGE PLAN - POND SYSTEM EXHIBIT

CLIFTON HEIGHTS ADDITION

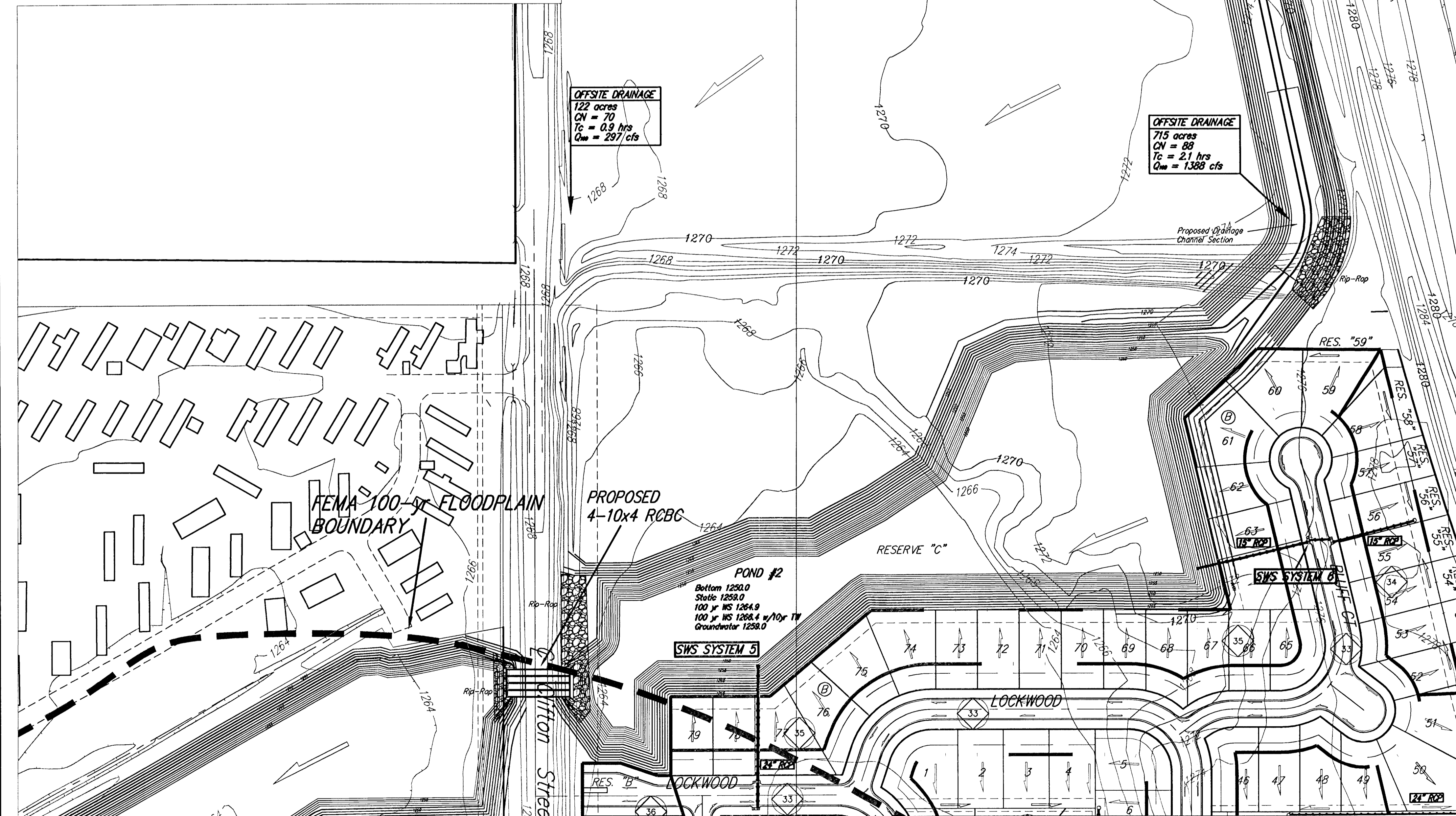
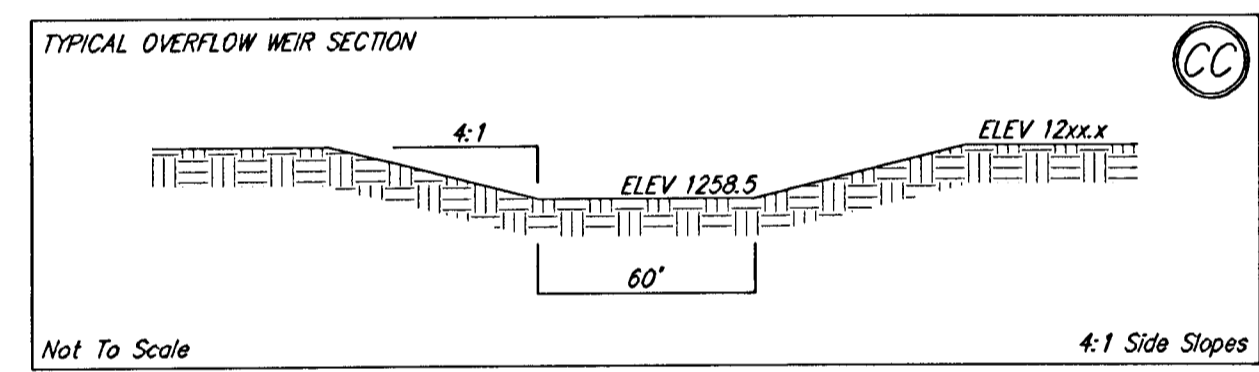
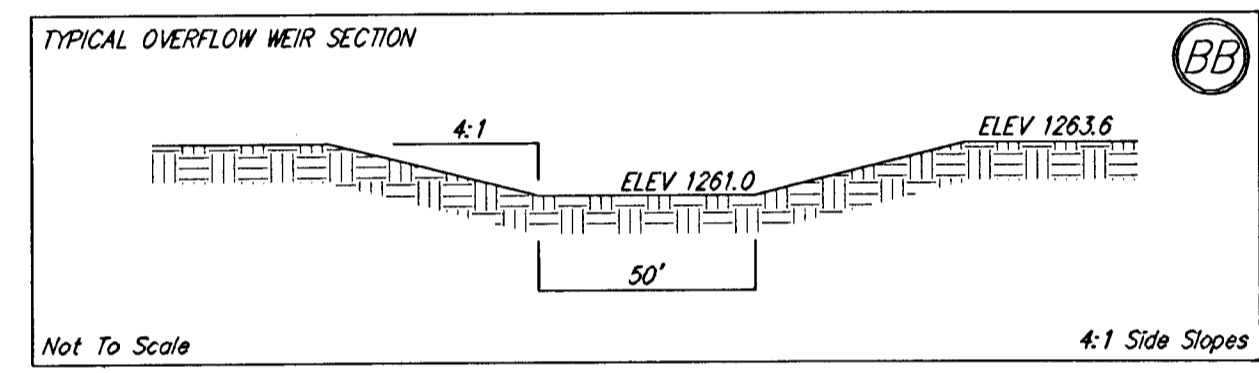
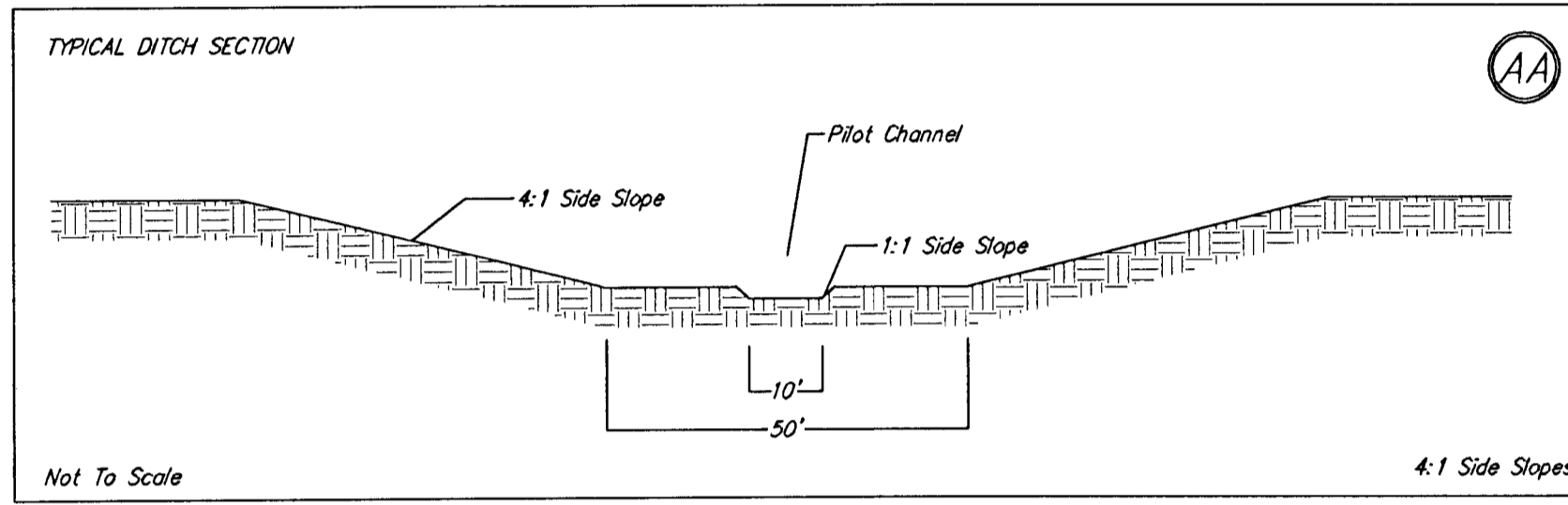
WICHITA, SEDGWICK COUNTY, KANSAS



DATE OF PREPARATION: 06 SEPTEMBER 2005
 CONTOUR INTERVALS = 2 FOOT
 POND CONTOUR INTERVALS = 1 FOOT

NOTE: Floodplain boundaries and Base Flood Elevations scaled per FEMA FIRM 200321 0225 A.

NOTE: Existing Contours are 2 ft intervals. Proposed Contours are 1ft intervals.



19 OCTOBER 2005