
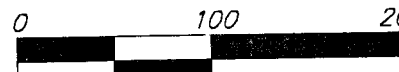
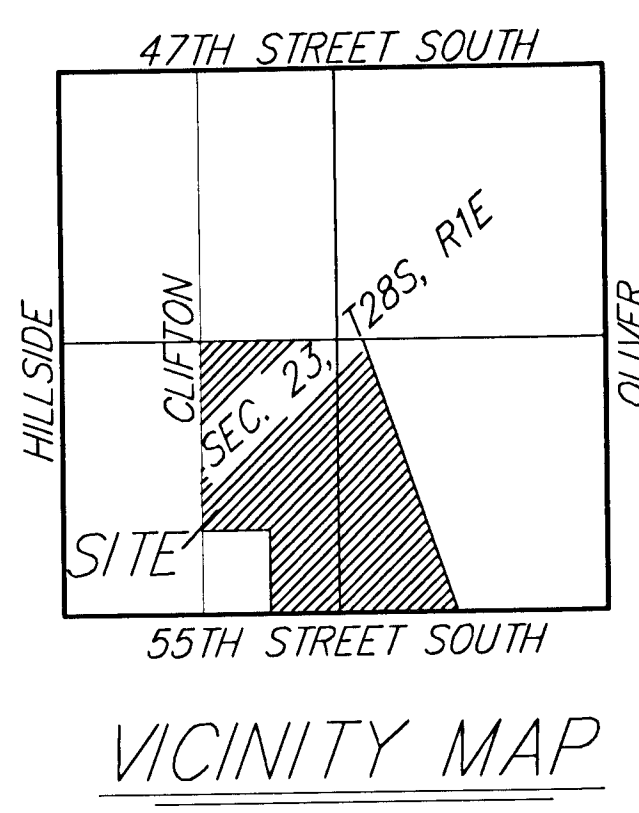


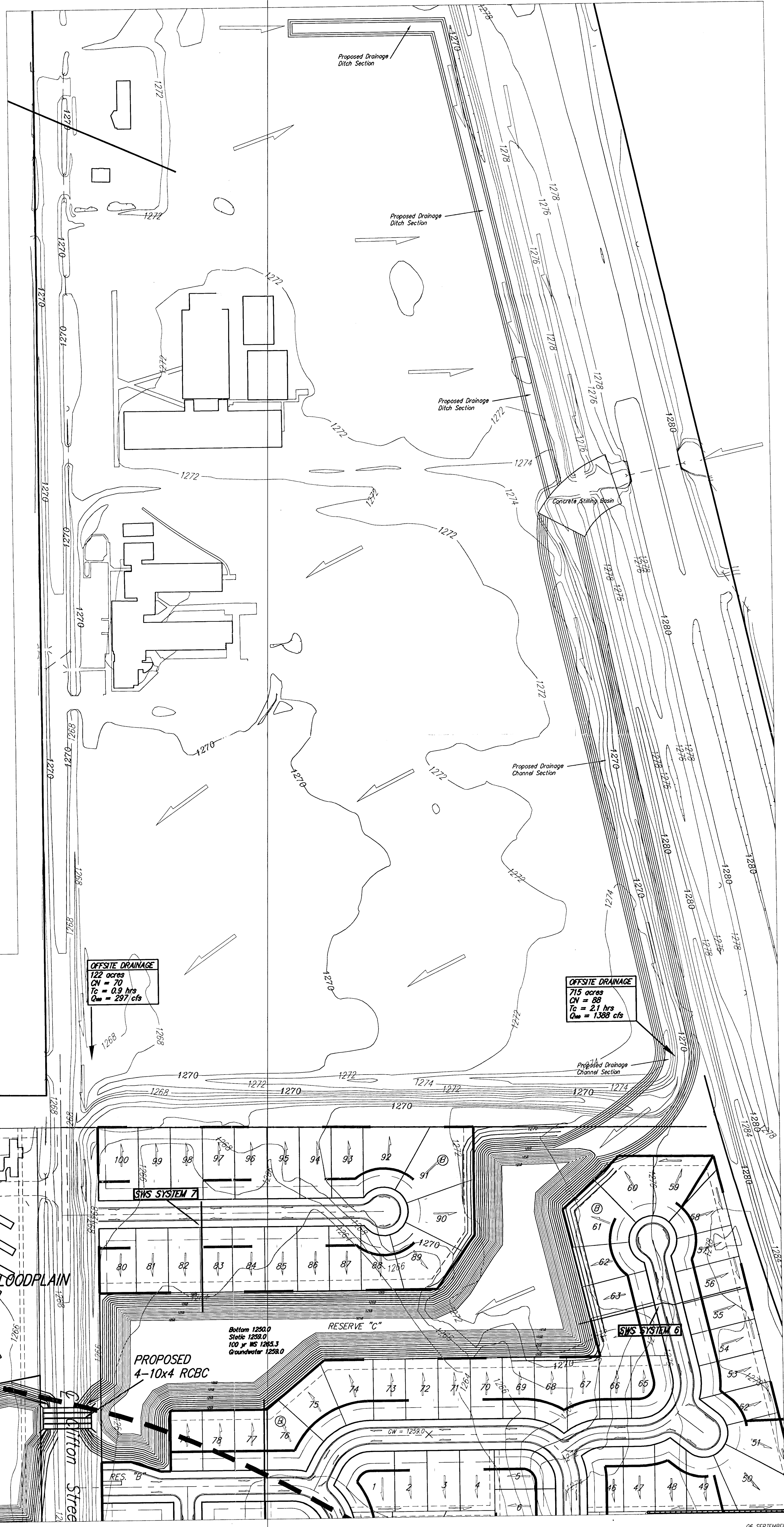
DRAINAGE CONCEPT - POND SYSTEM EXHIBIT
CLIFTON HEIGHTS ADDITION
 WICHITA, SEDGWICK COUNTY, KANSAS



 DATE OF PREPARATION: 06 SEPTEMBER 2005
 CONTOUR INTERVALS = 2 FOOT
 POND CONTOUR INTERVALS = 1 FOOT



NOTE: Floodplain boundaries and Base Flood Elevations scaled per FEMA FIRM 200321 0225 A.

NOTE: Size and Dimensions of Channel Section to be determined upon final calculations on Drainage Plan.



OFFSITE DRAINAGE
 122 acres
 CN = 70
 Tc = 0.9 hrs
 Q₁₀₀ = 297 cfs

OFFSITE DRAINAGE
 715 acres
 CN = 88
 Tc = 2.1 hrs
 Q₁₀₀ = 1388 cfs

