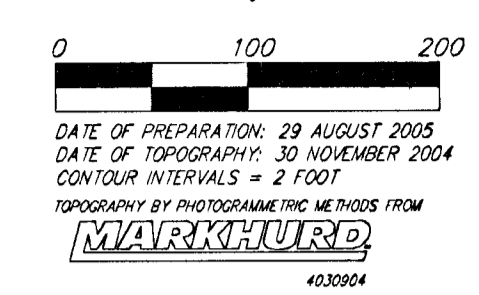


PRELIMINARY PLAT
CLIFTON HEIGHTS ADDITION
 WICHITA, SEDGWICK COUNTY, KANSAS



DATE OF PREPARATION: 29 AUGUST 2005
 DATE OF REVISION: 31 AUGUST 2004
 CONTOUR INTERVALS = 2 FEET
 PREPARED BY: J. RUSSELL COMMUNITIES

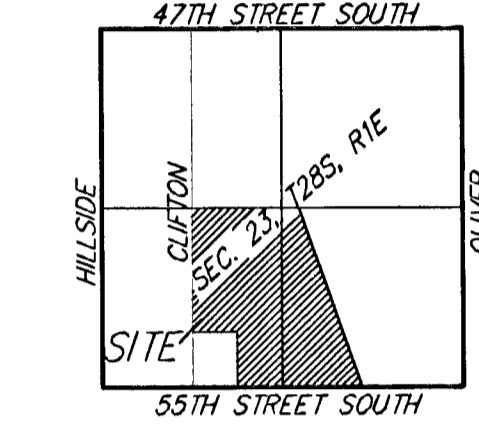
OWNER/DEVELOPER:
 J.R.C. LLC
 PO BOX 16337
 WICHITA, KS 67215
 722-2417

LEGAL DESCRIPTION:
 A TRACT OF LAND IN THE SW 1/4 AND SE 1/4 OF SECTION 21, TWP. 28-S, R-1-E OF THE 6TH P.M., SEDGWICK COUNTY, KANSAS.

BENCHMARK:
 CITY OF WICHITA BENCHMARK DISC, SW CORNER OF CLIFTON AND 55TH ST. S., SOUTHWEST CORNER OF PLOT, ON TOP OF CURB/GARAGE AT THE WEST END.
 ELEV. = 1283.29 NGVD29

• = #1 REBAR W/ "BAUGHMAN" CAP (FOUND)
 • = #4 REBAR W/ "BAUGHMAN" CAP (SET)
 • = #5 REBAR W/ "CLASER" CAP (FOUND)
 ○ = 1" IRON (FOUND)
 ○ = 1/2" IRON (FOUND)

(M) = MEASURED
 (D) = DESCRIBED
 (P) = PLATTED
 (C) = CALCULATED

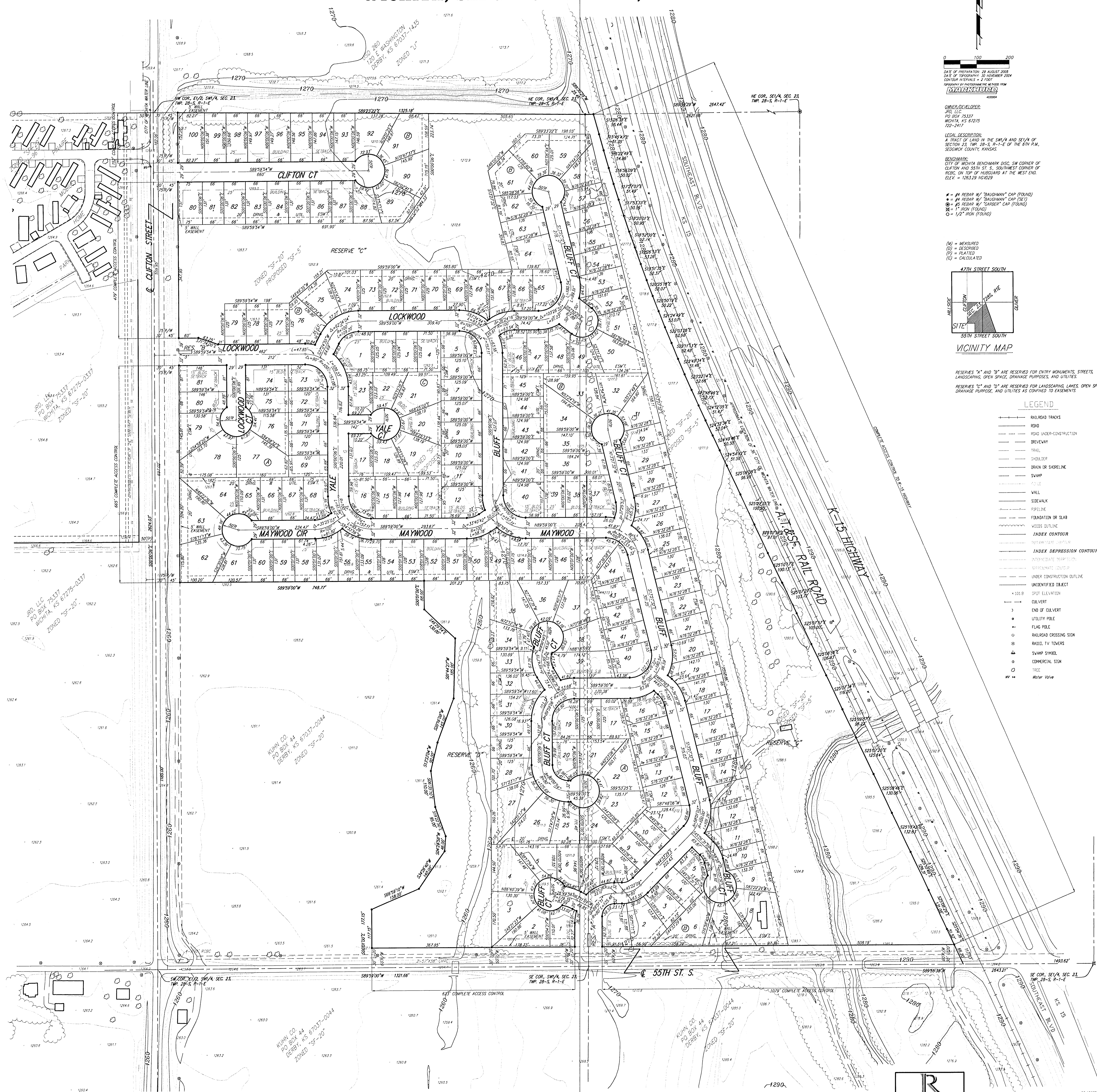


VICINITY MAP

RESERVES "A" AND "B" ARE RESERVED FOR ENTRY MONUMENTS, STREETS, LANDSCAPING, OPEN SPACE, DRAINAGE PURPOSES, AND UTILITIES.
 RESERVES "C" AND "D" ARE RESERVED FOR LANDSCAPING, LAKES, OPEN SPACE, DRAINAGE PURPOSES, AND UTILITIES AS CONFIRMED TO EASEMENTS.

LEGEND

- RAILROAD TRACKS
- ROAD
- ROAD UNDER CONSTRUCTION
- DRIVEWAY
- TRAIL
- SHOULDER
- DRAIN OR SHORELINE
- SWAMP
- POLE
- WALL
- SIDEWALK
- PIPELINE
- FOUNDATION OR SLAB
- WOODS OUTLINE
- INDEX CONTOUR
- INTERMEDIATE CONTOUR
- INDEX DEPRESSION CONTOUR
- APPROXIMATE TIEP POINT
- APPROXIMATE LEVEL
- UNDER CONSTRUCTION OUTLINE
- UNIDENTIFIED OBJECT
- 101.8 SPOT ELEVATION
- CULVERT
- END OF CULVERT
- UTILITY POLE
- FLAG POLE
- RAILROAD CROSSING SIGN
- RAILROAD TOWER
- SWAMP SYMBOL
- COMMERCIAL SIGN
- TREE
- Water Valve



J. RUSSELL COMMUNITIES

Baughman Company, P.A.
 315 Ellis St., Wichita, KS 67201 F 316-262-7171 F 316-262-0199
 AN AFFILIATE OF J. RUSSELL COMMUNITIES, L.P. (A LIMITED LIABILITY PARTNERSHIP)
 FULLY LICENSED SURVEYORS AND LANDSCAPE ARCHITECTS

29 AUGUST 2005