

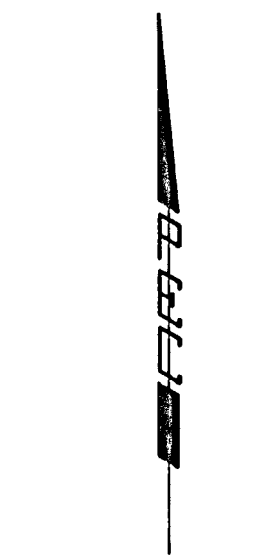
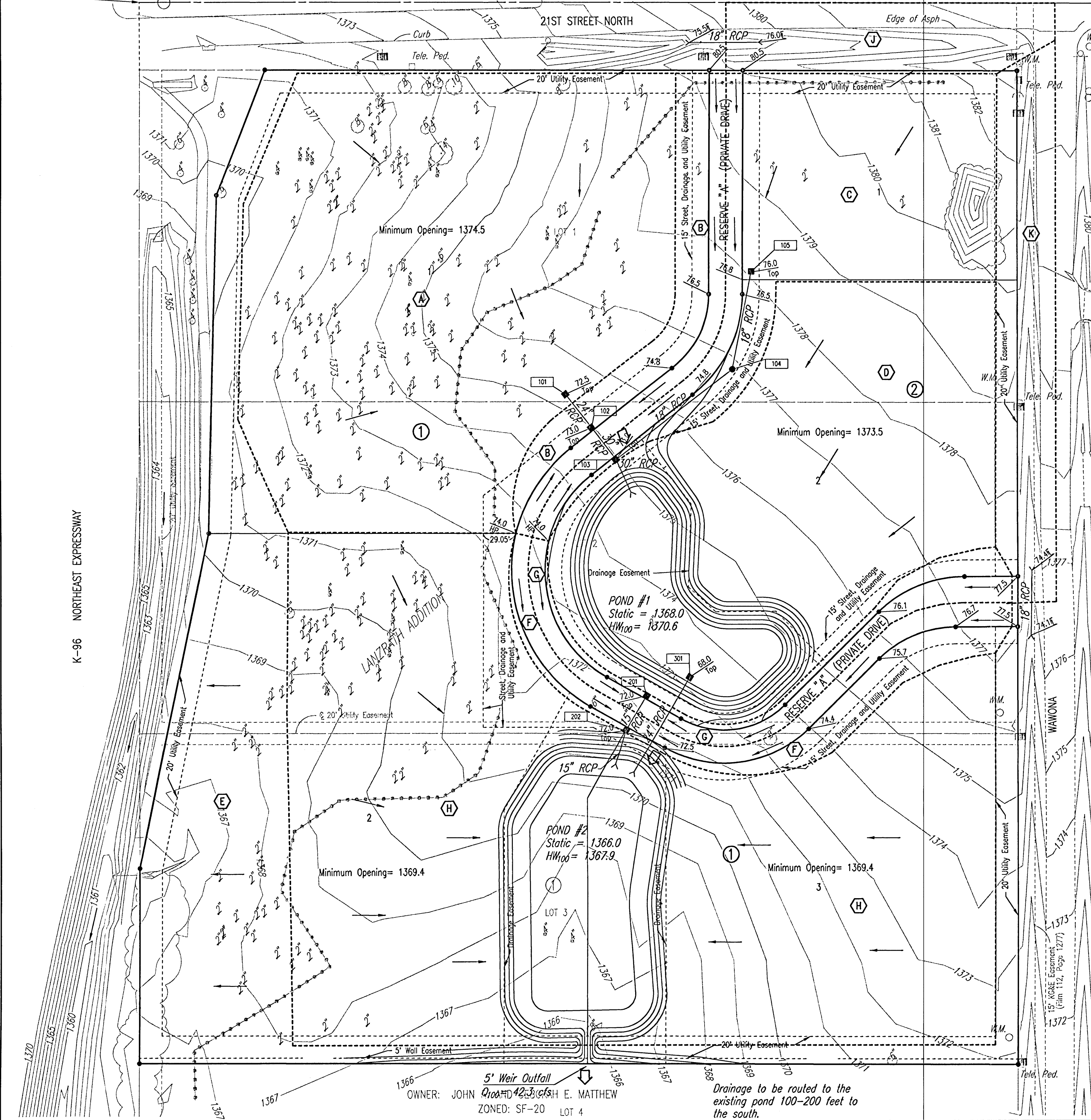
NW Corner, NE 1/4,
Sec. 10, T27S, R2E
of the 6th P.M.

OWNER: MESSIAH BAPTIST CHURCH
ZONED: SF-20

DRAINAGE PLAN

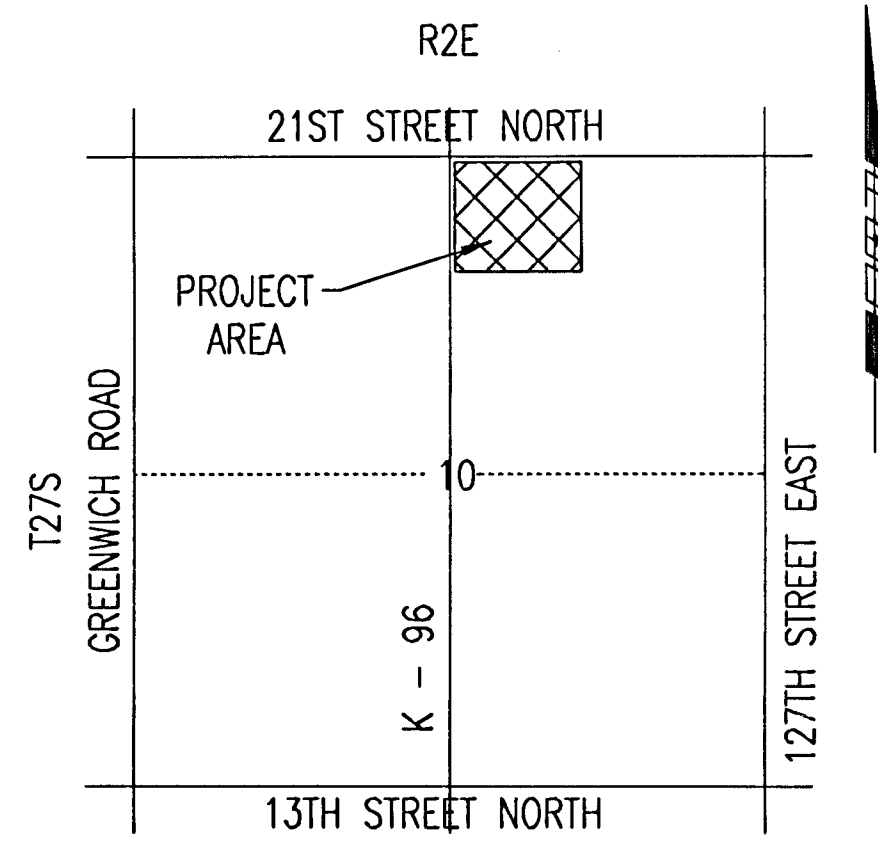
THE COLLECTIVE

AN ADDITION TO WICHITA, SEDGWICK COUNTY, KANSAS



SCALE: 1" = 50'

● = 3/4" IRON PIPE W/PEC CAP UNLESS OTHERWISE NOTED



B.M. - CITY OF WICHITA BRASS DISC AT THE SOUTHWEST CORNER OF 135TH STREET WEST AND 21ST STREET NORTH.
ELEV. = 1356.59 N.G.V.D.

LEGEND

- BASIN IDENTIFIER
- BASIN BOUNDARY
- MAJOR STORM WATER OVERFLOW
- MINOR STORM WATER FLOW
- NODE IDENTIFIER
- STORM SEWER AND INLET
- STORM SEWER AND MANHOLE
- SPOT ELEVATION
- HIGH POINT ELEVATION
- MATCH EXISTING ELEVATION

SEE SUPPORTING CALCULATIONS FOR HYDROLOGY.

If concentrated storm water runoff is directed to the K-96 drainage ditch, it will be discharged in a flume or storm sewer system with adequate erosion protection.

DSNR, S&D, OPER. S&D, SCALE: 1"=50.00
G:\2001\01101\Admission\slong\DRAINAGE CONCEPT 08-22-2001 02:47:00 pm

K-96 NORTH EAST EXPRESSWAY

OWNER: TRINITY HIGH SCHOOL
ZONED: SF-20