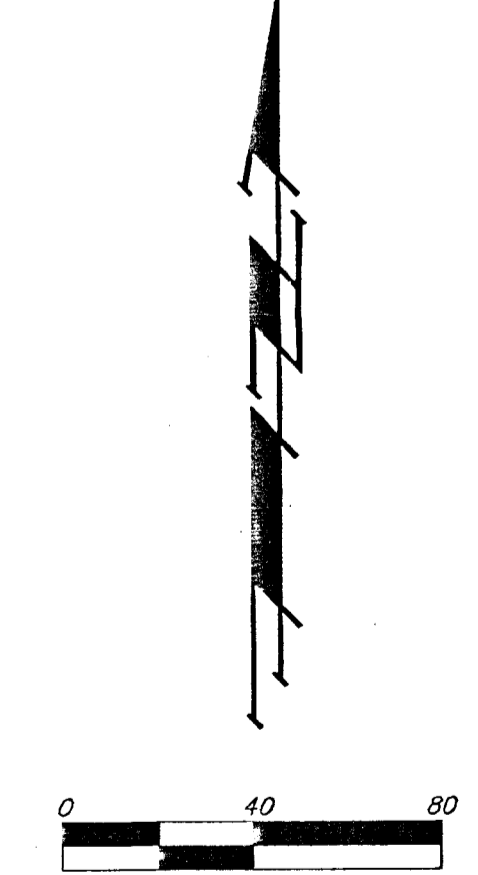
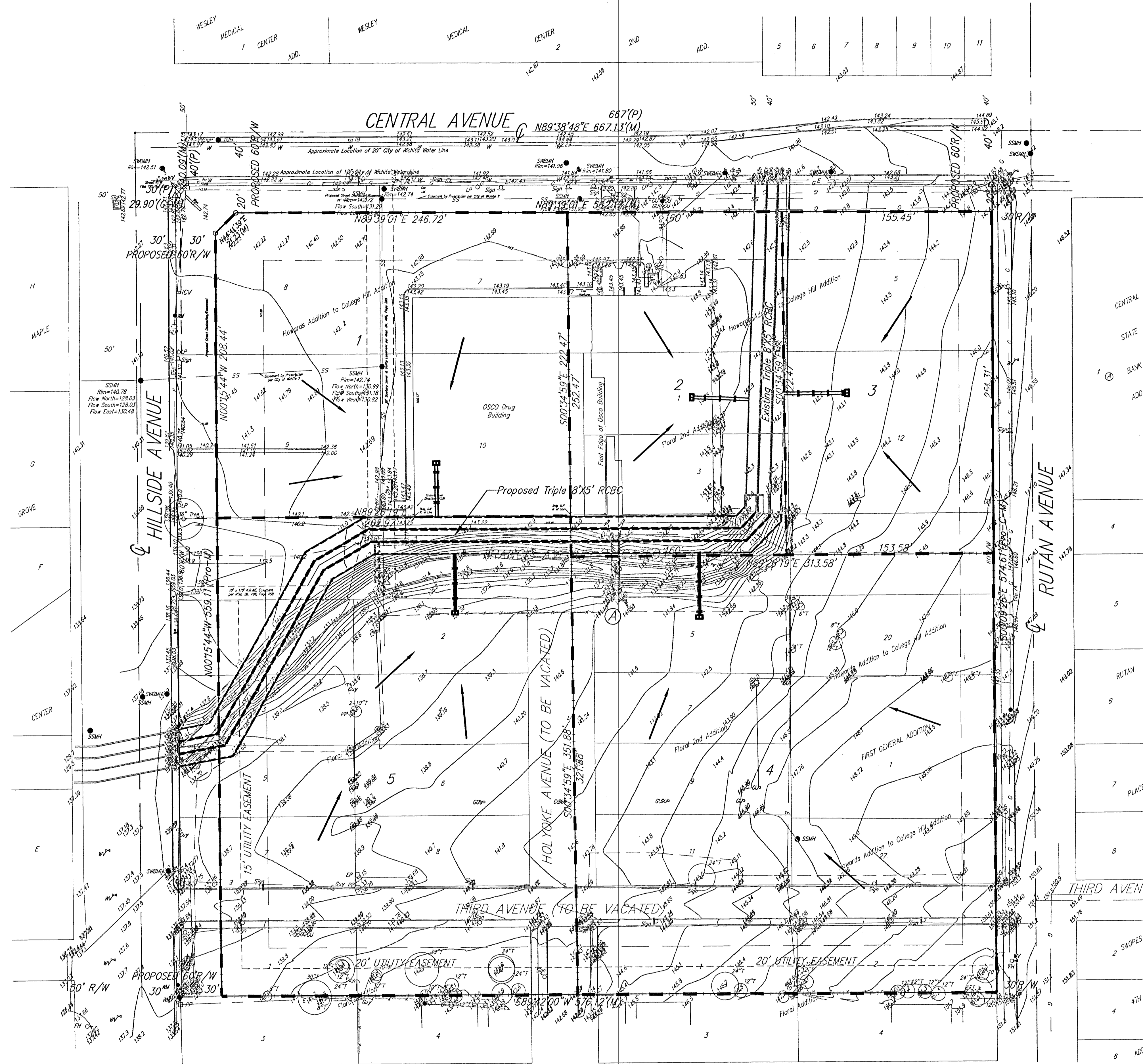


DRAINAGE PLAN COLLEGE HILL SQUARE WICHITA, SEDGWICK COUNTY, KANSAS



DATE OF PREPARATION: DECEMBER 31, 2001
DATE OF TOPOGRAPHY: DECEMBER 10, 2001
CONTOUR INTERVALS = 1 FOOT

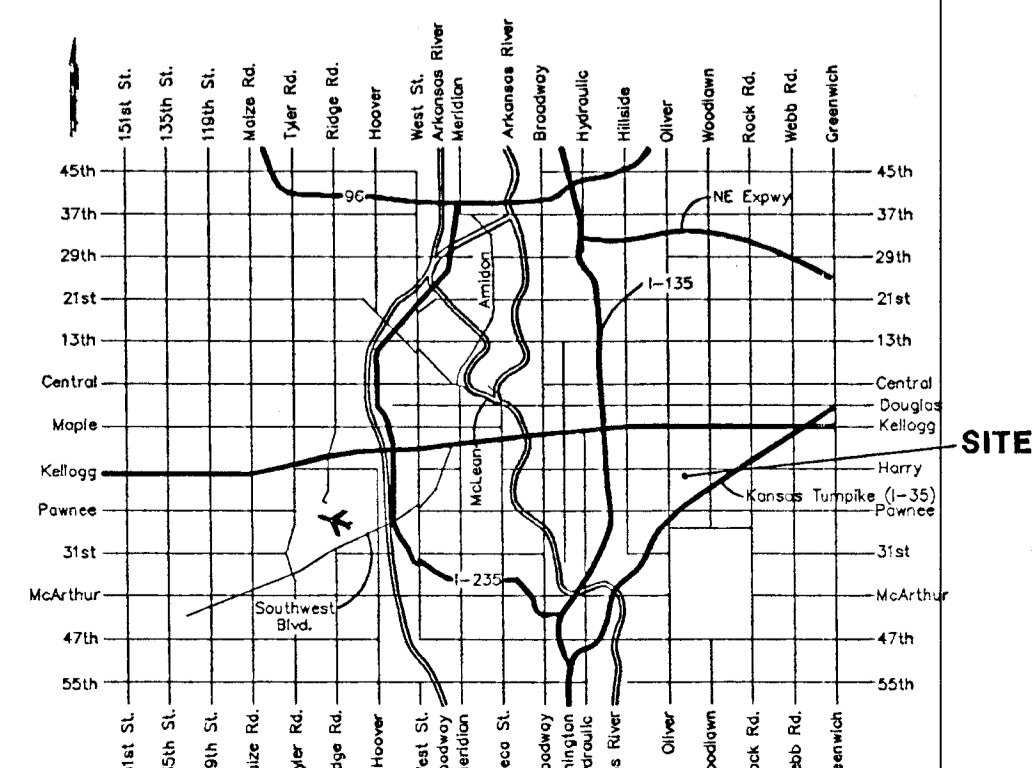
Benchmark: City of Wichita Disc on the Box of Light Pole at the SE corner of the intersection of Central and Hillside Elevation = 145.32 (City Datum)

- = FH = Fire Hydrant
- = GU = Guard Post (Ballard)
- = Guy = Guy Anchor
- = HLP = High Line Pole
- = ICV = Irrigation Control Valve - Valve Box
- = LP = Light Pole
- = PP = Power Pole
- = SigP = Signal Pole
- = Sign = Sign
- = SSMH = Sanitary Sewer Manhole
- = SWBMH = Southwestern Bell Manhole
- = TB = Traffic Box
- = TMH = Traffic Manhole
- = WM = Water Meter
- = WY = Water Valve
- = XFMR = Transformer

- = #4 REBAR W/ "BAUGHMAN" CAP (FOUND)
- = #4 REBAR W/ "BAUGHMAN" CAP (SET)
- = #4 REBAR W/ "TILSI" CAP (FOUND)
- = 1" IRON (FOUND)
- = 1/2" IRON (FOUND)
- = "P-K" NAIL & SHINER IN STUMP (FOUND)
- = BOLT (FOUND)
- = RAILROAD SPIKE (FOUND)
- = #4 REBAR (FOUND)

- (M) = MEASURED
- (D) = DESCRIBED
- (P) = PLATTED
- (C) = CALCULATED
- (C-P) = CALCULATED PER PLATTED INFO.
- (C-D) = CALCULATED PER DEED INFO.
- (DEED) = DEED DESCRIPTION
- (C-DESC) = CALCULATED PER TRACT DESCRIPTION

Drainage Area	Area (acres)	C _s	C _m	T _s (min.)	I _s (in/hr)	I _m (in/hr)	Q _s (cfs)	Q _m (cfs)
Lot 1	1.3	0.90	0.90	15	3.83	7.37	4.5	8.8
Lot 2	0.9	0.90	0.90	15	3.83	7.37	3.1	6.0
Lot 3	0.9	0.90	0.90	15	3.83	7.37	3.1	6.0
Lot 4	2.3	0.90	0.90	15	3.83	7.37	7.9	15
Lot 5	2.1	0.90	0.90	15	3.83	7.37	7.2	14



Proposed Triple 8x5' RCBC shall be installed through Tax Incremental Financing under the City of Wichita. Each lot shall be responsible for the construction and installation of each self-serving stormwater sewer. Stormwater sewer alignments and sizes shall be determined upon site-development.