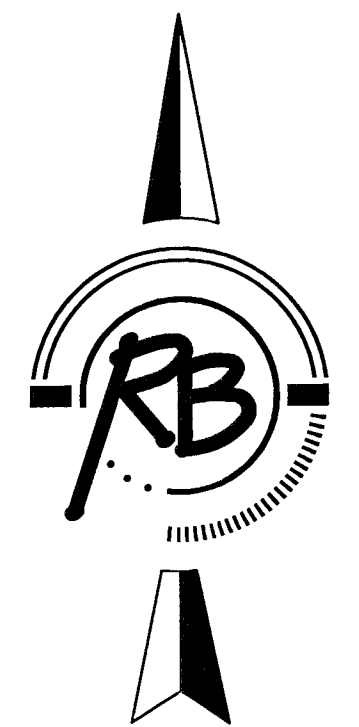
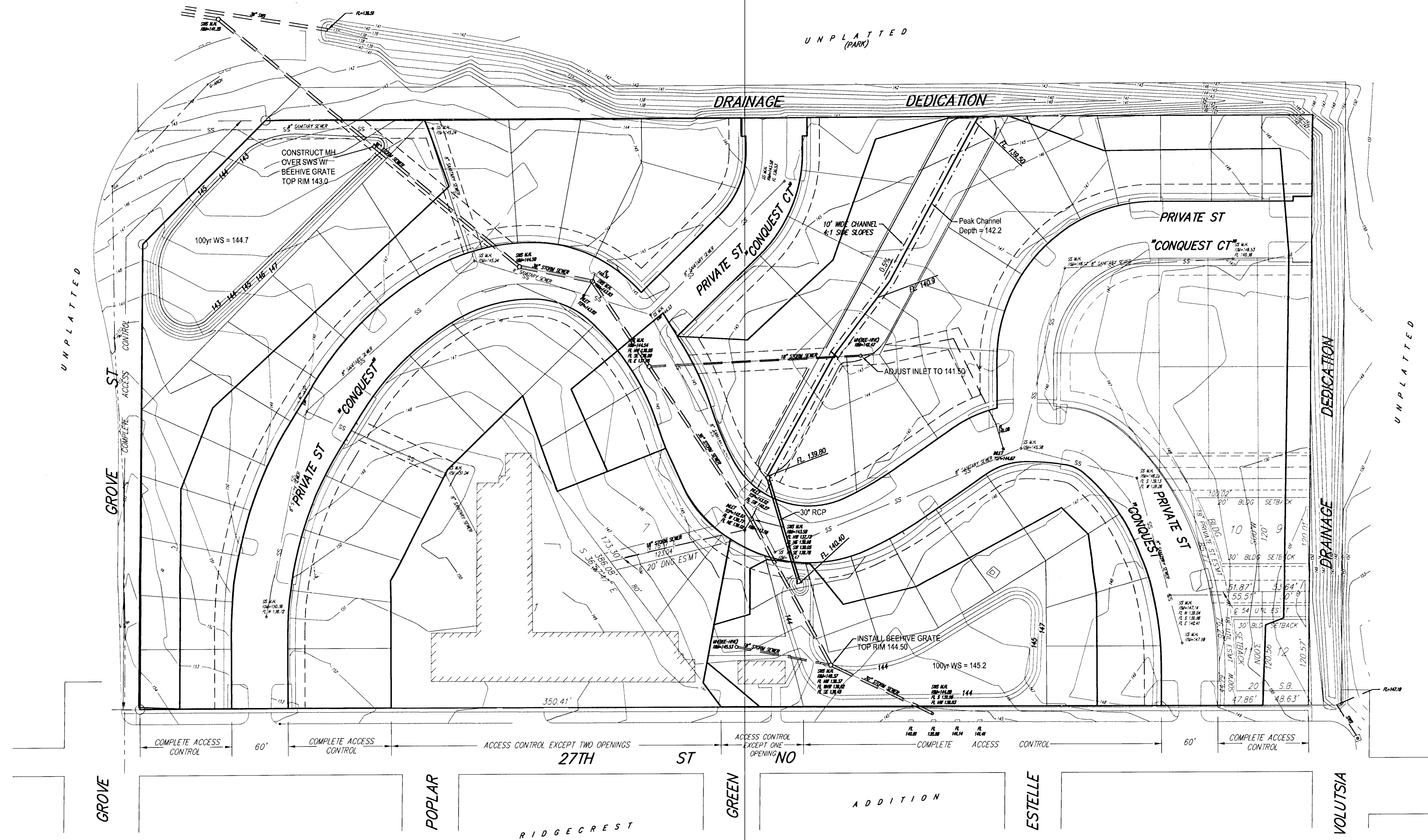
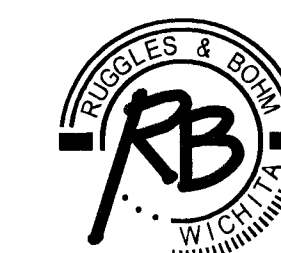


# DRAINAGE PLAN CONQUEST NORTH SECOND ADDITION

A Replat of part of Conquest North Addition  
Wichita, Sedgwick County, Kansas



See Drainage Report: August 30, 2005



**Ruggles & Bohm, P.A.**  
Engineering, Surveying, Land Planning  
924 North Main (316) 264-8008  
Wichita, Kansas 67203 (316) 264-4621 fax  
www.rbkansas.com E-mail: info@rbkansas.com