

# Preliminary Plat

## CONQUEST NORTH SECOND ADDITION

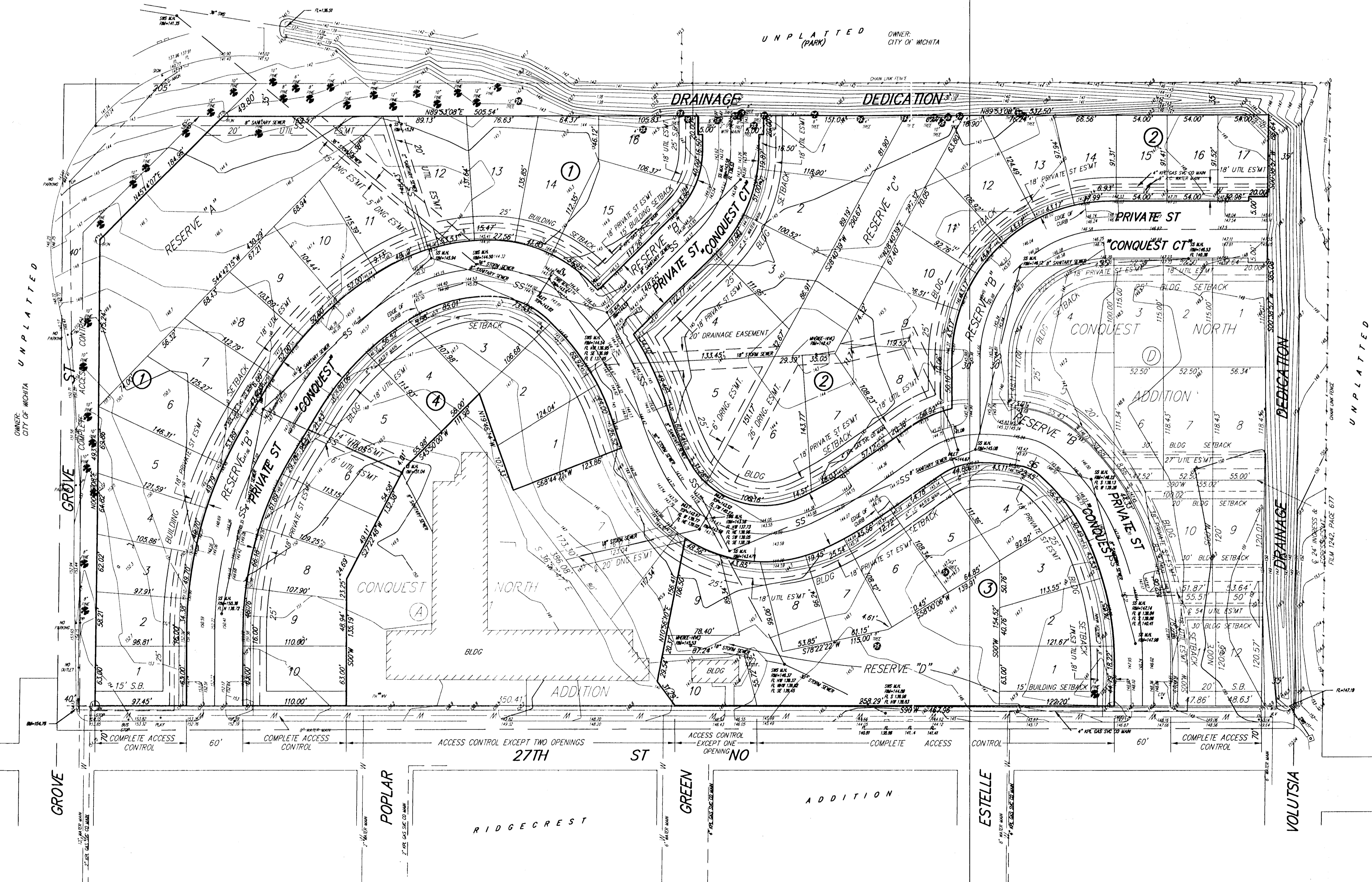
A Replat of part of Conquest North Addition  
Wichita, Sedgwick County, Kansas



1" = 60'

MINIMUM BLDG PAD ELEVATION  
FOR LOWEST OPENING INTO  
STRUCTURE FOR ALL LOTS  
ELEVATION 146 CITY DATUM  
ELEVATION 1333.4 MSL

BENCH MARK:  
CITY STANDARD DISC IN THE WEST  
PARKING OF GROVE AT THE APPROXIMATE  
CENTER-LINE OF 27TH ST. N.  
ELEVATION = 155.51 CITY DATUM  
ELEVATION = 1342.73 MSL



**LEGAL DESCRIPTION:**  
Lots 2, 3, 4, 5, 6, 9, 10, 11 and part of Lot 8, Block A; all of Block B, Block C and Reserve A; Conquest North Addition, Wichita, Sedgwick County, Kansas.

**OWNER:**  
Missouri Partners Inc.  
180 Mall Road  
Suite 1  
Hollister, Missouri 65672

**Project Director:** Randy Webb  
Ph. (417) 336-8798

**SUBDIVIDER & ENGINEER:**  
Ruggles & Bohm P.A.  
Christopher M. Bohm, P.E.

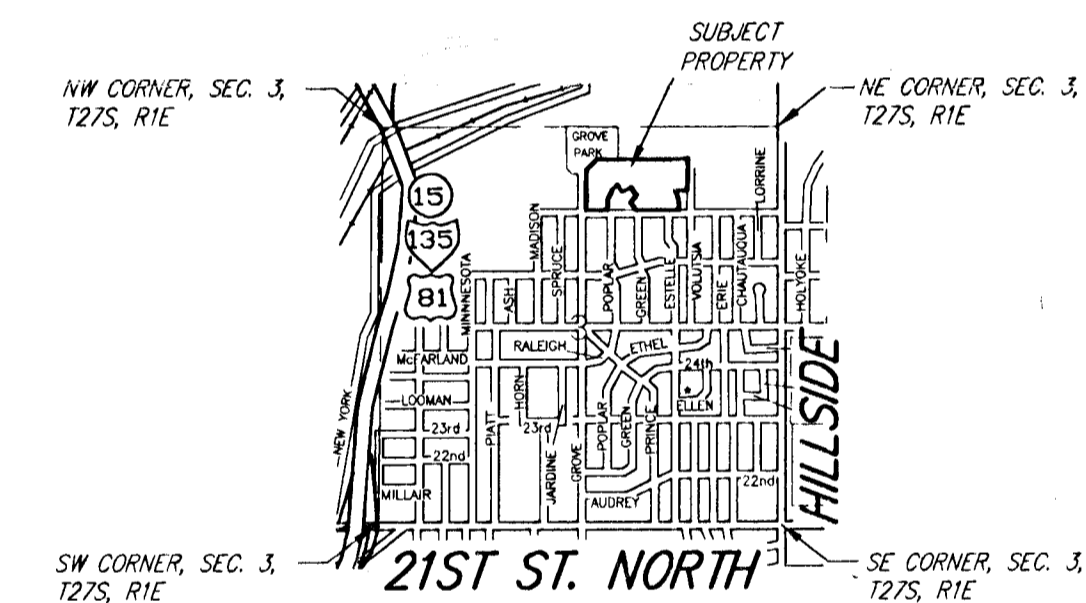
**EXISTING ZONING:**  
Subject property is zoned TF-3 (C.U.P. DP-24)  
Existing use is vacant land, except Lot 10, Block 3.

**PROPOSED ZONING:**  
TF-3

**FLOOD ZONE:**  
According to the FEMA/FIRM Community Panel No. 200328 0010 B, effective May 15, 1986; the property shown hereon is located in Zone C.

**GROSS AREA:**  
660,911.4 Sq. Ft.±  
15.17 Acres±

**DATE OF TOPOGRAPHY:**  
JULY, 2005

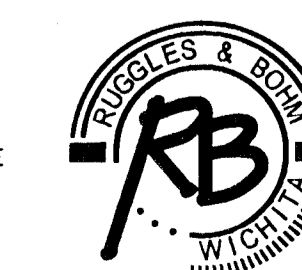


VICINITY MAP  
NOT TO SCALE

**LEGEND**

- 1" FIRE HYDRANT
- 1" WATER VAULT
- 1" STREET SIGN (TYPE SHOWN)
- 1" LIGHT POLE
- 1" TRANSFORMER
- 1" POWER POLE (NESTAR)
- 1" GUY ANCHOR
- 1" SANITARY SEWER MANHOLE (CITY OF WICHITA)
- 1" SPOT ELEVATION (DECIMAL POINT INDICATES LOCATION)
- 1" DECIDUOUS TREE (CALIPER INDICATED)
- 1" CONIFER TREE (CALIPER INDICATED)

DWG FILE: SURVEY BASE  
PROJECT NO. 2737P  
AUGUST 1, 2005



**Ruggles & Bohm, P.A.**  
Engineering, Surveying, Land Planning

924 North Main (316) 264-8008  
Wichita, Kansas 67203 (316) 264-4621 fax  
www.rtkansas.com E-mail: info@rtkansas.com