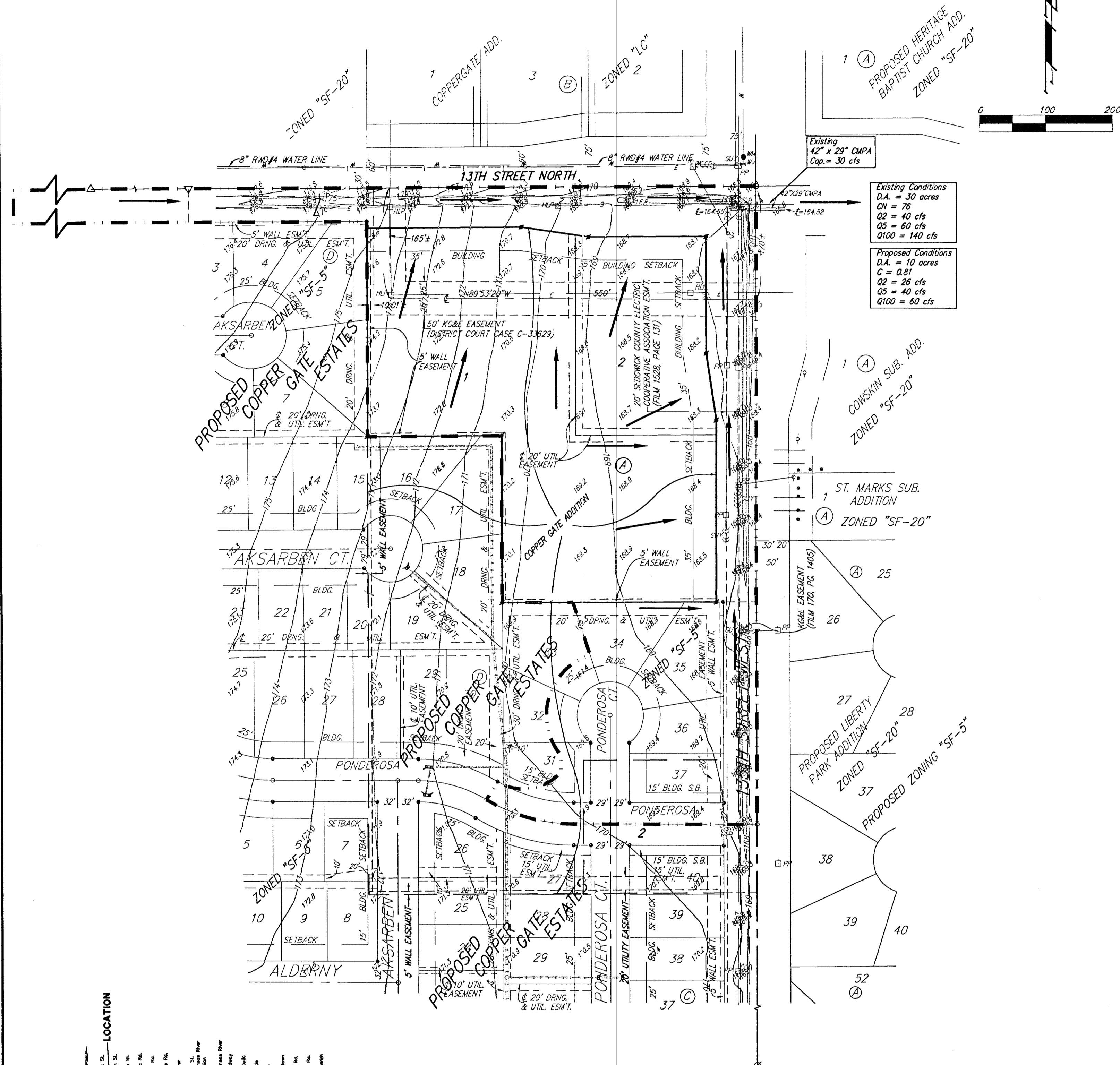


DRAINAGE PLAN

COPPER GATE 2ND ADDITION

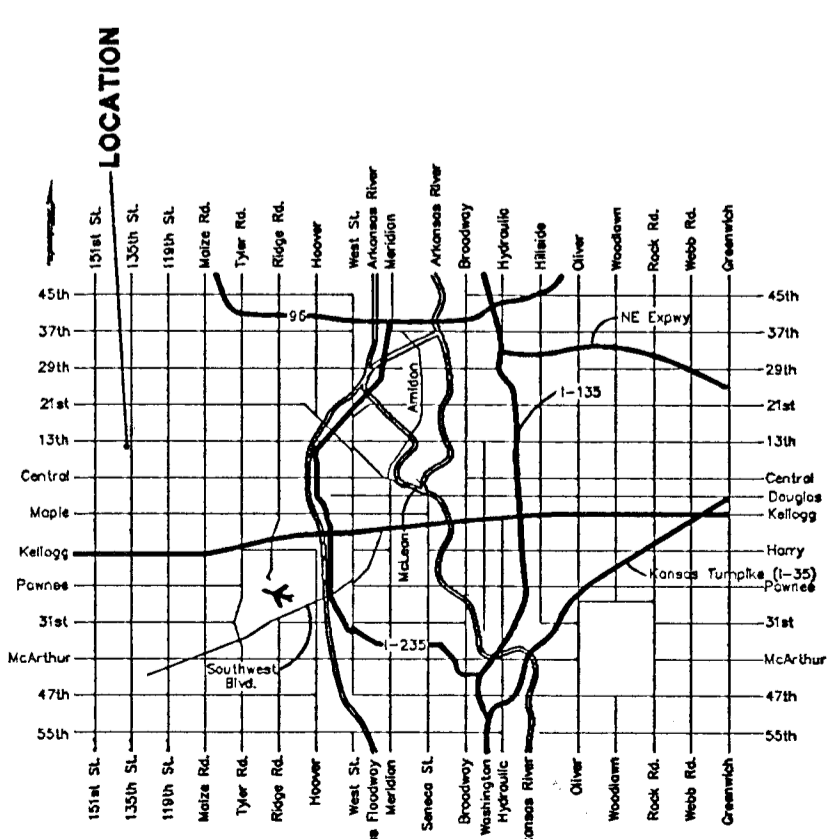
WICHITA, SEDGWICK COUNTY, KANSAS



1 (A) PROPOSED HERITAGE BAPTIST CHURCH ADD. ZONED "SF-20"

Existing Conditions
D.A. = 30 acres
C1 = 28
C2 = 40 cfs
C3 = 60 cfs
C100 = 140 cfs

Proposed Conditions
D.A. = 10 acres
C = 0.81
C2 = 26 cfs
C3 = 40 cfs
C100 = 60 cfs



NOTE:
THIS DRAINAGE PLAN FOLLOWS THE GENERAL CONCEPT THAT HAS BEEN PREVIOUSLY SUBMITTED WITH THE COPPERGATE ESTATES ADDITION. MITIGATION OF THE EXISTING DRAINAGE BASIN WILL REDUCE THE PEAK FLOWRATE AT THE INTERSECTION OF 13TH ST. N. & 13TH ST. N. TO THAT LESS THAN OR EQUAL TO THE EXISTING FLOWRATES.
DETAILED CALCULATIONS WERE SUBMITTED WITH THE FINAL PLAT OF COPPERGATE ESTATES ADDITION.