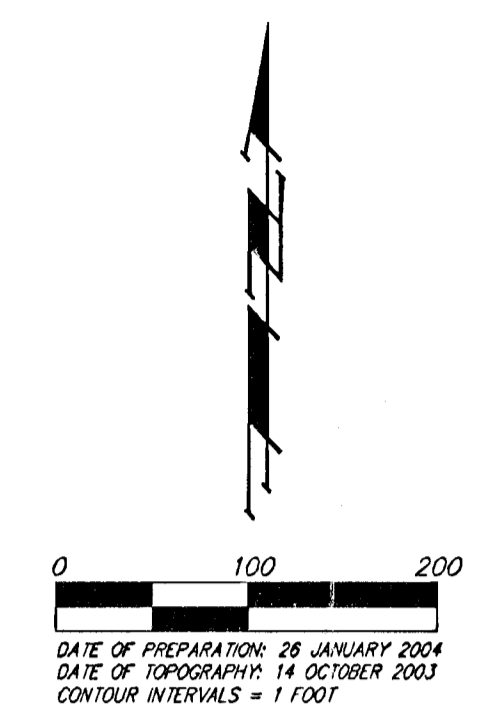
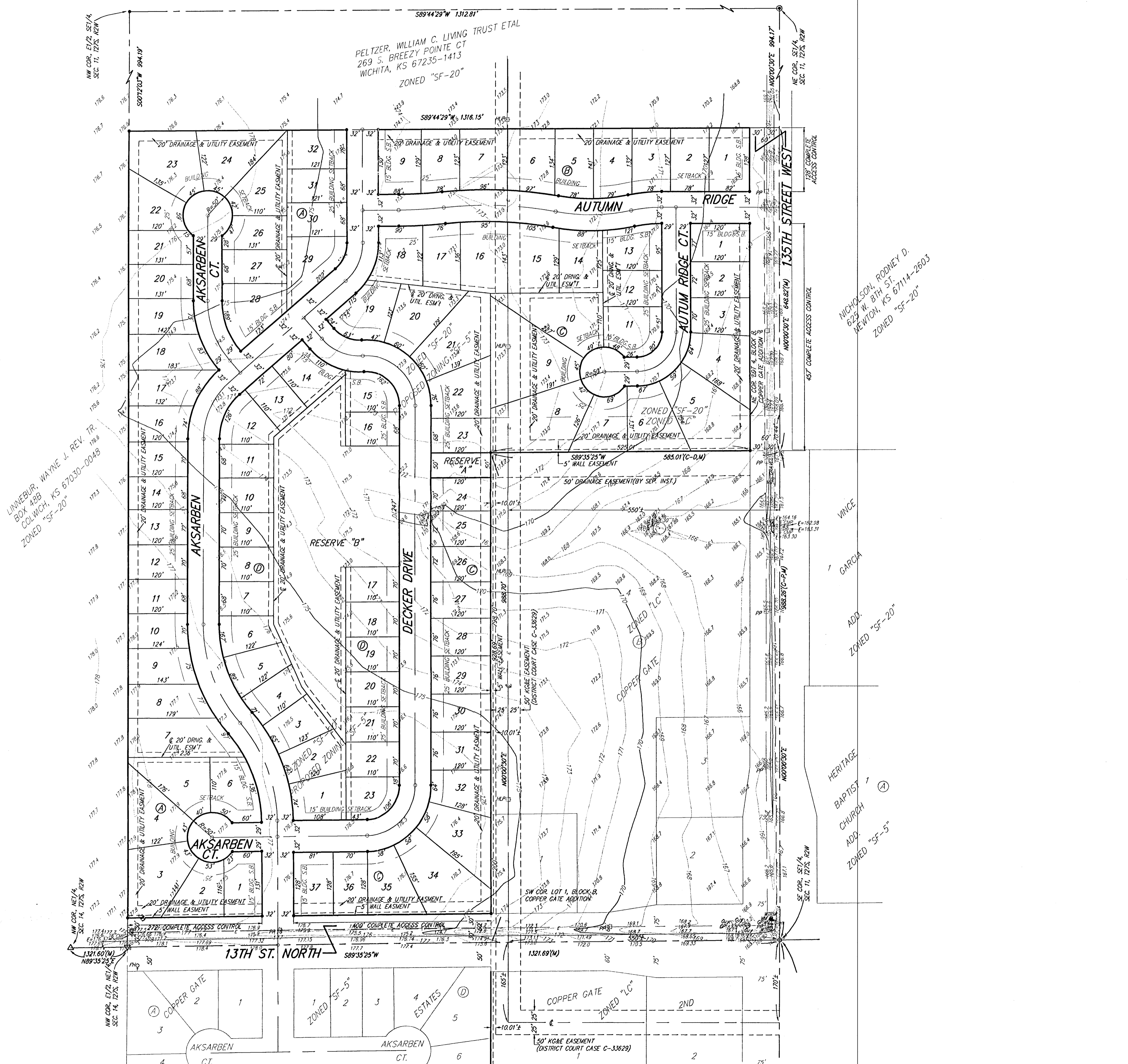


PRELIMINARY PLAT
COPPER GATE NORTH ADDITION
 WICHITA, SEDGWICK COUNTY, KANSAS



DATE OF PREPARATION: 28 JANUARY 2004
 DATE OF TOPOGRAPHY: 14 OCTOBER 2003
 CONTOUR INTERVALS: 1 FOOT

CONTRACT PURCHASER:
 Kelsey Investments, Inc.
 716 W. 119th St. W.
 Suite 112
 Wichita, Kansas 67235-1938
 316-722-1077

LEGAL DESCRIPTION:
 The north 70.00 feet of Lot 4, Block B, Copper Gate Addition, Sedgwick County, Kansas, TOGETHER with the south 50 acres of the E 1/2 of the SE 1/4 of Sec. 11, Twp. 27-S, R-2-W of the 6th P.M., Sedgwick County, Kansas, except that part platted as said Copper Gate Addition, all being subject to road rights-of-way of record.

BENCHMARK:
 City of Wichita Disc. SE Corner of 135th St. W. & 13th St. N.
 Elev. = 1,355.23 N.G.V.D.29
 167.83 City Datum

Benchmark #1 West. Small Railroad Spike in High Line Pole (No Face) in 2nd pole West of 135th St. W. on the South side of 13th St. N.
 Elev. = 1,359.54 N.G.V.D.29
 172.14 City Datum

Benchmark #2 West. Small Railroad Spike in High Line Pole (No Face) 4th pole West of 135th St. W. on the South side of 13th St. N.
 Elev. = 1,366.68 N.G.V.D.29
 179.28 City Datum

Reserve "A" shall be reserved for open space, landscaping, drainage purposes, and utilities as confined to easements.

Reserve "B" shall be reserved for open space, landscaping, berms, lakes, drainage purposes, and utilities as confined to easements.

- = #1 REBAR W/ "BAUGHMAN" CAP (SET)
 - = #1 REBAR W/ "BAUGHMAN" CAP (FOUND)
 - = 1/2" IRON (FOUND)
 - = 3/4" IRON (FOUND)
 - = 1" IRON (FOUND)
 - △ = STONE W/ #5 REBAR ON E. SIDE (FOUND)
 - ▽ = STONE (FOUND)
 - = #5 REBAR (FOUND)
 - ⊙ = 3" COUNTY DISC IN CONC. (FOUND)
- (M) = MEASURED
 (D) = DESCRIBED
 (P) = PLATTED
 (C-D) = CALCULATED PER DESCRIBED INFO.
- FM ○ = Fire Hydrant
 - OP ○ = Guy Pole
 - GA-F = Guy Anchor
 - HL-P = High Line Pole
 - MB = Man Box
 - W/M-D = W/4" #4 Marker
 - PP □ = Power Pole
 - Sign □ = Sign
 - T = Tree
 - WV ● = Water Meter
 - WV+ = Water Valve

