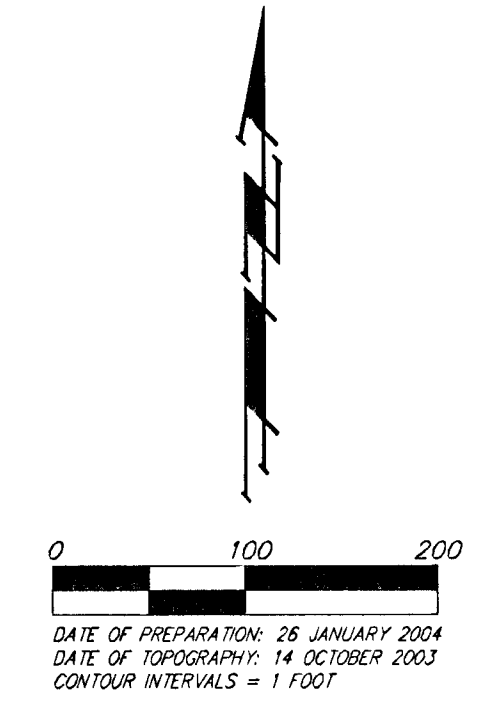


DRAINAGE CONCEPT COPPER GATE NORTH ADDITION WICHITA, SEDGWICK COUNTY, KANSAS



CONTRACT PURCHASER:
Kelsey Investments, Inc.
716 N. 119th St. W.
Suite 112
Wichita, Kansas 67235-1938
316-722-1077

LEGAL DESCRIPTION:
All of Lots 1, 2, 3, and 4, Block B, Copper Gate Addition, Sedgwick County, Kansas, TOGETHER with the south 50 acres of the E 1/2 of the SE 1/4 of Sec. 11, Twp. 27-S, R-2-W of the 6th P.M., Sedgwick County, Kansas, except that part platted as said Copper Gate Addition, all being subject to road rights-of-way of record.

BENCHMARK:
City of Wichita Disc. SE Corner of 135th St. W. & 13th St. N.
Elev. = 1355.23 N.G.V.D.29
167.83 City Datum

Benchmark #1 West. Small Railroad Spike in High Line Pole (No Face) in 2nd pole West of 135th St. W. on the South side of 13th St. N.
Elev. = 1359.54 N.G.V.D.29
172.14 City Datum

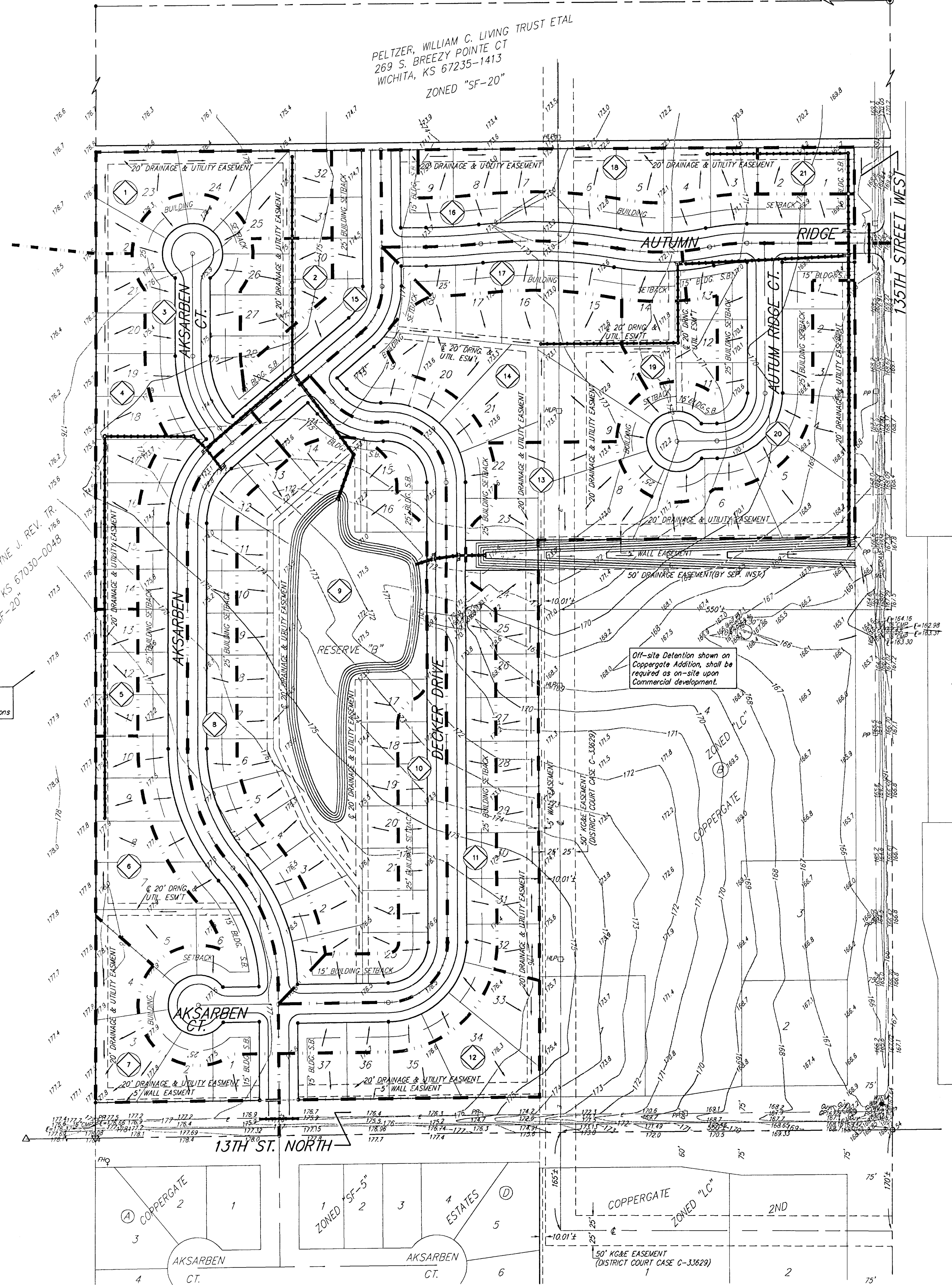
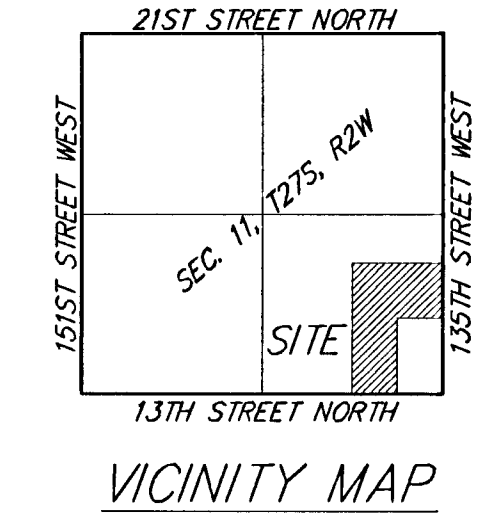
Benchmark #2 West. Small Railroad Spike in High Line Pole (No Face) 4th pole West of 135th St. W. on the South side of 13th St. N.
Elev. = 1366.68 N.G.V.D.29
179.28 City Datum

Reserve "A" shall be reserved for open space, landscaping, drainage purposes, and utilities as confined to easements.

Reserve "B" shall be reserved for open space, landscaping, berms, lakes, drainage purposes, and utilities as confined to easements.

- = #4 REBAR W/ "BAUGHMAN" CAP (SET)
 - = #4 REBAR W/ "BAUGHMAN" CAP (FOUND)
 - = 1/2" IRON (FOUND)
 - = 3/4" IRON (FOUND)
 - = 1" IRON (FOUND)
 - △ = STONE W/ #5 REBAR ON E. SIDE (FOUND)
 - ▽ = STONE (FOUND)
 - = #5 REBAR (FOUND)
 - ⊙ = 3" COUNTY DISC IN CONC. (FOUND)
- (M) = MEASURED
(D) = DESCRIBED
(P) = PLATTED
(C-D) = CALCULATED PER DESCRIBED INFO.
- FM Co = Fire Hydrant
 - OP Co = Guy Pole
 - GA Co = Guy Anchor
 - HP Co = High Line Pole
 - MB = Mail Box
 - WTR M = RHD #4 Marker
 - PP Co = Power Pole
 - Sign = Sign
 - T = Tree
 - WM = Water Meter
 - WV = Water Valve

Basin	Area acres	C2	C5	C100	Q2 cfs	Q5 cfs	Q100 cfs
1	1	0.44	0.48	0.87	1.7	2.1	4.9
2	0.5	0.44	0.48	0.87	0.8	1.0	2.5
3	4.1	0.44	0.48	0.87	8.9	8.8	20.2
4	1.1	0.44	0.48	0.87	1.9	2.3	5.4
5	0.3	0.44	0.48	0.87	0.5	0.6	1.5
6	0.9	0.44	0.48	0.87	1.5	1.9	4.4
7	0.9	0.44	0.48	0.87	1.5	1.9	4.4
8	1.8	0.44	0.48	0.87	3.0	3.8	8.9
9	4.8	0.44	0.48	0.87	8.1	10.1	23.7
10	2	0.44	0.48	0.87	3.4	4.2	9.9
11	2.9	0.44	0.48	0.87	4.9	6.1	14.3
12	1.1	0.44	0.48	0.87	1.9	2.3	5.4
13	3.4	0.44	0.48	0.87	5.7	7.1	18.8
14	1.9	0.44	0.48	0.87	3.2	4.0	9.4
15	0.9	0.44	0.48	0.87	1.5	1.9	4.4
16	1.8	0.44	0.48	0.87	2.7	3.4	7.9
17	0.8	0.44	0.48	0.87	1.3	1.7	4.0
18	1	0.44	0.48	0.87	1.7	2.1	4.9
19	0.5	0.44	0.48	0.87	0.8	1.0	2.5
20	2.2	0.44	0.48	0.87	3.7	4.6	10.9
21	0.3	0.44	0.48	0.87	0.5	0.6	1.5



LINNEBUR, WAYNE J. REV. TR.
BOX 488
COLWAICH, KS 67030-0488
ZONED "SF-20"

PELTZER, WILLIAM C. LIVING TRUST ETAL
269 S. BREEZY POINTE CT
WICHITA, KS 67235-1413
ZONED "SF-20"

NICHOLSON, RODNEY D.
P25 W. 8TH ST.
NEWTON, KS 67114-2603
ZONED "SF-20"

VINCE GARCIA ADD.
ZONED "SF-20"

HERITAGE BAPTIST CHURCH ADD.
ZONED "SF-5"

Off-site Drainage
D.A. = 10 ac
sheet flow conditions

Off-site Detention shown on
Coppergate Addition, shall be
required as on-site upon
Commercial development.