

NE COR. SEC. 11, T25S, R25W

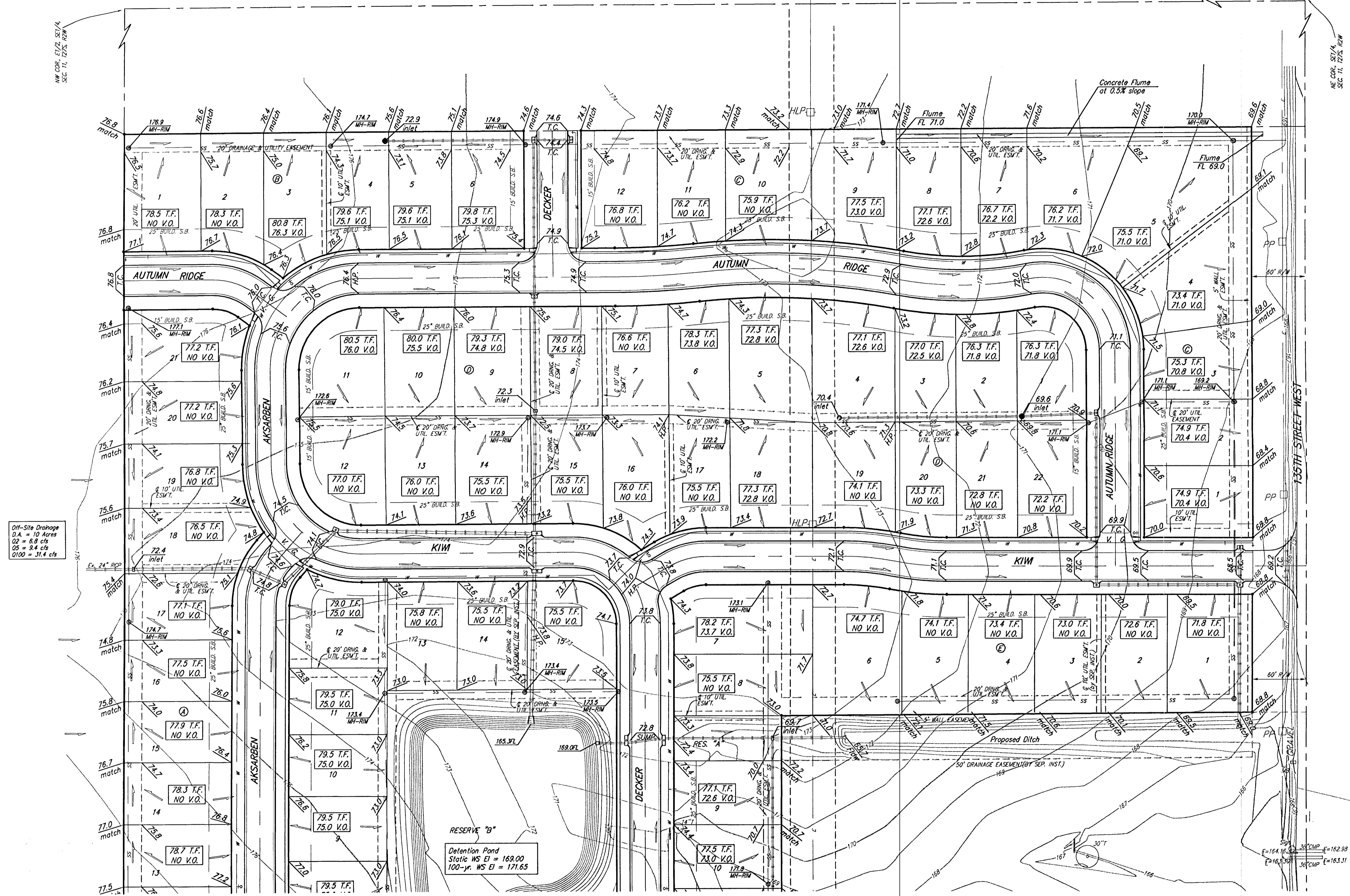
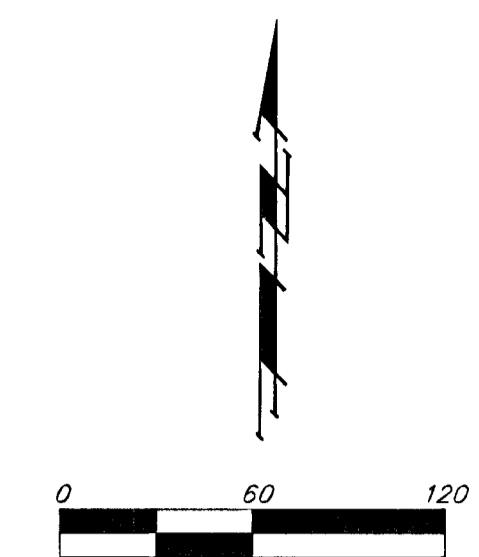
NE COR. SEC. 11, T25S, R25W

BENCHMARKS:

BM #1: C.O.W. disc at SW corner of intersection.
30.00'± S. of CL of 13th St. N. 35.00'±
W. of CL of 135th St. W.
Elev. = 168.25 City Datum

BM #2: Small RR spike in 4th HLP W. of
135th St. W. on south side of 13th St. N.
(N. face of HLP).
Elev. = 179.24 City Datum

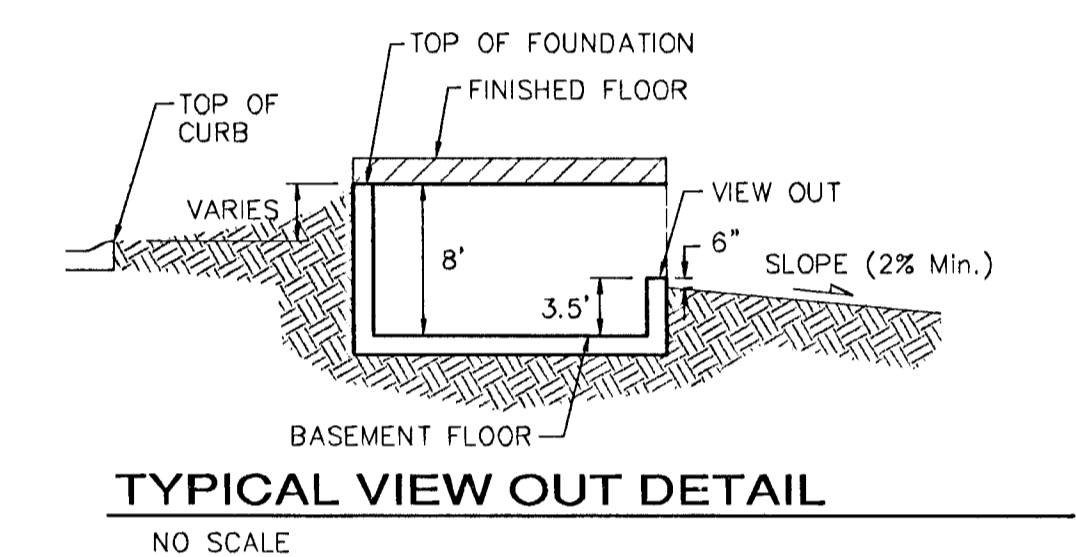
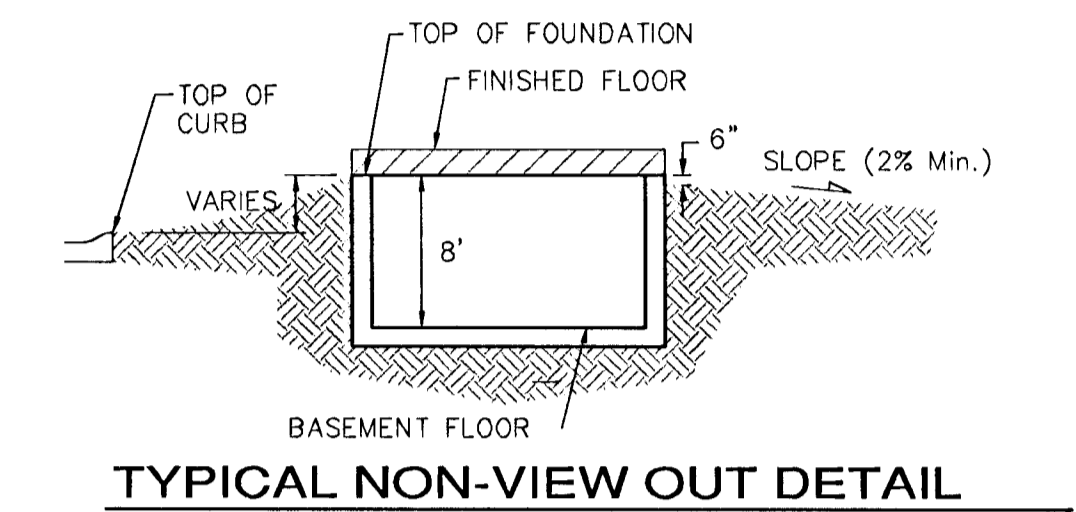
BM #3: RR spike in Power Pole. 1321.65
W. of 135th St. W.
30' N. of 13th St. N.
Elev. = 178.45 City Datum



Off-Site Drainage
D.A. = 10 Acres
Q2 = 8.8 cfs
Q5 = 9.4 cfs
Q100 = 31.4 cfs

RESERVE "B"
Detention Pond
Static WS El = 169.00
100-yr. WS El = 171.65

MINIMUM BUILDING PAD ELEVATIONS FOR LOWEST OPENING TO THE STRUCTURES		
LOT	BLOCK	ELEVATION
		CITY DATUM
2-11, 13-21	F	173.5



NOTES:

Proposed Top of Foundation Elevations Are Shown On Plans. Contractor to Set Finished Floor Elevations.

All Street Elevations Shown on Plans Are for Top of Curb (Full-Height).

This Grading Plan is Designed with View-Outs. Elevations Shown as XX.X V.O. indicate View-Out structure elevation.

Lot dimensions have been omitted on this plan, refer to the recorded plat for this information.

Add 100 to finish grade elevations indicated to achieve city datum elevation. Existing grade elevations are in city datum.

**APPROVED
DRAINAGE PLAN**

Submitted 02/26/06

	Copper Gate North Addition	
	Grading Plan	
Wichita, Sedgewick County, Kansas		
Baughman Company, P.A. 315 Ella St. Wichita, KS 67211 P 316-262-7711 F 316-262-0149		
ENGINEERING SURVEYING PLANNING LANDSCAPE ARCHITECTURE		
PROJECT NUMBER	DESIGN	DRAWN
	BLC	JAK
REVISIONS	DATE	APPROVED
12.21.05		9/06/05
2.15.06	JAK	
SCALE		SHEET
1" = 60'		
2 OF 2		