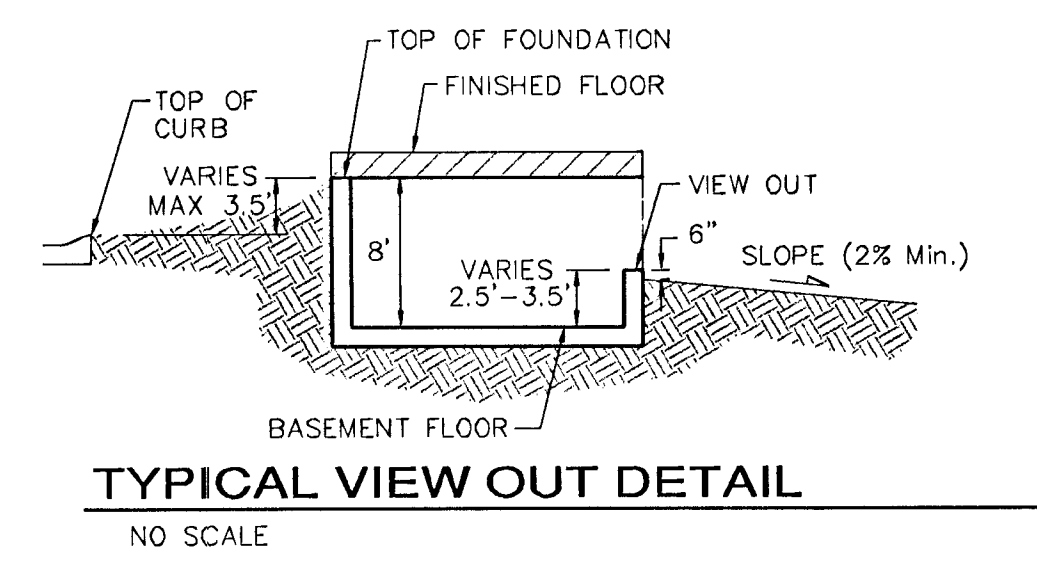
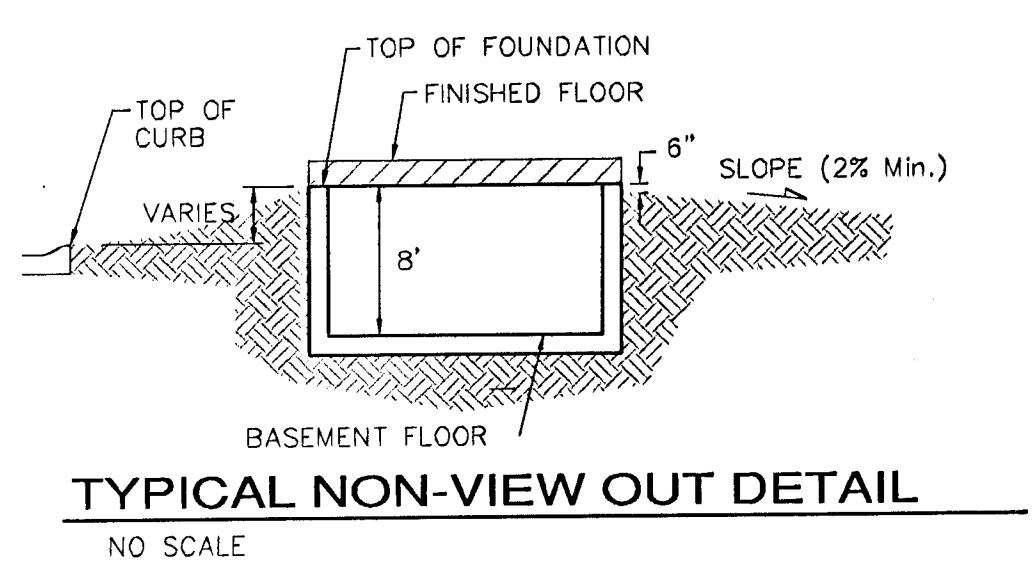
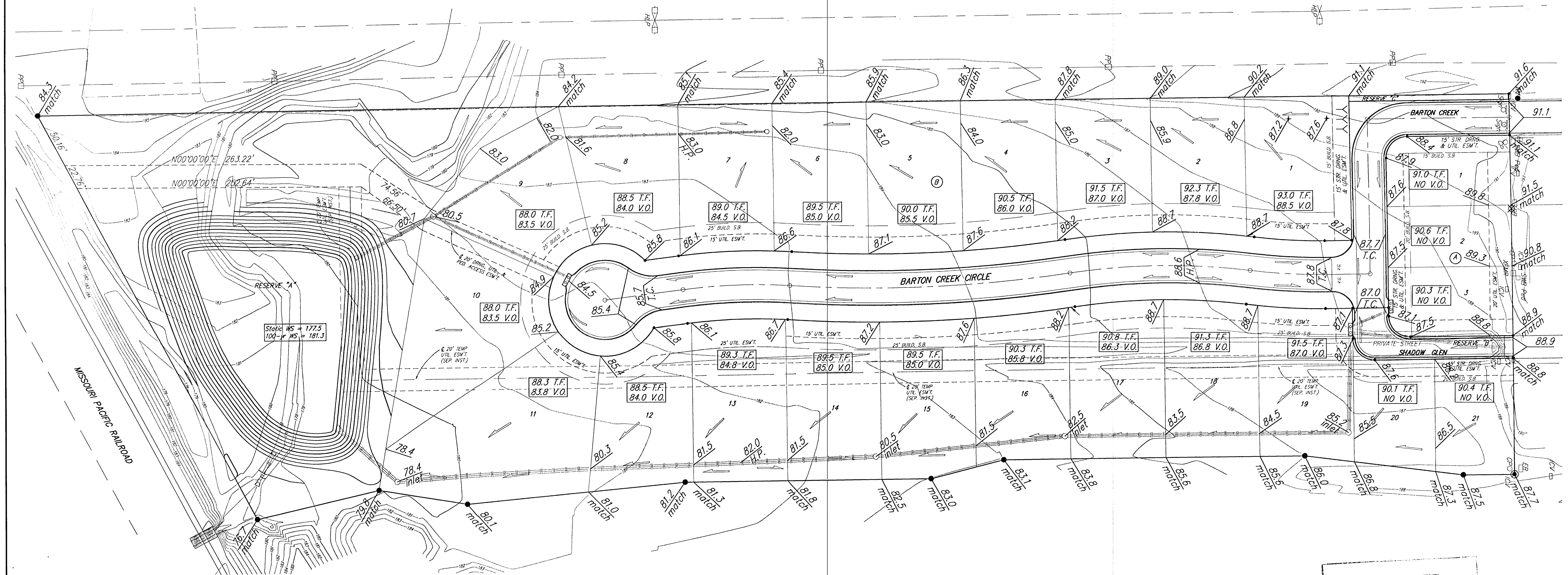
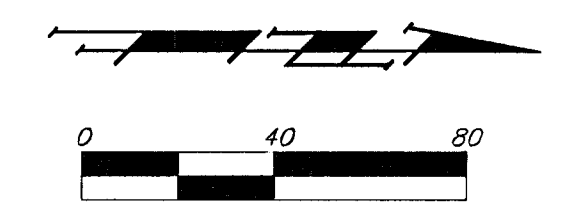


**BENCHMARK:**  
 "□" Top of Curb, ENE Curb return,  
 Barton Creek & Castle Pines St.,  
 Elev. = 196.79 City Datum  
 (1384.19 NGVD29)



**NOTES:**  
 Proposed Top of Foundation Elevations Are Shown On Plans. Contractor to Set Finished Floor Elevations.  
 All Street Elevations Shown on Plans Are for Top of Curb (Full-Height).  
 This Grading Plan is Designed with View-Outs. Elevations Shown at Rear of House (XX.X V.O.)  
 Lot dimensions have been omitted on this plan, refer to the recorded plot for this information.

**APPROVED DRAINAGE PLAN**  
 2/11/06 - S.M.W.M.B.

Revised V.O. Lot 1, Block B 02/08/05 by JAK  
 Revised V.O. Lot 2, Block B 04/13/04 by MWS  
 Revised T.F. Lots 2-3, Block A 9/29/03 by AEG

**WILLOWBEND NORTH ESTATES 2ND ADD.**  
**GRADING PLAN**  
 WICHITA, KANSAS

**BAUGHMAN COMPANY P.A.**  
 ENGINEERING, SURVEYING, & PLANNING  
 318-282-7271 • 318 ELLIS • WICHITA, KANSAS 67211

PROJECT NUMBER: \_\_\_\_\_ SHEET **1** OF **1**

DESIGN: BLG/NBW DRAWN: BLG/SMD APPROVED: \_\_\_\_\_ DATE: 04-21-03 SCALE: NOTED