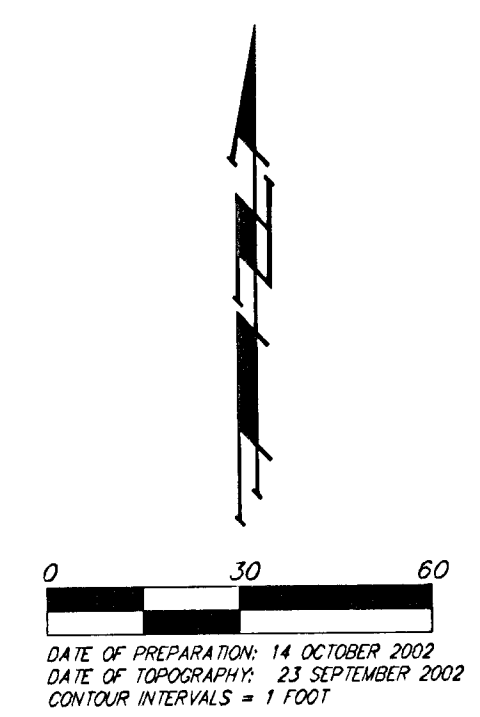
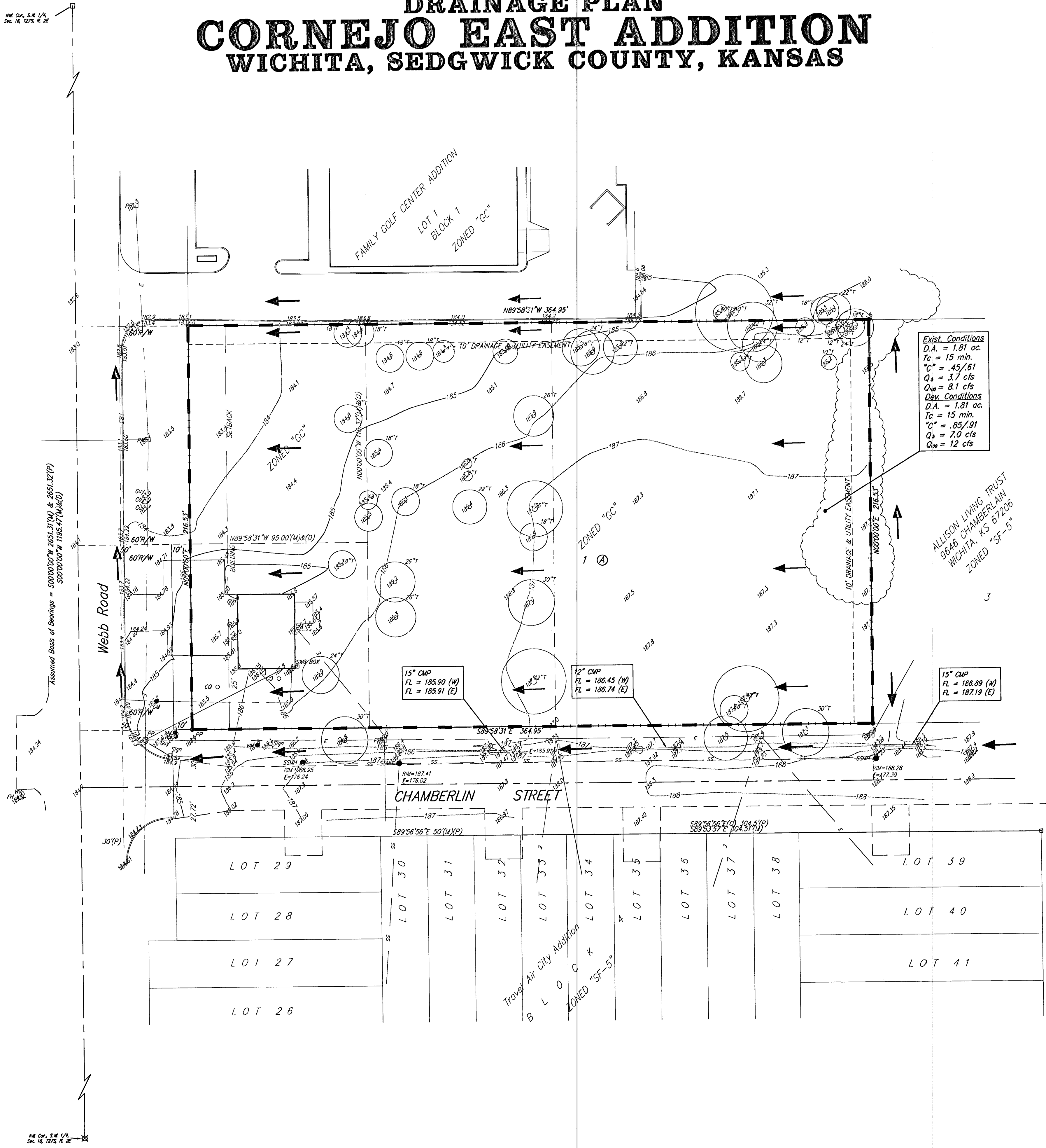


DRAINAGE PLAN CORNEJO EAST ADDITION WICHITA, SEDGWICK COUNTY, KANSAS

USD 259
 ZONED "SF-5"
 201 N. WATER
 WICHITA, KS 67202



- = #4 REBAR W/ "BAUGHMAN" CAP (FOUND)
- = #4 REBAR W/ "BAUGHMAN" CAP (SET)
- ⊗ = CROSS (FOUND)
- = 1.2" IRON (FOUND)
- = "P-K" NAIL & WASHER (FOUND)
- (M) = MEASURED
- (D) = DESCRIBED
- (P) = PLATTED
- (C) = CALCULATED

- CO ○ = Cleanout
- FM ○ = Fire Hydrant
- GU ○ = Guard Post (Ballard)
- GA ○ = Guy Anchor
- PP □ = Power Pole
- SPY ○ = Sign
- SSM ○ = Sanitary Sewer Manhole
- SMB Pnd ○ = Southwestern Bell Pedestal
- T ○ = Tree
- WM ○ = Water Meter
- WV ○ = Water Valve

Benchmark:
 RR Spike, East Side of Telephone
 Pole Parcel A, Family Golf Center Addition,
 37 S and 23rd West of NW Cor.
 Elev. = 181.52 City Datum

