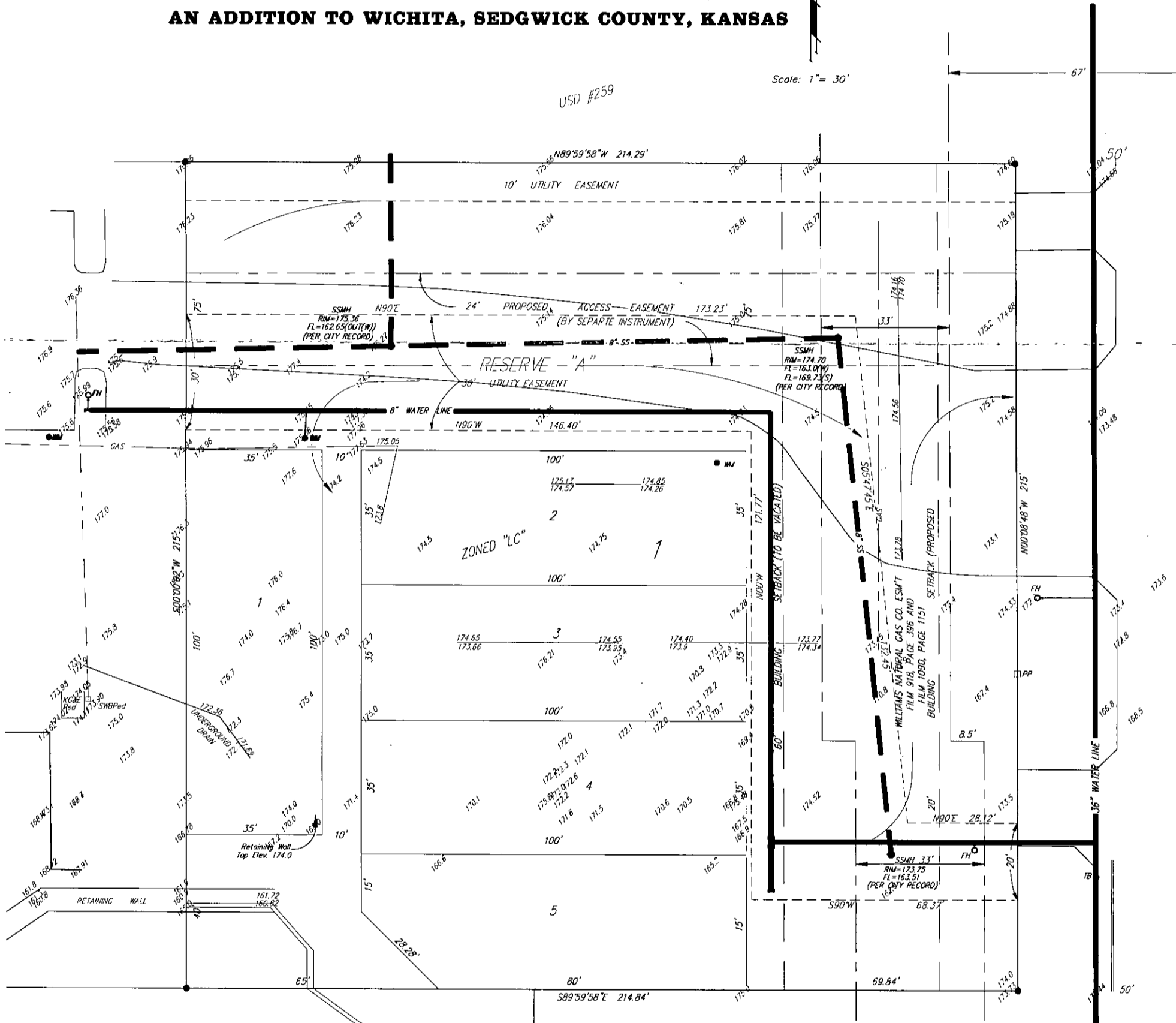


UTILITY PLAN
CORPORATE LAKES 3RD
 AN ADDITION TO WICHITA, SEDGWICK COUNTY, KANSAS



Scale: 1" = 30'

USD #259



CORPORATE LAKES

BENCHMARK

CITY OF WICHITA B.M. DISC
 32 FEET NORTH AND 42 FEET
 WEST OF INTERSECTION OF CENTERLINES
 CENTRAL AND WEBB ROAD
 ELEVATION = 172.88 CITY DATUM

— Existing Water
 - - - Existing San. Sewer

BAUGHMAN COMPANY P. A.
 ENGINEERING, SURVEYING, & PLANNING
 (316)-262-7271 • 319 ELLIS • WICHITA, KANSAS 67211

MAY 2, 1998