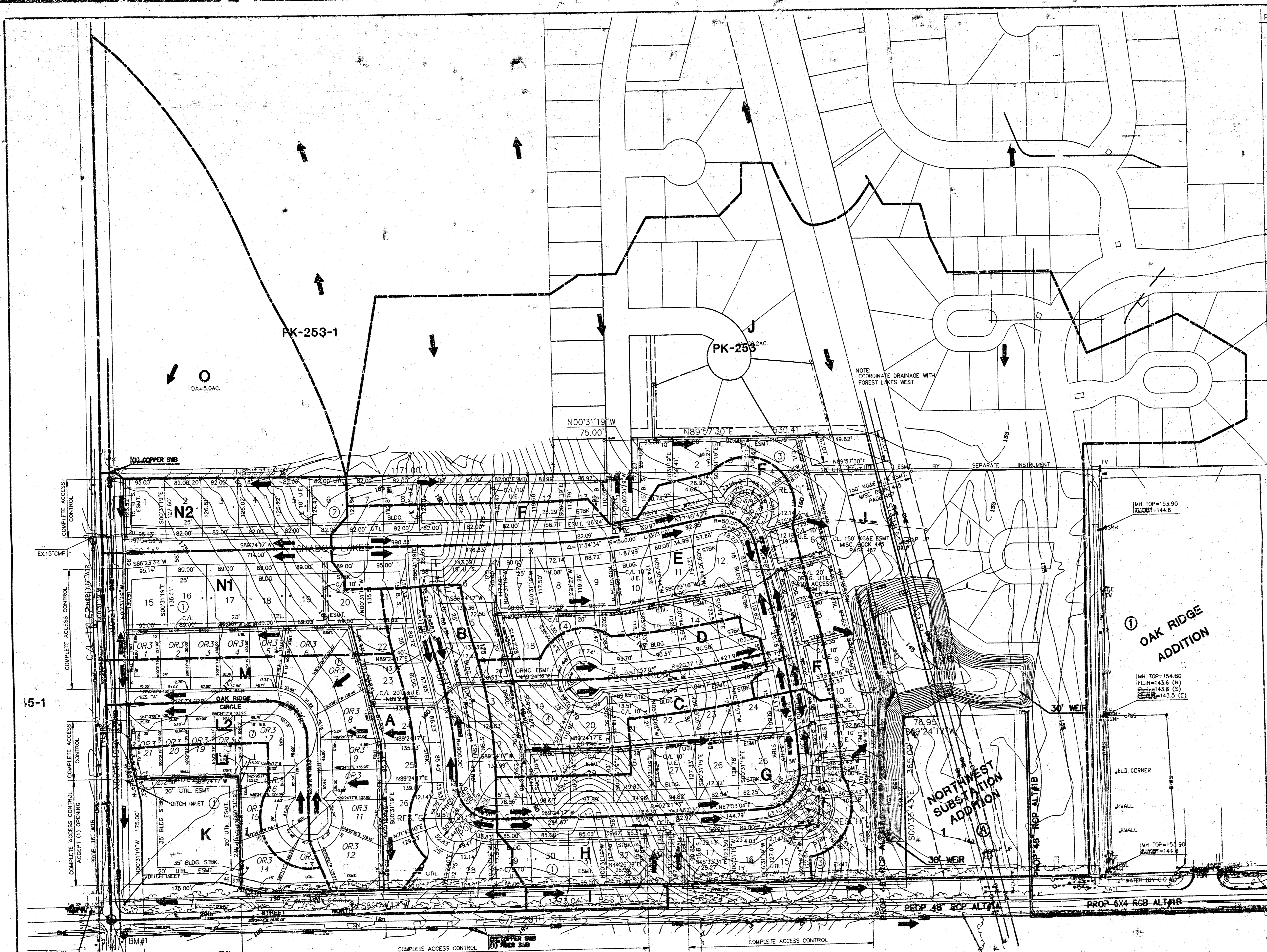
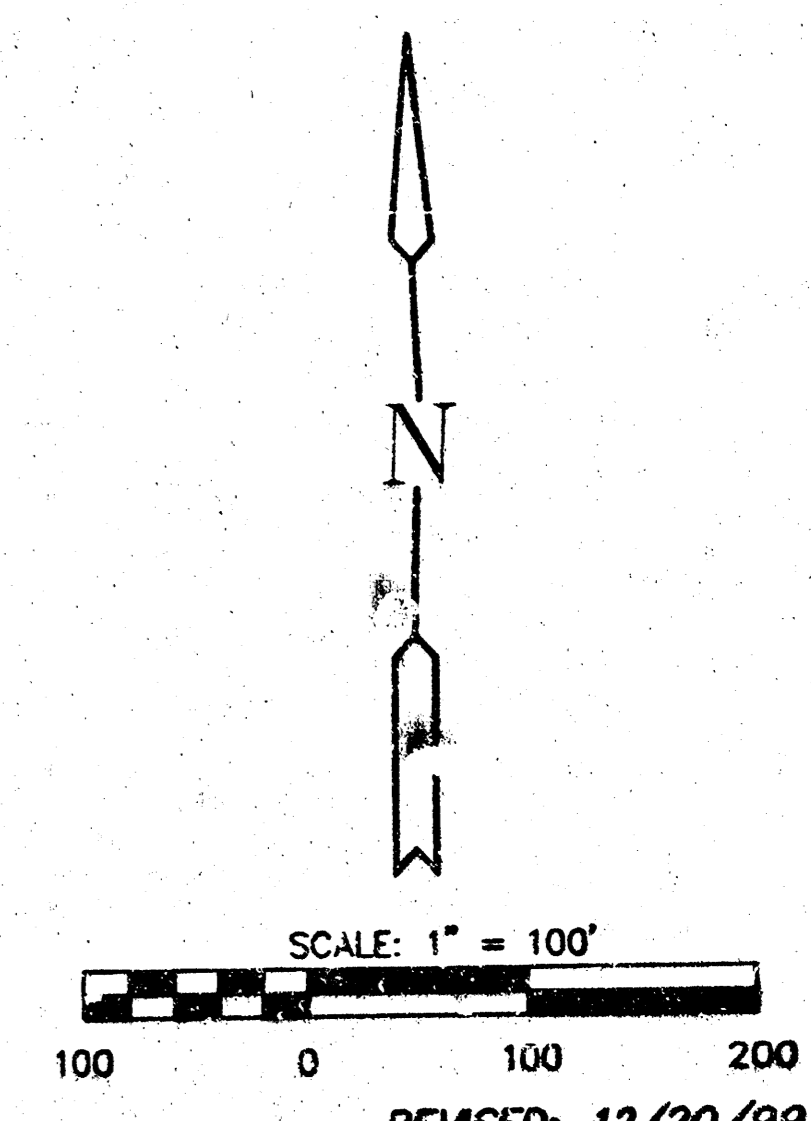


LOCATION MAP

Lot	Block	Min. Pod Elev (City Datum)	Min. Pod Elev (USGS Datum)
4	3	158.4	1345.8
5	3	159.3	1346.7
6	3	158.2	1345.6
7	3	159.3	1346.7
8	3	159.5	1346.9
9	3	158.9	1346.3
10	3	159.0	1346.4
11	3	160.4	1347.8
12	3	162.0	1349.4
13	3	163.9	1351.3
14	3	164.1	1351.5



REGRADE DITCH TO DAYLIGHT
SITE SLOPE = 3:1
BOTTOM = 2'
SLOPE = 0.2%
DEPTH = 1.5'

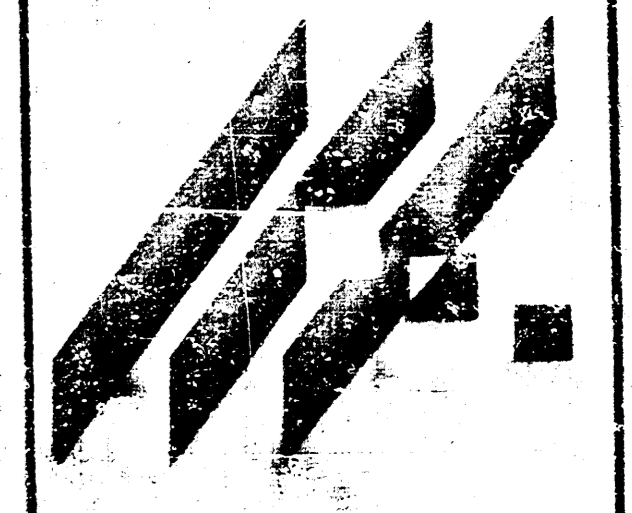
GOV. LOT 4 BENCHMARKS
BM#1 C.O.W. BENCHMARK
SE COR. INTERSECTION. 32.3' S. AND 30' E.
OF C/L BOTH. 55.5' E OF P.P. 9.2' SE OF
P.P. 43.2' SE OF IRON AT SECTION CORNER.
ELEV. = 178.04

DE+62

NOTE:
ALT.-1 =
SOUTH 1/2 OF (FOREST LAKES WEST) IS INCLUDED
IN THE DRAINAGE AREA AND NORTH 1/2 OF (FOREST
LAKES WEST) IS EXCLUDED IN THE DRAINAGE AREA.

GOV. LOT 3
REGRADE DITCH OR EXTEND
38" RCP TO EXISTING DITCH
(NORTH OF REFLECTION RIDGE)

REVISED: 12/20/99
REVISED: 4/18/97
**OAK RIDGE 2ND/
3RD. ADDITION**
PROJECT NAME
**DRAINAGE &
UTILITY PLAN**
DESIGN TITLE
GJA BDM / BDL
DESIGN DRAWN BY.
GJA MAR, 1997
CHECKED BY/DATE
6187CPT 1 / 1
JOB NO. SHEET/OF



MID-KANSAS ENGINEERING
CONSULTANTS, INC.
411 N WEBB ROAD
WICHITA, KS 67206
316-854-9690