

NW COR. NW 1/4
SEC. 1, T25, R1E

29TH ST NORTH

BASIN	AREA (SQ)	C-5 YR (CFS)	C-100 YR (CFS)	15 (CFS)	15 (CFS)	15 (CFS)	15 (CFS)
A	2.68	0.63	0.69	15	4.56	7.37	6.24
B	2.51	0.56	0.76	15	4.56	7.37	6.41
C	1.6	0.5	0.64	15	4.56	7.37	3.44
D	0.97	0.5	0.64	15	4.56	7.37	2.21
E	3.39	0.5	0.64	15	4.56	7.37	11.31
F	2.67	0.5	0.64	15	4.56	7.37	10.57
G	0.35	0.5	0.64	15	4.56	7.37	0.80
H	0.56	0.5	0.64	15	4.56	7.37	1.28
I	0.47	0.5	0.64	15	4.56	7.37	1.01
J	0.74	0.5	0.64	15	4.56	7.37	1.50
K	3.07	0.5	0.64	15	4.56	7.37	1.80
L	0.98	0.5	0.64	15	4.56	7.37	1.44
M	0.98	0.5	0.64	15	4.56	7.37	2.44
N	1.24	0.5	0.64	15	4.56	7.37	2.23
O	1.54	0.5	0.64	15	4.56	7.37	2.83
P	3.43	0.53	0.69	15	4.56	7.37	3.51
Q	1.77	0.58	0.78	15	4.56	7.37	8.29
R	4.00	0.53	0.69	15	4.56	7.37	5.09
S	1.92	0.54	0.71	15	4.56	7.37	9.12
T	1.13	0.58	0.78	15	4.56	7.37	10.65
U				15	4.56	7.37	2.99
V				15	4.56	7.37	8.50

INLET #	INLET SIZE (IN)
100	5
110	5
120	5
130	5
140	5
150	5
160	5
170	5
180	5
190	5
200	5
210	5
220	5
300	10
310	10

BEDFORD PLACE ADD

BEACON HILL 2ND ADD

BEACON HILL ADDITION

MANOR

27TH ST

GREENBRIAR

26TH ST

OXFORD

PEMBROKE

25TH ST

SW COR. NW 1/4
SEC. 1, T25, R1E

PRAIRIE

HILLS

BLECKLEY

PRAIRIE 2ND

BATTIN

HILLS ADD

DRAINAGE PLAN 8-30-93

PEMBROOK ADDITION

OWNER • CRITCHFIELD REAL ESTATE LIMITED PARTNERSHIP 1985
 % SOCORA VILLAGE COMPANY CONTRACT PURCHASER
 % LARRY A. CHAMBERS, 104 S. BROADWAY, SUITE 200
 WICHITA, KANSAS 67202-4165

ENGINEER • P.E.C., PA., 303 S. TOPEKA, WICHITA, KS. 67202

LEGEND

- Drainage Basin Boundary
- Drainage Sub-Basin Boundary
- Flow Minor Storm
- Flow Major Storm
- Prop. SMS Manhole
- Prop. SMS Inlet
- Prop. SMS End Section
- Future Street Elev.
- Elev. SMS
- Basin Designation
- SMS Node No.

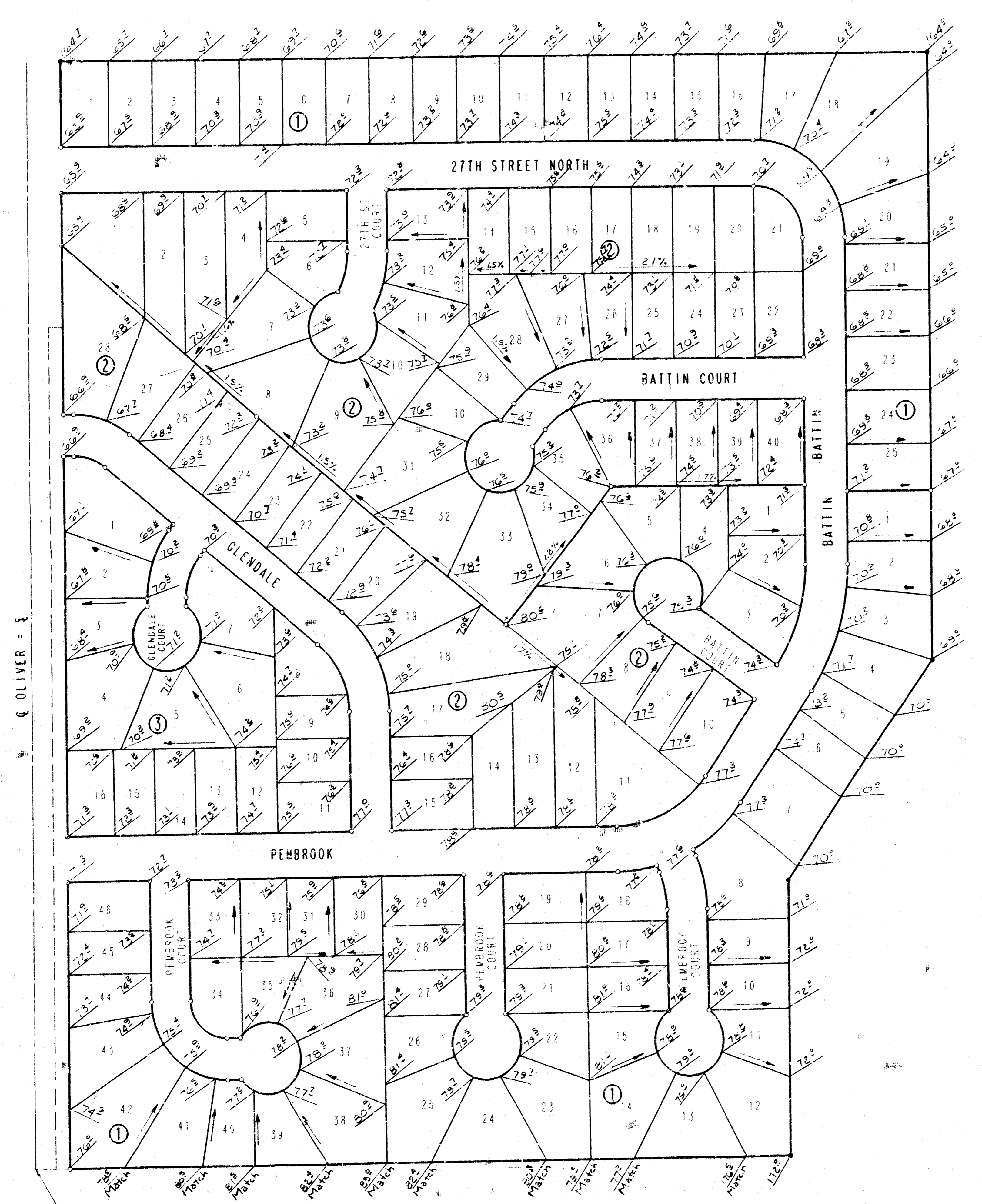
NORTH
 SCALE 1"=100'
 CONTOUR INTERVAL = 2'

- NOTES:
- BENCHMARK: CITY OF WICHITA DISC. 89', NORTH AND 33' EAST OF THE CORNER OF 25TH ST AND NORTH AND OLIVER. ELEV. 159.68 CITY DATUM
 - THIS PLAN IS PART OF BEACON HILL CUP DP-447.
 - DATE OF TOPO: 3-19-1983

Michael W. P.E.C.
 8-28

PEMBROOK

AN ADDITION, TO WICHITA, SEDGWICK COUNTY, KANSAS



S.W. CORNER, N.W. 1/4
SEC. 1, T22S, R1E
OF THE 6TH P.M.

SCALE: 1"=100'
 ○ = IRON SET
 * = IRON FOUND
 CALC. MEAS. = CALCULATED FROM MEASUREMENT
 MEAS. = MEASURED
 S.S. = SANITARY SEWER
 B.S.L. = BUILDING SETBACK LINE

B.M. DISC 29' NORTH AND 32' EAST OF
CENTERLINE OLIVER AND 29TH STREET
NORTH.
ELEV. -159.68 CITY DATUM
 B.M. RAILROAD SPIKE IN S.W. FACE OF
POWER POLE 26.5' NORTH OF 1/16
CORNER, 1/4 MILE EAST OF 29TH
STREET NORTH AND OLIVER.
ELEV. -161.18 CITY DATUM

MINIMUM PAD ELEVATION (LOWEST OPENING), AS
FOLLOWS:
 BLOCK 1
 LOT 1 ELEV. 167.00 CITY DATUM
 LOT 2 ELEV. 168.00 CITY DATUM
 LOTS 3 AND 4 ELEV. 169.00 CITY DATUM
 LOTS 5 THROUGH 7 ELEV. 170.00 CITY DATUM
 LOTS 8 AND 9 ELEV. 171.00 CITY DATUM
 LOTS 10 THROUGH 12 ELEV. 172.00 CITY DATUM

THIS ADDITION IS SUBJECT TO THE REQUIREMENTS
OF THE BEACON P.L.L. C.O.P. DP-147 ON FILE
WITH THE METROPOLITAN AREA PLANNING
DEPARTMENT.

Designates 2% or
greater slope, unless
otherwise noted.

**APPROVED
DRAINAGE PLAN**