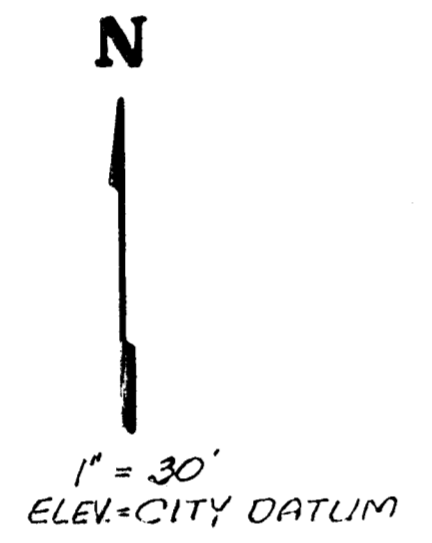
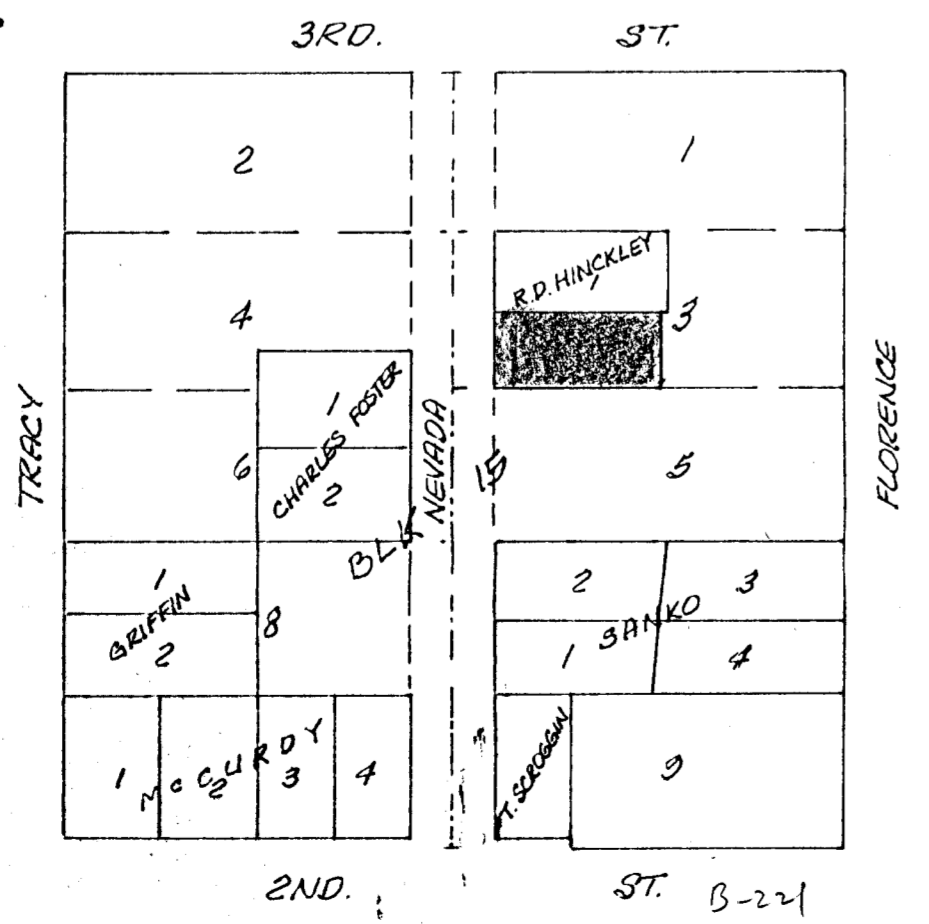
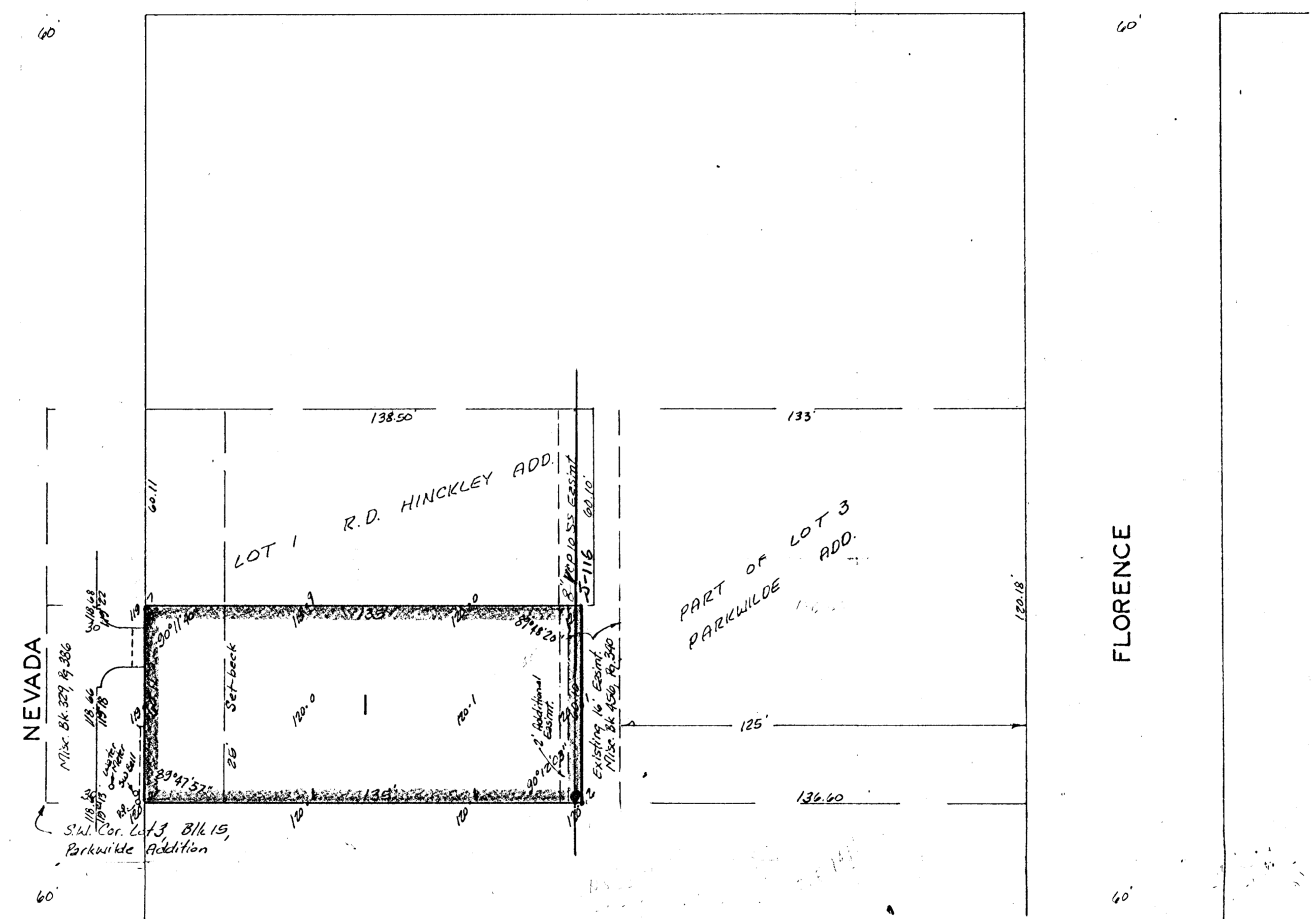


3RD. ST.



BENCH MARK:
City Standard Disc. 34' W. & 18' S.
of E. West St. & 2nd St.
Elev. = 118.87 City Datum



SKETCH PLAT VOGE ADDITION

THE WEST 165 FEET OF THE S¹/₂ OF LOT 3,
BLOCK 15, PARKWILDE ADDITION, TO THE CITY
OF WICHITA, SEDAWICK COUNTY, KANSAS.

SID VOGUE