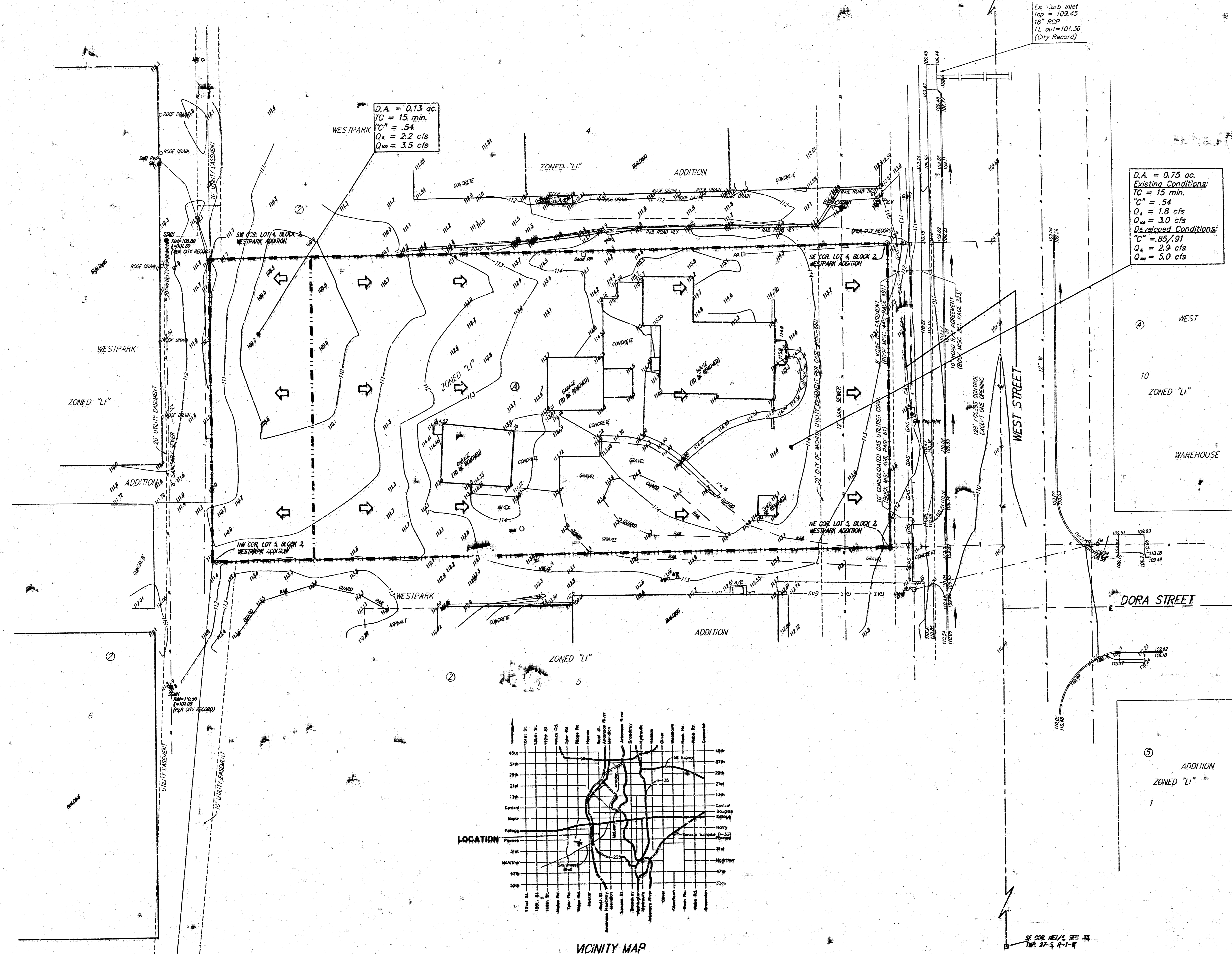


DRAINAGE PLAN WESTPARK 2ND ADDITION WICHITA, SEDGWICK COUNTY, KANSAS

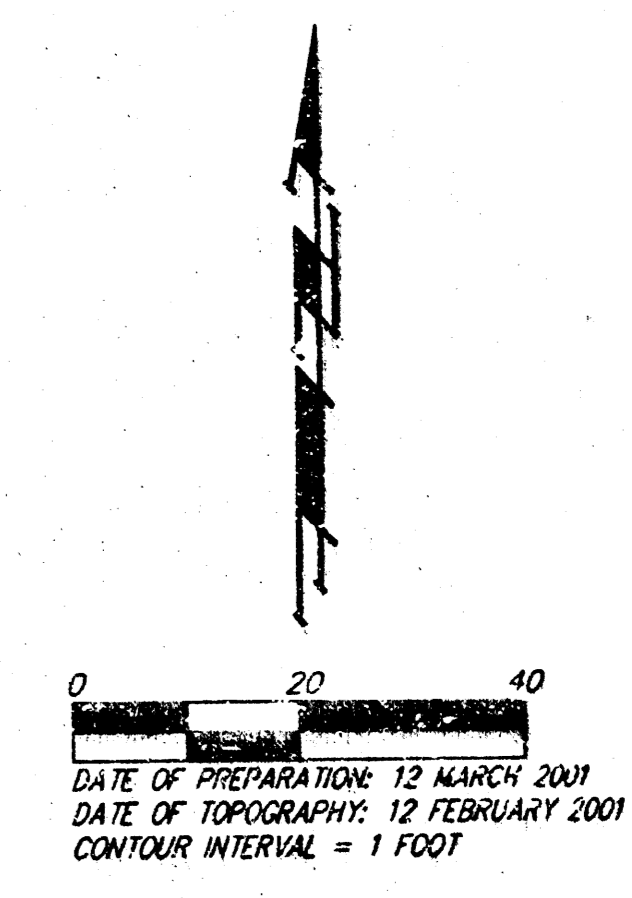
NE COR. NE 1/4, SEC. 35
TWP. 27-S, R-1-W



D.A. = 0.13 ac.
TC = 15 min.
C" = .54
Q_s = 2.2 cfs
Q_w = 3.5 cfs

D.A. = 0.75 ac.
Existing Conditions:
TC = 15 min.
C" = .54
Q_s = 1.8 cfs
Q_w = 3.0 cfs
Developed Conditions:
C" = .85/.91
Q_s = 2.9 cfs
Q_w = 5.0 cfs

Ex. Curb Inlet
Top = 109.45
18" RCP
FL out = 101.36
(City Record)

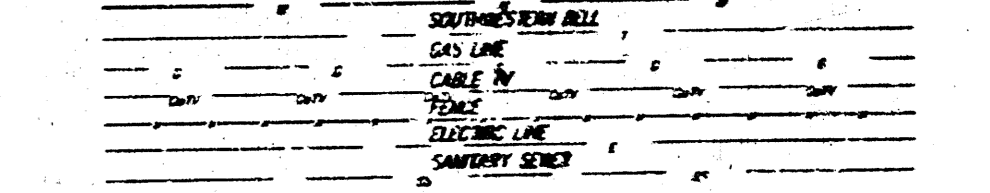


CONTRACT PURCHASER/DEVELOPER:
Dean DeWitt
DeWitt Land Company, Inc.
1854 S. Florence Court
Suite 10
Wichita, Kansas 67209
Phone 316-942-4687

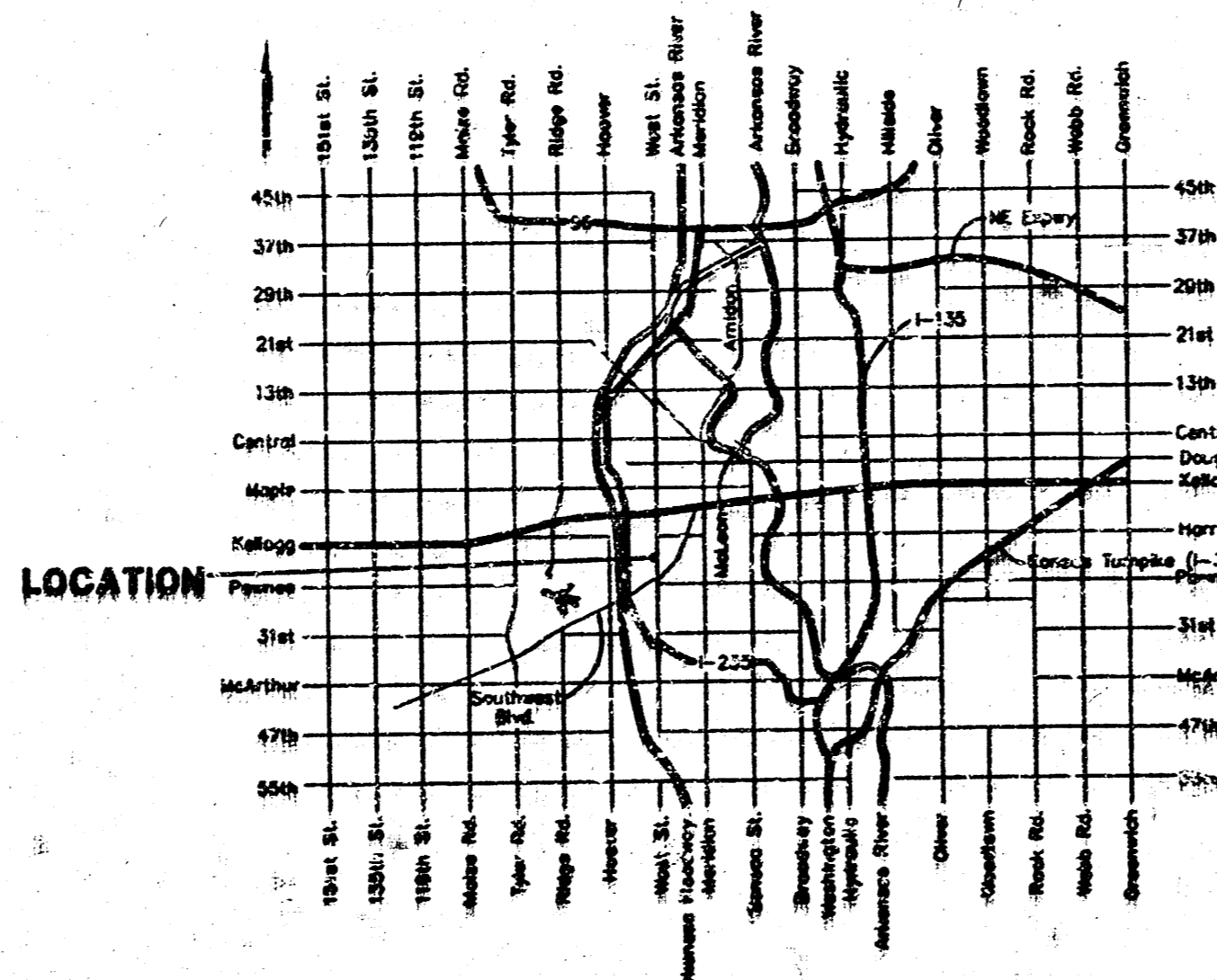
LEGAL DESCRIPTION:
A tract of land beginning 828 feet north of the SE corner of the NE 1/4 of Sec. 35, Twp. 27-S, R-1-W of the 6th P.M., Sedgwick County, Kansas; thence north along the east line of said NE 1/4, 128 feet; thence west parallel with the south line of said NE 1/4, 350 feet; thence south 128 feet to beginning.

BENCHMARK:
City disc northwest corner of West St. and May, 2.2' north of north curb, 14.4' west of walk.
Elev = 108.63 City Datum

- GM = Gas Meter
- GM-A = Gas Anchoer
- GV = Gas Valve
- HL = High Line Pole
- HP = Power Pole
- SSM = Sanitary Sewer Manhole
- M = Manhole
- ICV = Irrigation Control Valve - Valve Box
- CB = Catch Basin
- WM = Water Meter
- WV = Water Valve
- TH = Yard Hydrant (Sprig)



- ⊖ = #4 REBAR W/ "BAUGHMAN" CAP (S-7)
- ⊙ = 3/4" IRON (FOUND)
- = 1/2" IRON (FOUND)
- = 1/4" IRON IN TRIMBLE (FOUND)
- (M) = MEASURED
- (D) = DESCRIBED
- (P) = PLATTED
- (C) = CALCULATED
- (C-D) = CALCULATED PER DESCRIBED INFO.



VICINITY MAP

SE COR. NE 1/4, SEC. 35
TWP. 27-S, R-1-W

REV. 05 JUNE 2001
REV. 25 APRIL 2001
02 APRIL 2001