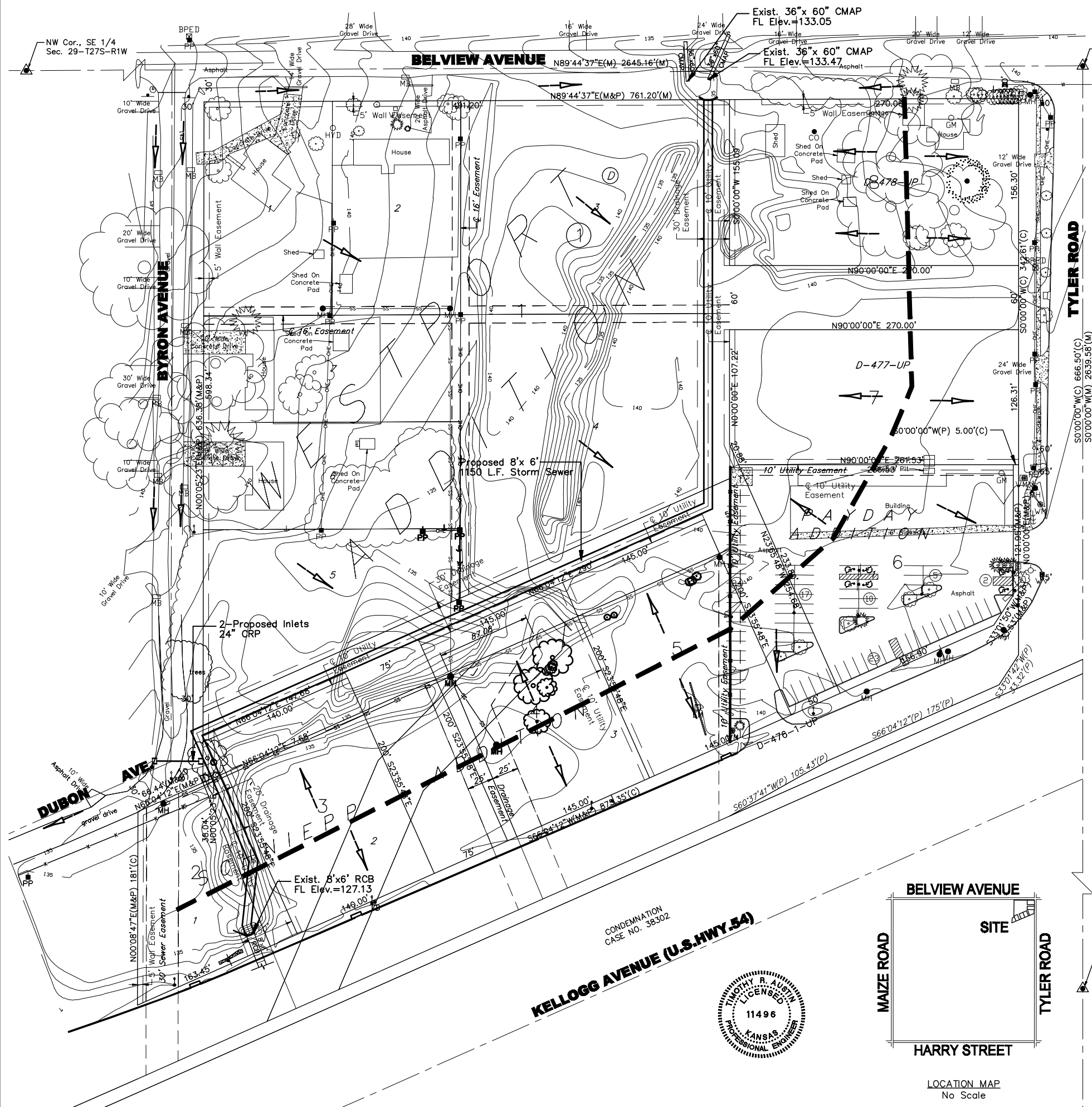
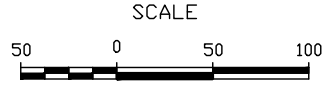


DRAINAGE PLAN FOR HOLLAND ADDITION WICHITA SEDGWICK COUNTY KANSAS



LEGEND

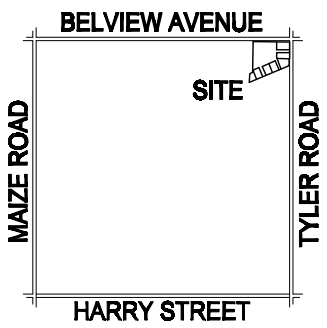
- = Section Corner
- = 3/4" Iron Pipe (found)
- = 5/8" Rebar AMINC CLS #104 (set)
- (C) = Calculated
- (M) = Measured
- = Assumed Drainage Break Line



Area #	Area	Undeveloped C=0.35		Developed C=0.85			
		$\frac{1}{2}$	$\frac{1}{100}$	Q_5	Q_{100}		
1	11.59	4.56	7.37	18.5	29.9	44.9	72.6
TOTAL	11.59			18.5	29.9	44.9	72.6

NOTES:

1. Cross-drainage agreement required for subsequent sub-divisions.
2. See drainage study by Young & Associates dated 3-15-04
3. Site grading and drainage plans to be designed by a licensed professional engineer.
4. The drainage plan will need to be updated and filed with city engineering at the time of building permit(s).
5. Minimum Low Opening Elev.:
 N 200' Lot 1 & Lot 7= 140.0 (City Datum); 1327.4 (MSL)
 Lot 1 Except N 200' & Lot 3= 138.0; 1325.4
 Lot 2 = 136.5; 1323.9
 Lot 4 = 138.5; 1325.9
 Lot 5 = 139.0; 1326.4
 Lot 6 = 139.5; 1326.9
 Lot 8 = 141.0; 1328.4



BENCHMARK
West St. and 47th St. South
C.O.W. Benchmark. NE corner of intersection.
Elev. 1282.09 MSL, 94.69 City Datum



POE & ASSOCIATES, INC.
CONSULTING ENGINEERS
5940 E. Central, Suite 200 • Wichita, KS 67208-4242
Phone 316/685-4114 • FAX 316/685-4444