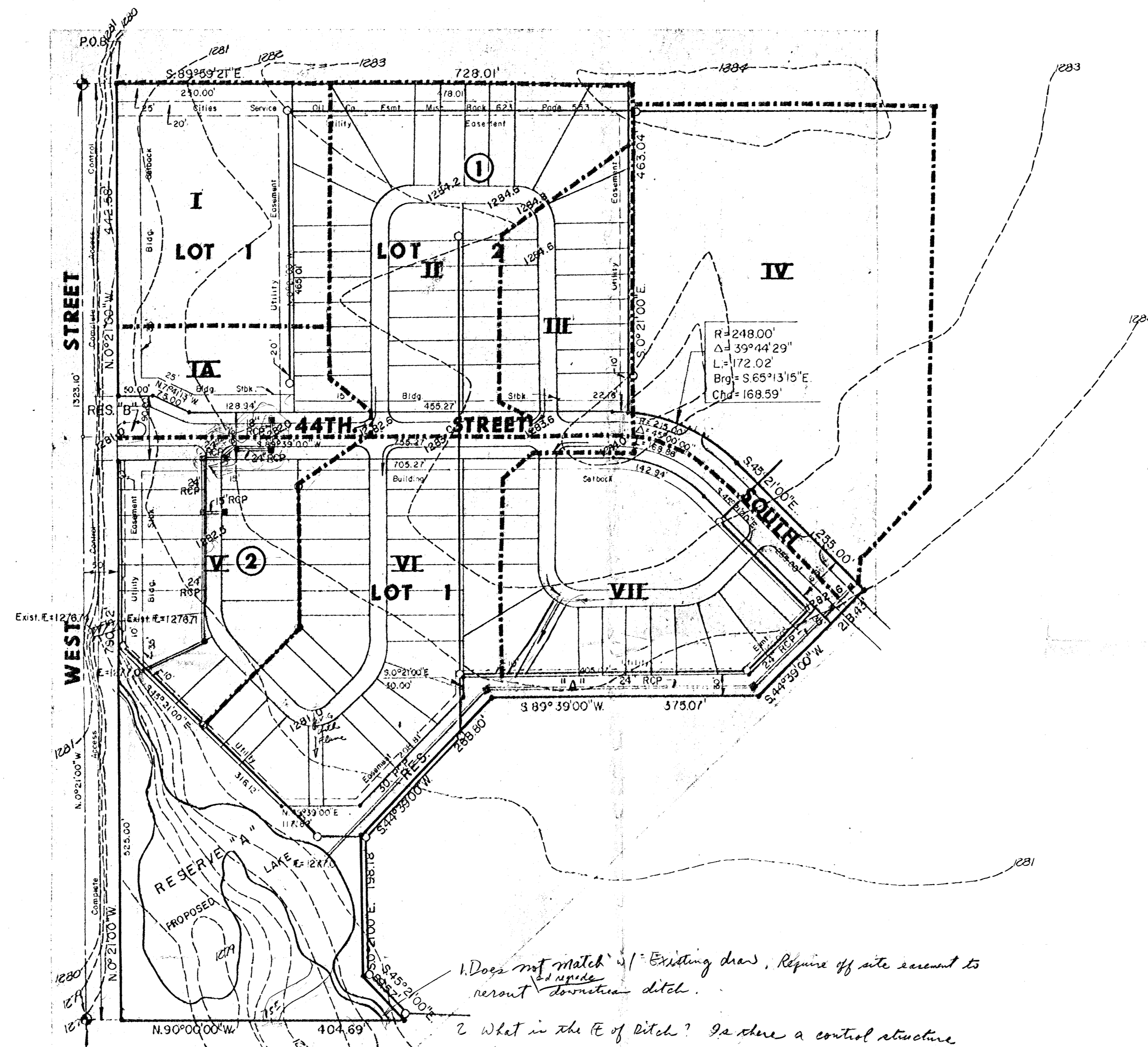


	Area	Area Accum.	Tc	C	$t_2$	$t_{100}$	$Q_2$	$Q_{100}$	Pipe Size and Slope	Inlets
III	1.4		18	0.5	3.78	8.37				
II	3.4		20	0.5	3.63	8.03				
I	4.8		20	0.5	3.63	8.03	8.7	19.3	24" at 0.16%	2
VI	3.7		20	0.5	3.63	8.03	6.7	14.8		
I-A	1.1		15	0.5	4.06	8.98	2.2	4.9		
V	2.2		15	0.5	4.06	8.98	4.5	9.9		
I	2.6		15	0.6	4.06	8.98	6.3	14.0		
IV	5.5		20	0.5	3.63	8.03	10.0		24" at 0.2%	
VII	3.0		15	0.5	4.06	8.98				
	8.5		21	0.5	3.56	7.88	15.1		30" at 0.14%	

Off-site Drainage 480 acres more or less  
Study with Cottonwood Grove - 1980 had projected Q = 386 cfs.  
Water surface profile of 1279.6 - 1278.9



1. Does not match w/ Existing draw, require off site account to rerout domestic ditch.  
2. What is the E of Ditch? Is there a control structure at outlet of Pond?  
Part of Lot 2 drain across lot 1 and part of lot 1 drain to West St Ditch.  
Guarantee all drainage improvements.

	<b>DRAINAGE PLAN FOR COTTONWOOD GROVE</b>	Design: KHB Drawn by: DLM Checked by: KHB Date: April, 1984 Job no:
	MID-KANSAS ENGINEERING CONSULTANTS PA 240 NORTH ROCK ROAD SUITE 130 WICHITA, KANSAS 67206 682-6561	Sheet: 1 of 1