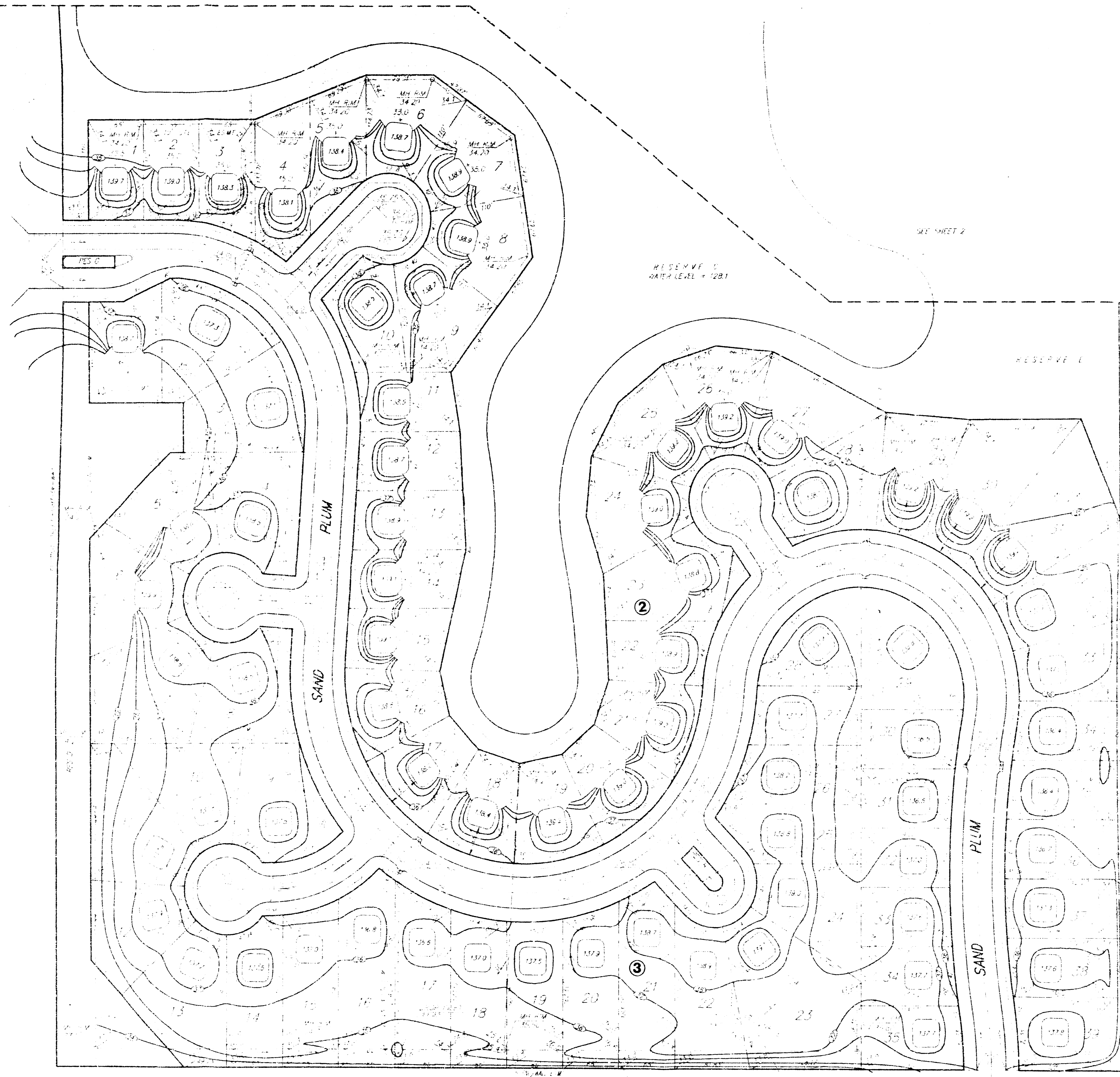


ND  
ST  
21ST



**APPROVED  
DRAINAGE PLAN**

1. This plan shows the proposed grading and drainage for the lots shown hereon. It is based on the data furnished by the applicant and the field notes of the engineer. It is assumed that the ground surface is as shown on the plan. The proposed grading is shown by the solid lines and the drainage is shown by the dashed lines. The elevations are in feet above mean sea level. The drainage is to be by gravity to the street or to the water body shown on the plan. The applicant is responsible for the accuracy of the data and the proposed grading and drainage. The engineer is not responsible for the accuracy of the data or the proposed grading and drainage. The engineer is only responsible for the accuracy of the plan as shown.

LAKE RIDGE 2ND ADDITION LOT GRADING PLAN	
BAUGHMAN COMPANY P.A.	
	1
	2

NORTH SHORE BLVD  
NORTH LAKES ADDITION

FILMED FROM THE BEST AVAILABLE COPY.....

